



**Trinity College Dublin**

Coláiste na Tríonóide, Baile Átha Cliath

The University of Dublin

# Go Global!

**Heather Hodges**

Global Mobility Manager

**Colleen Griffin**

Global Mobility Officer, Outbound

**Abigail McConnell**

Global Mobility Officer, Outbound

**Jaishree Malik**

Student Support Officer



# Agenda

---

- Overview: International Exchange and Erasmus
- Other Types of Mobility Options
- Things to Consider before Applying
- Next Steps:
  - Application Process
  - Timelines
- Student Panel
- Q&A



**Trinity College Dublin**

Coláiste na Tríonóide, Baile Átha Cliath

The University of Dublin

# Overview: International Exchange and Erasmus

# International Exchange v. Erasmus+

## International Exchange

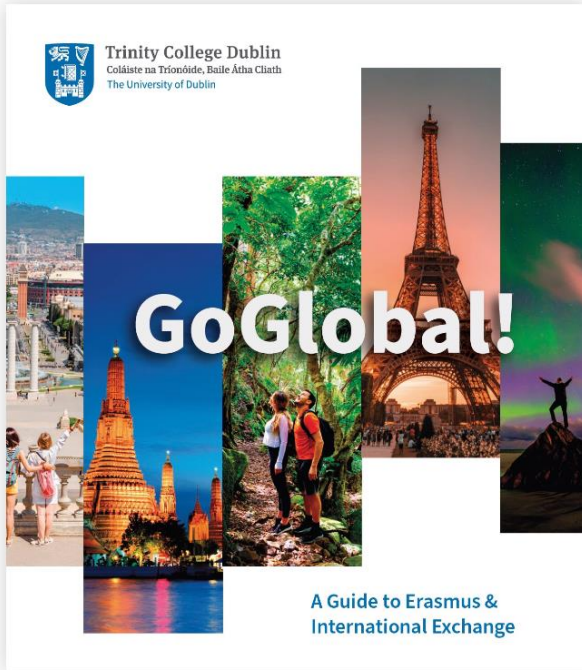
- Study abroad at one of Trinity's partner universities **outside of Europe.**
- Applications for international exchange are managed by Trinity Global and are open to students in many Schools/Departments.
- Some schools have school-wide exchange partners outside of Europe. (ex. Business, Law)
- You can apply for a Global Mobility Bursary to receive funding for your time abroad.

## Erasmus+

- Erasmus+ is the EU's programme to support education, training, youth and sport **within Europe.**
- Applications are managed by Trinity Schools/Departments & students apply to their subject areas' Erasmus partner universities (with 3 exceptions: Coimbra, CHARM, ELAN)
- You are eligible to apply for an Erasmus+ Grant
- Erasmus+ allows for more opportunities for teaching and learning in a native language.

# Go Global Guide: International Exchange and Erasmus+

<https://viewer.ipaper.io/trinity/trinity-go-global-guide>



>|

>

## Go Global Guide

- The Go Global Guide is an excellent resource to explore your global mobility options, resources, timelines for applications, student testimonials and more!
- You can access the Go Global Guide on Trinity Global's Mobility website.



**Trinity College Dublin**

Coláiste na Tríonóide, Baile Átha Cliath

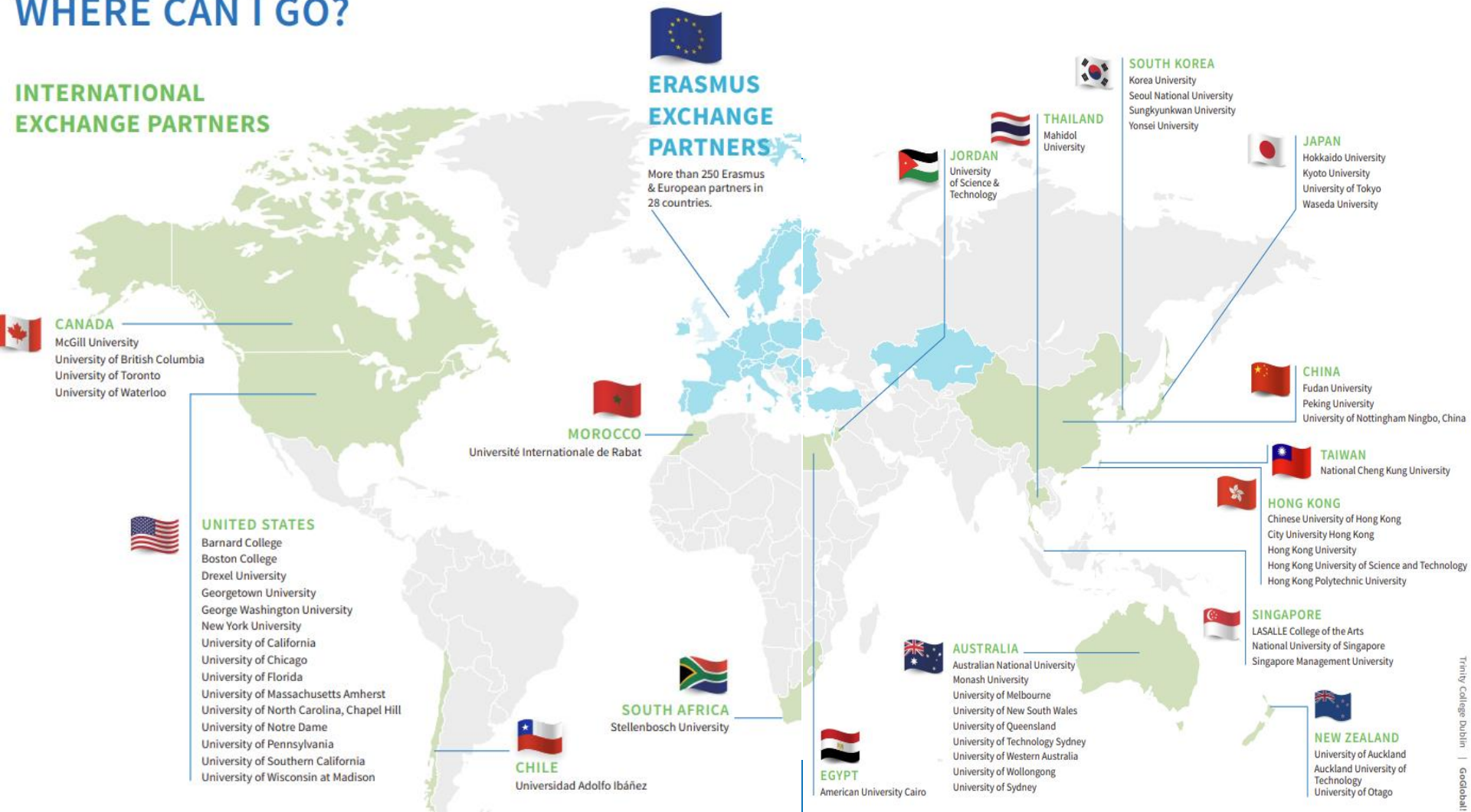
The University of Dublin

# International Exchange



# WHERE CAN I GO?

## INTERNATIONAL EXCHANGE PARTNERS



**CANADA**  
McGill University  
University of British Columbia  
University of Toronto  
University of Waterloo



**UNITED STATES**  
Barnard College  
Boston College  
Drexel University  
Georgetown University  
George Washington University  
New York University  
University of California  
University of Chicago  
University of Florida  
University of Massachusetts Amherst  
University of North Carolina, Chapel Hill  
University of Notre Dame  
University of Pennsylvania  
University of Southern California  
University of Wisconsin at Madison



**CHILE**  
Universidad Adolfo Ibáñez



**ERASMUS EXCHANGE PARTNERS**  
More than 250 Erasmus & European partners in 28 countries.



**MOROCCO**  
Université Internationale de Rabat



**SOUTH AFRICA**  
Stellenbosch University



**EGYPT**  
American University Cairo



**AUSTRALIA**  
Australian National University  
Monash University  
University of Melbourne  
University of New South Wales  
University of Queensland  
University of Technology Sydney  
University of Western Australia  
University of Wollongong  
University of Sydney



**JORDAN**  
University of Science & Technology



**THAILAND**  
Mahidol University



**SOUTH KOREA**  
Korea University  
Seoul National University  
Sungkyunkwan University  
Yonsei University



**JAPAN**  
Hokkaido University  
Kyoto University  
University of Tokyo  
Waseda University



**CHINA**  
Fudan University  
Peking University  
University of Nottingham Ningbo, China



**TAIWAN**  
National Cheng Kung University



**HONG KONG**  
Chinese University of Hong Kong  
City University Hong Kong  
Hong Kong University  
Hong Kong University of Science and Technology  
Hong Kong Polytechnic University



**SINGAPORE**  
LASALLE College of the Arts  
National University of Singapore  
Singapore Management University



**NEW ZEALAND**  
University of Auckland  
Auckland University of Technology  
University of Otago

# International Exchange: Where can I go?

Trinity has over 60 partnerships worldwide. You can list up to six location preferences on your exchange application. You can apply to study at universities in the following countries:

- Australia
- Canada
- China
- Chile
- Egypt
- Hong Kong
- Japan
- Morocco
- New Zealand
- Singapore
- South Africa
- South Korea
- Taiwan
- Thailand
- United States of America

*You can find a list of all the universities in each country on Trinity Global website.*




# International Exchange: Where can I go?


[www.tcd.ie/study/study-abroad/outbound/](http://www.tcd.ie/study/study-abroad/outbound/)

Study Abroad & Exchange


- Inbound >
- Outbound ▾
  - Where Can I Go?
  - How to Apply
  - Summer Programmes
  - Pre-Departure
  - Returning from Abroad
  - Hear from Students
  - Get in Touch
  - FAQ




Erasmus and EU Exchange >



International Exchange >



School Level Exchange >



CASA Exchange >



# International Exchange Programme: Competitiveness

## Highly Competitive

- New York University
- University of Chicago
- Barnard College
- University of Pennsylvania
- University of Sydney
- University of Melbourne
- McGill University
- Nanyang Technological University
- Georgetown University
- George Washington University

## Moderately Competitive

- Chinese University of Hong Kong
- Boston College
- National University of Singapore
- University of Notre Dame
- University of Toronto
- University of Florida
- University of North Carolina, Chapel Hill
- University of Queensland
- University of Western Australia

## Least Competitive

- Drexel University
- University of Nottingham, Ningbo
- National University of Singapore
- University of Massachusetts, Amherst
- University of Wisconsin, Madison
- City University of Hong Kong
- University of British Columbia



# International Exchange: Restrictions and Reminders

Prior to submitting your application, all your selected international exchange locations **must be approved by your Academic Mobility Coordinator**.

Some universities have specific restrictions to note. This might impact your decision making when it comes to selecting your location preferences on your application. For example:

- **University of Pennsylvania:** Only open to students studying at UPenn's College of Arts and Sciences
- **Drexel University:** Can only pursue exchange during Hilary Term only, due to their academic calendar structure
- **Barnard College:** Women's college that enrolls female students only. Hilary Term only.
- **Mahidol University:** Uniform required. Students must purchase a uniform upon arrival.
- **Universities in China:** Universities in China do not permit Chinese citizens to participate in the exchange programme.
- **Universities in Canada:** Per Canadian student visa regulations, students can only participate in exchange for one term, full year exchanges are not permitted.

*Visit the "Where Can I Go" page on the Global Mobility website for more details and a full list of restrictions.*

# International Exchange: University of California

- University of California has **10 campuses**: Berkeley, San Diego, San Francisco, Irvine, Davis, Santa Cruz, Los Angeles, Riverside, Merced and Santa Barbara.
- If you receive an offer to apply for exchange at University of California, you will then apply to UC and note your top three campuses on your application.
- Please research a minimum of three UC campuses. Due to the demand at some of the more popular campuses and course availability, UC may place applicants at campuses other than their first choice. Explore all opportunities UC has to offer!
- The decision on your campus placement is determined by UC. After your application is reviewed by UC, you will be notified of your campus placement.
- Please keep this placement process in mind when considering University of California as an exchange location.

# International Exchange: Restrictions

Some students will be restricted in terms of where they can go whereas students in some School/Departments are taking modules that are easier to access across the world:

- **Engineering Students:** Can only go abroad for a Full Year or Hilary Term. Semester 1 only exchange is not permitted.
- **Computer Science Students:** Computer Science courses can be limited at certain partner universities due to the capacity to enrol exchange students and the popularity of the courses.
- Students taking single honours subjects such as **History, English Literature, or Mathematics** tend to have more options available as these subjects tend to be widely offered across the world and their academic programme is not as rigid.

# International Exchange: Approved in recent years

Students studying **Computer Science** have previously gone to (sample list):

Computer Science
New York University
Seoul National University
University of California
University of Florida
University of Toronto
University of Waterloo
University of Melbourne
McGill University

# International Exchange: Approved in recent years

Students studying **Engineering** have previously gone to (sample list, confirm branch of engineering courses are available):

## Engineering

University of California

University of Florida

University of California

University of Melbourne

University of New South Wales

University of North Carolina Chapel Hill

University of Sydney

University of Wisconsin, Madison

# International Exchange: Approved in recent years

Students taking **Global Business** have in the past gone to (sample list):

## Global Business

University of Western Australia

Monash University

University of California

University of Melbourne

Chinese University of Hong Kong

University of Technology Sydney

Singapore Management University



# International Exchange: Approved in recent years

**BESS** with a focus on **Economics** have gone to: **BESS** with a focus on **Business** have gone to:

Chinese University of Hong Kong

City University of Hong Kong

Drexel University

McGill University

University of Florida

University of Pennsylvania

University of Waterloo

University of Western Australia

Yonsei University

University of Wisconsin

Monash University

Seoul National University

Sungkyunkwan University

University of Melbourne

University of Southern California

Barnard College

Boston College

Chinese University of Hong Kong

City University Hong Kong

City University of Hong Kong

Drexel University

Korea University

McGill University

Monash University

Seoul National University

Singapore Management University

Stellenbosch University

Sungkyunkwan University

University of Auckland

University of Florida

University of Hong Kong

University of Melbourne

University of Queensland

University of Southern California

University of Waterloo

University of Western Australia

Yonsei University



# International Exchange: Approved in recent years

**BESS** with a focus on **Political Science** have gone to:

Boston College

McGill University

Singapore Management University

University of Auckland

University of North Carolina

University of Wisconsin

**BESS** with a focus on **Sociology** have gone to:

Drexel University

Stellenbosch University



# International Exchange: Approved in recent years

**Single Honours Law** Students can apply to:

Australian National University (Canberra)

National University of Singapore

University of Queensland

University of Stellenbosch

City University of Hong Kong

Singapore Management University

**English Studies** students have gone to:

University of Melbourne

Barnard College

University of California

University of Southern California

University of Waterloo

University of Chicago

**Theoretical Physics** students have gone to:

University of California

Waseda University

University of North Carolina



# International Exchange: Approved in recent years

Students studying **MSISS** have gone to:

## MSISS

Boston College

University of Auckland

University of California

University of Florida

University of Sydney

University of North Carolina, Chapel Hill

Drexel University

Students taking **Mathematics** have gone to:

## Mathematics

University of California

University of Pennsylvania

University of Tokyo

University of Chicago

McGill University



# International Exchange: How to Select your Exchange Location Preferences

## Step 1:

Review and research available host universities and confirm course availability. Can select up to 6 host university preferences.



## Step 2:

Attend Information Sessions. Discuss your exchange host university preferences with your Academic Mobility Coordinator and receive approval.



## Step 3:

Provide your host university preferences on your application to Trinity Global and submit by the Nov. 15th deadline.

# Accepting an Offer from Trinity Global for International Exchange

- Usually approx. three offer rounds will take place with **the majority of offers issued in the first round**. Places that become available will then be offered in the second round and so on.
- While we would love to be able to offer every student their first preference, this is not possible, and **the majority of students will not be offered their first choice due to available exchange places at partner universities**.

***Scenario 1:** Sara applies for International Exchange and lists a preference of four universities in her application. During the first round, she is offered Monash University. This is her third choice. If Sara accepts this offer, **she will not be offered any other places in subsequent rounds** but it means that she will get to go on exchange. She decides that she would prefer to hold out in hopes of being offered her first preference, NYU, so she rejects the offer to Monash University. In the second round, Sara is not offered anything. In the third round, she is offered Kyoto University which is her fourth preference. She accepts as she has always wanted to go to Japan but she wonders if she should have accepted her first round offer...*



# Accepting an Offer from Trinity Global for International Exchange – Student Testimonial

**Audrey Brown, PPES 2025:** *When first applying for International Exchange, I hoped to attend the University of Melbourne, in Australia. During the first round, I received an offer from Yonsei University in South Korea. I knew very little about the university or country but decided to do some research before rejecting and trying for Melbourne again in round two. After emailing with Trinity students who had attended Yonsei in previous years, I decided to accept the offer after hearing about their experiences. I think it is important to remain open to the prospect that you may not get your first offer, and find comfort in the fact that many students share a similar experience, and still have a wonderful time on exchange.*



# A Word of Caution...

When it comes to deciding whether to accept an offer or not, it is worth bearing the following scenario in mind:

***Scenario 2:** Sam has applied for International Exchange and has listed five universities for exchange location preferences on his application. When the first round is issued, he is offered University of Florida, his fifth choice. Sam isn't happy with this and decides he wants to wait to see if he receives a better offer. He rejects University of Florida. Sam is not offered anything in the second round. The third and final rounds are issued, and he does not receive another offer because all his other preferences are full. Sam does not get to go on exchange.*







**Trinity College Dublin**

Coláiste na Tríonóide, Baile Átha Cliath

The University of Dublin

**Erasmus+**



# Erasmus + Where can I go?

*Available destinations vary by school*

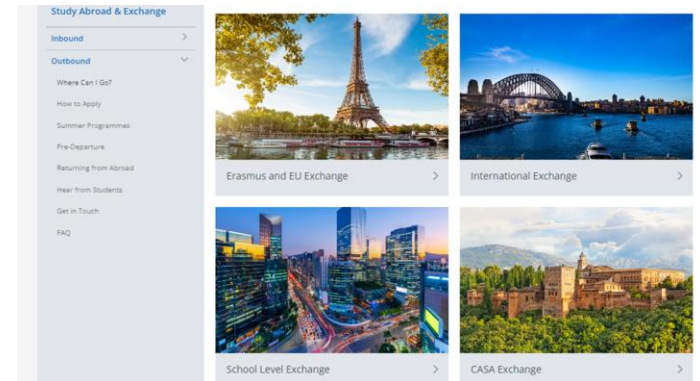
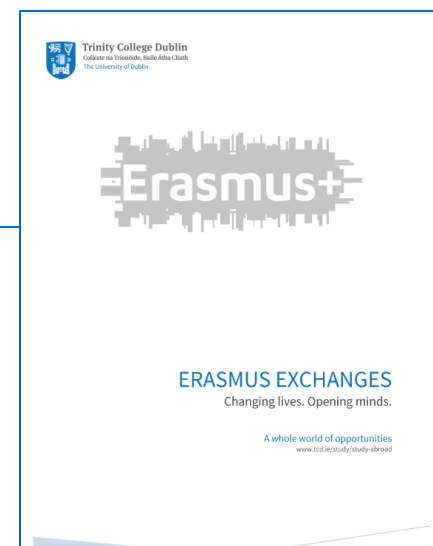
## Over 200 partner universities

- Austria
- Belgium
- Cyprus
- Czechia
- Denmark
- Estonia
- Finland
- France
- Germany
- Greece
- Hungary
- Iceland
- Italy
- Lithuania
- Malta
- Norway
- Poland
- Portugal
- Serbia
- Slovakia
- Spain
- Sweden
- The Netherlands
- Turkey
- UK & Switzerland\*



# Erasmus + Where can I go?

- Attend your departmental information sessions, if applicable
- Department Coordinator contacts and destinations can be viewed on the online Erasmus Destinations List. Don't forget to check your School/Department webpages for updated information!
- Note: Some TCD departments' participate in Erasmus traineeships (placements and/or research) often in lieu of a study based experience.





**Trinity College Dublin**

Coláiste na Tríonóide, Baile Átha Cliath

The University of Dublin

## Other mobility options



# College Wide Erasmus+

- Trinity is a part of some networks that offer Erasmus+ exchanges not tied to a particular TCD School/Department
- **CHARM/Coimbra Group** exchange network: Trinity Global. View the fact sheet online for more information.
  - Apply for these programmes via the college wide, international exchange application.
- **ELAN** (European Liberal Arts Network): Managed by Dr David Ditchburn, School of Histories and Humanities
  - Faculty of Arts students only





**Trinity College Dublin**

Coláiste na Tríonóide, Baile Átha Cliath

The University of Dublin

# Finances



# International Exchange: Global Mobility Bursary

---

- Students going on an international exchange are eligible to apply for a Global Mobility Bursary.
- This is a separate application form sent to the eligible cohort by Trinity Global.
- Competitive application process
- Typically, bursaries are between 500-1000 euro.
- Students on SUSI grants are prioritised for this funding.

# Erasmus+: Grant for Study

Funding dependent on student demand – not guaranteed

## €385 per month in 24/25

Denmark, Finland, Iceland, Liechtenstein, Luxembourg, Norway, Sweden

Switzerland Swiss-European Mobility Programme (SEMP) funding (approx. €400)

## €330 per month in 24/25

Austria, Belgium, Bulgaria, Croatia, Cyprus, Czechia, Estonia, France, Germany, Greece, Hungary, Italy, Lithuania, Malta, Netherlands, Poland, Portugal, Serbia, Slovakia, Slovenia, Spain, North Macedonia, Turkey

Green travel: financial incentive + up to four funded travel days

€30-80 in case of travel support or €50 on top of mobility grant

All amounts are subject to change

€150 per month top-up for trainees

Funding for mobility to other countries is possible (max. 20% of overall budget)

Funding for UK exchanges is not available through Erasmus+.



# Erasmus + Additional Supports

---

## Historically students in receipt of SUSI grants (national criteria)

- SUSI & BTEA grant is still provided while on Erasmus
- €250/pm top-up **may** be allocated if the mobility is mandatory (dependent on adequate funding being allocated to Trinity by HEA and European Commission). The Global Mobility Team provides more information on this as it is made available by the HEA/European Commission.
- Extra financial support is also available to students with a disability who may require specific services while abroad.



**Trinity College Dublin**

Coláiste na Tríonóide, Baile Átha Cliath

The University of Dublin

# Considerations



# Application requirements

---

## Grade requirement

- College requirement is that students must have a minimum grade of 2:2. Please note: this is a minimum requirement and the process is highly competitive.
- Some Schools/Departments may require 2:1

## Language requirement

- Typically a B2 in the language of instruction is required
- **Erasmus+** Language support & placement test available through EU 'Online Linguistics Support'

# Academic Considerations

**Your study abroad semester/year counts toward your final Trinity grade.** You will create a learning agreement with pre-approved modules that you can take at the host university to satisfy your Trinity course requirements.

## Course load requirements:

- Full Year: 60 ECTS / 1 Semester: 30 ECTS. Assessed on 45 or 20
- Your modules must be approved by your academic coordinator
- Do not register for a module without their approval
- Ensure you are taking the correct amount of credits (IN LINE WITH PATHWAY)
- The Learning Agreement must be signed before you begin your exchange
- Beware! Some universities do not allow you to change your course choices

# Accommodation & Visas

---

- Remember: Housing is not guaranteed by the majority of universities. Most will provide you with advice on how to find suitable housing but you will ultimately be responsible for finding and financing your own accommodation and travel.
- The cost of accommodation varies significantly – research this carefully.
- Visas can take time and money to apply for, please consider this if you are going on an international exchange or a non-European citizen going on an Erasmus exchange.

# Disability supports & access



- [Askds@tcd.ie](mailto:Askds@tcd.ie) - reference Erasmus
- Get in touch with your DS Officer about going abroad.
- Online checklist
- [Inclusivemobility.eu](https://www.inclusivemobility.eu)

A screenshot of the Trinity College Dublin website. The top navigation bar includes 'Students', 'Courses', 'Research', and 'Faculties &amp;'. A search bar is located on the right. The main header is blue with 'Trinity Disability Service' in white. Below the header is a navigation menu with 'Menu', 'Home', 'Exam Supports', 'Student Supports' (highlighted in teal), and 'Application for Reasonable Accommodat'. The breadcrumb trail reads 'SUPPORT &amp; RESOURCES / ERASMUS DISABILITY SUPPORTS'. The main heading is 'Participation in the Erasmus programme by disabled students- both inbound and outbound'. The text below reads: 'Students who have secured reasonable accommodation with the Disability Service who are going on Erasmus- both inbound and outbound should contact their'.

# Budgeting

---

- Accommodation
- Travel
- Food & Transportation
- Visa expenses
- Health & Travel insurance
- Academic Supplies
- Entertainment/social expenses
- Trinity College fees (NOT host university fees)

Remember: Students should thoroughly research the host country cost of living

**Note: The Erasmus Grant and Global Mobility Bursary are distributed *after* arrival in host country. You should not factor these amounts into your initial budget.**

# Diversity and Safety

- Consider doing some research into your host country; customs, attitudes, laws etc.
- You might want to explore LGBTQ+ travel guides, talk with LGBTQ+ friends or colleagues who have visited the region/area before
- Research the laws of your host country regarding LGBTQ+ issues and expressions of LGBTQ+ identity.
- Try to carry out your research when travelling abroad outside your country of exchange i.e. to neighbouring countries – attitudes and legal context may be different
- Get in touch with the host university to see if they have any recommendations or suggestions for campus resources once you have been accepted.
- <https://erasmusgeneration.org/> Erasmus Generation: Cost of Living, Rainbow Index, Quality of Life
- Resources from Diversity Abroad: <https://www.beglobalii.com/articles>







**Trinity College Dublin**

Coláiste na Tríonóide, Baile Átha Cliath

The University of Dublin

## Next Steps



# International Exchange: Next steps

Sept./Oct.

- Research your options: Available host universities, countries, available courses, cost of living etc.
- Attend information sessions hosted by your school. Utilise advising hours hosted by Trinity Global.

Oct./Nov.

- Applications open on October 7th. Discuss your exchange location preferences with your academic mobility coordinator in your school to confirm eligibility.
- Submit your application to Trinity Global – Application Deadline: November 15th.

January

- First round of offers for exchange are released. Subsequent rounds will be released on an ongoing basis.
- Please consider your offer carefully, you can not accept conflicting offers. *E.g. One offer to Melbourne and one to Utrecht for Semester 1 2025*

Spring

- Trinity Global will be contacting you about the nomination and application process for your exchange location.
- Please note, most students going abroad in Hilary Term may be nominated and need to apply to their exchange university later in the summer or in early Autumn. This is based on the host universities application cycle for exchange.

Later

- Attend pre-departure sessions hosted by Trinity Global.
- Prepare for departure
- Complete and sign your Learning Agreement
- Apply for Global Mobility Bursary

# International Exchange: Timeline

Applications Open Monday, October 7th

Deadline for applications: Friday, November 15th

Offers: First round offers sent Wednesday, January 8th

# The Central Application Form

- The Central Application Form will be made available on the following website:  
<https://www.tcd.ie/study/study-abroad/outbound>
- Select the universities you wish to apply for ranked in preference. Only select universities you are sure you wish to attend as you could be offered **any** of your preferences. This is a very competitive programme.
- You will be asked to write a short personal statement. In the personal statement, you will have to outline why you believe your top choices are the best academic and personal fit.
- Multiple rounds of offers may be involved. You must accept or reject the offer within the specified time period or it will be offered to another student.
- **Please Note: Your School may have school-specific requirements to apply. Please consult your school coordinator for further information**

# Helpful Application Tips and Reminders



**Spaces are limited at exchange partners and locations are competitive. Trinity Global cannot guarantee you will be offered your preference. We will have 3+ rounds of offers for exchange locations. It is the student's responsibility to respond to the offer prior to the deadline.**



**Once you have accepted your offer, you will be notified of the next steps to be nominated to the host university and submit your application as an incoming exchange student.**



**For Joint Honours or Major/Minor students; make sure to email all academic coordinators relevant to your degree to ensure you fulfil all requirements to continue in your program at Trinity.**



**List of Academic Mobility Coordinators per Program/Department :**  
**<https://www.tcd.ie/study/study-abroad/outbound/apply/apply-international.php>**



# Erasmus+: Next Steps

## Now

- Research options, and attend department info sessions
- Follow your department(s) application procedure (Note: for College-Wide Erasmus (CHARM/Coimbra), apply through central exchange application)

## New Year

- Receive placement decision from school, and accept or reject offer
- Trinity nominates you to partner university (later for Hilary Term exchange)
- Complete host university application form (later for Hilary Term exchange)

## Later

- Organise grant documentation (Insurance, Erasmus Learning Agreement, etc.)
- Attend pre-departure session
- Prepare for departure (find accommodation, etc.)

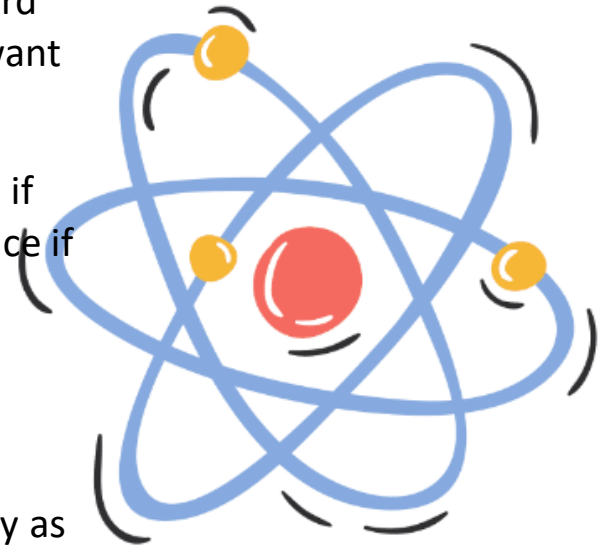
# Trinity Joint Honours (TJH) Students

---

- Normally expected to study both subjects while abroad.
- You must ensure partner universities offer the subject areas/modules you require & that they allow you to take modules in multiple subject areas on exchange.
- View <https://www.tcd.ie/tjh/currentstudents/exchange/> webpage for detailed information about pathway requirements and FAQs for JH students.
- **Contact: [tjh.erasmus-studyabroad@tcd.ie](mailto:tjh.erasmus-studyabroad@tcd.ie)**
- **TJH will be hosting information sessions for students interested in global mobility. Tuesday 8th October**

# What about my moderatorship?

- If your degree requires you to pick a moderatorship subject for third year, you will need to ensure that whichever host university you want to go to can accommodate your expected moderatorship area.
- For example, if you are a TR060 student, you will need to research if potential universities offer enough specific modules in Neuroscience if that is your expected moderatorship for next year.
- The same scenario is in place for TR063 students taking Physical Sciences.
- It is always good to have alternative choices picked out for mobility as moderatorships are not guaranteed.





# Support

**Trinity Global:** [global.mobility@tcd.ie](mailto:global.mobility@tcd.ie)

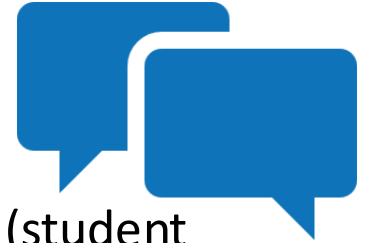
## Academic Mobility Coordinators

- Advises on modules, credits, and sign learning agreement.

**Peer to Peer support: Student ambassadors & peer contacts** (student advising will be promoted once applications are open)

**Disability Officer:** [askds@tcd.ie](mailto:askds@tcd.ie)

**Follow us on social media:** @TCDGlobal (Instagram, Twitter)  
@TCDglobalmobility (Instagram)



# Virtual Mobility Advising Hours

- **Beginning the Week of 7th October, students may book in for advising appointments with the Global Mobility team:**
- **<https://outlook.office365.com/owa/calendar/OutboundMobilityVirtualAdvising@TCDUD.onmicrosoft.com/bookings/>**





**Trinity College Dublin**

Coláiste na Tríonóide, Baile Átha Cliath

The University of Dublin

## Student Panel





**Trinity College Dublin**

Coláiste na Tríonóide, Baile Átha Cliath

The University of Dublin

**Questions?**

