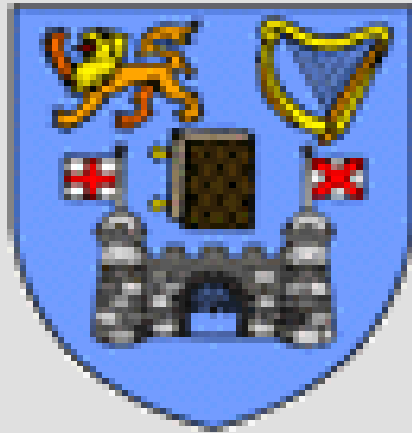


University of Dublin



Trinity College

Dean of Graduate Studies' Annual Report
2010/11
for
University Council on 16th May, 2012

including
Postgraduate Admissions Data for 2011/12

Professor Veronica Campbell
Dean of Graduate Studies

Contents

	Page
1. Introduction	3
2. Graduate Studies Office	3
3. Graduate Studies Committee	5
4. New Course Proposals	7
5. Processing and Admissions: Postgraduate Student and Course Numbers	8
6. Taught Postgraduate Courses – Overview of Student Numbers	18
7. Maintenance of Academic Quality	19
8. College Awards	21
9. Travel Grants	22
10. Publications	23
11. Other Reporting Items	24
12. Postgraduate Admissions Data 2011/12	26
13. Research and Taught Postgraduate Courses – Funding Sources	28

List of Tables, Figures and Appendices

Tables

		Page
Table 1	Postgraduate new entrants and total registered graduate students from 2002/03	9
Table 2	Postgraduate student numbers from 1994/95 by category	10
Table 3	Breakdown of students by gender on Research, Masters and Postgraduate Diploma courses registered from 2005/06	12
Table 4	Breakdown of research students by gender and Faculty Grouping in 2006/07, 2007/08, 2008/09, 2009/10 and 2010/11	14
Table 5	Breakdown of Taught Masters students by gender and Faculty Grouping in 2006/07, 2007/08, 2008/09, 2009/10 and 2010/11	15
Table 6	Breakdown of Postgraduate Diploma students by gender and Faculty Grouping in 2006/07, 2007/08, 2008/09, 2009/10 and 2010/11	16
Table 7	Overview of Student Numbers on Postgraduate Taught Courses	18
Table 8	Applications for College research awards from 2006/07 to 2010/11	21
Table 9	Travel grant applications and reimbursements in 2010/11	22

Figures

Figure 1	Annual fluctuations of full-time and part-time students from 1993/94	11
Figure 2	Number of Taught Masters and Postgraduate Diploma courses from 1994/95	17
Figure 3	Examination period (in terms of months) of research theses inclusive of 25 theses referred for major revision (when relevant)	20

Appendices

Appendix 1	Taught Postgraduate Courses – Student Numbers 2006/07 to 2011/12	30
Appendix 2	Results of approved Research and Professional Degree Examinations (by degree) for the past five years	40
Appendix 3	Number of research degrees awarded by Faculty Grouping and degree in 2010/11	42
Appendix 4	Nationality of students in 2009/010 and 2010/11	43
Appendix 5	List of external examiners for research degrees by Faculty in 2010/11	46
Appendix 6	List of Taught Course External Examiners by Faculty in 2010/11	71
Appendix 7	Applications to the research register for entry in 2011/12	85
Appendix 8a	Applications to the postgraduate taught courses by School for entry in 2011/12 – Direct Entry	87
Appendix 8b	Applications to the postgraduate taught courses by School for entry in 2011/12 – via PAC	88
Appendix 9a	Research Student Funding Sources in 2011/12	99
Appendix 9b	Taught Postgraduate Student Funding Sources in 2011/12	102

1. Introduction

The purpose of this annual report to the University Council is threefold:

- (i) to provide the University Council, and the wider College community, with the statistical information needed to make informed policy decisions about graduate education in the College,
- (ii) to report on the work of the Graduate Studies Office, and
- (iii) to make the required statutory reports to University Council regarding examiners appointed for higher degrees.

Statistical data cover the period 2010/11, and postgraduate admissions data cover the period from September 2011 to the end of February 2012.

Once approved by Council, this report will be posted on the Graduate Studies Office Website at http://www.tcd.ie/Graduate_Studies/

2. Graduate Studies Office

The Dean of Graduate Studies is head of the Graduate Studies Office (GSO). The Dean is supported by two Administrative Officers, one Senior Executive Officer and four Executive Officers.

The Dean of Graduate Studies has statutory responsibility for admitting all postgraduate students and administering the regulations regarding their academic progression and examination. The Graduate Studies Office (GSO) acts as the central coordinating office for postgraduate education in College.

Responsibilities of the Dean of Graduate Studies supported by the Graduate Studies Office include:

Development of Graduate Education Policy

This is achieved by

- (a) Convening the Graduate Studies Committee consisting of all the Directors of Teaching and Learning (Postgraduate) in the Schools, Keeper of Readers' Services, the ISS Representative, President and Vice President of the Graduate Students' Union, and bringing before it matters of importance relating to graduate education including changes to the regulations concerning higher degrees (see *University Calendar Part 2* page 9 for the Terms of Reference of the Graduate Studies Committee);
- (b) Attending national and international *fora* (e.g. Irish Universities Association, European Universities Association, Coimbra Group Taskforce, Dublin Region Higher Education Alliance meetings) and using this information to develop discussion papers on matters of importance for developments in graduate education;
- (c) Representing the graduate education function on College committees and compiling and interpreting information regarding graduate education for such committees;

- (d) Updating and revising procedures of admission, progression and examination, and making the required changes to the *University Calendar Part 2*;

Administration of postgraduate courses

There are 171 separate courses of study at postgraduate level in the College in 2010/11. These are administered by the GSO and Schools. Administrative tasks include

- (a) Providing specialist advice and assistance to Schools in the development of new postgraduate courses. Specifically, the GSO staff ensure that proposed admissions criteria adhere to the College regulations, that the ECTS values apportioned to modules are correct, that proposed entries comply with the *University Calendar Part 2* regulations and the *Prospectus*, and that the documentation prepared for the Graduate Studies Committee and the University Council is complete;
- (b) Liaising with the College community to produce the annual *Postgraduate Prospectus*;
- (c) Dealing with initial enquiries about postgraduate programmes both in the areas of research and taught (Masters and Postgraduate Diploma) courses;
- (d) Monitoring the quality of taught postgraduate courses by reviewing and distributing course examiners' reports and ensuring that recommendations are acted on;
- (e) Assisting the Quality Office with reviewing taught postgraduate programmes as part of the School review process, and also initiating occasional course reviews outside the normal process when required;
- (f) Promoting the College's postgraduate programmes through advertisement and attendance at national and international career exhibitions and fairs.

Provision of services for graduate students

- (a) Setting and monitoring the quality of graduate admissions to the College. All students are admitted to the University by the Dean of Graduate Studies *via* one of two postgraduate admission routes:
 - i. On-line admissions facility *via* the Postgraduate Applications Centre (PAC)
 - ii. Direct admissions: the GSO receives and processes applications for admission liaising with Directors of Teaching and Learning (Postgraduate) in the Schools for research students and the Course Directors for admission to taught programmes.
- (b) Setting regulations for students' academic progress and monitoring these regulations, e.g. transfer from the Masters to Ph.D. register, confirmation on the Ph.D. register, time on the research register;
- (c) Attending to postgraduate student 'cases' in correspondence with the student, the Course Director, the supervisor, or the Director of Teaching and Learning (Postgraduate) (DTLP);
- (d) Processing research thesis submissions and appointment of external examiners for taught courses and research degrees;

- (e) Receiving and reviewing examination results, distributing examiners reports, and convening of appeals by Academic Appeals Committee for Graduate Students (which is a sub-committee of the Graduate Studies Committee);
- (f) Preparing documentation for the sub-committee of Board and Council for the approval of higher degrees.

3. Graduate Studies Committee

The Graduate Studies Committee (GSC) normally meets monthly during statutory term. The composition of the Graduate Studies Committee is listed in the *University Calendar Part 2*.

In 2010/11 there were eight meetings of the GSC. Minutes of the GSC are available *via* the Trinity College Local Home Page¹. The Committee discussed the following issues of interest to the general postgraduate community in College:

• Innovation Academy (GS/10-11/004)

The Committee was updated on the activities of the Innovation Academy such as the public launch of the TCD-UCD Innovation Academy on 19th November 2010, the delivery of the first two core modules in Innovation and Entrepreneurship (Creative Thinking & Innovation; Opportunity Recognition) in Michaelmas term 2010, the development of a full course proposal for the Graduate Certificate in Innovation and Entrepreneurship, the allocation of ten Innovation Bursaries and the registration of those Ph.D. students onto the educational activities of the Innovation Academy.

• PRTL (GS/10-11/005; GS/10-11/015; GS/10-11/029; GS/10-11/036; GS/10-11/047)

The Committee was updated on cycle 5 of PRTL funding which had resulted in the creation of new structured Ph.D. programmes in a number of research areas across the College, to be led by TCD or by a partner institution with TCD input. The PRTL funding for 90 TCD Ph.D. studentships was announced in 2010-11 with a view to recruitment for the 2011-12 academic year. The HEA had requested that a prospectus be developed for each structured Ph.D. programme and those were noted by the Committee.

• Implementation of Graduate Education Strategy (GS/10-11/006; GS/10-11/039; GS/10-11/042; GS/10-11/044)

The Committee was updated on the implementation of the Graduate Education Strategy, approved by the University Council in May 2010, including modularisation of postgraduate courses, developing strands and sharing modules. The aim was to ensure that the modularisation of postgraduate courses was complete by 2012 and that an “eBook of Modules” was completed. A working group had been established to consider issues such as administration of the fee for modules shared across Schools and participation in stand-alone modules. The minimum numbers of students on taught masters was discussed extensively by the GSC during the academic year.

¹ http://www.tcd.ie/Graduate_Studies/staff/committee/committeepapers/index.php

- **Trinity Inclusive Curriculum (GS/10-11/008)**

The Committee was updated on the type of resources available on the TCD website to be used at School level for the preparation of accessible handbooks and teaching activities. It was confirmed that the new initiative of organising a Cultural Orientation, particularly useful for international students, would be a regular component of the general orientation for new postgraduate students. The major contribution of the Graduate Students' Union in this initiative is acknowledged.

- **GeneSIS Project (GS/10-11/012; GS/10-11/032)**

The Committee was updated on the progress of the GeneSIS project, shown examples of how the new student system would work in relation to postgraduate students, and advised that the introduction of a new system provides a timely opportunity to harmonize divergent College practices.

- **Copy Editing (GS/10-11/014; GS/10-11/022)**

The Committee discussed a concern identified by the Irish Universities Association (IUA) that students availing of the services of professional copy editors could be in breach of examination procedures. The regulations were amended to state that copy editing was prohibited, unless prior approval to avail of this service had been granted.

- **Academic Year Structure (GS/10-11/028; GS/10-11/036; GS/10-11/054)**

The Committee discussed modifications to Academic Year structure as requested by the University Council and finally concluded that there was no appetite for changing the academic year structure at present. The discussion on the Academic Year Structure did not represent a formal College position but was part of a wider consultation process.

- **Guidelines for Ph.D. Examination (GS/10-11/030)**

The Committee discussed some issues that had arisen in relation to the Ph.D. examination such as the respective roles of the independent chairperson, the student's supervisor and the internal examiner during the viva voce. The guidelines that are distributed to examiners were amended in light of the discussion.

- **IUA Deans of Graduate Studies Group (GS/10-11/033)**

The Committee was advised that an Inter-Institutional Memorandum of Understanding, related to mobility between institutions for specific graduate programmes and the recognition of quality and credit between the participating institutions, had been signed by the seven Universities under the 4th Level Network of the Irish Universities Association.

- **Postgraduate Modules (GS/10-11/034)**

The Committee discussed the issue of inclusion of undergraduate modules into postgraduate courses when some conversion or upskilling was required. It was clarified that assessment and learning outcomes should be at a Level 9 on the NQF and an explicit maximum permissible amount of credits should not be exceeded.

- **Diplomates and Upgrade to Masters (GS/10-11/046; GS/10-11/050; GS/10-11/058)**

The Committee discussed and changed the current regulation that restricted students who exit with a Diploma from proceeding to a Masters award within the same course at a future date. The recommendation was subsequently approved by the University Council at the meeting of 20th April 2011.

- **International Postgraduate Student Recruitment (GS/10-11/055)**

The Committee discussed a review of international student applications on the PAC system. The data showed that a high proportion of international applicants were not receiving a prompt response to their application which was contrary to the Council-approved College policy whereby an international applicant should receive a decision within two weeks of submitting a complete application.

- **Course-related terminology (GS/10-11/063)**

The Committee approved a proposal that the GeneSIS team review all course-related terminology, where considerable inconsistency existed and, in consultation with appropriate colleagues, prepare a glossary of terminology for consideration by the USC and GSC before submission to the University Council in Michaelmas Term 2011.

- **PAC (GS/10-11/064)**

The Committee was appraised of the fact that the student management system called SITS contains a recruitment facility which would allow applicants to postgraduate courses to apply directly to the College on-line thereby eliminating the need to use PAC. The Committee expressed support for the introduction of an improved postgraduate applications facility.

4. New Course Proposals

In 2010/11 the Graduate Studies Committee discussed and recommended the following twelve new course proposals, ten of which were subsequently approved by the University Council to commence in September 2011, and four new strand proposals.

- M.Sc. in Alcohol and Drug Interventions (subsequently withdrawn)
- M.Sc. in Business and Management
- Masters in Medicine
- M.Sc. in Psychoanalytic Psychotherapy (two existing M.Sc. courses were combined)
- M.Phil. in Children's Literature
- M.Phil. in Digital Humanities and Culture
- M.Phil. Public History and Cultural Heritage
- Postgraduate Diploma in Clinical Dental Technology
- Postgraduate Diploma in Special Care Dentistry
- Postgraduate Certificate in Innovation and Entrepreneurship

- M.Sc. in Biological Psychiatry – (approved by the University Council on 15 February 2012 for entry in September 2012)

- M.Sc. in Laboratory Medicine – (subsequently withdrawn)
- M.Sc. in Medical Imaging - new strand proposal in Computed Tomography
- M.Sc. in Advanced Radiotherapy Practice - new strand proposal in Radiation Therapy Treatment Planning
- M.Sc. in Nursing - new strand proposal in Child Health and Wellbeing
- M.Sc. in Nursing - new strand proposal in Specialist Nursing

In 2010/11 the Graduate Studies Committee considered the following proposals and provided feedback to the Senior Lecturer on two new 5 year integrated courses whereby students will be admitted through the CAO and be under the remit of the Senior Lecturer and the Calendar Part 1 regulations:

- BA (Mod), M.Sc. Computer Science
- BA, BAI, B.Sc. (Ing), MAI (Studia) Engineering and Engineering with Management

5. Processing and Admissions: Postgraduate Student and Course Numbers

As the first point of contact for all postgraduate students, the GSO advises all incoming students with regard to registration, financial information on fee payment, and immigration requirements (for non-EU applicants). The GSO organises the Orientation Meeting for new postgraduate students where they are advised on services available to them in College.

There have been approximately 23,000 enquiries per year over the past three years, either directly to the office over the phone or by email. In 2011/12, the Graduate Studies Office processed around seven thousand applications on line for postgraduate admission both taught and research. Some applications were submitted directly to Schools and, of these, 111 were made offers.

Table 1 illustrates fluctuations in the number of postgraduate students registered over the last nine years. In 2010/11 there has been a marked decrease of 432 students (8.1%) who registered for the year on the postgraduate register in comparison to the 2009/10 year. The decrease affected both all new entrants to the postgraduate register and new entrants for the first time in TCD. It is worth noting that this is the first time since 2002/03 when the upgoing trends of increasing numbers of postgraduates in those categories was reversed and so significantly.

	2002/03	2003/04	2004/05	2005/06	2006/07	2007/08	2008/09	2009/10	2010/11
All new entrants to postgraduate register	2,432	2,269	2,363	2,411	2,572	2,729	2,858	2928	2702
New entrants – first time in TCD	2,103	1,964	1,982	2,026	2,117	2,270	2,358	2431	2299
Total number registered for that year	4,193	4,207	4,298	4,531	4,803	5,036	5,206	5,335	4,903
Increase or decrease on previous year in terms of registered students	374	14	91	233	272	233	170	129	-432
% increase or decrease on previous year	9.70%	0.33%	2.20%	5.40%	6.00%	4.90%	3.40%	2.50%	-8.10%

Table 1. Postgraduate new entrants and total registered graduate students from 2002/03

The breakdown of postgraduate student numbers in the three major classes of research, taught and postgraduate diplomas is presented in Table 2.

Year	Research			Taught Masters			PG Diploma			Total PGs		
	f/t	p/t	total	f/t	p/t	total	f/t	p/t	total	f/t	p/t	total
1994/95	1043	132	1175	398	155	553	159	276	435	1600	563	2163
1995/96	1056	127	1183	393	195	588	139	330	469	1588	652	2240
1996/97	1069	137	1206	361	242	603	159	393	552	1589	772	2361
1997/98	1060	185	1245	483	340	823	145	419	564	1688	944	2632
1998/99	1130	178	1308	474	379	853	234	776	1010	1838	1333	3171
1999/00	1221	196	1417	474	420	894	170	1186	1356	1865	1802	3667
2000/01	1161	186	1347	467	443	910	247	1085	1332	1875	1714	3589
2001/02	1226	207	1433	509	499	1008	235	1143	1378	1970	1849	3819
2002/03	1306	184	1490	579	572	1151	517	1035	1552	2402	1791	4193
2003/04	1391	139	1530	607	704	1311	564	802	1366	2562	1645	4207
2004/05	1491	220	1711	673	706	1379	513	695	1208	2677	1621	4298
2005/06	1533	248	1781	734	710	1444	437	869	1306	2704	1827	4531
2006/07	1600	275	1875	740	707	1447	484	997	1481	2824	1979	4803
2007/08	1662	284	1946	740	807	1547	477	1066	1543	2879	2157	5036
2008/09	1783	306	2089	783	890	1673	453	991	1444	3019	2187	5206
2009/10	1962	315	2277	914	870	1784	455	819	1274	3331	2004	5335
2010/11	1899	334	2233	963	749	1712	385	573	958	3247	1656	4903

Table 2. Postgraduate student numbers from 1994/1995 by category

The following conclusions can be drawn from Table 2:

- The number of postgraduate research students in both categories (full-time and part-time) has decreased by 44 registered students in comparison to 2009/10.
- Research students constitute 45.5% of all postgraduate students in 2010/11 compared to 42.7% in 2009/10 and 40.1% in 2008/09.
- Research students make up 13.3% of the total student body of 16,747 in 2010/11 which is a slight decrease compared to 13.5% in 2009/10 but an increase compared to 12.9% in 2008/09.

- Of the 2,670 students registered for taught courses in 2010/11, 1,712 (34.9% of all graduate students on the postgraduate register) were undertaking a Masters degree and 958 (19.5%) were registered for a Postgraduate Diploma compared to 1,784 (33.4%) on a Masters degree and 1,274 (23.8%) on a Postgraduate Diploma in 2009/10, and 1,673 (32.1%) and 1,444 (27.7%) respectively in 2008/09.
- Part-time student numbers decreased slightly further in 2010/11 to 1,656 with 33.8% of all postgraduate students registering for part-time study in comparison to 37.5% in 2009/10 and 42% in 2008/09. As in the previous two years, the majority of part-time students were undertaking Taught Masters and Postgraduate Diploma courses while the number of part-time research students was relatively low by comparison at 334. This number, however, has continued to increase from 315, 306 and 284 registered students in 2009/10, 2008/09 and 2007/08 respectively.

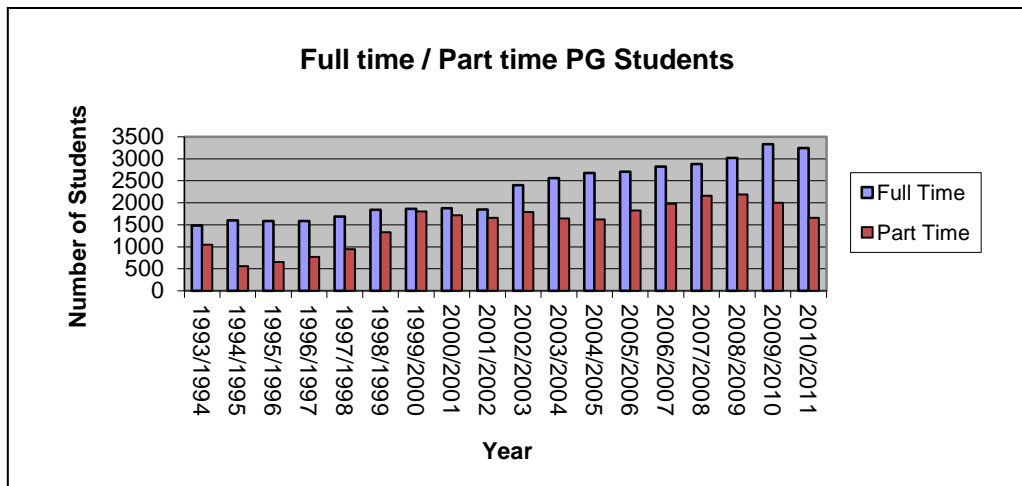


Figure 1. Annual fluctuations of full-time and part-time students from 1993/94

Figure 1 illustrates that from the year 1999/00, when it increased significantly to 1,802, the overall annual number of registered part-time students fluctuated only slightly and remained within the same range.

Appendix 4 provides comparative data for students' nationality for 2010/11 and 2009/10.

Of all the 4,903 students registered in 2010/11

- 100 (2.03%) students came from Africa compared to 105 (1.97%) students out of 5,325 in 2009/10 which indicates a slight proportional increase even though in numerical terms there has been an annual decrease of 5 students,
- 272 (5.5%) came from Asia compared to 234 (4.4%) in 2009/10 reflecting an annual increase of 38 students,
- 18 (0.4%) came from Australia and New Zealand compared to 12 (0.2%) in 2009/10 i.e. reflecting an annual increase of six students,

- 282 (5.8%) came from North and Central America compared to 252 (4.7%) in 2009/10 i.e. reflecting an annual increase of 30 students,
- 16 (0.3%) came from South America compared to 13 (0.2%) in 2009/10 i.e. reflecting an annual increase of three students,
- There was a significant decrease of 496 (12%) in the number of EU fee paying postgraduate students coming from Ireland from 4015 in 2009/10 down to 3519 in 2010/11.
- There were 646 (15.5%) non Irish EU fee paying students from the EU countries in 2010/11 compared to 656 (14%) in 2009/10 which indicates a slight proportional increase even though in numerical terms there has been an annual decrease of 10 students,
- 50 (1%) came from the non EU countries in Europe in 2010/2011 compared to 38 (0.7%) in 2009/10 reflecting an increase of 12 students,
- Similar to 2009/10 there are 13 countries from which at least 20 students came to study in Trinity in 2010/11 i.e. the United States of America (226, 195 in 2009/10), Great Britain (185, 196 in 2009/10), Germany (94, 88 in 2009/10), Italy (86, 82 in 2009/10), China (79, 62 in 2009/10), India (68, 65 in 2009/10), Poland (63, 70 in 2009/10), Canada (42, 46 in 2009/10), France (40, 46 in 2009/10), Spain (31, 42 in 2009/10), Nigeria (36, 35 in 2009/10), Greece (27, 27 in 2009/10) and Pakistan (20, 21 in 2009/10). These 997 (975 students in 2009/10) represent 20.3% of total postgraduate students.

Table 3 below shows the breakdown of students by gender registered on Research, Masters and Postgraduate Diploma programmes in 2010/11 indicating that unlike in 2009/10 the number of male and female students respectively has decreased slightly. The overall male/female ratio of 1:1.3 in 2010/11 has remained at the 2009/10 level of 1:1.4.

	Male					Female					Total				
	10/11	09/10	08/09	07/08	06/07	10/11	09/10	08/09	07/08	06/07	10/11	09/10	08/09	07/08	06/07
Research	1130	1124	1028	932	907	1103	1153	1061	1014	968	2233	2277	2089	1946	1875
Taught Master	645	721	698	610	577	1067	1063	975	937	870	1712	1784	1673	1547	1447
Postgraduate Diplomas	328	398	473	504	438	630	876	971	1039	1043	958	1274	1444	1543	1481
Total	2103	2243	2199	2046	1922	2800	3092	3007	2990	2881	4903	5335	5206	5036	4803
Total Percentage	42.9%	42%	42.2%	40.6%	40%	57.1%	58%	57.8%	59.3%	60%	100%	100%	100%	100%	100%

Table 3. Breakdown of students by gender on Research, Masters and Postgraduate Diploma courses registered from 2005/06

Tables 4-6 (below) illustrate a breakdown of student numbers between three Faculty Groupings, and the data illustrates that

- The number of female research students has decreased by 50 (4.5%) in comparison to the previous year whereas the number of males has increased by 6 students (0.5%),
- the highest percentage of male research students i.e. 51.8% (585 out of all registered research males in 2010/11), compared to 52.8% (593 students in 2009/10) are registered in Engineering, Mathematics and Science,
- the highest percentage of female research students i.e. 47.4% (523 out of all registered research females in 2010/11), compared to 43.9% (506 students in 2009/10), are registered in Arts, Humanities and Social Sciences,
- overall, fewer males than females register on taught courses; with a further decrease of 76 male students from 721 in 2009/10 to 645 in 2010/2011 registered on the Masters degree courses, which can be compared to the corresponding increase of 4 females from 1063 in 2009/10 to 1067 in 2010/2011
- With respect to Postgraduate Diploma students, the overall number of males decreased further in 2010/11 from 398 to 328. A significant difference here however lies in the fact that almost twice as many females (630) registered on a postgraduate diploma course than males (328) in 2010/11. The number of females has also decreased further by 246 students i.e. 28% from 2009/10.

FACULTY GROUPING	Research: Males										Research: Females									
	2006/07		2007/08		2008/09		2009/10		2010/11		2006/07		2007/08		2008/09		2009/10		2010/11	
	ft	pt	ft	pt	ft	pt	ft	pt	ft	pt	ft	pt	ft	pt	ft	pt	ft	pt	ft	pt
ARTS, HUMANITIES & SOCIAL SCIENCES	252	55	247	58	270	64	293	58	316	64	371	70	398	72	405	67	441	65	441	82
ENGINEERING, MATHEMATICS & SCIENCE	457	35	460	36	502	40	548	45	532	53	288	17	291	12	304	12	330	14	304	16
HEALTH SCIENCES	74	34	93	38	107	45	121	59	112	53	158	64	173	68	195	78	229	74	194	66
<i>sub-totals</i>	<i>783</i>	<i>124</i>	<i>800</i>	<i>132</i>	<i>879</i>	<i>149</i>	<i>962</i>	<i>162</i>	<i>960</i>	<i>170</i>	<i>817</i>	<i>151</i>	<i>862</i>	<i>152</i>	<i>904</i>	<i>157</i>	<i>1000</i>	<i>153</i>	<i>939</i>	<i>164</i>
<i>Totals</i>	<i>907</i>		<i>932</i>		<i>1028</i>		<i>1124</i>		<i>1130</i>		<i>968</i>		<i>1014</i>		<i>1061</i>		<i>1153</i>		<i>1103</i>	

2006/07 Research: M/F 907/968 [1:1.06]
2007/08 Research: M/F 932/1014 [1:1.08]
2008/09 Research: M/F 1028/1061 [1:1.03]
2009/10 Research: M/F 1124/1153 [1:1.02]
2010/11 Research: M/F 1130/1103 [1:0.98]

Table 4. Breakdown of Research students by gender and Faculty Grouping in 2006/07, 2007/08, 2008/09, 2009/10 and 2010/11

FACULTY GROUPING	Taught Masters: Males										Taught Masters: Females									
	2006/07		2007/08		2008/09		2009/10		2010/11		2006/07		2007/08		2008/09		2009/10		2010/11	
	ft	pt	ft	pt	ft	pt	ft	pt	ft	pt	ft	pt	ft	pt	ft	pt	ft	pt	ft	pt
ARTS, HUMANITIES & SOCIAL SCIENCES	179	121	163	130	185	151	210	128	235	105	349	158	341	206	372	205	411	203	441	199
ENGINEERING, MATHEMATICS & SCIENCE	88	100	113	103	104	142	130	100	111	91	44	62	44	59	43	66	58	44	82	63
HEALTH SCIENCES	33	56	29	72	36	80	45	108	34	69	47	210	50	237	43	246	60	287	60	222
<i>sub-totals</i>	300	277	305	305	325	373	385	336	380	265	440	430	435	502	458	517	529	534	583	484
<i>Totals</i>	577		610		698		721		645		870		937		975		1063		1067	

2006/07 Taught Masters: M/F 577/870 [1:1.5]
2007/08 Taught Masters: M/F 610/937 [1:1.5]
2008/09 Taught Masters: M/F 698/975 [1:1.4]
2009/10 Taught Masters: M/F 721/1063 [1:1.5]
2010/11 Taught Masters: M/F 645/1067 [1:1.6]

Table 5. Breakdown of Taught Masters students by gender and Faculty Grouping in 2006/07, 2007/08, 2008/09, 2009/10 and 2010/11

FACULTY GROUPING	Postgraduate Diploma: Males										Postgraduate Diploma: Females									
	2006/07		2007/08		2008/09		2009/10		2010/11		2006/07		2007/08		2008/09		2009/10		2010/11	
	ft	pt	ft	pt	ft	pt	ft	pt	ft	pt	ft	pt	ft	pt	ft	pt	ft	pt	ft	pt
ARTS, HUMANITIES & SOCIAL SCIENCES	66	150	73	159	89	146	74	116	50	71	196	504	227	513	249	489	261	398	214	208
ENGINEERING, MATHEMATICS & SCIENCE	18	154	18	163	12	182	11	156	15	152	7	66	11	68	4	67	2	61	2	48
HEALTH SCIENCES	13	37	15	40	4	40	9	32	6	34	184	86	170	86	95	67	98	56	98	60
<i>sub-totals</i>	<i>97</i>	<i>341</i>	<i>106</i>	<i>362</i>	<i>105</i>	<i>368</i>	<i>94</i>	<i>304</i>	<i>71</i>	<i>257</i>	<i>387</i>	<i>656</i>	<i>408</i>	<i>667</i>	<i>348</i>	<i>623</i>	<i>361</i>	<i>515</i>	<i>314</i>	<i>316</i>
<i>Totals</i>	<i>438</i>		<i>468</i>		<i>473</i>		<i>398</i>		<i>328</i>		<i>1043</i>		<i>1075</i>		<i>971</i>		<i>876</i>		<i>630</i>	

2006/07 Diplomas: M/F 438/1043 [1:2.4]
2007/08 Diplomas: M/F 468/1075 [1:2.3]
2008/09 Diplomas: M/F 453/991 [1:2.2]
2009/10 Diplomas: M/F 398/876 [1:2.2]
2010/11 Diplomas: M/F 328/630 [1:1.9]

Table 6. Breakdown of Postgraduate Diploma students by gender and Faculty Grouping in 2006/07, 2007/08, 2008/09, 2009/10 and 2010/11

Postgraduate Taught Courses

There were 171 separate courses of study in 2010/11 as compared to 183 in 2009/10 and 174 in 2008/09. The 2010/11 was the first year which shows a slight reversal of the upgoing trend in the number of courses which until that point had increased by 58% over the previous ten years. Occasionally, entry to some courses may be suspended for a given year for academic or resource-related reasons. Additionally, some courses may only have an intake on a biennial basis.

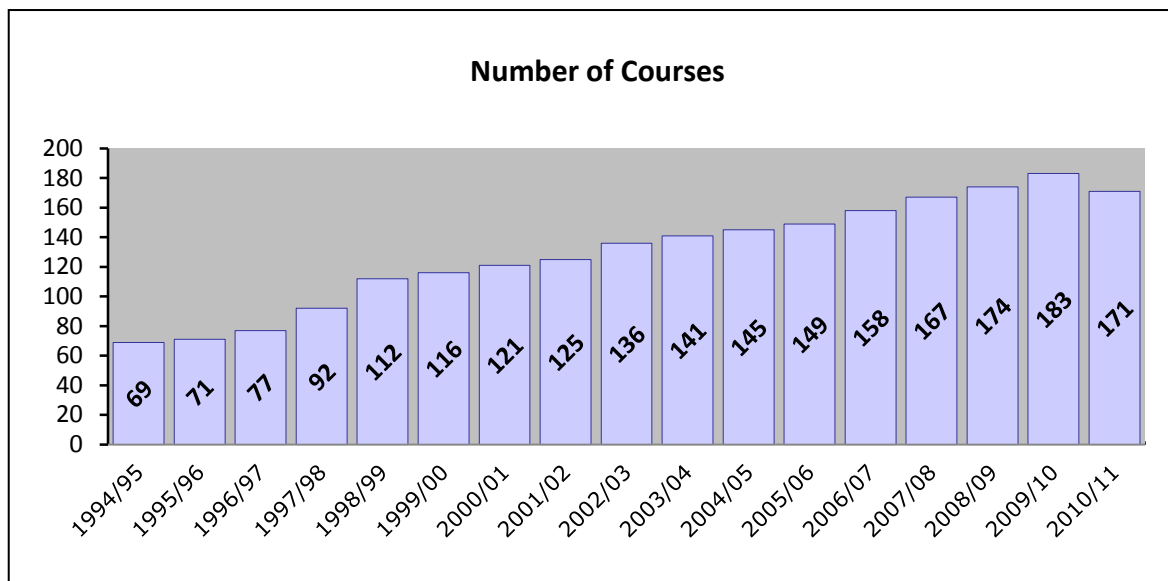


Figure 2. Number of Taught Masters and Postgraduate Diploma courses from 1994/95

6. Taught Postgraduate Courses – Overview of Student Numbers

An overview of student numbers on taught postgraduate courses (M.Phil. / M.Sc. / PG Dip.) in 2011/12 shows that a number of courses in all three Faculties are operating below optimal capacity, with fewer than 10 students. Several courses in each Faculty did not run in 11/12 due to low student numbers.

- 94 courses across the three Faculties ran with fewer than 10 students, constituting 45% of the total number offered
- 19 courses did not run due to insufficient numbers (9%)
- 27 of 57 Health Science courses had fewer than 10 students. When combined with courses that did not run due to low student numbers, 54% of taught postgraduate courses in this Faculty raise some cause for concern
- 8 courses in Engineering, Maths and Science had fewer than 10 students (24%). 5 courses (15%) have not had an intake for several years, raising the combined total of courses that require attention to 39%
- The Faculty of Arts, Humanities and Social Sciences had the highest number of courses with fewer than 10 students, comprising 50% of 119 courses on offer. AHSS had 11 courses that did not run in 2011/12, (8%)

Faculty	Taught Courses (M.Phil./M.Sc. /PG Dip.)	<10 students	Did Not Run	Combined: requiring attention
Arts, Humanities & Social Sciences	119	59	10	69
%		50%	8%	58%
Engineering, Maths & Science	33	8	5	13
%		24%	15%	39%
Health Sciences	57	27	4	31
%		47%	7%	54%
Totals	209	45%	9%	54%

Table 7: Overview of Student Numbers on Postgraduate Taught Courses in 2011/12

7. Maintenance of Academic Quality

Academic quality of graduate education is monitored by external examiners who play different functions depending on their role, either to assess taught courses or to examine research theses of individual students.

- *Taught Courses – External Examiners*

Most external examiners are appointed for a three-year period; although for some part-time courses examiners are appointed for four years. All external examiners for taught courses must complete a standard course assessment form for the first two years of their tenure and, in their final year, are required to complete a more extensive report. Appendix 6 contains a list of External Examiners for taught courses for noting and approval by Council.

By 30th March 2012, 119 annual reports for 2010/11 have been received. Of these, 49 were for M.Sc. courses, 27 for M.Phil. courses, one for M.S.W., one for MBA, six for Doctorate in Dental Surgery (D.Ch.Dent), four for LL.M., one for M.Ed., four for professional taught doctoral programme D.Clin.Psych., one for the D.Coun.Psych., and 25 for Postgraduate Diplomas.

In addition, the academic integrity and overall quality of all new postgraduate Masters course proposals are reviewed by external academic assessors, internationally recognised experts in their discipline, before submissions are made to the University Council for approval.

- *Research Degrees*

An external examiner is appointed by the Dean of Graduate Studies to provide an independent academic assessment of each student's research thesis.

The list of external examiners, as approved by the Sub-committee of Board and Council for Higher Degrees, is provided in Appendix 5, for reference. There were 148 External Examiners engaged by the Faculty of Arts, Humanities and Social Sciences, 108 by Health Sciences and 202 by Engineering, Maths and Science.

The results of the examinations of research theses that took place from September 2010 to August 2011 are given in Appendix 2, along with comparative data for the three preceding years.

While a substantial number of theses are awarded "as it stands" (13.6%), the majority (73.6%) are approved subject to "minor corrections". In cases where a thesis falls below the accepted standard for the award of the degree, major revisions are usually requested (6.3%). Students must register for a 6-month revision period before re-submitting the revised thesis for re-examination, the outcome of which is almost always a greatly improved thesis.

Figure 3 shows the time taken from first submission of the thesis to approval by the Sub-committee of Board and Council for Higher Degrees. This period includes the time taken to

- (i) nominate examiners
- (ii) appoint examiners and send the theses to them
- (iii) arrange a *viva* (if required)
- (iv) receive the examiners reports
- (v) make a decision and inform the student
- (vi) complete revisions
- (vii) bring recommendations to the Sub-committee for Higher Degrees (a Sub-committee of Board and Council).

There are a number of points in the sometimes-lengthy thesis examination process where backlogs can occur. The majority of students progress from examination to confirmation by Board and Council within 6 months (55%) while most remaining students complete the process within 12 months (39%). A small percentage (4%) of these examinations take up to 18 months to complete. The Graduate Studies Office reviews the administrative processes regularly and proactively works with the College offices to streamline systems and improve efficiencies.

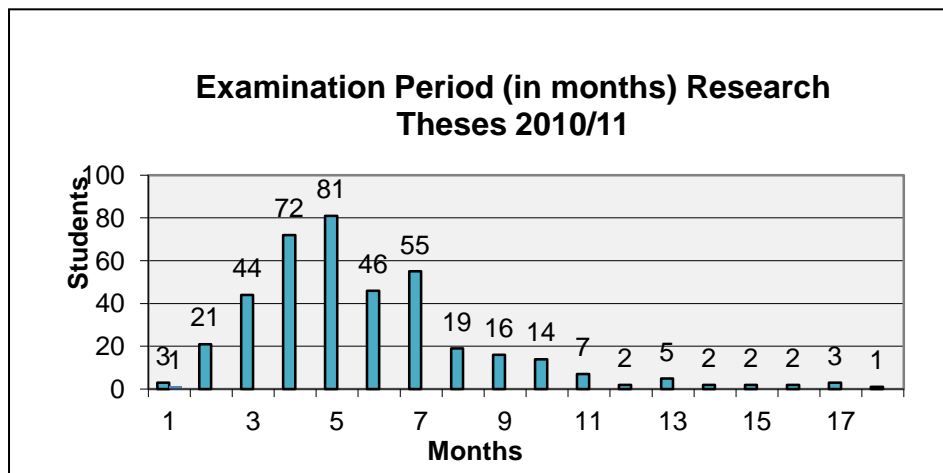


Figure 3. Examination period (in terms of months) of research theses inclusive of theses referred for major revision (when relevant)

Appendix 3 allows for comparison of the number of research degrees awarded by Faculty Grouping and degree. Compared to the previous year, the number of awards by degree varies within class (e.g. M.Sc., Ph.D.) but also within a Faculty Grouping within a class.

- *Higher Doctorates*

There were four applications for Higher Doctorates in 2010/11.

8. College Awards

The Graduate Studies Office is responsible for administering a number of separate College research award schemes. In 2010/11 there were two major categories of research awards available to full-time students. Table 8 below includes the number of applications for these awards from 2006/07 to 2010/11.

	Ussher Awards (code 1244)					Postgraduate Studentships (code 1252)				
	10/11	09/10	08/09	07/08	06/07	10/11	09/10	08/09	07/08	06/07
No. of Applicants	190	230	205	185	270	201	294	262	203	264
No. of Allocations	6	6	6	6	6	65	65	65	65	65

Table 8. Applications for College research awards from 2006/07 to 2010/11

- *Ussher Fellowships (Award code 1244)*

These awards are allocated to exceptionally well-qualified candidates of outstanding promise. They are open to competition by graduates of any nationality, for research in any branch of learning in the College (subject to availability of resources and competent supervision in the chosen area). The awards are for a three-year period of research leading to a Ph.D. They cover fees and provide a maintenance component of €16,000 per annum. There are six Faculty Ussher Fellowships in every academic year. Three are allocated to successful applicants in the Faculty of Arts, Humanities and Social Science; two for the Faculty of Engineering, Mathematics and Science and one for the Faculty of Health Sciences. There are, in addition, five named Ussher Fellowships individually awarded every three years.

- *Postgraduate Studentships (Award code 1252)*

There are 65 Postgraduate Research Studentships offered annually to highly qualified candidates to enable them to undertake postgraduate studies in the College. The holder is required to engage in teaching-related activities, as designated by their Director of Teaching and Learning (Postgraduate), to a maximum of six hours per week. The awards are allocated to each Faculty in proportion to the number of research students registered the previous year. For EU and non-EU fee-paying students they provide an annual maintenance of €8,000 and full fee remission.

In 2008/09 changes were made to the internal system of allocating these awards. Each Faculty now allocates studentships to their individual schools early in the calendar year, and the schools nominate recipients accordingly. Two further significant changes were made: continuing students on the research register are now eligible to apply for these awards, and each individual award can be reallocated on an annual basis if the school so wishes. There have been no changes to the terms of the studentship and stipend (i.e. full fee remission for 3 years and an annual stipend of €8,000).

9. Travel Grants

The GSO administers a travel grant scheme which receives funding from composite sources, such as the Benefaction Fund (called the Graduate Studies Research Travel Fund) yielding around €18,000 annually and from the Trinity Trust. Allocations are made to graduate research students for attendance at conferences related to their research or for students who wish to carry out research abroad to supplement research already undertaken in Ireland. Awards are made quarterly and applications are made in advance of travel. Application details are available on the GSO website.²

In the academic year 2010/11, 212 students were granted a total sum of €79,410.00. This represents an increase on the allocations in 2009/10 when 173 students were allocated €69,412.44. The total amount claimed and reimbursed for the year by the end of August 2011 was €71,629.27.

Destination	No. of students who applied in 2010/11*	No. of students allocated funding in 2010/11*	Amount requested in 2010/11*	Amount allocated in 2010/11*	Amount claimed in 2010/11*
Europe	173	126	€72,631.09	€33,989.33	€27,550.01
USA & Canada	64	51	€58,366.96	€34,176.05	€32,976.54
Rest of World	39	35	€18,230.18	€11,244.62	€11,102.63
Total	276	212	€149,228.23	€79,410.00	€71,629.27

*Table 9. Travel grant applications and reimbursements in 2010/11 (*all figures from the accounting period from 1 September 2010 to the end of August 2011)*

² http://www.tcd.ie/Graduate_Studies/currentstudents/funding/travelgrants/index.php

10. Publications

The GSO is responsible for the production of three major publications and sources of information. These are the *University Calendar Part 2 for Graduate Studies and Higher Degrees*, the *Postgraduate Prospectus* and the Graduate Studies Office website.

- *The University of Dublin Calendar Part 2 for 2010/11*

The *University Calendar Part 2* contains the rules governing the academic progress and conduct of all postgraduate students, both taught and research. Since 1999/00 the *Calendar Part 2* has included the set of general regulations applicable to all postgraduate students, as well as more detailed regulations relating to students undertaking research and taught courses. This largely eliminates the need to refer to the *Calendar Part 1* for postgraduate matters. Offprints of the *Calendar Part 2* are given to all staff and all postgraduate students at registration and are now sent, *gratis*, to all universities in Ireland. There were 5,000 copies of the *Calendar Part 2* printed in 2006/07; 6,000 in 2007/08; 6,500 in 2008/09, 6,500 in 2009/10 and 6,500 in 2010/11.

- *Postgraduate Prospectus 2011*

Since 1998 the *Postgraduate Prospectus* has been the primary printed form of publicity produced by the GSO for graduate students. It is distributed *gratis* to all intending applicants and all academic staff of the College. It is also sent to all universities in Ireland and the U.K., as well as to a selection of major institutions in Europe and elsewhere. In 2010/2011, the GSO also produced an e-book and CD version of the prospectus.

- *Graduate Studies website*

There have been almost 60,000 visits (unique and return visitors), to the website so far in 2011, with the most popular pages being the Prospectus and the Taught Courses listing. Online traffic comes mostly from Ireland, followed by the EU member states, the USA and India. Individual web visitors have come from as far away as New Zealand, Tuvalu and Nepal. Additionally, many hits have been received from non-profit organisations, international government agencies and educational websites in the USA.

11. Other Reporting Items

- *Postgraduate Open Day*

The Graduate Studies Office hosted the annual Postgraduate Open Day on Thursday 27th January 2011. Representatives from each School were on hand to offer advice and information on postgraduate study at TCD. The event was advertised extensively; maximising the use of online advertising and social media to attract over 700 prospective taught and research students to the College.

- *Facebook and Twitter Pages*

The Graduate Studies Office established Facebook and Twitter pages as an innovative and cost-effective way to reach prospective students from all around the world. They provide an excellent forum for GSO to communicate information on new courses, scholarship opportunities, upcoming events, etc to an international audience. Feedback to date had been very positive with 650 'likes' and 379 'followers' on Facebook and Twitter respectively.

- *Strategic Innovation Fund (SIF)*

SIF I: The Dean of Graduate Studies continued to coordinate the College's postgraduate participation in the SIF I initiative to develop generic training modules for research students, in collaboration with UCC and NUIG. Several events were run for six inter-institutional high-level generic modules, which can be incorporated into Ph.D. student programmes at the partner institutions. TCD coordinated two modules on "Research Ethics" and "Statistics and Data Analysis", and participated in four other modules led by NUIG ("Commercialisation of Research and Technology Transfer" and "Information Literacy") and by UCC ("Research Methods for the Life Sciences" and "Teaching and Learning Skills").

SIF II: As part of the Graduate Education strand under the SIF2 Dublin Region Higher Education Alliance (DRHEA) project, several schools in College developed, in collaboration with UCD, DCU, NUIM, DIT and ITT, advanced Ph.D. modules in a number of disciplines. The strand also coordinates an annual conference. Despite funding cuts, significant progress has been made. The Dean serves on the steering committee for this programme.

- *Fourth Level Network*

The Dean of Graduate Studies continues to represent Trinity College Dublin on the IUA's Fourth Level Network, which has proved to be a very successful forum for collaboration and communication between the Deans of Graduate Studies from the 7 Universities.

- *National Academy for the Integration of Research, Teaching and Learning (NAIRTL)*

The Dean of Graduate Studies continues to represent Trinity College Dublin on the NAIRTL working group for supervisor training which is developing shared resources to support academic staff with the supervision of research students.

- *Postgrad Ireland Awards*

The MSc in Computer Science (Networks and Distributed Systems) won Postgraduate Course of the Year in the IT Category. The M.Sc. in Neuroscience was also commended in the Sciences category.

- ***The Innovation Academy***

The TCD-UCD Innovation Academy is the educational centerpiece of the Innovation Alliance between TCD and UCD. It is a collaborative venture in Ph.D. education that builds on existing resources and synergies between TCD and UCD. Its mission is to develop a new breed of creative graduate, expert in their discipline, with a thorough understanding of how innovation can convert knowledge and ideas rapidly into products, services and policies for economic and social benefit.

Postgraduate Certificate in Innovation and Entrepreneurship

The Innovation Academy offered the core modules of the Graduate Certificate in Innovation & Entrepreneurship for the first time in 2010/11.

Creative Thinking and Innovation (10 ECTS) and Opportunity Recognition and Generation (5 ECTS) were made available in Michaelmas term 2010 to 36 Ph.D. students, drawn evenly from both institutions across all disciplines. During 2010-11 these modules ran on three occasions.

A core team of faculty and industry mentors (from for-profit and not-for-profit organizations) lead the seminars, mixing academic excellence with real-world experience.

Innovation Bursaries 2010

To promote innovation and research in College, 10 fully-funded interdisciplinary Ph.D. studentships were awarded in 2010 on the theme of "Sustainable Society". Competition for the bursaries was extremely high across all disciplines. The studentships cover fees and a stipend of €16,000 for four years, as well as start-up and research costs. The bursaries were awarded to interdisciplinary programmes from the Arts, Humanities, Psychology, Bioscience, Bioengineering, Computer Science, Physics and Clinical Medicine. All recipients of an Innovation Bursary engage with the TCD-UCD Innovation Academy.

Postdoctoral Innovation Bursaries

In addition, six Postdoctoral Bursaries of €5,000 each were awarded to post-doctoral researchers, to tackle exciting problems on the theme of Sustainable Society and assist them in establishing an independent research track. The postdoctoral research projects were in areas such as diverse as physics, medicine, computer science, digital arts and pharmacy.

12. Postgraduate Admissions Data 2011/12

Postgraduate admissions data have been incorporated in the GSO Annual Report since 2004, and include detailed admissions data for both research degrees and taught courses for the current academic year 2011/12 with information on the gender, fee status (EU/Non-EU), and delivery format (full-/part-time) of applicants.

a) Research applications: entry in March 2011, September 2011 and March 2012

The data presented in Appendix 7 show applications to the research register as of the 31st January 2012.

There are 1002 applicants, with the Schools of Medicine and Histories and Humanities having received the greatest number of applications (169 and 118 respectively), the School of Engineering received 99 applications, Social Sciences and Philosophy 85, Computer Science and Statistics 62, English 56 and Law 44, seven Schools received over 40 applications, five Schools received between 30 and 40 applications, three Schools received between 20 and 30 applications and six Schools received between 10 and 20 applications each.

As of 31st January 2012, there were 542 students registered on year 1 of the register – this represents an increase of 52 students on the number on year 1 of the register 1st April 2011. Of these students, 18.5% are registered with the School of Medicine, 9.78% with the School of Engineering and 8.3% with the School of Psychology.

The total number of registered research students as of 31st January 2012 was 2349. Of this number, the majority (or 88%) are within the timescale of 2 years for Masters/4 years for Ph.D. for which HEA funding is available. 23 students remain on the Masters register in year 3 and beyond, and 196 students are currently on the Ph.D. register in year 5 and upwards. The total number of students who fall outside the recommended timescale is 219, or 9.3% of total registered research students (compared to 248 or 11.6% in 2010/11 and 309 or 14.6% in 2009/10).

The breakdown of registered students into EU and non-EU fee categories indicates that 86.9% of research students (2,041) are categorised as EU for fee purposes, and 13.1% (508) non-EU.

b) Applications for taught courses: entry in September 2011 and January 2012

The data presented in Appendix 8 show applications to postgraduate taught courses in year 1 for new entrants as of the end of February 2012. 5,917 taught applications have been received by the GSO *via* PAC.

Applications for entry to postgraduate taught courses in 2011/12 were processed in two ways:

- 1) Via the PAC (Postgraduate Applications Centre) online system. Applications for the majority of taught postgraduate courses were processed entirely through this system following a successful pilot of

the system in 2006/07. A total of 5,917 applications were processed through this system for intake in September 2011 and January 2012.

- 2) Through direct admissions: applicants apply directly to the School in which they intend to study and the Graduate Studies Office subsequently receives the files of those applicants who are to be offered places.

The data presented in Appendix 8 shows that of the 5,917 applications received for taught courses (Masters and P.Grad.Dips) via PAC, 32% accepted the offer (1,876 students). 1725 of these students had registered by end of February 2012.

The breakdown of registered students into EU and non-EU fee categories indicates that 88.9% of taught course students (1,533) are categorised as EU for fee purposes, and 11.1% (192) non-EU.

13a. Research Students – Funding sources

Appendix 9a shows data extracted from the live student file at 31 January 2012 indicates that of the 2,210 registered research students on that date a little over half (1,108) were in receipt of some funding. The Faculty of Engineering, Mathematics and Science has the highest proportion of funded students with some 57% of students in receipt of funding. 46% of students in Faculty Arts, Humanities and Social Sciences have some funding and in the Faculty of Health Sciences 44% receive some funding toward their research degree.

Of the funding sources identified research accounts (code 9995) finance 40% (443) of our funded cohort. Miscellaneous accounts (code 9991 – also known as departmental accounts) are financing almost 14% (152) of the funded student body and college awards and studentships (including Ussher awards) fund 17% (193 students). 5% (52) of our funded research students are in receipt of Government of Ireland (IRCHSS) funding. These funding sources typically cover tuition fees and provide a stipend of between €8,000 and €16,000 annually to the student.

The remaining funded students for whom the source of funding is not identified are typically funded by a local authority higher education grant. These grants vary in value with some students receiving no assistance toward fees and minimal maintenance payments (€315 per annum) and others receiving up to €6,270 per annum toward tuition fees and maximum maintenance payments of €6,100 annually.

Analysis of the data extracted indicates that 1,102 of our registered research students have no specified funding source. Whilst some of these students may be in receipt of assistance from their employers the majority are wholly self-financing. Some points of interest by faculty are as follows:

Faculty AHSS

Of the 420 students in receipt of funding in this faculty 59% (247) are funded through awards or research grants which cover fees and provide stipend. 41% are in receipt of alternative, less valuable funding (local authority higher education grants)

The School of Histories and Humanities has the highest proportion of funded students with 58 % of its students funded in some way. The School of Education fares least well with only 24% of its students in receipt of any funding.

Faculty EMS

More than half of the 897 research students in the Faculty EMS are in receipt of funding and of the 515 funded students, 85% (439) receive their funding from a research account; college award or departmental account and one student in this faculty IRCHSS funding. The remaining 15% are in receipt of local authority higher education grants.

The School of Physics has the highest proportion of funded students with 71% of its 117 students in receipt of funding and it remains the School across all three faculties with the highest ratio of funded students. The School of Natural Sciences has the lowest percentage of funded students within the faculty with just under 50% (57) of its total research students (115) in receipt of funding.

Faculty HS

Although the Faculty of HS has the lowest percentage of funded students (44% of total research student body) their funded students account for the highest percentage across the three faculties of students funded by college awards; departmental accounts and research accounts – with 88% funded from these sources. The School of Dental Science has the lowest amount of funded students with only 27% (10 of its 37 registered research students) in receipt of funding whilst in the School of Pharmacy and Pharmaceutical Sciences 52% of all research students are funded.

13b. Postgraduate Taught Course Students – Funding

An analysis of data (Appendix 9b) extracted at 31 January 2012 from the live registered student file indicates that of the 2,261 registered taught course students at that date less than one third (733 students, 32%) were in receipt of funding. The main source of funding for taught postgraduate students remains the local authority higher education grant scheme which is means tested and only funds eligible students in fulltime study. Grants received vary in value with some students receiving no assistance toward fees and minimal maintenance payments (from €315 per annum) and others receiving up to €6,270 per annum toward tuition fees and maximum maintenance payments of €6,100 annually.

Other sources of funding for taught postgraduate students include courses which are subsidised under the government funded Advanced Technical Skills scheme (ATS) and similar. Students on these courses are liable for a significantly reduced annual tuition fee. In the Faculty of Health Sciences funding is also provided in some instances by Health Service Providers (HSP) and students availing of this funding mechanism pay only the student charges (sports centre levy and USI levy).

The data provided also highlights the number of registered students with fee status non-EU and the number by school who are in receipt of US Federal Aid Loans. These schemes permit students to borrow significant amounts toward their tuition fees and living costs at low interest rates with payments delayed until student has graduated and in fulltime paid employment. The majority of our US postgraduate students avail of these schemes. The data shows that of the 175 registered non-EU students (8% of total PG taught cohort), 35% (61 students) were receiving US Federal Aid. 77% (135) of the non-EU students were registered in the Faculty of AHSS, with the Faculties of EMS and HS hosting 14% (24) and 9% (16) respectively.

An analysis of the data indicates that whilst the Faculty of AHSS has the highest number of taught postgraduate students (55% of PG taught course students are registered in this faculty), only 25% of them are in receipt of any funding. Students in the Faculties of EMS and HS fare better with 41% in each faculty receiving funding.

Appendix 1. Taught Postgraduate Courses – Student Numbers 2006/07 to 2011/12

FACULTY OF ARTS, HUMANITIES & SOCIAL SCIENCES									
School	Code	Course Title	Duration	2006/07	2007/08	2008/09	2009/10	2010/11	2011/12
Business	110	Master in Business Administration (MBA)	1	23	28	29	19	27	31
	794		2						36
	566	M.Sc. in Finance	1			26	27	38	40
	567		2			6	8	18	19
	146	M.Sc. (Management) in Organisation Behaviour	2		19		10	12	DNR**
	119	M.Sc. (Management)	2	2	5	7	6	6	1
	679	M.Sc. (Management) in International Business	2					NLU*	NLU*
	694	M.Sc. in Business and Management							11
	792	Masters in International Management	1				11	22	16
	793	Masters in International Management	2					1	1
760	PG Dip. in Management	1			1		NLU*	NLU*	
Drama, Film & Music	721	M.Phil. in Film and History	1	9	10	8	14	9	12
	738	M.Phil. in Theatre and Performance	1	6	5	7	12	12	9
	868	Master in Fine Art (Playwriting)	1						6
	869		2						1
	780	M.Phil. in Irish Film, Music & Theatre	1			DNR	5	4	DNR** (Course now discontinued)
	779	M.Phil. in Musicology and Music Theory	1			DNR	DNR	DNR**	DNR** (Course now discontinued)
Education	749	Master in Education	2	53	59	66	50	50	3
	752		1	10	8	3	3	NLU*	NLU*
	232	Master in Studies (School Leadership)	1	17	42	36	23	NLU*	NLU*
	601	H.Dip. in Education (Primary Teaching)	1	87	85	163	163	93	Admissions moved to Associated Colleges
	120	H.Dip. n Education							1
	583	Professional Diploma in Education (Business Studies)	1						10

584	Professional Diploma in Education (English)	1						15
585	Professional Diploma in Education (Geography)	1						9
586	Professional Diploma in Education (History)	1						11
587	Professional Diploma in Education (Irish)	1						12
588	Professional Diploma in Education (Modern Languages)	1						16
589	Professional Diploma in Education (Mathematics)	1						8
590	Professional Diploma in Education (Music)	1						9
591	Professional Diploma in Education (Religious Studies)	1						11
592	Professional Diploma in Education (Science)	1						16
762	PG Dip. in Education (Secondary Teaching)	1	128	131	126	128	129	NLU*
828	M.Ed. (Aggression Studies)	1					1	DNR**
829		2					10	13
834	M.Ed. (Co-Operative Learning)	1					1	DNR**
836		2					4	10
838	M.Ed. (Drama in Education)	1					1	1
839		2					13	21
841		3						1
848	M.Ed. (Foundation Studies)	1					2	6
849		2					12	20
850		3						1
851	M.Ed. (Guidance and Counselling)	2						24
852	M.Ed. (Leadership and Management)	1					1	4
853		2					23	47
854		3					6	7
856	M.Ed. (Positive Behaviour Management)	2					7	14
861	M.Ed. (Special Educational Needs)	1						1
862		2					10	21

	866	M.Ed. (Teaching and Learning Higher Education)	3					12	18
	867	M.Ed. (One Year Thesis)	1					60	25
	770	In Service Education - 4 modules (SLSS)	1		12	28		NLU*	NLU*
	771	In Service Education - Disability Needs Assessment	1		20			NLU*	NLU*

English	255	M.Phil. in Creative Writing	1	15	16	15	13	15	16
	789	M.Phil. in Irish Writing	1	17	26	12	17	18	14
	764	M.Phil. in Literatures of the Americas	1		6	15	7	8	6
	698	M.Phil. in Children's Literature	1						13
	692	M.Phil. in Digital Humanities and Culture	2						2
	693		1					7	
	709	M.Phil. in Popular Literature	1	19	24	22	26	19	19

Histories & Humanities	778	M.Phil. in Classics	1			7	10	8	9
	550	M.Phil. in Gender and Women's Studies	1		9	6	10	10	6
	551		2	6	1	2	2	3	3
	704	M.Phil. in Irish Art History	1	12	10	10	11	9	12
	225	M.Phil. in Medieval History	1	8	1	6	7	4	6
	732	M.Phil. in Modern Irish History	1	10	22	13	20	16	16
	278	M.Phil. in Early Modern History	1						8
	690	M.Phil. in Public History and Cultural Heritage	2						2
	691		1					7	
	171	M.Phil. in Reformation & Enlightenment Studies	1	8	1	DNR	5	NLU*	NLU*

Languages, Literature & Cultural Studies	745	M.Phil. in Comparative Literature	1	3	4	5	13	5	7
	628	M.Phil. in Early Irish	2	2		1		2	DNR** (Biennial Intake)
	795	M.Phil. in European	1				9	10	16

		Studies							
	742	M.Phil. in German Literature with Language Pedagogy	1		2	1	DNR	DNR**	DNR**
	715	M.Phil. in Literary Translation	1	13	16	10	9	7	11
	671	M.Phil. in Medieval Language, Literature and Culture	1	4	2	5	7	6	5
	627	PG Dip. in Old Irish	1		2			DNR** (Biennial Intake)	3
	185	M.Phil. in Textual and Visual Studies	1	6	5	DNR	4	7	7

Law	607	LL.M. (Master in Laws)	1	71	45	73	101	91	55
	870	Master in Laws (International and Comparative Law)	1						6
	871	Master in Laws (International and European Business Law)	1						18

Linguistics, Speech & Communication Sciences	518	M.Phil. in Applied Linguistics	1		7	11	5	9	3
	519		2	12	3	1	3	5	5
	761	M.Phil. in English Language Teaching	1		6	6	3	8	6
	520	M.Phil. in Linguistics	1		9	8	13	6	5
	521		2	7	5		1	4	5
	534	M.Phil. in Speech and Language Processing	1	4	5	4	4	6	2
	535		2						1
	758	M.Sc. in Clinical Speech and Language Studies	2	12	5	6	5	10	13
759	PG Dip. in Clinical Speech and Language Studies	1			2	8	3	2	

Psychology	785	M.Sc. in Applied Behaviour Analysis	1			8	10	9	8
	743	M.Sc. in Applied Psychology	1	20	25	34	34	32	31
	744		2	10	7	8	3	3	DNR**
	763	M.Sc. in Clinical Supervision (Psychology)	1			6	9	2	DNR**
			2			6	5	4	DNR**
205	M.Sc. in Counselling	2	20	20	20		NLU*	NLU*	

	Psychology								
720	H.Dip. in Psychology	2	22	18	20	18	41	39	
784	PG Dip. in Applied Behaviour Analysis	1		22	20	20	15	8	
149	M.Sc. (Applied Behaviour Analysis)	1						1	
712	PG Dip. in Clinical Supervision (Psychology)	1	8	4	5	2	DNR**	DNR**	

Religions, Theology & Ecumenics	514	M.Phil. in Ecumenics	1		9	3	9	1	NLU*
	515		2		2	4	1	NLU*	NLU*
	528	M.Phil. in Peace Studies	1	45	36	31	28	2	NLU*
	529		2		6	8	2	1	NLU*
	552	M.Phil. in Reconciliation Studies	1	15	11	6	8	NLU*	NLU*
	553		2	10	1	2	2	2	1
	790	Master in Theological Studies (Mode A)	3					25	31
	791	Master in Theological Studies (Mode B)	6				5	10	11
	813	M.Phil. International Peace Studies	1					26	45
	814		2				2	3	
	824	M.Phil. Intercultural Theology & Interreligious Studies	1					5	10
	825		2				2	6	
	809	M.Phil. in Conflict Resolution and Reconciliation	1						9
	810		2						6
673	PG Dip. in Conflict & Dispute Resolution Studies	1	11	20	24	17	13	15	

Social Sciences & Philosophy	262	M.Phil. in Ethnic & Racial Studies	1	13	12	12	6	3	NLU*
	826	M.Phil. in Race, Ethnicity, Conflict	1					13	20
	214	M.Phil. in Psychoanalytic Studies	1	8	6	11	8	8	12
	568	M.Sc. in Comparative European Politics	1			18	19	12	1
	569		2			2		1	
	506	M.Sc. in Economics	1	28	19	20	24	12	9
	507		2			1	1	4	5
645	M.Sc. in Economic Policy Studies	2			19	DNR** (Biennial Intake)	16	14	

	821	M.Sc. in International Politics	1					19	22
	695	M.Sc. in Political Science	1						5

Social Work & Policy	252	M.Sc. in Applied Social Research	1	19	25	19	24	11	19
	235	M.Sc. in Child Protection & Welfare	1	7	6	1	5	7	7
	625	M.Sc. In Drug and Alcohol Policy	2	10		10		9	9
	668	Master in Social Work	1						2
	669		2	22	22	22	20	44	47
	229	PG Dip. in Child Protection & Welfare	1	16	15	13	17	14	11
	879	M.Sc. Disability Studies	1					7	5
	878		2					4	5
	816	M.Sc. European Employment Studies	1						6
817	2							1	

FACULTY OF ENGINEERING, MATHS & SCIENCE

School	Code	Course Title	Duration	2006/07	2007/08	2008/09	2009/10	2010/11	2011/12
Computer Science	617	M.Sc. in Health Informatics	2	13	18	21	25	40	31
	616	PG Dip. in Health Informatics	1	23	16			EA***	EA***
	781	M.Sc. in Interactive Digital Media	1			22	15	17	20
	769	M.Sc. in Interactive Entertainment Technology	1		14	21	20	13	22
	700	M.Sc. in Management of Information Systems	2	33	37	43	33	67	54
	739	M.Sc. in Mobile and Ubiquitous Computing	2	17	16	10	16	19	8
	619	M.Sc. in Networks & Distributed Systems	1	15	19	16	24	7	16
	750	M.Sc. in Technology and Learning	2	26	26	24	21	45	49
	129	PG Dip. in Statistics*	1	95	111	132	110*	36	36
	807	PG Dip in Computing (Conv) with Adv Interdisciplinary Outlook	2				5	3	DNR** (LMA Courses – no longer running)
	805	PG Dip in Computing with Advanced Interdisciplinary	2				8	4	DNR** (LMA Courses – no longer running)

		Outlook							running)
Engineering	542	M.Sc. in Bioengineering	1		13	14	13	15	20
	543	M.Sc. in Bioengineering	2	9	3	5	2	2	1
	524	M.Sc. in Civil Engineering	1	24	12	8	18	22	NLU*
	525	M.Sc. in Civil Engineering	2		11	11		1	1
	872	M.Sc. Engineering (Environmental)	1						12
	873	M.Sc. Engineering (Environmental)	2						1
	874	M.Sc. Engineering (Transportation)	1						2
	876	M.Sc. Engineering (Structural and Geotechnical)	1						11
	733	M.Sc. in Mechanical Engineering (ERASMUS MUNDUS)	2	4	4	10	3	NLU*	NLU*
	657	M.Sc. in Integrated System Design	2	DNR	DNR	DNR	DNR	DNR**	DNR**
	257	M.Phil. Music & Media Technologies	1	16	18	13	12	22	12
	706	PG Dip. in Applied Building Repair & Conservation	1	11	16	12	14	12	14
	614	PG Dip. in Construction Law & Contract Admin	1	23	26	25	26	26	25
	201	PG Dip. in Environmental Engineering	1	23	34	28	24	28	23
	637	PG Dip. in Fire Safety Practice	1	14	29	23	21	12	9
	705	PG Dip. in Health and Safety Construction	1		21	11	10	8	8
	186	PG Dip. in Highway and Geotechnical Engineering	1			16	7	12	DNR** (Course now discontinued)
	260	PG Dip. in Music & Media Technologies	2	19	19	19	13	17	260
	n/a	PG Dip. in Physical Planning	1	DNR	DNR	DNR	DNR	DNR**	DNR**
136	PG Dip. in Project Management	1	71	85	85	65	61	26	
Mathematics	626	M.Sc. in High Performance Computing	1	7	6	8	7	10	6
Natural Sciences	748	M.Sc. in Biodiversity and Conservation	1	14	15	16	16	16	15
	803	M.Sc. in Environment &	1			14	14	15	10

		Development							
	827	M.Sc. in Development Practice	2					23	45
	169	M.Sc. in Environmental Sciences	1	19	17	12	15		16

Chemistry	753	M.Sc. In Chemical & Biological Techniques	2				DNR	DNR**	DNR** (Course now discontinued)
	923	PG Dip. In Chemical & Biological Techniques	3				DNR	DNR**	DNR** (Course now discontinued)

FACULTY OF HEALTH SCIENCES

School	Code	Course Title	Duration	2006/07	2007/08	2008/09	2009/10	2010/11	2011/12
Medicine	782	M.Sc. In Cardiovascular Rehabilitation & Prevention	1				1	1	
	783	M.Sc. In Cardiovascular Rehabilitation & Prevention	2				3	2	5
	736	M.Sc. in Clinical Chemistry	2	6	7	5	1	10	13
	223	M.Sc. in Cardiology	3		8	No intake	DNR	DNR**	DNR**
	224	M.Sc. in Child & Adolescent Analytic Psychotherapy	3	No intake	No intake	DNR	No intake	NLU*	NLU*
	799	M.Sc. in Exercise Physiology	1	6	5	5	9	7	2
	731	M.Sc. in Global Health	1	19	22	14	20	14	15
	797		2						4
	254	M.Sc. Health Services Management	2	22	26	21	15	30	21
	713	M.Sc. in Medical Imaging	1			4	11	15	13
	557	M.Sc. In Molecular Pathology	2	27	31	23	16	16	DNR**
	532	M.Sc. in Molecular Medicine	1	17	13	18	22	21	20
	533		2					2	4
	725	PG Dip. In Molecular Medicine	2					1	1
	798	M.Sc. in Biomedical Sciences (Intercalated)	1					6	15
	801	M.Sc. Cardiology	2					8	8
	746	M.Sc. in Neuroscience	1	11	19	16	21	13	16
	800		2						1
	618	M.Sc. in Occupational Therapy	2	3	No intake	5	No intake	5	4
	708	M.Sc. in Pharmaceutical Medicine	2	3	2	10	8	14	14
620	M.Sc. Psychoanalytic Psychotherapy	3	No intake	No intake	9	No intake	5	NLU*	
266	M.Sc. Psychoanalytic	1						23	

		Psychotherapy							
562	M.Sc. Physical Sciences in	1		10	11	10	9	11	
563	Medicine	2		2	1		EA***	EA***	
787	M.Sc. in Respiratory Physiotherapy	2				2	0	2	
208	M.Sc. in Sports Medicine	1	7	7	10	9	10	12	
756	PG Dip. in Cognitive Psychotherapy	1	11	12	9	10	15	19	
990	PG Dip. in Exercise Physiology	1	7	14	3		EA***	EA***	
126	PG Dip. in Gynaecology & Obstetrics	1	11	9	DNR	DNR	DNR**	DNR**	
707	PG Dip. in Pharmaceutical Medicine	2	4	3	4	3	5	3	
804	M.Sc. Healthcare Infection Management	2						4	

Nursing & Midwifery	802	M.Sc. in Cancer Care	2				13	14	8
	531	M.Sc. in Gerontological Nursing	2	8	10	7	17	31	25
	735	M.Sc. in Mental Health	2	31	26	41	34	41	29
	765		1					4	3
	539	M.Sc. in Midwifery	2	3	3	8	5	4	8
	537	M.Sc. In Nursing	2	16	15	16	11	20	18
	747	M.Sc. in Palliative Care	2		10	11	5	17	14
	656	PG Dip. in Clinical Health Sciences Education	1	2	3	7	2	4	2
	240	PG Dip. in Gerontological Nursing	1				DNR	EA***	EA***
	648	PG Dip. in Midwifery	2	54	41		44	EA***	EA***
	554	PG Dip. in Oncological Nursing	1			18		NLU*	NLU*
	665		2	12	15			NLU*	NLU*
	646	PG Dip. in Paediatric Nursing	2	8			DNR	NLU*	NLU*
	649	PG Dip. in Specialist Nursing	1	52	45	29	47	44	1
	536	M.Sc. Nursing	1					3	1
	880	M.Sc. in Dementia	2					9	21
	881		1						2
	688	M.Sc. Nursing (Child Health and Wellbeing)							4
	689	M.Sc. Nursing (Specialist Nursing)							38
766	Higher Diploma in Midwifery	1					45	45	

	755	Higher Diploma in Children's Nursing (R.C.N.)	1	14	14	11	13	15	12
Pharmacy	659	M.Sc. in Community Pharmacy	1		5		4	1	
	222	M.Sc. in Hospital Pharmacy	2			10	2	10	18
	544	M.Sc. in Pharmaceutical Analysis	1		6	7	8	11	7
	545		2	7	4		2	3	1
	726	M.Sc. in Pharmaceutical Manufacturing Technology	1	8	3	6	27	22	8
	546	M.Sc. in Pharmaceutical Technology	1			1	7	3	4
	635		2					DNR**	DNR**
	658	PG Dip. in Community Pharmacy	2	4	15	8	6	13	12
202	PG Dip. in Pharmaceutical Manufacturing Technology	2				2	20	25	
Dental Science	622	Master in Dental Surgery	3	5	9			NLU*	NLU*
	621	PG Dip. in Clinical Dentistry	3			21		19	18
	939	PG Dip. In Clinical Dental Technology							8
	963	PG Dip. In Special Care Dentistry							6
	773	PG Dip. In Conscious Sedation (Jn) (p/t)	2					8	DNR** (18 month intake)
	774	PG Dip. In Conscious Sedation	2		6			DNR**	8

NLU* = Course code No Longer in Use

DNR** = Did Not Run

EA*** = Exit Award

Appendix 2. Results of approved Research and Professional Degree Examinations (by degree) for the past five years (covering the period from October 2010 to the end of September 2011)

2010-2011

Degree	Total approved examinations	Degree awarded as it stands	Minor corrections required	Referred for major revisions	Lower degree awarded	Failed
Ph.D.	300	42	223	32	3	0
M.Sc.	39	5	28	6	0	0
M.Litt.	21	3	14	4	0	0
M.D.	21	3	16	2	0	0
D.Dent.Ch.	9	1	6	2	0	0
M.Ch.	2	0	1	1	0	0
M.A.I.	1	0	1	0	0	0
D.Ed.	2	0	2	0	0	0
Total	395	54	291	47	3	0

2009-2010

Degree	Total approved examinations	Degree awarded as it stands	Minor corrections required	Referred for major revisions	Lower degree awarded (from a major revision)	Failed
Ph.D.	260	43	217	23	0	0
M.Sc.	32	3	28	0	0	1
M.Litt.	21	2	17	0	1	1
M.D.	14	2	12	1	0	0
D.Dent.Ch.	5	0	5	1	0	0
M.Ch.	1	0	1	0	0	0
M.A.I.	1	0	0	0	0	1
D.Ed.	2	1	1	0	0	0
Total	336	51	281	25	1	3

*1 Ph.D.'s awarded Lower Degree, 1 x M.Litt.

2008-2009

Degree	Total approved examinations	Degree awarded as it stands	Minor corrections required	Referred for major revisions	Lower degree awarded (from a major revision)	Failed
Ph.D.	275	43	211	20	1*	0
M.Sc.	44	4	40	0	0	0
M.Litt.	17	7	9	1	0	0
M.D.	13	1	10	2	0	0
M.Dent.Ch.	6	1	5	0	0	0
M.Ch.	5	0	4	1	0	0
M.A.I.	2	0	2	0	0	0
Total	362	56	281	24	0	0

*1 Ph.D.'s awarded Lower Degree, 1 x M.Litt.

2007-2008

Degree	Total approved examinations	Degree awarded as it stands	Minor corrections required	Referred for major revisions	Lower degree awarded (from a major revision)	Failed
Ph.D.	261	25	218	16	2*	0
M.Sc.	62	3	58	2	0	0
M.Litt.	21	5	15	2	0	0
M.D.	7	1	6	0	0	0
M.Dent.Ch.	7	0	7	0	0	0
M.Ch.	2	0	2	0	0	0
M.A.I.	1	0	1	0	0	0
Total	361	33	307	20	2	0

*2 Ph.D.'s awarded Lower Degree, 1 x Mlitt / 1 x M.Sc.(following major revisions)

2006-2007

Degree	Total approved examinations	Degree awarded as it stands	Minor corrections required	Referred for major revisions	Lower degree awarded (from a major revision)	Failed
Ph.D.	237	37	183	18	1 M.Litt.	0
M.Sc.	49	12	35	2		0
M.Litt.	25	3	17	4		0
M.D.	11	4	7	0		0
M.Dent.Ch.	4	0	4	0		0
M.Ch.	4	0	4	0		0
Total	330	56	250	24		0

Appendix 3. Number of research degrees awarded by Faculty Grouping and degree in 2010/11 (includes September 2011)

Faculty	Ph.D.			M.Sc.			M.Litt.			M.D.			M.Dent.Ch.			M.Ch.			M.A.I.			D.Ed.	
	08/09	09/10	10/11	08/09	09/10	10/11	08/09	09/10	10/11	08/09	09/10	10/11	08/09	09/10	10/11	08/09	09/10	10/11	08/09	09/10	10/11	09/10	10/11
Arts, Humanities and Social Sciences	95	88	101	2	2	3	17	21	14	0	0	0	0	0	0	0	0	0	0	0	0	2	2
Engineering, Mathematics and Science	121	121	152	28	20	22	0	0	0	0	0	0	0	0	0	0	0	0	2	1	1	0	0
Health Sciences	38	51	47	14	10	14	0	0	0	11	14	21	6	5	9	4	1	2	0	0		0	0
TOTAL	254	260	300	44	32	39	17	21	14	11	14	21	6	5	9	4	1	2	2	1	1	2	2

*2 lower degree awards - (M.Sc.)

Appendix 4. Nationality of students in 2009/10 and 2010/11

Continent	Country	2009/10	2010/11	Difference	Sub-Totals in 0910	Sub-Totals in 1011	Overall change in 1011
Africa	Algeria	0	1	1			
	Burundi	1	0	-1			
	Cameroon	1	2	1			
	Congo, Democratic Republic	2	2	0			
	Egypt	7	6	-1			
	Ethopia	2	2	0			
	Ghana	2	2	0			
	Kenya	3	3	0			
	Libyan Arab Jamahiriya	6	8	2			
	Malawi	3	2	-1			
	Nigeria	35	36	1			
	Rwanda	2	0	-2			
	South Africa	13	12	-1			
	Sudan	9	8	-1			
	Tanzania	1	2	1			
	Uganda	3	5	2			
	Zambia	3	3	0			
	Zimbabwe	12	6	-6	105	100	-5
Asia	Afghanistan	0	1	1			
	Armenia	0	3	3			
	Bahrain	2	2	0			
	Bangladesh	5	4	-1			
	Brunei Darassalam	1	1	0			
	China	62	79	17			
	Hong Kong	2	4	2			
	India	65	68	3			
	Indonesia	1	1	0			
	Iran, Islamic Republic Of	7	11	4			
	Iraq	2	3	1			
	Israel	1	1	0			
	Japan	6	8	2			
	Jordan	8	8	0			
	Kuwait	2	3	1			
	Lebanon	1	2	1			
	Malaysia	14	12	-2			
Mongolia	1	2	1				

	Myanmar	0	1	1			
	Nepal	2	2	0			
	Oman	1	1	0			
	Pakistan	21	20	-1			
	Palestine	1	3	2			
	Philippines	7	3	-4			
	Rep. Of Korea	6	6	0			
	Saudi Arabia	0	6	6			
	Singapore	3	4	1			
	Sri Lanka	3	3	0			
	Syrian Arab Republic	2	2	0			
	Taiwan, Province Of China	2	1	-1			
	Thailand	1	2	1			
	United Arab Emirates	1	1	0			
	Viet Nam	4	4	0	234	272	38
Australasia	Australia	8	13	5			
	New Zealand	4	5	1	12	18	6
North & Central America	Canada	46	42	-4			
	Cuba	0	1	1			
	Guatemala	0	2	2			
	Jamaica	3	4	1			
	Mexico	6	5	-1			
	Trinidad & Tobago	2	2	0			
	United States Of America	195	226	31	252	282	30
South America	Argentina	0	2	2			
	Brazil	6	7	1			
	Chile	3	3	0			
	Colombia	2	2	0			
	Peru	1	1	0			
	Uruguay	0	1	1			
	Venezuela	1	0	-1	13	16	3
Europe (EU)	Austria	6	6	0			
	Belgium	7	5	-2			
	Bulgaria	3	6	3			
	Cyprus	1	1	0			
	Czech Republic	5	3	-2			
	Denmark	2	4	2			
	Estonia	4	4	0			
	Finland	4	6	2			
	France	46	40	-6			
	Germany	88	94	6			

	Great Britain	196	185	-11			
	Greece	27	27	0			
	Hungary	7	5	-2			
	Ireland	4015	3519	-496			
	Italy	82	86	4			
	Latvia	1	2	1			
	Lithuania	8	6	-2			
	Luxembourg	2	2	0			
	Malta	7	9	2			
	Poland	70	63	-7			
	Portugal	14	13	-1			
	Romania	11	15	4			
	Slovakia	4	6	2			
	Slovenia	3	1	-2			
	Spain	42	31	-11			
	Sweden	0	8	8			
	The Netherlands	16	18	2	4671	4165	-506
Europe (Non-EU)	Belarus	2	2	0			
	Bosnia And Herzogovina	0	1	1			
	Croatia	3	4	1			
	Kazakhstan	1	4	3			
	Norway	2	4	2			
	Russian Federation	19	18	-1			
	Serbia	1	2	1			
	Switzerland	4	7	3			
	Turkey	6	7	1			
	Ukraine	0	1	1	38	50	12
	TOTAL	5325	4903	-422	5325	4903	-422

*data has been extracted on basis of nationality rather than country / county code, to ensure the inclusion of international students who provide a home address based in Ireland.

Appendix 5. List of external examiners for research degrees by Faculty in 2010/11 listed alphabetically by School

Faculty of Arts and Humanities			
Name	Degree	School	Academic Address
Prof. G. Fitzgerald	Ph.D.	Business	Information Systems and Computing, Brunel University, U.K.
Dr. T. Turner	M.Litt	Business	School of Business, University of Limerick
Dr. M. Doherty	M.Litt	Business	School of Law and Business, Dublin City University
Ms. B. Waine	Ph.D.	Business	School of Social Sciences, University of Birmingham, U.K.
Prof. B. Leavy	Ph.D.	Business	Dublin City University Business School, Dublin
Prof. A. Mullineux	Ph.D.	Business	Birmingham Business School, University of Birmingham, U.K.
Prof. D. Mangan	Ph.D.	Business	School of Marine Sciences, Logistics and Technology, University of Newcastle, U.K.
Prof. I. Garrett	Ph.D.	Business	Manchester Business School, U.K.
Prof. A. Kakabadse	Ph.D.	Business	Cranfield School of Management, Cranfield University, Milton Keynes, U.K.
Prof. M. Nind	Ph.D.	Clinical Speech and Language Studies	School of Education, University of Southampton, U.K.
Prof. M. Torres-Reyes	Ph.D.	Drama, Film and Music	Dept of English, Ateneo de Manila University, Philippines
Dr. E. Lyon	Ph.D.	Drama, Film and Music	Sonic Arts Research Centre, Queen's University Belfast, Northern Ireland, U.K.
Dr. A. Howard	M.Litt.	Drama, Film and Music	School of Music, University of East Anglia, Norwich, U.K.
Dr. A. Cascelli	M.Litt.	Drama, Film and Music	Dept of Music, N.U.I. Maynooth, Co. Kildare
Dr. R. Gilmore	Ph.D.	Drama, Film and Music	School of Arts, Brunel University, Middlesex, U.K.
Dr. G. Mulvey	Ph.D.	Drama, Film and Music	D.I.T., Dublin
Prof. B. Wood	Ph.D.	Drama, Film and Music	School of Music, Bangor University, Wales, U.K.

Dr. P. Everett	Ph.D.	Drama, Film and Music	School of Music, University College, Cork
Prof. Dr. C. Balme	Ph.D.	Drama, Film and Music	Theaterwissenschaft Munchen, Ludwigmaximilians-Universität, Germany
Prof. C. Morash	Ph.D.	Drama, Film and Music	School of English, Media and Theatre Studies, N.U.I. Maynooth, Co. Kildare
Dr. A. Monks	Ph.D.	Drama, Film and Music	Dept of English and Humanities, University of London, U.K.
Prof. S. Rings	Ph.D.	Drama, Film and Music	Dept of Music, University of Chicago, U.S.A.
Prof. B. Kershaw	Ph.D.	Drama, Film and Music	Devon, U.K.
Dr. J. Godfrey	Ph.D.	Drama, Film and Music	School of Music, U.C.C.
Dr. H. Rogers	M.Litt.	Drama, Film and Music	School of Music, University of Liverpool, U.K.
Prof. C. Leeney	Ph.D.	Drama, Film and Music	School of English, Drama and Film, U.C.D.
Prof. J. Cowan	Ph.D.	Education	Edinburgh Napier University, Scotland, U.K.
Dr. A. Mulkeen	M.Litt.	Education	Education Department, N.U.I. Maynooth, Co. Kildare
Dr. M. Boland	M.Litt.	Education	Dr. M. Boland, Dept of Spanish, N.U.I. Galway
Dr. J. Gleeson	D.Ed.	Education	Dept of Education and Professional Studies, University of Limerick
Prof. D. Smith	D.Ed.	Education	Royal College of Surgeons in Ireland, Dublin
Dr. R. Fisher	Ph.D.	Education	Graduate School of Engineering, University of Exeter, Devon, U.K.
Prof. G. Wells	Ph.D.	Education	Dept of Education, University of California, U.S.A.
Dr. G. Scanlon	M.Litt.	Education	School of Educational Studies, D.C.U.
Prof. J. Winston	Ph.D.	Education	Institute of Education, University of Warwick, Coventry, U.K.
Dr. L. Harte	Ph.D.	English	School of Arts, Histories and Cultures, University of Manchester, U.K.
Dr. A. Mandal	Ph.D.	English	School of English, Communication and Philosophy, Cardiff University, Wales, U.K.
Prof. P. Hunt	Ph.D.	English	Professor Emeritus in Children's Literature, Cardiff University, Wales, U.K.

Prof. P. Waugh	Ph.D.	English	Dept of English Studies, University of Durham, U.K.
Prof. N. Vance	Ph.D.	English	University of Sussex, U.K.
Dr. M. Kelleher	M.Litt.	English	An Foras Feasa, N.U.I. Maynooth, Co. Kildare
Dr. K. O'Connor	Ph.D.	Histories and Humanities	Dept of Archaeology, N.U.I. Galway
Prof. R. Chapman Stacey	Ph.D.	Histories and Humanities	Dept of History, University of Washington, U.S.A.
Dr. R. Hughes	Ph.D.	Histories and Humanities	Dept of International Politics, University of Aberystwyth, Wales, U.K.
Prof. D. Ferriter	Ph.D.	Histories and Humanities	School of Histories and Archives, U.C.D.
Prof. I. Haynes	Ph.D.	Histories and Humanities	School of Historical Studies, Newcastle University, U.K.
Prof. C. Whately	Ph.D.	Histories and Humanities	School of Humanities, University of Dundee, Scotland, U.K.
Dr. Y. Hamialikis	Ph.D.	Histories and Humanities	School of Humanities, University of Southampton, U.K.
Dr. C. Adams	M.Litt.	Histories and Humanities	School of Archaeology, Classics and Egyptology, University of Liverpool, U.K.
Dr. M. Coleman	M.Litt.	Histories and Humanities	School of History and Anthropology, Queen's University Belfast, Northern Ireland, U.K.
Prof. S. Jenkins	M.Litt.	Histories and Humanities	English Heritage, London, U.K.
Prof. H. Clarke	Ph.D.	Histories and Humanities	Medieval and Socio-economic History, U.C.D.
Dr. L. Stevenson	M.Litt.	Histories and Humanities	Art, Design & Media, Thames Valley University, London, U.K.
Dr. E. O'Connor	Ph.D.	Histories and Humanities	Faculty of Arts, University of Ulster, Coleraine, Northern Ireland, U.K.
Dr. L. Geary	Ph.D.	Histories and Humanities	Dept of History, University College Cork
Dr. E. Fitzpatrick	Ph.D.	Histories and Humanities	Dept of Archaeology, N.U.I. Galway
Dr. N. Figgis	Ph.D.	Histories and Humanities	School of Art History, U.C.D.
Dr. G. Murphy	Ph.D.	Histories and Humanities	School of Law and Government, D.C.U.
Prof. J. France	Ph.D.	Histories and Humanities	Dept of Histories and Classics, University of Wales, Swansea, Wales, U.K.
Prof. B. Mercer Walker	Ph.D.	Histories and Humanities	Centre for Irish Politics, Queen's University Belfast, Northern Ireland,

			U.K.
Prof. Y. Hamilakis	Ph.D.	Histories and Humanities	Dept of Archaeology, University of Southampton, U.K.
Prof. M. Crinson	Ph.D.	Histories and Humanities	School of Arts, Histories and Cultures, University of Manchester, U.K.
Prof. K. O'Connor	Ph.D.	Histories and Humanities	Dept of Archaeology, N.U.I. Galway
Dr. T. Dooley	Ph.D.	Histories and Humanities	Dept of History, N.U.I. Maynooth, Co. Kildare
Dr. J. Coulston	Ph.D.	Histories and Humanities	School of Classics, University of St. Andrew's, Fife, Scotland, U.K.
Dr. T. Barnard	Ph.D.	Histories and Humanities	Hertford College, Oxford, U.K.
Dr. A. Murray	Ph.D.	Histories and Humanities	School of History, University of Leeds, U.K.
Dr. B. Heal	M.Litt.	Histories and Humanities	School of History, University of St. Andrew's, Fife, Scotland, U.K.
Prof. J. Andrews	Ph.D.	Languages, Literatures and Cultural Studies	School of Humanities, Keele University, U.K.
Prof. R. Taylor	Ph.D.	Languages, Literatures and Cultural Studies	Dept of Politics, Swansea University, Wales, U.K.
Prof. Dr. H Peitsch	Ph.D.	Languages, Literatures and Cultural Studies	Institut fur Germanistik, Universitat Potsdam, Germany
Dr. N. O'Muraile	Ph.D.	Languages, Literatures and Cultural Studies	School of Irish, National University of Ireland Galway
Prof. E. Hughes	Ph.D.	Languages, Literatures and Cultural Studies	Dept of French, Queen Mary University of London, U.K.
Dr. D. Pinfold	Ph.D.	Languages, Literatures and Cultural Studies	School of Modern Languages, University of Bristol, U.K.
Prof. T. Docherty	Ph.D.	Languages, Literatures and Cultural Studies	Dept of English and Comparative Literary Studies, University of Warwick, Coventry, U.K.
Dr. D. Berghahn	Ph.D.	Languages, Literatures and Cultural Studies	Dept of Media Arts, Royal Holloway, University of London, U.K.
Prof. B. Havel	Ph.D.	Law	DePaul University College of Law, Chicago, U.S.A.
Prof. A. Berkeley	Ph.D.	Law	K & L Gates, London, U.K.

Dean G. Mosier	Ph.D.	Law	College of Business Administration, University of Nevada, U.S.A.
Dr. G. Verdirame	Ph.D.	Law	Lauterpracht Centre for International Law, Cambridge, U.K.
Prof. D. Morgan	Ph.D.	Law	Dept of Law, University College, Cork
Dr. R. O'Connell	Ph.D.	Law	Law School, Queen's University Belfast, Northern Ireland, U.K.
Prof. R. Whish	Ph.D.	Law	School of Law, King's College London, U.K.
Prof. M. Cremona	Ph.D.	Law	Institute Badia Fiesolana, European University, San Domenico di Fiesede, Italy
Dr. D. Whelan	Ph.D.	Law	Law School, University College Cork
Dr. D. O'Connell	Ph.D.	Law	School of Law, N.U.I. Galway
Prof. A. Van Der Walt	Ph.D.	Law	Law Faculty, Stellenbosch University, South Africa
Prof. S. Hedley	Ph.D.	Law	Law School, University College Cork
Dr. P. Van Avermaet	Ph.D.	Linguistics, Speech and Communication Sciences	Centre for Diversity and Learning, Ghent University, Belgium
Dr. L. Roberts	Ph.D.	Linguistics, Speech and Communication Sciences	Max Planck Institute for Psycholinguistics, Nijmegen, The Netherlands
Prof. C. Munoz	Ph.D.	Linguistics, Speech and Communication Sciences	Dept of English Linguistics and Applied Linguistics, University of Barcelona, Spain
Prof. C. Leung	Ph.D.	Linguistics, Speech and Communication Sciences	Dept of Education and Professional Studies, King's College London, U.K.
Prof. J. Harris	Ph.D.	Linguistics, Speech and Communication Sciences	Dept of Linguistics, University College London, U.K.
Prof. M. Leonetti	Ph.D.	Linguistics, Speech and Communication Sciences	Departamento de Filosofía y Letras, Universidad de Alcalá de Henares, Spain
Prof. B. Köpke	Ph.D.	Linguistics, Speech and Communication Sciences	Institut des Sciences du Cerveau de Toulouse, Université de Toulouse, France
Prof. R. Usón	Ph.D.	Linguistics, Speech and	Facultad de Filología, Universidad Nacional de Educación a Distancia,

		Communication Sciences	Madrid, Spain
Dr. A. Van Der Gaag	Ph.D.	Linguistics, Speech and Communication Sciences	Sussex, U.K.
Dr. R. Goodfellow	Ph.D.	Linguistics, Speech and Communication Sciences	Institute of Educational Technology, The Open University, Milton Keynes, U.K.
Prof. M. Baynham	Ph.D.	Linguistics, Speech and Communication Sciences	School of Education, University of Leeds, U.K.
Prof. K. Figlio	Ph.D.	Psychology	Centre for Psychoanalytical Studies, University of Essex, Colchester, U.K.
Prof. V. Walsh	Ph.D.	Psychology	Institute of Cognitive Neuroscience, University College London, U.K.
Prof. D. Harris	Ph.D.	Psychology	Dept of Systems Engineering and Human Factors, School of Engineering, Cranfield University, Bedford, U.K.
Prof. L. Nyberg	Ph.D.	Psychology	Radiation Sciences and Intergrative Medical Biology, Umea University, Sweden
Prof. R. Jordan	Ph.D.	Psychology	Autism Centre for Education and Research, School of Education, University of Birmingham
Prof. A. Carr	Ph.D.	Psychology	School of Psychology, University College Dublin
Prof. C. Davis	Ph.D.	Psychology	Dept of Kinesiology and Health Sciences, York University, Ontario, Canada
Dr. G. Kiernan	M.Sc.	Psychology	School of Nursing, Dublin City University
Prof. J. Hietanan	Ph.D.	Psychology	Dept of Psychology, University of Tampere, Finland
Prof. M. Woodhead	Ph.D.	Psychology	Faculty of Education & Language Studies, Open University, Milton Keynes, U.K.
Prof. R. Morris	Ph.D.	Psychology	Institute of Psychiatry, King's College London, U.K.
Dr. J. Intriligator	Ph.D.	Psychology	School of Psychology, Bangor University, Wales, U.K.
Prof. P. Howlin	Ph.D.	Psychology	Institute of Psychiatry, King's College London, U.K.

Prof. Dr D. de Gelder	Ph.D.	Psychology	Tilburg University, The Netherlands
Dr. A. Jeffers	Ph.D.	Religions, Theology and Ecumenics	The Martin Harris Centre for Music and Drama, University of Manchester, U.K.
Prof. M. Barnes	Ph.D.	Religions, Theology and Ecumenics	Heythrop College, University of London, U.K.
Revd. Dr. J. Morris	M.Litt.	Religions, Theology and Ecumenics	Trinity Hall, University of Cambridge, U.K.
Prof. T. Woodhouse	Ph.D.	Religions, Theology and Ecumenics	Centre for Conflict Resolution, University of Bradford, West Yorkshire, U.K.
Ms. E. Rooney	Ph.D.	Religions, Theology and Ecumenics	School of Sociology and Applied Social Sciences, University of Ulster, Co. Antrim, Northern Ireland, U.K.
Prof. H. Pyper	Ph.D.	Religions, Theology and Ecumenics	Dept of Biblical Studies, University of Sheffield, U.K.
Dr. C. Hempel	Ph.D.	Religions, Theology and Ecumenics	School of Philosophy, Theology and Religion, University of Birmingham, U.K.
Dr. S. Vaughan	Ph.D.	Religions, Theology and Ecumenics	School of Social & Political Science, University of Edinburgh, Scotland, U.K.
Prof. T. Rajak	Ph.D.	Religions, Theology and Ecumenics	London, U.K.
Prof. L. Stanley	Ph.D.	Social Sciences and Philosophy	Centre for Narrative and Auto/Biographical Studies, University of Edinburgh, Scotland, U.K.
Prof. C. Ó'Gráda	Ph.D.	Social Sciences and Philosophy	School of Economics, U.C.D.
Dr. L. Martens	Ph.D.	Social Sciences and Philosophy	Research Institute for Life Course Studies, Keele University, Staffordshire, U.K.
Prof. C. Weiss	Ph.D.	Social Sciences and Philosophy	Dept of Economics, Vienna University of Economics and Business, Austria
Prof. M. Goddard	Ph.D.	Social Sciences and Philosophy	Centre for Health Economics, University of York, U.K.
Prof. P. Thompson	Ph.D.	Social Sciences and Philosophy	Dept of Human Resource Management, University of Strathclyde Business School, Scotland, U.K.

Prof. V. Ginsburgh	Ph.D.	Social Sciences and Philosophy	Université Libre de Bruxelles, Belgium
Prof. F. Warnock	Ph.D.	Social Sciences and Philosophy	Darden Business School, University of Virginia, U.S.A.
Prof. Dr. D. Hosking	Ph.D.	Social Sciences and Philosophy	Utrecht School of Governance, Universiteit Utrecht, The Netherlands
Prof. S. Banducci	Ph.D.	Social Sciences and Philosophy	Dept of Politics, University of Exeter, Devon, U.K.
Prof. M. Franklin	Ph.D.	Social Sciences and Philosophy	European University Institute, San Dominico di Fiesoli, Italy
Prof. M. Hoffmann	Ph.D.	Social Sciences and Philosophy	Institut für Empirische Wirtschaftsforschung, Universität Zürich, Switzerland
Prof. B. Fetherstone	Ph.D.	Social Sciences and Philosophy	School of Political Science and Sociology, National University of Ireland Galway
Prof. D. Farrell	Ph.D.	Social Sciences and Philosophy	School of Politics & International Relations, U.C.D.
Prof. J. Cotter	M.Litt.	Social Sciences and Philosophy	School of Business, U.C.D.
Prof. D. Fitzgerald	Ph.D.	Social Sciences and Philosophy	Economics Department, Princeton University, New Jersey, U.S.A.
Prof. J. Eade	Ph.D.	Social Sciences and Philosophy	Centre for Research on Nationalism, Ethnicity and Multiculturalism, Roehampton University, London, U.K.
Dr. V. Ateca-Amestoy	M.Litt.	Social Sciences and Philosophy	University of the Basque Country, Bilbao, Spain
Dr. C. McCullagh	Ph.D.	Social Sciences and Philosophy	Dept of Sociology, University College Cork
Dr. H. Codd	Ph.D.	Social Work and Social Policy	Lancashire Law School, University of Central Lancashire, Preston, U.K.
Prof. L. Trinder	Ph.D.	Social Work and Social Policy	School of Law, University of Exeter, Devon, U.K.
Prof. R. MacDonald	Ph.D.	Social Work and Social Policy	School of Social Sciences and Law, Teesside University, U.K.
Dr. K. McElrath	Ph.D.	Social Work and Social Policy	School of Sociology, Social Policy and Social Work, Queen's University Belfast, Northern Ireland, U.K.
Prof. R. Fevre	Ph.D.	Social Work and Social Policy	School of Social Sciences, Cardiff University, Wales, U.K.
Dr. M. Satka	Ph.D.	Social Work and Social Policy	Dept of Social Sciences and Philosophy, University of Jyväskylä ,

			Finland
Prof. F. McNeill	Ph.D.	Social Work and Social Policy	Scottish Centre for Criminal Justice Research, University of Glasgow, Scotland, U.K.
Prof. E. O'Shea	Ph.D.	Social Work and Social Policy	Dept of Economics, University College Galway
Faculty of Health Sciences			
Name	Degree	School	Academic Address
Prof. C. Catlow	Ph.D.	Chemistry	MAPS Faculty Office, University College London, U.K.
Prof. A. Walmsley	Ph.D.	Dental Science	School of Dentistry, University of Birmingham, U.K.
Prof. M. Manogue	Ph.D.	Dental Science	Leeds Dental Institute, U.K.
Prof. M. Kinirons	D.Ch.Dent.	Dental Science	Dept of Paediatric Dentistry, University College Cork
Prof. M. Sanz	D.Ch.Dent.	Dental Science	Faculty of Odontology, University of Complutense of Madrid, Spain
Prof. P. Walsh	D.Ch.Dent.	Dental Science	Dept of Disability Studies, U.C.D.
Dr. M. Lowery	D.Ch.Dent.	Dental Science	School of Electrical, Electronic and Mechanical Engineering, U.C.D.
Prof. G. Ogden	D.Ch.Dent.	Dental Science	Dept of Oral Surgery and Medicine, University of Dundee, Scotland, U.K.
Prof. M. Hennequin	Ph.D.	Dental Science	Dental Faculty, University of Auvergne, Clermont Ferrand, France
Prof. M. Richardson	Sc.D.	Dental Science	Regional Mycology Laboratory, Wythenshawe Hospital, Manchester, U.K.
Prof. Dr med. R. Kappe	Sc.D.	Dental Science	University of Heidelberg, Germany
Dr. P. Cooper	Ph.D.	Dental Science	School of Dentistry, University of Birmingham, U.K.
Prof. E Kay	M.D.	Medicine	Dept of Histopathology, Beaumont Hospital, Dublin
Prof. H Humphreys	M.D.	Medicine	Dept of Clinical Microbiology, Beaumont Hospital, Dublin
Dr. M. Raab	M.D.	Medicine	Dept of Haematology-Oncology, University of Heidelberg, Germany
Dr. K. Sweeney	M.D.	Medicine	Dept of Surgery, University Hospital, Galway

Dr. M. Mitrakou	Ph.D.	Medicine	Dept of Clinical Therapeutics, University of Athens, Greece
Dr. D. O'Gorman	Ph.D.	Medicine	Dept of Health and Human Performance, D.C.U.
Prof. F. Dela	Ph.D.	Medicine	Centre for Healthy Ageing, University of Copenhagen, Denmark
Prof. C. Meijer	Ph.D.	Medicine	Dept of Pathology, Vrije Universiteit Medical Centre, Amsterdam, The Netherlands
Prof. E. O'Shea	Ph.D.	Medicine	Dept of Farmacologia, Universidad Complutense de Madrid, Spain
Prof. M. Eklund	M.Sc.	Medicine	School of Occupational Therapy, Lund University, Sweden
Dr. M. Van Den Akker	M.Sc.	Medicine	Dept of General Practice, Maastricht University, The Netherlands
Dr. A. Gilliland	M.Sc.	Medicine	Dept of General Practice, Queen's University Belfast, Northern Ireland, U.K.
Prof. M. Turner	M.D.	Medicine	Dept of Obstetrics and Gynaecology, U.C.D.
Dr. R. McLoughlin	M.D.	Medicine	Dept of Gastroenterology, University College Hospital, Co. Galway
Dr. S. Goss	Ph.D.	Medicine	Linlithgow, West Lothian, Scotland, U.K.
Prof. R. Banos	Ph.D.	Medicine	Facultad de Psicologia, Valencia, Spain
Dr. B. O'Donnabhain	M.Sc.	Medicine	Dept of Archaeology, University College Cork
Dr. E. Murphy	M.Sc.	Medicine	School of Geography, Archaeology and Pharmacology, Queen's University Belfast, Northern Ireland, U.K.
Prof. A Passmore	M.D.	Medicine	School of Medicine and Dentistry, Queen's University Belfast
Prof. D. Wood	Ph.D.	Medicine	National Heart and Lung Institute, Imperial College London, U.K.
Dr. S. O'Sullivan	Ph.D.	Medicine	School of Graduate Entry Medicine and Health, University of Nottingham, U.K.
Prof. S. Fanning	M.Sc.	Medicine	School of Agriculture, Food Science and Veterinary Medicine, U.C.D.
Prof. E. Lartigau	Ph.D.	Medicine	Dept of Radiation Oncology, Centre Oscar Lambret, Lille, France

Prof. G. Kinghorn	M.D.	Medicine	Dept of GU Medicine, Sheffield Teaching Hospital, U.K.
Dr. P. Lenting	Ph.D.	Medicine	Director of Research at INSERM, Le Kremlin-Bicetre, France
Prof. W. Wieling	Ph.D.	Medicine	Academic Medical Centre, University of Amsterdam, The Netherlands
Dr. Y. Rochev	Ph.D.	Medicine	National Centre for Biomedical Engineering Science, N.U.I. Galway
Dr. M. Benoit	Ph.D.	Medicine	Dept of Physics and Center for Nano Sciences, LMU Munich, Germany
Prof. J. Bannigan	M.Sc.	Medicine	School of Medicine and Medical Sciences, U.C.D.
Dr. T. Crotty	M.D.	Medicine	Dept of Pathology, St. Vincent's University Hospital, Dublin
Prof. D. Healy	M.D.	Medicine	Dept of Neurology, Beaumont Hospital, Dublin
Dr M. Edwards	M.D.	Medicine	London Institute of Neurology, U.K.
Prof. H. McNulty	M.D.	Medicine	School of Biomedical Sciences, University of Ulster, Coleraine, Northern Ireland, U.K.
Prof. M. Cleary	Ph.D.	Medicine	The Hormel Institute, University of Minnesota, U.S.A
Dr. N. Bray	Ph.D.	Medicine	Dept of Neuroscience, King's College London, U.K.
Dr. G. Gaffney	Ph.D.	Medicine	Dept of Obstetrics and Gynaecology, N.U.I. Galway
Prof. B. Wijnhoven	Ph.D.	Medicine	Dept of Surgery, Erasmus University Medical Centre, Rotterdam, The Netherlands
Dr. A. Kiltie	Ph.D.	Medicine	Gray Institute for Radiation Oncology and Biology, Oxford University, U.K.
Prof. C. Wainwright	Ph.D.	Medicine	Institute of Health & Welfare Research, Robert Gordon University, Aberdeen, Scotland, U.K.
Prof. J. Perk	M.D.	Medicine	Dept of Health Sciences, Linnaeus University, Kalmar, Sweden
Prof. D. Zips	M.D.	Medicine	University of Dresden, Germany
Dr. J. Eustace	M.D.	Medicine	Dept of Renal Medicine, Cork University Hospital
Prof. D. Balschun	Ph.D.	Medicine	Dept of Psychology, K.U. Leuven, Belgium

Prof. K. Prise	M.D.	Medicine	Centre for Cancer Research and Cell Biology, Queen's University Belfast, Northern Ireland, U.K.
Dr. A. Sullivan	Ph.D.	Medicine	Dept of Anatomy, University College Cork
Dr. C. Gissane	M.Sc.	Medicine	Directorate of Sports Rehab, St. Mary's University College, Middlesex, U.K.
Mr. M. Kell	M.D.	Medicine	School of Medicine and Medical Science, Breastcheck, Dublin
Prof. S. Brackert	Ph.D.	Medicine	School of Biomolecular and Biomedical Sciences, U.C.D.
Prof. G. Callagy	Ph.D.	Medicine	Dept of Pathology, N.U.I. Galway
Prof. R. Goering	Ph.D.	Medicine	Dept of Medical Microbiology and Immunology, Creighton University Medical Centre, Nebraska, U.S.A.
Dr. H. Lambkin	Ph.D.	Medicine	School of Biological Sciences, D.I.T.
Mr N. Renny	M.Sc.	Medicine	Aberdeen Royal Infirmary, Scotland, U.K.
Prof. J. O'Byrne	M.Ch.	Medicine	Mater Private Hospital, Dublin
Prof. D. Ferry	M.D.	Medicine	Dept of Oncology, New Cross Hospital, Wolverhampton, U.K.
Dr. P. Boers	M.D.	Medicine	Mid-Western Regional Hospital, Dooradoyle, Co. Limerick
Dr. P. Collins	M.D.	Medicine	Dept of Haematology, Cardiff University, Wales, U.K.
Prof. Dr. M. Groenen	Ph.D.	Medicine	Animal Breeding and Genomics Centre, Wageningen University, The Netherlands
Dr. G. Frost	Ph.D.	Medicine	Dept of Medicine, Imperial College London, U.K.
Prof. P. Passmore	Ph.D.	Medicine	Dept of Ageing and Geriatric Medicine, Queen's University Belfast, Northern Ireland, U.K.
Dr. M. Joels	Ph.D.	Medicine	Swammerdam Institute for Life Sciences, University of Amsterdam, The Netherlands
Dr. J. Moroney	Ph.D.	Medicine	Dept of Neurology, Beaumont Hospital, Dublin
Prof. A. McGregor	Ph.D.	Medicine	Dept of Musculoskeletal Biodynamics, Biosurgery & Surgical Technology, Imperial College London, U.K.
Dr. C. Blake	Ph.D.	Medicine	School of Public Health, Physiotherapy and Population Science, U.C.D.

Prof. K. Pesudovs	M.D.	Medicine	Dept of Optometry and Vision Science, Flinders University and Flinders Medical Centre, Australia
Prof. A. Passmore	M.D.	Medicine	Dept of Geriatric Medicine, Queen's University Belfast, Northern Ireland, U.K.
Prof. G. O'Sullivan	Ph.D.	Medicine	Cork Cancer Research Centre, U.C.C.
Prof. A. Vezzani	Ph.D.	Medicine	Dept of Neuroscience, Mario Negri Institute for Pharmacological Research, Milan, Italy
Prof. R. Sutton	Ph.D.	Medicine	Clinical Cardiology, Imperial College London, U.K.
Prof. W. Hall	Ph.D.	Medicine	School of Medicine and Medical Sciences, U.C.D.
Prof. J. Moore	Ph.D.	Medicine	Dept of Bacteriology, Belfast City Hospital, Northern Ireland, U.K.
Prof. V. Howells	Ph.D.	Medicine	School of Health Sciences, Eastern Michigan University, U.S.A.
Prof. A. Kirby	Ph.D.	Medicine	Dyscovery Centre, Newport, U.K.
Dr. J. Ziviani	Ph.D.	Medicine	School of Health and Rehabilitation Sciences, University of Queensland, Brisbane, Australia
Dr. R. Humphrey	Ph.D.	Medicine	Division of Occupational Science, University of North Carolina at Chapel Hill, U.S.A.
Prof. D. Croke	Ph.D.	Medicine	Dept of Molecular and Cellular Therapeutics, R.C.S.I. Dublin
Prof. C. Bradley	Ph.D.	Medicine	Dept of General Practice, U.C.C.
Prof. M. Johnson	Ph.D.	Nursing and Midwifery Studies	Faculty of Health and Life Sciences, De Montfort University, Leicester, U.K.
Prof. E. Savage	M.Sc.	Nursing and Midwifery Studies	School of Nursing and Midwifery, University College Cork
Prof. B. Green	Ph.D.	Nursing and Midwifery Studies	Professor Emeritus, Swansea University, Wales, U.K.
Dr. F. Shearer	Ph.D.	Nursing and Midwifery Studies	School of Mathematics & Physics, Queen's University Belfast, Northern Ireland, U.K.
Prof. J. Sandall	Ph.D.	Nursing and Midwifery Studies	School of Medicine, King's College London, U.K.
Dr. D. O'Mathuna	Ph.D.	Nursing and Midwifery Studies	School of Nursing, Dublin City University, Dublin 9
Prof. M. Jasper	Ph.D.	Nursing and Midwifery Studies	School of Health Sciences, Swansea University, Wales, U.K.

Prof. D. Bick	Ph.D.	Nursing and Midwifery Studies	School of Nursing and Midwifery, King's College London, U.K.
Dr. I. Lyunch	Ph.D.	Pharmacy and Pharmaceutical Sciences	Centre for Bionano Interactions, U.C.D.
Dr. J. Leza	Ph.D.	Pharmacy and Pharmaceutical Sciences	Dept of Pharmacology, Universidad Complutense Madrid, Spain
Dr. J. Baugh	Ph.D.	Pharmacy and Pharmaceutical Sciences	School of Medicine and Medical Sciences, U.C.D.
Prof. A. Maguire	Ph.D.	Pharmacy and Pharmaceutical Sciences	School of Pharmacy, University College, Cork
Dr. S. Keely	Ph.D.	Pharmacy and Pharmaceutical Sciences	Molecular Medicine Laboratory, Beaumont Hospital, Dublin
Prof. G. Davies	Ph.D.	Pharmacy and Pharmaceutical Sciences	Institute of Pharmaceutical Sciences, King's College London, U.K.
Dr. C. McCoy	Ph.D.	Pharmacy and Pharmaceutical Sciences	School of Pharmacy, Queen's University Belfast, Northern Ireland, U.K.
Dr. R. O'Connor	Ph.D.	Pharmacy and Pharmaceutical Sciences	School of Nursing, Dublin City University, Dublin 9
Dr. B. Forbes	Ph.D.	Pharmacy and Pharmaceutical Sciences	Pharmacy Department, King's College London, U.K.
Prof. K. Nolan	Ph.D.	Pharmacy and Pharmaceutical Sciences	Royal College of Surgeons in Ireland, Dublin
Prof. D. Jones	Ph.D.	Pharmacy and Pharmaceutical Sciences	School of Pharmacy, Queen's University Belfast, Northern Ireland, U.K.
Prof. M. Gutshow	Ph.D.	Pharmacy and Pharmaceutical Sciences	Pharmaceutical Chemistry I, University of Bonn Pharmaceutical Institute, Germany
Dr. U. Ni Ghogain	Ph.D.	Pharmacy and Pharmaceutical Sciences	Chemistry Department, Institute of Technology, Carlow

Faculty of Engineering, Mathematics and Science

Name	Degree	School	Academic Address
Dr. M. Worrall	Ph.D.	Biochemistry and Immunology	School of Biomolecular and Biomedical Science, U.C.D.

Dr. G. Biagini	Ph.D.	Biochemistry and Immunology	Liverpool School of Tropical Medicine, U.K.
Prof. Dr. V. Schijns	Ph.D.	Biochemistry and Immunology	Cell Biology & Immunology Group, Wageningen University, The Netherlands
Prof. B. Gran	Ph.D.	Biochemistry and Immunology	Division of Clinical Neurology, University of Nottingham, U.K.
Prof. C. Breslin	M.Sc.	Biochemistry and Immunology	Chemistry Department, N.U.I. Maynooth, Co. Kildare
Prof. S. Arthur	Ph.D.	Biochemistry and Immunology	MRC Protein Phosphorylation Unit, University of Dundee, Scotland, U.K.
Dr. K. Midwood	Ph.D.	Biochemistry and Immunology	Dept of Matrix Biology, Imperial College London, U.K.
Dr. L. Eriksson	Ph.D.	Biochemistry and Immunology	School of Chemistry, N.U.I. Galway
Dr. C. Bryant	Ph.D.	Biochemistry and Immunology	Dept of Veterinary Medicine, University of Cambridge, U.K.
Prof. P. Schloss	Ph.D.	Biochemistry and Immunology	Dept of Psychiatry & Psychotherapy, Central Institute of Mental Health, Mannheim, Germany
Prof. Dr. S. Klaus	Ph.D.	Biochemistry and Immunology	Deutsches Institut für ernährungsforschung, Nuthetal, Germany
Prof. J. Simpson	Ph.D.	Biochemistry and Immunology	School of Biology and Environmental Science, U.C.D.
Dr. S. Wong	Ph.D.	Biochemistry and Immunology	Institute of Medical Sciences, University of Aberdeen, Scotland, U.K.
Dr. E. Gnaiger	M.Sc.	Biochemistry and Immunology	Dept of Visceral, Transplant and Thoracic Surgery, Innsbruck Medical University, Austria
Prof. C. Palmeira	Ph.D.	Biochemistry and Immunology	MitoLab, Centre for Neurosciences and Cell Biology, University of Coimbra, Portugal
Prof. J. Gumperz	Ph.D.	Biochemistry and Immunology	School of Medicine and Public Health, University of Wisconsin, U.S.A.
Prof. J. Mazat	Ph.D.	Biochemistry and Immunology	Dept of Medical Biochemistry and Molecular Biology, Université Victor Segalen Bordeaux 2, France
Dr. A. Kis	Ph.D.	Chemistry	Laboratory of Nanoscale Electronics and Structures, Ecole Polytechnique Fédérale de Lausanne, Switzerland

Prof. C. Birkenshaw	Ph.D.	Chemistry	Dept of Materials Science and Technology, University of Limerick
Prof. C. Moody	Ph.D.	Chemistry	Dept of Chemistry, University of Nottingham, U.K.
Prof. L. Yellowlees	Ph.D.	Chemistry	School of Chemistry, University of Edinburgh, Scotland, U.K.
Dr. A. Smith	Ph.D.	Chemistry	School of Chemistry, University of St. Andrews, Scotland, U.K.
Prof. B. Widom	Ph.D.	Chemistry	Dept of Chemistry, Cornell University, New York, U.S.A.
Prof. M. McGlinchey	Ph.D.	Chemistry	School of Chemistry and Chemical Biology, U.C.D.
Dr. M. Tacke	M.Sc.	Chemistry	School of Chemistry and Chemical Biology, U.C.D.
Prof. A. Powell	Ph.D.	Chemistry	Institute for Inorganic Chemistry, Karlsruhe Institute of Technology, Germany
Dr. A. Beeby	Ph.D.	Chemistry	Dept of Chemistry, University of Durham, U.K.
Prof. T. Gallagher	Ph.D.	Chemistry	Dept of Chemistry, University of Bristol, U.K.
Dr. G. Williams	Ph.D.	Chemistry	Dept of Chemistry, University of Durham, U.K.
Prof. M. Sangermano	Ph.D.	Chemistry	Dipartimento di Scienza dei Materiali e Ingegneria Chimica, Politecnico di Torino, Italy
Prof. P. O'Brien	Ph.D.	Chemistry	School of Chemistry, University of Manchester, U.K.
Prof. A. Da Silvi	Ph.D.	Chemistry	School of Chemistry and Chemical Engineering, Queen's University Belfast, Northern Ireland, U.K.
Dr. S. Pope	Ph.D.	Chemistry	School of Chemistry, Cardiff University, Wales, U.K.
Dr. H. Lam	Ph.D.	Chemistry	School of Chemistry, University of Edinburgh, Scotland, U.K.
Prof. G. Sukhorukov	Ph.D.	Chemistry	School of Engineering and Materials Science, Queen Mary University of London, U.K.
Prof. R. Anderson	Ph.D.	Chemistry	Sunderland Pharmacy School, University of Sunderland, U.K.
Prof. M. Brust	Ph.D.	Chemistry	Dept of Chemistry, University of Liverpool, U.K.
Prof. S. Faulkner	Ph.D.	Chemistry	Chemistry Research Laboratories, University of Oxford, U.K.
Prof. G. Redmond	M.Sc.	Chemistry	School of Chemistry and Chemical Biology, U.C.D.

Dr. A. Pénicaud	Ph.D.	Chemistry	Centre de Recherche Paul Pascal, Université de Bordeaux-I, France
Dr. J. Thomas	Ph.D.	Chemistry	Dept of Chemistry, University of Sheffield, U.K.
Prof. D. Parker	Ph.D.	Chemistry	Dept of Chemistry, University of Durham, U.K.
Dr. K. Ryan	Ph.D.	Chemistry	Dept of Chemical and Environmental Sciences, University of Limerick
Prof. D. Diamond	M.Sc.	Chemistry	The National Centre for Sensor Research, D.C.U.
Dr. T. Smyth	Ph.D.	Chemistry	School of Chemical and Environmental Sciences, University of Limerick
Prof. N. Allan	Ph.D.	Chemistry	School of Chemistry, University of Bristol, U.K.
Dr. F. Heaney	Ph.D.	Chemistry	Dept of Chemistry, N.U.I. Maynooth, Co. Kildare
Prof. P. Kelly	Ph.D.	Computer Science and Statistics	Dept of Computing, Imperial College London, U.K.
Dr. M. Wilson	Ph.D.	Computer Science and Statistics	Graduate School of Creative Arts and Media, National College of Art and Design, Dublin
Prof. R. Bisseling	Ph.D.	Computer Science and Statistics	Mathematical Institute, Utrecht University, The Netherlands
Prof. G. Houben	Ph.D.	Computer Science and Statistics	Software Technology Department, Delft University of Technology, The Netherlands
Dr. R. Farrell	M.Sc.	Computer Science and Statistics	Dept of Electronic Engineering, N.U.I. Maynooth, Co. Kildare
Mr. H. McCabe	M.Sc.	Computer Science and Statistics	Dept of Informatics, Blanchardstown Institute of Technology, Dublin
Dr. L. Fuentes	Ph.D.	Computer Science and Statistics	ETSI Telecomunicacion, Universidad de Malaga, Spain
Dr. J. Buckley	Ph.D.	Computer Science and Statistics	Computer Science Department, University of Victoria, British Columbia, Canada
Dr. E. Reinhard	Ph.D.	Computer Science and Statistics	Dept of Computer Science, University of Bristol, U.K.
Prof. J. Magee	Ph.D.	Computer Science and Statistics	Dept of Computing, Imperial College London, U.K.

Prof. K. Hannah	Ph.D.	Computer Science and Statistics	Calgary, Alberta, Canada
Prof. H. Vilhjalmsson	Ph.D.	Computer Science and Statistics	School of Computer Science, Reykjavik University, Iceland
Dr. D. Gutierrez	M.Sc.	Computer Science and Statistics	Universidad de Zaragoza, Spain
Prof. R. Fisher	Ph.D.	Computer Science and Statistics	School of Informatics, University of Edinburgh, Scotland, U.K.
Prof. P. Pelachaud	Ph.D.	Computer Science and Statistics	Institut TÉLÉCOM, TÉLÉCOM Paris Tech, France
Dr. A. Shearer	Ph.D.	Computer Science and Statistics	School of Physics, N.U.I. Galway
Dr. A. Moore	Ph.D.	Computer Science and Statistics	Computer Laboratory, University of Cambridge, U.K.
Prof. M. Milard	Ph.D.	Computer Science and Statistics	Dept of Computer Science, Linnaeus University, Sweden
Dr. J. Singer	Ph.D.	Computer Science and Statistics	School of Computing Science, University of Glasgow, Scotland, U.K.
Prof. A. Quigley	Ph.D.	Computer Science and Statistics	School of Computer Science, University of St. Andrew's, Fife, Scotland, U.K.
Dr. J. Collomosse	Ph.D.	Computer Science and Statistics	CVSSP, University of Surrey, U.K.
Prof. C. Ghezzi	Ph.D.	Computer Science and Statistics	Politecnico di Milano, Italy
Dr. A. Beskos	Ph.D.	Computer Science and Statistics	Dept of Statistical Science, University College London, U.K.
Prof. Y. Chrysanthou	Ph.D.	Computer Science and Statistics	Dept of Computer Science, University of Cyprus, Nicosia, Cyprus
Prof. A. Chalmers	M.Sc.	Computer Science and Statistics	International Digital Laboratory, University of Warwick, Coventry, U.K.
Prof. J. Carthy	Ph.D.	Computer Science and Statistics	Dept of Computer Science, U.C.D.

Prof. M. Mulvenna	Ph.D.	Computer Science and Statistics	School of Computing and Mathematics, University of Ulster, Co. Antrim, Northern Ireland, U.K.
Prof. P. Nolan	Ph.D.	Computer Science and Statistics	Stafford, U.K.
Prof. W. Nutt	Ph.D.	Computer Science and Statistics	Faculty of Computer Science, Free University of Bozen-Bolzano, Italy
Prof. H. Langseth	Ph.D.	Computer Science and Statistics	Dept of Computer and Information Science, Norwegian University of Science and Technology, Trondheim, Norway
Prof. C. Sreenan	M.Sc.	Computer Science and Statistics	Dept of Computer Science, U.C.C.
Prof. N. Friel	M.Sc.	Computer Science and Statistics	School of Mathematical Sciences, U.C.D.
Dr. D. Lawless	M.Sc.	Computer Science and Statistics	School of Computing, D.I.T.
Prof. M. McDonald	Ph.D.	Engineering	Dept of Civil Engineering and the Environment, University of Southampton, U.K.
Dr. D. Finn	Ph.D.	Engineering	School of Electrical, Electronic and Mechanical Engineering, U.C.D.
Dr. P. Ibanez	Ph.D.	Engineering	Plataforma Solar de Almeria, Spain
Prof. J. Cotton	M.Sc.	Engineering	Dept of Mechanical Engineering, McMaster University, Ontario, Canada
Dr. N. Ní Nualláin	M.Sc.	Engineering	Dept of Civil and Environmental Engineering, University College Cork
Prof. D. Crothers	Ph.D.	Engineering	Dept of Applied Maths and Theoretical Physics, Queen's University Belfast, Northern Ireland, U.K.
Prof. A. Hilton	Ph.D.	Engineering	Centre for Vision, Speech and Signal Processing, University of Surrey, U.K.
Dr. G. Woods	M.Sc.	Engineering	Dept of Manufacturing and Design Engineering, D.I.T.
Dr. E. Ahearne	M.Sc.	Engineering	School of Electrical, Electronic and Mechanical Engineering, U.C.D.
Prof. M. Flanagan	Ph.D.	Engineering	Dept of Film & Media Studies, Dartmouth College, New Hampshire, U.S.A.

Prof. J. Konstanty	Ph.D.	Engineering	Faculty of Metals Engineering & Industrial Computer Science, University of Science & Technology, Krakow, Poland
Prof. D. Fitzpatrick	Ph.D.	Engineering	School of Electrical, Electronic and Mechanical Engineering, U.C.D.
Prof. M. Pomeroy	Ph.D.	Engineering	Dept of Materials Science and Technology, University of Limerick
Prof. M. Gilchrist	M.Sc.	Engineering	School of Engineering, U.C.D.
Dr. H. Lewis	M.Sc.	Engineering	Dept of Manufacturing and Operations Engineering, University of Limerick
Dr. M. Cotterell	M.Sc.	Engineering	Dept of Mechanical Engineering, Cork Institute of Technology
Prof. H. Chandler	Ph.D.	Engineering	School of Engineering, University of Aberdeen, Scotland, U.K.
Prof. P. Di Marco	Ph.D.	Engineering	Dept of Energy and Systems Engineering, University of Pisa, Italy
Dr. K. Gavin	Ph.D.	Engineering	School of Architecture, Landscape and Civil Engineering, U.C.D.
Dr. J. Walker	Ph.D.	Engineering	Dept of Electronic and Computer Engineering, University of Limerick
Prof. J. Astley	Ph.D.	Engineering	Institute of Sound and Vibration Research, University of Southampton, U.K.
Dr. J. Hall	M.Sc.	Engineering	Dept of Mechanical Engineering, University of New Brunswick, Canada
Prof. J. Webster	Ph.D.	Engineering	Biomedical Engineering, University of Wisconsin-Madison, U.S.A.
Dr. A. Gonzalez	Ph.D.	Engineering	School of Architecture, Landscape and Civil Engineering, U.C.D.
Prof. J. Longhurst	Ph.D.	Engineering	Faculty of Environment and Technology, University of the West of England, Bristol, U.K.
Prof. A. Hirschberg	Ph.D.	Engineering	Technische Universiteit Eindhoven, The Netherlands
Prof. W. Pula	Ph.D.	Engineering	Institute of Geotechnics and Hydrotechnics, Wroclaw University of Technology, Poland
Dr. E. Jones	Ph.D.	Engineering	Dept of Electrical and Electronic Engineering, N.U.I. Galway
Dr. J. Cotton	Ph.D.	Engineering	Dept of Mechanical Engineering, McMaster University, Ontario, Canada

Prof. M. Carey	Ph.D.	Engineering	Institute for Transport Studies, University of Leeds, U.K.
Mr. W. Reddington	M.Sc.	Engineering	Dept of Manufacturing and Design Engineering, D.I.T.
Prof. J. Bonjour	Ph.D.	Engineering	Centre de Thermique de Lyon, Université Lyon, France
Prof. Z. Travnicek	Ph.D.	Engineering	Institute of Thermomechanics, Academy of Sciences of the Czech Republic, Prague, Czech Republic
Prof. M. Murray	Ph.D.	Engineering	Centre for Biomedical Imaging, Neuropsychology and Neurohabilitation, Lausanne, Switzerland
Prof. M. Stoddart	Ph.D.	Engineering	Musculoskeletal Regeneration Program, AO Research Institute Davos, Switzerland
Dr. R. Roche	M.Sc.	Engineering	Dept of Psychology, N.U.I. Maynooth, Co. Kildare
Prof. B. Aazhang	Ph.D.	Engineering	Dept of Electrical and Computer Engineering, Rice University, Texas, U.S.A.
Dr. R. Kölliker	Ph.D.	Genetics and Microbiology	Agroscope Reckenholz-Tänikon, Zurich, Switzerland
Prof. C. Spillane	M.Sc.	Genetics and Microbiology	Dept of Biochemistry and Biosciences, University College, Cork
Prof. A. Brass	Ph.D.	Genetics and Microbiology	Faculty of Life Sciences, University of Manchester, U.K.
Prof. H. Jenkinson	Ph.D.	Genetics and Microbiology	School of Oral and Dental Sciences, University of Bristol, U.K.
Prof. A. Whitehouse	Ph.D.	Genetics and Microbiology	Institute of Molecular and Cellular Biology, University of Leeds, U.K.
Dr. E. Barrio	Ph.D.	Genetics and Microbiology	Inst. Cavanilles de Biodiversidad I Biología Evolutiva, Universidad de Valencia, Spain
Prof. D. Gally	Ph.D.	Genetics and Microbiology	Centre for Infectious Diseases, University of Edinburgh, Scotland, U.K.
Prof. W. Gallagher	Ph.D.	Genetics and Microbiology	School of Biomolecular and Biomedical Science, U.C.D.
Prof. J. Van Putten	Ph.D.	Genetics and Microbiology	Dept of Infectious Diseases & Immunology, Utrecht University, The Netherlands
Prof. P. Vandenabeele	Ph.D.	Genetics and Microbiology	Dept for Molecular Biomedical Research, University of Ghent, Belgium

Prof.N. Proudfoot	Ph.D.	Genetics and Microbiology	Sir William Dunn School of Pathology, University of Oxford, U.K.
Dr. M. Tuohy	Ph.D.	Genetics and Microbiology	Dept of Biochemistry, N.U.I. Galway
Prof. H. Walczak	Ph.D.	Genetics and Microbiology	Dept of Medicine, Imperial College London, U.K.
Prof. P. Ajmone Marsan	Ph.D.	Genetics and Microbiology	Instituto di Zooternica, Piacenza, Italy
Prof. D. Higgins	M.Sc.	Genetics and Microbiology	Dept of Bioinformatics, U.C.D.
Prof. O. Hanotte	Ph.D.	Genetics and Microbiology	Dept of Biology, University of Nottingham, U.K.
Prof. J. Ma	Ph.D.	Genetics and Microbiology	Division of Cellular and Molecular Medicine, University of London, U.K.
Prof. A. Hanany	Ph.D.	Mathematics	Dept of Physics, Imperial College London, U.K.
Dr. R. Baddeley	Ph.D.	Mathematics	Dept of Experimental Psychology, University of Bristol, U.K.
Prof. J. Plefka	Ph.D.	Mathematics	Institute of Physics, Humboldt University Berlin, Germany
Dr. A. Hegarty	M.Sc.	Mathematics	Dept of Mathematics and Statistics, University of Limerick
Prof. J. Walsh	Ph.D.	Natural Sciences	School of Geological Sciences, U.C.D.
Prof. L. Sandin	Ph.D.	Natural Sciences	Swedish University of Agricultural Sciences, Uppsala, Sweden
Prof. J. Gunn	Ph.D.	Natural Sciences	School of Geography, University of Birmingham, U.K.
Dr. B. Williams	Ph.D.	Natural Sciences	School of Geography, Planning and Environmental Policy, U.C.D.
Dr. P. McGovern	Ph.D.	Natural Sciences	Lunar and Planetary Institute, Texas, U.S.A.
Prof. G. Walker	Ph.D.	Natural Sciences	School of Environment, Risk and Justice, University of Lancaster, U.K.
Dr. P. Jepson	Ph.D.	Natural Sciences	School of Geography and the Environment, Oxford University, U.K.
Prof. C. Kennedy	Ph.D.	Natural Sciences	Emeritus Professor, University of Exeter, Dorset, U.K.
Prof. P. Baas	Ph.D.	Natural Sciences	National Herbarium Nederland, Leiden, The Netherlands
Dr. E. Morgan	M.Sc.	Natural Sciences	School of Biological Sciences, University of Bristol, U.K.

Dr. P. Lyle	M.Sc.	Natural Sciences	Newtownards, Co. Down, Northern Ireland, U.K.
Dr. D. Brophy	M.Sc.	Natural Sciences	Galway-Mayo Institute of Technology, Co. Galway
Prof. B. Morton	Ph.D.	Natural Sciences	Dept of Biology, Natural History Museum, London, U.K.
Dr. H. Coxall	Ph.D.	Natural Sciences	School of Earth and Ocean Sciences, University of Cardiff, Wales, U.K.
Prof. B. Moss	Ph.D.	Natural Sciences	Dept of Botany, University of Liverpool, U.K.
Dr R. Key	Ph.D.	Natural Sciences	British Geological Survey, Edinburgh, Scotland, U.K.
Prof. W. Smyth	Ph.D.	Natural Sciences	Dept of Geography, University College Cork
Prof. J. Gurnell	Ph.D.	Natural Sciences	School of Biological and Chemical Sciences, Queen Mary University of London, U.K.
Prof. M. Boyle	Ph.D.	Natural Sciences	Dept of Geography, N.U.I. Maynooth, Co. Kildare
Dr. M. Wexler	Ph.D.	Natural Sciences	School of Biological Sciences, University of East Anglia, Norfolk, U.K.
Dr. C. Stevenson	Ph.D.	Natural Sciences	School of Geography, Earth and Environmental Sciences, University of Birmingham, U.K.
Dr. M. Sheehy Skeffington	Ph.D.	Natural Sciences	Dept of Botany, N.U.I. Galway
Prof. S. Potts	Ph.D.	Natural Sciences	School of Agriculture, Policy and Development, University of Reading, U.K.
Dr. B. Fady	Ph.D.	Natural Sciences	Institut National de la Recherche Agronomique, Avignon, France
Dr. P. Jordan	Ph.D.	Natural Sciences	School of Environmental Sciences, University of Ulster, Coleraine, Northern Ireland, U.K.
Dr. C. Dalton	Ph.D.	Natural Sciences	Dept of Geography, University of Limerick
Prof. B. Osborne	Ph.D.	Natural Sciences	School of Biology and Environmental Science, U.C.D.
Dr. T. Kelly	M.Sc.	Natural Sciences	Dept of Zoology, Ecology and Plant Science, U.C.C.
Prof. M. Corcoran	M.Litt.	Natural Sciences	Dept of Sociology, N.U.I. Maynooth, Co. Kildare
Prof. G. Walkden	Ph.D.	Natural Sciences	Dept of Geology and Petroleum Geology, University of Aberdeen, Scotland, U.K.

Prof. Dr. G. Wörner	Ph.D.	Natural Sciences	Dept of Geochemistry, Universität Göttingen, Germany
Dr. K. Kirby	Ph.D.	Natural Sciences	Natural England, Peterborough, U.K.
Dr. M. Silgram	Ph.D.	Natural Sciences	ADAS UK Ltd, Wolverhampton, U.K.
Dr. G. Smith	Ph.D.	Physics	School of Physics and Astronomy, University of St. Andrew's, Scotland, U.K.
Prof. J. Ansermet	Ph.D.	Physics	Institut de Physique des Nanostructures, Ecole Polytechnique Federale de Lausanne, Switzerland
Prof. A. Kotov	Ph.D.	Physics	Biomedical Engineering Department, University of Michigan, U.S.A.
Prof. A. Hanany	M.Sc.	Physics	Physics Department, Imperial College London, U.K.
Prof. W. Schwarzacher	Ph.D.	Physics	H.H.Wills Physics Laboratory, University of Bristol, U.K.
Dr. C. Marrows	Ph.D.	Physics	School of Physics and Astronomy, University of Leeds, U.K.
Prof. R. Harrison	Ph.D.	Physics	Space Science and Technology Department, Rutherford Appleton Laboratory, Oxon., U.K.
Prof. U. Kreibig	Ph.D.	Physics	Physics Department, RWTH Aachen, Germany
Prof. D. Givord	Ph.D.	Physics	Laboratoire Louis Néel, Grenoble, France
Prof. Dr J. Feldmann	Ph.D.	Physics	Department für Physik und CeNS, Ludwig Maximilians Universität München, Germany
Dr. J. Doran	M.Sc.	Physics	School of Physics, D.I.T.
Dr. C. Verdozzi	Ph.D.	Physics	Division of Mathematics, Lund University, Sweden
Prof. M. Wilson	Ph.D.	Physics	Dept of Biological Sciences, University of Essex, U.K.
Prof. R. Aogaki	Ph.D.	Physics	Dept of Product Design, Polytechnic University, Sagamihara, Japan
Dr. S. Antohe	Ph.D.	Physics	Faculty of Physics, University of Bucharest, Romania
Prof. K. Dholakia	Ph.D.	Physics	Dept of Physics & Astronomy, University of St. Andrew's, Scotland, U.K.
Prof. C. Lewis	Ph.D.	Physics	Dept of Physics & Astronomy, Queen's University Belfast,

			Northern Ireland, U.K.
Prof. M. Padgett	Ph.D.	Physics	School of Physics & Astronomy, University of Glasgow, Scotland, U.K.
Prof. G. Lanzani	Ph.D.	Physics	Centre for Nanoscience and Technology, Politecnico di Milano, Italy
Prof. J. Moodera	Ph.D.	Physics	Francis Bitter Magnet Laboratory, Massachusetts Institute of Technology, U.S.A.
Prof. J. Dudley	Ph.D.	Physics	Dept of Optics, University of Franche-Comte, Besancon, France
Prof. A. Rochefort	Ph.D.	Physics	Engineering Physics Department, Ecole Polytechnique de Montreal, Quebec, Canada
Prof. A. Kirilyuk	Ph.D.	Physics	Institute for Molecules and Materials (IMM), Radboud University, Nijmegen, The Netherlands
Prof. M. Pemble	Ph.D.	Physics	Tyndall Institute, University College Cork
Prof. E. Anglaret	Ph.D.	Physics	University of Montpellier II, France
Dr. J. Doran	Ph.D.	Physics	School of Physics, D.I.T.
Prof. A. Ferrari	Ph.D.	Physics	Engineering Department, University of Cambridge, U.K.
Prof. J. McLaughlin	Ph.D.	Physics	School of Engineering and NAMRI, University of Ulster, Co. Antrim, Northern Ireland, U.K.
Prof. J. Doyle	Ph.D.	Physics	Armagh Observatory, Northern Ireland, U.K.
Dr. A. Cafolla	M.Sc.	Physics	Dept of Physical Sciences, D.C.U.
Dr. R. Bennett	Ph.D.	Physics	Dept of Chemistry, University of Reading, U.K.
Prof. G. Hughes	M.Sc.	Physics	School of Physical Sciences, D.C.U.

Appendix 6: Taught Course External Examiners by Faculty 2010/11

Faculty of Arts and Humanities	External Examiner		From	To
Master in Theology	Cannon Dr Christina Baxter	St. Johns College, UK	2009	2012
M.Phil. Irish Writing	Prof. Chris Morash	Maynooth, Co. Kildare	2008	2012
Master in Philosophy (Applied Linguistics)	Prof. Maggie Tallerman	University of Newcastle, UK	2008	2010
	Prof. Rosamond Mitchell	University of Southampton, Southampton, UK	Sept. 2009	2012
M.Sc. In Psychology (Applied Behaviour Analysis) - Done	Dr Veronica Cullinan	University of Limerick, Limerick	2008	2011
M.Sc. in Applied Social Research	Prof. Colin Mills	Nuffield College, University of Oxford	2007	2010
	Prof. Diane Perrons	London School of Economics & Political Science, UK	2010	2013
M.Sc. Applied Psychology - Done	Dr Mark Shelvin	University of Ulster, Northern Ireland.	2006	2010
	Dr Ken Gannon	University of East London, London, UK	2009	2011
M.Sc. Business and Management	Dr Debbie Keeling	Manchester Business School, Booth Street West, Manchester, M15 6PB, UK	2011	2014
M.Sc. in Child Protection & Welfare	Prof. Dorothy Scott	Australian Center for Child Protection, University of South Australia	2007	2010
	Prof. Andrew Pithouse	Cardiff School of Social Sciences, Cardiff University, Cardiff, UK	2010	2013
P.Grad. Diploma in Child Protection & Welfare	Prof. Dorothy Scott	Australian Center for Child Protection, University of South Australia	2007	2010
	Prof. Andrew Pithouse	University of Cardiff, Cardiff, UK	2010	2013
Master in Fine Art (Playwriting)	Prof. Dan Rebellato	University of London, UK	2011	2013
M.Phil. Classics	Prof. Mark	Swansea	2008	2011

	Humphries	University, UK		
	Dr Kieran McGroarty	NUI Maynooth, Co. Kildare	2011	2014
Doctorate in Clinical Psychology	Dr Stenfert Kroese	University of Birmingham, Birmingham, UK	2010	2013
	Dr Andrew Thompson	University of Sheffield, UK	2009	2012
	Dr Cynthia Graham	Iris Education Centre, Warneford Hospital, Oxfordshire, England	2009	2012
	Dr Ailsa Russell	Kings College, London, UK	2011	2014
	Dr Suzanne Guerin	School of Psychology, UCD, Ireland	2011	2012
M.Sc. In Clinical Speech & Language Studies - Done	Professor Fiona Gibbon	University College, Cork	2009	2012
PG Diploma/M.Sc. in Clinical Speech & Language Studies (Dysphagia) - Done	Dr Nathalie Rommell	Dept. of Neurosciences, K.U. Leuven, Leuven, Belgium.	2008	2011
	Prof. Fiona Gibbon	University College Cork, Cork	2009	2012
	Ms Celia Harding	City University London, London, UK	2011	2014
M.Phil. in Comparative European Politics	Dr M.A.Bruter	London School of Economics and Political Science, London UK	2008	2011
M.Phil. in Comparative Literature	Dr Lucia Boldrini	Goldsmiths College, London, UK	2010	2013
PG Diploma in Conflict & Dispute Resolution Studies	Prof. Andrew Williams	University of St. Andrews, UK	2008	2011
Master in Science in Counselling Psychology	Prof. John McLeod	University of Abertay, Dundee, Scotland	2006	2009
Doctor in Counselling Psychology	Prof. Mick Cooper	University of Strathclyde, Glasgow, Scotland	2009	2012
	Prof. Jeanne Watson	University of Toronto, Ontario, Canada	2011	2014
	Dr Sarah Knox	Marguette University, Milwaukee, USA	2010	2013

Postgraduate Diploma in Conflict & Dispute Resolution Studies	Prof. A.J. Williams	University of St Andrews, St Andrews, Fife, Scotland	2008	2011
	Prof. William Thompson	University of Liverpool, UK	2011	2014
M.Sc. In Clinical Supervision	Dr Mary B Ryan	NUI Maynooth, Co. Kildare	2007	2010
	Dr Maja O'Brien	Oxford, London	2008	2011
M.Phil. Conflict Resolution & Reconciliation	Dr Claire Mitchell	Queens University, Belfast, N Ireland	2008	2011
	Prof. Gillian Robinson	University of Ulster, Londonderry, N. Ireland	2011	2014
Postgraduate Diploma in Continuing Professional Development	Dr Colette Murphy	Queens University, Belfast, N Ireland	1 Sept 2009	2012
M.Phil. Creative Writing	Prof. McNeillie	University of Exeter, UK	2009	2012
M.Sc. in Drug and Alcohol Policy	Karen Duke	Middlesex University, Hendon, London	2008	2011
M.Sc. Economics	Prof. Canice Prendergast	Graduate School of Business, University of Chicago, Chicago, Illinois, USA	2007	2010
	Prof. Charles Nolan	University of Glasgow, Scotland	2010	2013
	Prof. Karl Whelan - one year only	UCD, Dublin 4	2009	2010
M.Sc. in Economic Policy Studies	Prof. Peter Jackson	University of Leicester, Leicester, UK	2008	2012
	Prof. Thomas Boylan	NUI Galway, Galway, Ireland	2010	2012
Post Graduate Diploma in Education - Secondary	Prof. Gerry McNamara	DCU, Dublin, Ireland	2007	1905
	Dr Aidan Mulkeen	Dept. Ed., NUI Maynooth, Co. Kildare	2010	1905
M.Phil. in English Language Teaching	Prof. C Kennedy	University of Birmingham, Birmingham, UK	2007	2010
	Dr Ema Ushioda	University of Warwick, Warwick, UK	2010	2013

M.Phil./P.Grad Dip. Ecumenical Studies	Dr Paul Damian Murray	Durham University, Durham, England	2008	2011
M.Phil. Intercultural Theology & Interreligious Studies	Prof. Kajsa Ahlstrand	University of Uppsala, Sweden	2011	2014
M.Phil. In European Studies	Dr Christian Noack	NUI Maynooth, Co. Kildare	2009	2012
M.Phil. Irish Film, Music & Theatre	Prof. Anthony Roche	UCD, Dublin, Ireland	2009	2012
M.Phil. in Film Theory & History	Dr Susan Smith	University of Sunderland, UK	2009	2012
M.Sc. in Finance	Prof. Angela Black	University of Aberdeen, Aberdeen, Scotland	2008	2011
M.Phil./P.Grad Dip in Gender & Women's Studies	Prof. Heidi Safia Mirza	University of London, England.	2008	2011
	Prof. Mary O'Dowd	Queen's University, Belfast, Northern Ireland	2011	2012
M.Phil./P.Grad Dip German Literature and Language Pedagogy	Prof. Andrew Barker	University of Edinburgh, Scotland	2008	2012
M.Sc. International Politics	Dr Thomas Sattler	UCD, Dublin 4	2010	2013
Master in Philosophy in Irish Art History	Dr Christa-Maria Lerm Hayes	University of Ulster, n. Ireland	2007	2010
	Dr Lisa Godson	NCAD, Dublin 7	2010	2013
M.Phil. Linguistics	Prof. Maggie Tallerman	University of Newcastle upon Tyne, UK	2008	2011
	Dr Nikolas Gisborne	University of Edinburgh, Scotland	2011	2014
Master in Philosophy in Literary Translation	Prof. George Talbot	University of Hull, England.	2007	2010
	Ms Adrienne Mason	University of Bristol, UK	2010	2013
M.Phil. in Literature of the Americas	Prof. Susan Castillo	Kings College London	2007	2010
	Dr Lee Jenkins	UCC, Cork	2010	2013
LLM (All)	Prof. Sarah Worthington	London School of Economics, UK	2009	2012
	Prof. Damian Chalmers	LSE, London, UK	2007	2011
	Prof. Niamh Nic Shuibhne	University of Edinburgh, Scotland	2011	2014
	Prof. Steve Hedley	UCC, Cork	2008	2011

	Prof. Michael O'Flaherty	University of Nottingham, Nottingham, UK	2010	2013
MBA	Prof. Thomas Lawton	Cranfield University, Imperial College London, UK	2007	2010
	Prof. Bart Rosenbloom	Drexel University, PA, USA	2008	2010
	Prof. Hugh O Neill	UNC Kenan-Flagler Business School, NC, USA	2010	2013
Master in Education (all strands)	Prof. Andrew Hobson	University of Nottingham, Nottingham, UK	2010	2011
	Dr Oliver McGarr	University of Limerick, Limerick, Ireland	2011	2014
Master in Education -School Leadership	Dr Josephine Boland	NUI, Galway	2008	2010
Master in Education - Guidance & Counselling	Ms Margaret Daly	UCD, Dublin 4	2007	2010
Master in Education (Leadership and Management in Education)	Mr Gareth Perry	University of Ulster, Coleraine, NI	2007	2010
	Prof. Constance Deuschle	Valparaiso University, Indiana, USA	2009	2012
Higher Diploma in Education (Primary Teaching)	Dr Catherine Furlong	DCU / St Pats College Drumcondra Dublin Ireland	2007	2011
	Dr Maeve Martin	Maynooth, Co. Kildare	2010	2011
	Prof. Teresa O'Doherty	Mary Immaculate College, University of Limerick, Limerick	2010	2013
	Dr Tony Lyons	Mary Immaculate College, University of Limerick, Limerick	2011	2012
M.Sc. In International Management	Prof. Dr. N. Angermuller	Harz University, Germany	2009	2012
Postgrad Diploma in Management	Prof. C. Bowman	Cranfield University, USA.	2007	2010
M.Sc./P.Grad.Dip European Employment Studies	Prof. Chris Warhurst	University of Strathclyde, Glasgow, Scotland	2010	2013
Master in Science	Prof. Hugh O	University of North	2007	2010

(Management) in International Business	Neill	Caroline at Chapel Hill, USA		
M.Sc. (Mgmt) Management Practice	Prof. Steve Armstrong	University of Hull, UK	2007	2010
Master in Science (Management) in Organisation Behaviour	Prof. Patrick Flood	Dublin City University, Dublin 9	2007	2011
Master in Science (Management) in Strategic Management	Mr Cliff Bowman	Cranfield University, Cranfield UK	2007	2010
Master in Science (Management) in Business Administration	Prof. Andrew P Kakabadse	Cranfield School of Management, Cranfield University, Cranfield UK	2009	2010
Master in Studies (School Leadership)	Dr Josephine Anne Boland	NUI Galway, Ireland	2008	2011
Master in Social Work (M.S.W.)	Prof. Vivienne Cree	University of Edinburgh, Scotland	2009	2012
M.Phil. Medieval History	Dr Julia Barrow	School of History, University Park, Nottingham, UK	2008	2011
	Dr James Fraser	University of Edinburgh, Scotland	2011	2014
M.Phil. in Medieval Language, Literature and Culture	Dr Helen Philips	University of Cardiff, Cardiff, UK	2007	2010
	Mr Piero Boitani	Sapienza University of Rome, Italy	2011	2014
M.Phil./P.Grad Dip. in Modern Irish History	Dr Margaret O Callaghan	Queens University, Belfast, N Ireland	2008	2011
M.Phil./P.Grad Dip. (Peace Studies)	Prof. Beverly Milton Edwards	Queens University, Belfast, N Ireland	2007	2010
	Prof. Tom Lodge	University of Limerick, Limerick, Ireland	2008	2011
	Professor Luc Reyckler	University of Leuven, Belgium	2009	2012
Master in Philosophy in Popular Literature	Dr Keith Williams	University of Dundee, Scotland	2008	2011
	Dr. Scott McCracken	School of English, Keele University, UK	2011	2014
Master in Philosophy in Psychoanalytic Studies	Dr Werner Prall	Middlesex University, London, UK	2009	2012
M.Sc. in Psychology (Applied Behaviour Analysis)	Dr Veronica Cullinan	Mary Immaculate College, University	2008	2011

		of Limerick		
	Dr Simon Dymond	Swansea University, Wales	2011	2014
M.Phil. Public History and Cultural Heritage	Prof. Justin Champion	Royal Holloway College, University of London, London, UK	2011	2014
M.Phil./P.Grad Dip. (Social Work Research)	TBA			
M.Phil. in Race, Ethnicity & Conflict	Dr Breda Gray	University of Limerick, Limerick, Ireland	2007	2010
	Prof. Gargi Bhattachryya	School of Languages & SS, Aston University, Birmingham, UK	2011	2014
Master in Philosophy in Reconciliation Studies	Dr Claire Mitchell	Queens University, Belfast, N Ireland	2008	2011
	Dr Michael Hayes	St. Mary's University College, Twickenham, England	2009	2012
M.Phil. & P. Grad. Dip in Reformation & Enlightenment Studies	Dr Elaine Fulton	University of Birmingham, UK	2009	2012
Master in Philosophy (Speech & Language Processing)	Prof. Anne-Maria Laukkanen	Dept. Speech Communication & Voice Research, University of Tampere, Finland	2009	2012
M.Phil. in Textual and Visual Studies: Nineteenth & Twentieth Century France	Prof. Harrow	University of Bristol, UK	2009	2012
M.Phil. in Theatre & Performance	Prof. Martin White	University of Bristol, Bristol, UK	2009	2012
Doctor in Political Science (Ph.D.)	Prof. C.Van der Eijk	University of Amsterdam	2007	2010
	Prof. Thomas J Brininger	Dept of Political Science, University of Mannheim	2011	2014
M.Sc. In Political Science	Dr John Garry	School of Politics, Queens University Belfast	2011	2014
	Prof. Thomas J Brauninger	Dept. Of Political Science, School of Social Sciences, University of Mannheim, 68131	2011	2014

		Mannheim, Germany		
P.Grad.Dip./M.Phil in Music and Media Technologies	Dr Eric Lyon	Queens University, Belfast, N Ireland	2008	2011
	Dr Jeffrey Weeter	UCC Cork, Cork, Ireland	2011	2014
Postgraduate Diploma in Old Irish	Dr Uaitear Mac Gearailt	St Patricks College Drumcondra, Dublin, Ireland	2008	2011
Higher Diploma in Psychology	Prof. Roddy Cowie	School of Psychology, QUB, Belfast, NI	2009	2012
PG Diploma in Applied Behaviour Analysis	Dr Geraldine Leader	NUI, Galway, Galway, Ireland	2007	2010
	Dr Jennifer Austin	University of Glamorgan, UK	2010	2013
M.Sc. In Applied Behaviour Analysis	Dr Simon Dymond	Swansea University, UK	2011	2014
PG Diploma In Service Education	Dr Angi Malderez	University of Leeds, Leeds, UK	01 October 208	2011
Faculty of Engineering, Mathematics and Science				
M.Sc. in Biodiversity & Conservation	Prof. Robert Marrs	University of Liverpool, UK	2007	2010
M.Sc./P.Grad Dip in Bioengineering - 2008/09 outstanding	Dr G.J. Verkerke	University Med Centre Groningen, The Netherlands	2010	2013
M.Sc. In Civil Engineering	Prof. Thomas Curtis	Newcastle University, Newcastle-upon- Tyne, England.	2008	2011
M.Sc. In Engineering (Environmental / Transportation / Structural & Geotechnical)	Prof. Thomas Curtis	Newcastle University, Newcastle-upon- Tyne, England.	2011	2012
M.Sc. in Computer Science(Interactive Entertainment Technology)	Prof. Phillip Slusallek	Saarland University, Germany	2007	2010
	Prof. Yiorgos Chrysantou	University of Cyprus, Nicosia, Cyprus	2010	2013
M.Sc/P.Grad Dip Computer Science (Networks & Distributed Systems)	Prof. Jeff Magee	Imperial College London, England	2007	2011
	Prof. Maarten Van Steen	University of Leiden, The Netherlands	2010	2013

P.Grad Dip/M.Sc.in Computer Science (Ubiquitous Computing)	Prof. C. Becker	University of Mannheim, Mannheim, Germany	2009	2012
M.Sc. In Development Practice	Prof. James Smith	University of Edinburgh, Scotland	2010	2013
Master in Engineering (M.A.I)	TBA			
Master in Engineering (M.A.I)Recurrent Education	TBA			
M.Sc.in Engineering	TBA			
M.Sc. In Environment & Development	Dr Anthony Bebbington	University of Manchester, Manchester, UK	2009	2012
	Prof. John Barry	Queens University, Belfast, N Ireland	2010	2011
M.Sc. Environmental Sciences	Dr John Sweeney	NUI, Maynooth	2004	2007
	Prof. Steven J. Hawkins	Bangor University, Northern Ireland	2007	2010
M.Sc. in Health Informatics	Prof. Johan Van der Lei	Erasmus University Rotterdam, Netherlands.	2007	2010
	Prof. Alan Rector	University of Manchester, Manchester, UK	2007	2010
	Prof. Robert Procter	University of Manchester, UK	2010	2013
M.Sc.in High Performance Computing	Dr David Henty	The University of Edinburgh, Scotland.	2008	2011
M.Sc. in Mechanical Engineering (ERASMUS MUNDUS)	Dr Laurent Dala	University of West England, Bristol UK	2008	2011
M.Sc. Interactive Digital Media	Prof. Mary Flanagan	Dartmouth College, NH, USA	2009	2012
PG Diploma in Applied Building Repair & Conservation - Done	Mr Paul McMahon	Office of Public Works, Dublin	2008	2011
Postgraduate Diploma in Construction Law & Contract Admin	Mr John Barber	Kings College London, London, UK	2009	2012
M.Sc/P.Grad.Dip in Management of Information Systems	Prof. Leslie Worrall	Coventry University, UK	2008	2011
M.Sc in Technology & Learning	Prof. Rose Luckin	Institute of Education, University of London, England	2007	2010

	Prof. Mike Sharples	University of Nottingham, Nottingham, UK	2010	2013
Postgraduate Diploma in Environmental Engineering	Dr Adrian Butler	Dept. Civil & Env Eng., Imperial College, London UK	2008	2011
Postgraduate Diploma in Fire Safety Practice	Dr Karen Boyce	University of Ulster, NI	2009	2012
P.Grad. Diploma in Health Informatics	Prof. Johan Van der Lei	Erasmus University Rotterdam, Netherlands.	2007	2010
	Prof. Alan Rector	University of Manchester, Manchester, UK	2007	2010
Postgraduate Diploma in Health & Safety in Construction	Mr Martin O'Halloran	Health & Safety Authority Dublin	2007	2010
	Dr Anne Drummond	UCD, Dublin 4	2010	2013
Postgraduate Diploma in Highway and Geotechnical Engineering	Prof. Martin S. Snaith	University of Birmingham, UK	2008	2011
Postgraduate Diploma in Physical Planning	TBA			
Postgraduate Diploma in Project Management	Dr Alan V.Hore	Dublin Institute of Technology, Bolton St, Dublin, Ireland	2008	2011
Postgraduate Diploma in Statistics	Dr Brendan Murphy	UCD, Dublin	2010	2013
Faculty of Health Sciences				
D.Dent.Ch Oral Surgery	Prof. Graham R. Ogden	Dundee Dental School, University of Dundee, Scotland	2009	2012
	Prof. John J Marley	Queen's University of Belfast, School of Dentistry, Northern Ireland.	2011	2014
D.Dent.Ch Orthodontics	Prof. Franser McDonald	Dental Institute, London, UK	2009	2012
D.Dent.Ch. Paediatric Dentistry	Prof. Christopher Deery	University of Sheffield, UK	2007	2010
	Prof. Martin Kinirons	Cork Dental Hospital & School, Wilton, Cork	2008	2011

	Prof. Dafydd Evans	Preventive and Children's Section, Dundee Dental Hospital and School, Dundee, Scotland	2011	2014
M.Dent. Ch. Periodontology	Prof. Mariano Sanz	University of Complutense, Madrid, Spain	2010	2013
D.Dent.Ch.Prostodontics	Prof. S. Rosenstiel	Ohio State University USA	2007	2011
	Prof. Jeremy Rees	Cardiff University, Dental School, Cardiff, Wales	2012	2015
D.Dent.Ch in Special Care Dentistry	Dr Sheelagh Thompson	School of Dentistry, Cardiff University, Wales	2008	2011
	Prof. Luc Marks	Chair Central of Special Care, UZ-GENT-Ghent University Hospital, Ghent, Belgium	2011	2014
M.Sc. Cancer Care	Dr Maura Dowling	NUI Galway, Galway, Ireland	2009	2012
	Ms Eileen Furlong	School of Nursing, Midwifery & Health Systems, UCD	2011	2014
M.Sc. In Science in Cardiology	Dr Colm Hanratty	Belfast City Hospital, Belfast, N. Ireland	2009	2011
	Dr. Alison Duncan	Royal Brompton Hospital, London, United Kingdom	2011	2014
M.Sc. In Cardiovascular Rehabilitation & Prevention	Dr Catherine Blake	UCD, Dublin 4	2009	2012
Higher Diploma in Children's Nursing	Ms Dympna O Connell	Dept of Nursing & Health Sciences, St. Angela's College, Sligo, Ireland	2007	2010
	Dr Bernie Carter	University of Central Lancashire, Preston, UK	2010	2013
M.Sc/Pgrad Dip in Clinical Chemistry - Done	Prof. R Swaminathan	Kings College London, London, UK	2006	2010
	Prof. Martin Crook	University Hospital, Lewisham, London, UK	2010	2013

PGDip in Clinical Dental Technology	Prof. Mark Thomason	University of Newcastle-Upon-Tyne, Newcastle, UK	2011	2014
PG Diploma in Clinical Speech & Language Studies	Dr Nathaniel Rommel	University of Leuven, Belgium	2009	1905
M.Sc. In Clinical Speech & Language Studies	Prof. Fiona Gibbon	UCC, Cork, Ireland	2009	2012
P.Grad.Dip/M.Sc. in Community Pharmacy	Dr Christopher Langley	Aston University, Birmingham, UK	2009	2012
M.Sc. In Dementia	Prof. John Keady	University of Manchester, UK	2010	2013
M.Sc. In Disability Studies	Dr Tamar Heller	University of Illinois, USA	2010	2013
P.Grad.Dip/M.Sc. in Exercise Physiology	Prof. Myra Nimmo	Loughborough University, Lancaster, UK	2007	2010
	Prof. Giuseppe De Vito	University College Dublin, Belfield, Dublin 4	2011	2013
	Dr Stuart Warmington	Deakin University, Melbourne, Australia	2011	2011
M.Sc/Pgrad Dip in Gerontological Nursing	Prof. Debbie Tolson	Glasgow Caledonian University, Glasgow, Scotland	2009	2012
M.Sc. in Global Health	Prof. Michael Reich	Harvard School of Public Health, Boston, USA	2008	2011
	Prof. Daniel Chandramohan	London School of Hygiene & Tropical Medicine, London, UK	2010	2013
M.Sc. Health Services Management	Prof. Johan Calltorp	The Nordic School of Public Health, Stockholm, Sweden	2009	2012
M.Sc. Hospital Pharmacy	Prof. Bryony Dean Franklin	Imperial College, London, UK	2010	2014
M.Sc. in Medical Imaging - MRI	Ms Catherine Westbrook	University of Cambridge, UK	2009	2014
M.Sc. In Medical Imaging - Nuclear Medicine	Mr Kenneth Graham	University of Cumbria, UK	2007	2014
PG Diploma in Medical Imaging	Ms Catherine Westbrook	Anglia Ruskin University, UK	2009	2014
M.Sc/P.Grad Dip in Mental Health	Prof. Patrick McCartan	Queens University, Belfast, N Ireland	2007	2010

	Dr. Theodore Stickley	University of Nottingham, UK	2011	2014
M.Sc. in Midwifery	Dr Mary Steen-Greaves	University of Chester, UK	2009	2012
M.Sc. Molecular Medicine	Prof. David Jackson	University of Oxford, Oxford, UK	2008	2011
M.Sc. in Molecular Pathology	TBA			
M.Sc. in Neuroscience	Prof. Victor Hugh Perry	University of Southampton, UK	2010	2013
M.Sc. in Nursing	Ms Marie Glackin	Queens University, Belfast	2007	2010
	Prof. Kathleen Murphy	NUI, Galway, Galway, Ireland	2011	2014
M.Sc. Nursing CHSE/PG Diploma CHSE	Ms Mary Watkins	University of Ulster, N. Ireland	2006	2010
M.Sc. in Occupational Therapy	Dr Alison Porter Armstrong	University of Ulster, N. Ireland	2009	2012
M.Sc. in Palliative Care	Prof. Jane Seymour	Queens Medical Centre, Nottingham, UK	2007	2010
	Dr John Costello	University of Manchester, UK	2010	2013
M.Sc/P.Grad Dip in Pharmaceutical Analysis	Dr Robert Williams	Enniskerry, Co. Wicklow, Ireland	2008	2011
	Mr Costin Camarasu	Dundalk Co. Louth, Ireland	2011	2014
M.Sc. in Pharmaceutical Medicine	Prof. G. Dennis Johnston	Queens University, Belfast, N Ireland	2006	2010
	Prof. David Williams	Dept. Geriatric & General Medicine, Beaumont Hospital, Dublin 9, Ireland	2010	2013
P.Grad.Dip/M.Sc. in Pharmaceutical Manufacturing Technology	Dr Daryl Rees	Bedfordshire, UK	2009	2012
P.Grad.Dip/M.Sc. Physical Sciences in Medicine	Prof. David J Lurie	University of Aberdeen, Scotland	2007	2010
	Prof. David Parker	University of Birmingham, UK	2010	2013
M.Sc. Psychoanalytic Psychotherapy	Dr Edgar Wooster	Peckham, London, UK	2010	2012
M.Sc. In Respiratory Physiotherapy	Dr Catherine Blake	UCD, Belfield, D 4	2009	2012
M.Sc. Sports & Exercise Medicine	Prof. Domhnall MacAuley	Queens University, Belfast, N. Ireland	2008	2011
	Prof. Per Renstrom	Karolinska Institutet, Stockholm, Sweden	2008	2011

Postgraduate Diploma in Clinical Dentistry	Prof. Derrick Mackenzie Chisholm	University of Dundee, Scotland	2008	2012
Postgraduate Diploma in Clinical Health Sciences Education	Ms Mary Watkins	University of Ulster, N. Ireland	2006	2011
	Prof. Kathy Murphy	NUIG, Galway, Ireland	2011	2014
PG Diploma in Cognitive Psychotherapy	Ms Anne Garland	Nottingham Psychotherapy unit, St Ann's House, Nottingham, UK	2007	2010
	Dr Helen Kennerley	Oxford Cognitive Therapy Centre, Warneford Hospital, Oxford, UK	2009	2012
P. Grad Dip in Conscious sedation in dentistry	Dr Leslie Longman	Liverpool Dental Hospital, Royal Liverpool & University Hospitals NHS Trust, Liverpool, UK	2010	2012
Postgraduate Diploma in Oncological Nursing	Ms Maura Dowling	NUI Galway, Galway, Ireland	2007	2010
P. Grad Dip in Pharmaceutical Medicine	Prof. David Williams	Dept. Geriatric & Gen Med., Beaumont Hospital, Dublin 9	2010	2013
A&E Nursing (AMNCH & SJHospital)	Dr Laserina O Connor	National University of Ireland, Dublin	2007	2010
	Mr Mark Tyrrell	UCC, Cork, Ireland	2010	2010

Appendix 7: Applications to the Research register by School for entry in 2011/12 (inc. March 2012) as of 31st January 2012 and registered research students by School.

School	No of Applicants	No of registered students year 1	Number of research students year 1-4	Number of Masters students year 3+	<i>PT</i>	Number of Ph.D. students year 5+	<i>PT</i>	Total registered EU in school	Total registered non-EU in school	Total registered research in school
Biochemistry and Immunology	19	22	79	1	0	6	0	81	4	85
Business	38	10	37	1	0	8	5	40	5	45
Chemistry	35	15	90	0	0	12	0	92	10	102
Computer Science and Statistics	62	35	141	2	0	43	9	147	39	186
Dental Science	29	8	32	0	0	5	2	31	6	37
Drama, Film and Music	14	12	44	0	0	5	1	45	4	49
Education	32	12	63	2	2	20	18	84	3	87
Engineering	99	53	209	8	4	14	3	200	224	224
English	56	24	80	0	0	4	0	67	17	84
Genetics and Microbiology	19	13	65	4	0	6	1	65	7	72
Histories and Humanities	118	28	105	1	1	18	3	101	24	125
Languages, Literatures and Cultural Studies	16	7	32	2	1	10	0	38	6	44
Law	44	23	89	6	4	7	2	90	7	97

Linguistic, Speech and Communication Sciences	20	11	43	2	1	4	1	44	4	48
Mathematics	8	6	20	0	0	2	0	22	0	22
Medicine	169	100	304	6	3	18	5	264	61	325
Natural Sciences	18	26	100	0	0	19	2	107	12	119
Nursing and Midwifery	5	5	42	2	1	7	6	48	1	49
Pharmacy and Pharmaceutical Sciences	19	8	50	0	0	4	1	49	5	54
Physics	35	31	104	2	1	12	0	93	23	116
Psychology	23	45	135	0	0	6	3	135	6	141
Religions, Theology and Ecumenics	33	16	63	2	1	6	1	55	16	71
Social Sciences and Philosophy	85	24	106	2	1	19	1	104	21	125
Social Work and Social Policy	6	8	34	1	1	8	3	39	3	42
Totals	1002	542	2067	44	21	263	67	2041	508	2349

Appendix 8a: Application data for Direct Admissions applications for 2011/12

SCHOOL	Course Title	No of offers made	No of male offers	No of female offers	No of EU offers	No of Non-EU offers	No of Full-Time offers	No of Part-Time offers	No of Registered Students - Year 1 in 11/12	EU	Non-EU
Business	Master in Business Administration (MBA) - FT	49	36	13	19	30	49	0	34	11	23
	Master in Business Administration (MBA) - PT	31	25	6	31	0	0	31	33	33	0
Nursing and Midwifery	Children's Palliative Care modules	16	1	15	16	0	0	16	16	16	0
Misc.	One year student not reading for a higher degree	2	0	2	2	0	2	0	3	3	0
	One term student not reading for a higher degree	13	3	10	3	10	12	1	11	3	8
Total		111	65	46	71	40	63	48	97	66	31

*Table only shows data for accepted students

Appendix 8b: Application data for taught postgraduate applications processed through PAC online application system for 2011/12

School	Course Title	No of Applicants	No of EU Accepted Offers	No of Non-EU Accepted Offers	Total Accepted Offers	% Successful applicants (no. of accepted offers to no. of applicants)	No of Registered Students - Year 1 in 11/12	EU	Non - EU
BUSINESS	M.Sc. Finance (Part Time)	42	10	0	10	23.8%	6	6	0
	M.Sc. Finance (Full Time)	190	43	6	49	25.8%	44	38	6
	M.Sc. International Management (Full Time)	113	13	5	18	15.9%	17	14	3
	M.Sc. International Management (Part Time)	15	0	0	0	0%	0	0	0
	M.Sc. Business and Management	79	13	0	13	16.5%	11	11	0
CHEMISTRY	M.Sc. Chemical and Biological Techniques I	2	0	0	0	0%	0	0	0
	M.Sc. Chemical and Biological Techniques II	0	0	0	0	0%	0	0	0
	Postgraduate Diploma in Chemical and Biological Techniques I	0	0	0	0	0%	0	0	0
	Postgraduate Diploma in Chemical and Biological Techniques II	0	0	0	0	0%	0	0	0
COMPUTER SCIENCE & STATISTICS	M.Sc. Management of Information Systems	50	24	1	25	50%	22	22	0
	M.Sc. Interactive Digital Media	107	19	1	20	18.7%	20	19	1
	M.Sc. Computer Science (Networks & Distributed Systems)	96	8	10	18	18.8%	15	8	7
	M.Sc. Computer Science Mobile & Ubiquitous Computing	82	6	4	10	12.2%	8	5	3
	M.Sc. Technology & Learning	58	31	1	32	55.2%	29	29	0
	M.Sc. Computer Science (Interactive Entertainment Technology)	79	18	3	21	26.6%	22	19	3
	Postgraduate Diploma in Statistics	134	95	10	105	78.4%	104	97	7
	M.Sc. Health Informatics	47	21	0	21	44.7%	21	21	0

DENTAL SCIENCE	Postgraduate Diploma Conscious Sedation Dentistry	11	7	1	8	72.7%	8	7	1
	Clinical Dentistry (P.Grad.Dip)	0	0	0	0	0%	0	0	0
	Special Care Dentistry (P. Grad. Dip)	22	6	0	6	27.3%	6	6	0
	Clinical Dental Technology (P.Grad.Dip)	22	8	1	9	40.9%	0	0	0
DRAMA, FILM & MUSIC	M. Phil. Music & Media Technologies	29	17	0	17	58.6%	11	11	0
	Postgraduate Diploma Music & Media Technologies	1	0	0	0	0%	0	0	0
	M.Phil. Film Theory and History	32	11	1	12	37.5%	12	11	1
	M.Phil. Theatre and Performance	28	6	6	12	42.9%	12	6	6
	M.Phil. Musicology and Music Theory	3	0	0	0	0%	0	0	0
	M.Phil. Irish Film, Music & Theatre	8	0	0	0	0%	0	0	0
	Master in Fine Art (Playwriting) TRU70	14	7	1	8	57.1%	7	6	1
	Master in Fine Art (Playwriting) TRU71	3	0	0	0	0%	1	1	0
EDUCATION	M.Ed. - Aggression Studies (Full Time)	3	0	0	0	0%	0	0	0
	M.Ed. - Aggression Studies (Part Time 2 years)	6	3	0	3	50%	3	3	0
	M.Ed. - Aggression Studies (Part Time 3 years)	2	0	0	0	0%	0	0	0
	M.Ed. - Coaching & Mentoring for Professional Development in Education (FT)	0	0	0	0	0%	0	0	0
	M.Ed. - Coaching & Mentoring for Professional Development in Education (PT 2 yrs)	0	0	0	0	0%	0	0	0
	M.Ed. - Coaching & Mentoring for Professional Development in Education (PT 3 yrs)	0	0	0	0	0%	0	0	0
	M.Ed. - Co-operative Learning (Full Time)	2	0	0	0	0%	0	0	0
	M.Ed. - Co-operative Learning (Part Time 2 years)	13	8	0	8	61.5%	8	8	0
	M.Ed. - Co-operative Learning (Part Time 3 years)	0	0	0	0	0%	0	0	0
	M.Ed. - Drama in Education (Full Time)	6	1	0	1	16.7%	1	1	0

M.Ed. - Drama in Education (Part Time 2 years)	16	8	5	13	81.3%	10	8	2
M.Ed. - Drama in Education (Part Time 3 years)	2	0	0	0	0%	0	0	0
M.Ed. - Early Intervention (Full Time)	1	0	0	0	0%	0	0	0
M.Ed. - Early Intervention (Part Time 2 years)	0	0	0	0	0%	0	0	0
M.Ed. - Early Intervention (Part Time 3 years)	0	0	0	0	0%	0	0	0
M.Ed. - Foundation Studies (Full Time)	13	3	3	6	46.2%	6	3	3
M.Ed. - Foundation Studies (Part Time 2 years)	24	12	0	12	50%	11	11	0
M.Ed. - Foundation Studies (Part Time 3 years)	1	0	0	0	0%	0	0	0
M.Ed. - Leadership and Management in Education (Full Time)	13	2	3	5	38.5%	4	2	2
M.Ed. - Leadership and Management in Education (PT 2 yrs)	52	30	1	31	59.6%	28	27	1
M.Ed. - Leadership & Management in Education (PT 3 yrs)	11	3	0	3	27.3%	2	2	0
M.Ed. - Positive Behaviour Management (Full Time)	4	0	0	0	0%	0	0	0
M.Ed. - Positive Behaviour Management (Part Time 2 years)	18	8	0	8	44.4%	7	7	0
M.Ed. - Positive Behaviour Management (Part Time 3 years)	0	0	0	0	0%	0	0	0
M.Ed. - Science Education (Full Time)	4	0	0	0	0%	0	0	0
M.Ed. - Science Education (Part Time 2 years)	1	0	0	0	0%	0	0	0
M.Ed. - Science Education (Part Time 3 years)	0	0	0	0	0%	0	0	0
M.Ed. - Special Educational Needs (Full Time)	13	1	0	1	7.7%	1	1	0
M.Ed. - Special Educational Needs (Part Time 2 years)	26	15	1	16	61.5%	14	13	1

	M.Ed. - Special Educational Needs (Part Time 3 years)	3	0	0	0	0%	0	0	0
	M.Ed. - Teaching and Learning (Higher Education) Full Time	5	0	0	0	0%	0	0	0
	M.Ed. - Teaching and Learning (Higher Education) Part Time 2 yrs	0	0	0	0	0%	0	0	0
	M.Ed. - Teaching and Learning (Higher Education) Part Time 3 yrs	15	11	0	11	73.3%	8	8	0
	M.Ed. - One Year Thesis (Full Time)	29	24	1	25	86.2%	25	25	0
	Master in Education	1	0	0	0	0%	0	0	0
	Master of Studies (School Leadership)	2	0	0	0	0%	0	0	0
	M.Ed Guidance and Counselling (2 year option)	57	24	0	24	42.1%	24	24	0
ENGINEERING	M.Sc. Mechanical Engineering (ERASMUS MUNDUS)	4	0	0	0	0%	0	0	0
	Postgraduate Diploma in Physical Planning	0	0	0	0	0%	0	0	0
	M.Sc. Bioengineering (Full Time)	57	14	6	20	35.1%	20	14	6
	M.Sc. Bioengineering (Part Time)	8	1	0	1	12.5%	1	1	0
	Postgraduate Diploma Highway and Geotechnical Engineering	13	0	0	0	0%	1	1	0
	M.Sc. Civil Engineering (Full Time)	6	0	0	0	0%	2	2	0
	M.Sc. Civil Engineering (Part Time)	1	0	0	0	0%	0	0	0
	Postgraduate Diploma Construction Law & Contract Administration	40	25	0	25	62.5%	25	25	0
	Postgraduate Diploma Fire Safety Practice	27	10	0	10	37%	9	9	0
	Postgraduate Diploma Project Management	49	27	0	27	55.1%	26	26	0
	Postgraduate Diploma Environmental Engineering	42	23	0	23	54.8%	21	21	0
	Postgraduate Diploma Health and Safety Construction	19	8	0	8	42.1%	8	8	0
Postgraduate Diploma Applied Building Repair & Conservation	28	15	0	15	53.6%	14	14	0	

	M.Sc. Engineering (Environmental)	57	13	1	14	24.6%	13	12	1
	M.Sc. Engineering (Environmental)	10	1	0	1	10%	1	1	0
	M.Sc. Engineering (Transportation)	29	2	0	2	6.9%	2	2	0
	M.Sc. Engineering (Transportation)	6	0	0	0	0%	0	0	0
	M.Sc. Engineering (Structural and Geotechnical)	45	9	1	10	22.2%	9	8	1
	M.Sc. Engineering (Structural and Geotechnical)	5	0	0	0	0%	0	0	0
ENGLISH	M.Phil. Irish Writing	57	7	8	15	26.3%	14	7	7
	M.Phil. Creative Writing	99	11	5	16	16.2%	16	11	5
	M.Phil. Popular Literature	72	14	7	21	29.2%	19	12	7
	M.Phil. Literatures of the Americas	38	6	2	8	21.1%	6	5	1
	M.Phil. Children's Literature	32	13	1	14	43.8%	13	12	1
	M.Phil in Digital Humanities and Culture TRU78	13	6	0	6	46.2%	6	6	0
	M.Phil in Digital Humanities and Culture TRU79	11	4	0	4	36.4%	4	4	0
HISTORIES & HUMANITIES	M.Phil. Medieval History	24	4	2	6	25%	6	4	2
	M.Phil. Gender & Women's Studies (Full Time)	27	6	1	7	25.9%	7	6	1
	M.Phil. Gender & Women's Studies (Part Time)	3	1	0	1	33.3%	1	1	0
	M.Phil. Irish Art History	25	10	0	10	40%	11	10	1
	M.Phil. Early Modern History (Full Time)	34	6	0	6	17.6%	8	7	1
	M.Phil. Modern Irish History	36	15	3	18	50%	17	14	3
	M.Phil. Classics	26	4	4	8	30.8%	8	4	4
	M.Phil. in Public History and Cultural Heritage TRU80	18	7	0	7	38.9%	7	7	0
	M.Phil. in Public History and Cultural Heritage TRU81	10	2	0	2	20%	2	2	0

LANGUAGES, LITERATURES & CULTURAL STUDIES	M.Phil. (Textual and Visual Studies)	13	4	4	8	20%	7	4	3
	M.Phil. Medieval Language, Literature & Culture	14	4	2	6	42.9%	5	3	2
	M.Phil. Early Irish	3	0	0	0	0%	0	0	0
	M.Phil. Literary Translation	36	11	2	13	36.1%	12	10	2
	M.Phil. Comparative Literature	27	4	5	9	33.3%	8	4	4
	M.Phil. German Literature with Language Pedagogy (Full Time)	1	0	0	0	0%	0	0	0
	Postgraduate Diploma Old Irish (Full Time)	6	2	1	3	50%	3	2	1
	M.Phil. German Literature with Language Pedagogy (Part Time)	0	0	0	0	0%	0	0	0
	M.Phil. European Studies	35	15	3	18	51.4%	16	13	3
LAW	LL.M. (Master in Laws)	194	54	4	58	29.9%	55	53	2
	Master in Laws (International and Comparative Law)	59	6	2	8	13.6%	7	5	2
	Master in Laws (International and European Business Law)	77	17	1	18	23.4%	19	18	1
LINGUISTIC, SPEECH & COMMUNICATION SCIENCES	M.Phil. (Applied Linguistics) (Full Time)	19	2	1	3	15.8%	3	3	0
	M.Phil. (Applied Linguistics) (Part Time)	9	3	0	3	33.3%	3	3	0
	M.Phil. (Speech and Language Processing) (Full Time)	7	1	0	1	14.3%	2	2	0
	M.Phil. (Speech and Language Processing) (Part Time)	3	1	0	1	33.3%	1	1	0
	M.Phil. English Language Teaching	17	3	1	4	23.5%	5	4	1
	M.Sc. Clinical Speech & Language Studies	14	7	1	8	57.1%	8	7	1
	Postgraduate Diploma Clinical Speech and Language Studies (Dysphagia)	8	3	0	3	37.5%	3	3	0
	M.Phil. Linguistics (Full Time)	21	5	0	5	23.8%	5	5	0
	M.Phil. Linguistics (Part Time)	7	2	0	2	28.6%	2	2	0
MATHEMATICS	M.Sc. High Performance Computing	23	5	2	7	30.4%	6	5	1

MEDICINE	M.Sc. Sports and Exercise Medicine	28	13	0	13	46.4%	13	13	0
	M.Sc. Cardiology	14	7	0	7	50%	7	7	0
	M.Sc. Exercise Physiology	14	4	0	4	28.6%	4	4	0
	M.Sc. Health Services Management	21	7	1	8	38.1%	6	6	0
	M.Sc. Paediatrics	0	0	0	0	0%	0	0	0
	M.Sc. Molecular Pathology (Full Time)	13	0	0	0	0%	0	0	0
	M.Sc. Molecular Pathology (Part Time)	7	0	0	0	0%	0	0	0
	M.Sc. Occupational Therapy	3	0	0	0	0%	0	0	0
	M.Sc. Child & Adolescent Psychoanalytic Psychotherapy	24	0	0	0	0%	0	0	0
	M.Sc. Psychoanalytic Psychotherapy	29	0	0	0	0%	23	22	1
	M.Sc. Pharmaceutical Medicine	15	7	0	7	46.7%	7	7	0
	M.Sc. Cardiovascular Rehabilitation & Prevention (Part Time)	5	2	0	2	40%	3	3	0
	M.Sc. Medical Imaging	17	13	1	14	82.4%	13	13	0
	M.Sc. Global Health (Full Time)	46	8	6	14	30.4%	16	11	5
	M.Sc. Clinical Chemistry	10	4	1	5	50%	5	4	1
	M.Sc. Physical Sciences in Medicine (Full Time)	28	10	0	10	35.7%	11	11	0
	M.Sc. Health Informatics	47	0	0	0	0%	0	0	0
	M.Sc. Healthcare Infection Management	13	4	0	4	30.8%	4	4	0
	Postgraduate Diploma Clinical Engineering (Equipment Management)	1	0	0	0	0%	0	0	0
	M.Sc. Neuroscience	86	16	4	20	23.3%	17	13	4
	M.Sc. Respiratory Physiotherapy	4	2	0	2	50%	2	2	0
	Postgraduate Diploma Pharmaceutical Medicine	4	2	0	2	50%	1	1	0
	Postgraduate Diploma Cognitive Psychotherapy	44	16	0	16	36.4%	19	19	0
	Postgraduate Diploma Molecular Medicine	2	0	0	0	0%	0	0	0
	Postgraduate Diploma Gynaecology & Obstetrics	0	0	0	0	0%	0	0	0
M.Sc. Cognitive Psychotherapy (Full Time)	12	0	0	0	0%	0	0	0	

	M.Sc. Physical Sciences in Medicine (Part Time)	9	1	0	1	11.1%	0	0	0
	M.Sc. Molecular Medicine (Full Time)	71	22	1	23	32.4%	21	21	0
	M.Sc. Molecular Medicine (Part Time)	5	0	0	0	0%	0	0	0
	M.Sc. Cardiovascular Rehabilitation & Prevention (Full Time)	3	0	0	0	0%	0	0	0
	M.Sc. Global Health (Part Time)	13	5	1	6	46.2%	4	4	0
	M.Sc. Advanced Radiotherapy Practice	1	0	0	0	0%	0	0	0
	M.Sc. Advanced Radiotherapy Practice (Radiation Therapy Treatment Planning)	1	0	0	0	0%	0	0	0
	M.Sc. Biomedical Sciences (Intercalated)	17	15	0	15	88.2%	15	15	0
NATURAL SCIENCES	M.Sc. Biodiversity & Conservation	46	14	3	17	37%	16	13	3
	M.Sc. Environment and Development	57	4	6	10	17.5%	10	4	6
	M.Sc. In Development Practice	75	20	13	33	44%	25	16	9
	M.Sc. Environmental Sciences	46	16	2	18	39.1%	16	15	1
NURSING & MIDWIFERY	M.Sc. Nursing (Full Time)	19	1	0	1	5.3%	1	1	0
	M.Sc. Nursing (Part Time)	25	8	0	8	32%	10	10	0
	M.Sc. Midwifery (Full Time)	2	0	0	0	0%	0	0	0
	M.Sc. Midwifery (Part Time)	12	9	0	9	75%	9	9	0
	M.Sc. Gerontological Nursing (Part Time)	34	20	0	20	58.8%	19	19	0
	M.Sc. Mental Health (Part Time)	29	15	0	15	51.7%	16	16	0
	M.Sc. Mental Health (Full Time)	12	4	0	4	33.3%	3	3	0
	M.Sc. Palliative Care	14	6	1	7	50%	7	7	0
	M.Sc. In Dementia (Full Time)	25	17	0	17	68%	2	2	0
	M.Sc. In Dementia (Part Time)	5	2	0	2	40%	15	15	0
	Postgraduate Diploma Clinical Health Sciences Education	12	2	0	2	16.7%	2	2	0
	M.Sc. Cancer Care	11	5	0	5	45.5%	5	5	0
	Postgraduate Diploma Oncological Nursing (Full Time)	0	0	0	0	0%	0	0	0
	Postgraduate Diploma Specialist Nursing	20	0	0	0	0%	1	1	0
	Higher Diploma Children`s Nursing	60	11	1	12	20%	12	11	1

	M.Sc. Nursing (Child Health and Wellbeing)	6	5	0	5	83.3%	5	5	0
	M.Sc. Nursing (Child Health and Wellbeing)	2	0	0	0	0%	0	0	0
	M.Sc. Nursing (Specialist Nursing)	63	41	0	41	65.1%	38	38	0
	Higher Diploma Midwifery	0	0	0	0	0%	0	0	0
PHARMACY & PHARMACEUTICAL SCIENCES	M.Sc. Pharmaceutical Manufacturing Technology	0	0	0	0	0%	11	10	1
	M.Sc. Pharmaceutical Analysis (Full Time)	27	5	2	7	25.9%	7	6	1
	M.Sc. Pharmaceutical Analysis (Part Time)	2	0	0	0	0%	0	0	0
	M.Sc. Hospital Pharmacy	0	0	0	0	0%	0	0	0
	M.Sc. Community Pharmacy	3	3	0	3	100%	0	0	0
	M.Sc. Pharmaceutical Technology (Full Time)	23	1	2	3	13%	5	4	1
	Postgraduate Diploma Pharmaceutical Manufacturing Technology	0	0	0	0	0%	1	1	0
	Postgraduate Diploma Community Pharmacy	5	5	0	5	100%	7	7	0
PSYCHOLOGY	M.Sc. Applied Psychology (FT)	105	33	0	33	31.4%	31	31	0
	M.Sc. Applied Psychology (PT)	0	0	0	0	0%	0	0	0
	Postgraduate Diploma Clinical Supervision (Psychology)	0	0	0	0	0%	0	0	0
	Postgraduate Diploma Applied Behaviour Analysis	46	12	0	12	26.1%	8	8	0
	M.Sc. Applied Behaviour Analysis	13	0	0	0	0%	1	0	1
	Higher Diploma Psychology	62	20	0	20	32.3%	19	19	0
	M.Sc. Clinical Supervision	8	0	0	0	0%	0	0	0
	M.Sc. Psychology (Applied Behaviour Analysis)	25	7	1	8	32%	8	8	0
	M.Phil Psychoanalytic Studies	39	14	1	15	38.5%	12	10	2
	Doctoral Degree in Clinical Psychology	160	13	0	13	8.1%	15	15	0
	Professional Doctorate in Counselling Psychology	82	13	0	13	15.9%	14	14	0
	M.Sc. Psychoanalytic Psychotherapy	57	25	2	27	47.4%	0		

RELIGIONS, THEOLOGY AND ECUMENICS	M.Phil. International Peace Studies (Full Time)	116	28	19	47	40.5%	45	27	18
	M.Phil. International Peace Studies (Part Time)	10	1	1	2	20%	1	1	0
	M.Phil. Conflict Resolution & Reconciliation Studies (Full Time)	62	8	3	11	17.7%	9	5	4
	M.Phil. Conflict Resolution & Reconciliation Studies (Part Time - 2 years)	15	6	0	6	40%	5	5	0
	M.Phil. Conflict Resolution & Reconciliation Studies (Part Time - 3 years)	0	0	0	0	0%	0	0	0
	Bachelor in Divinity	0	0	0	0	0%	0	0	0
	Postgraduate Diploma Conflict & Dispute Resolution Studies	27	16	0	16	59.3%	0	0	0
	M.Phil. Intercultural Theology and Interreligious Studies (Full Time)	19	6	4	10	52.6%	10	5	5
	M.Phil. Intercultural Theology and Interreligious Studies (Part Time)	8	4	0	4	50%	4	4	0
	Masters in Theological Studies (Part Time) MODE A	11	8	0	8	72.7%	0	0	0
	Masters in Theological Studies (Part-Time) MODE B	5	4	0	4	80%	0	0	0
SOCIAL SCIENCES AND PHILOSOPHY	M.Sc. Economic Policy Studies	0	0	0	0	0%	0	0	0
	M.Sc. International Politics (Full Time)	95	19	6	25	26.3%	22	18	4
	M.Sc. International Politics (Part Time)	4	0	0	0	0%	0	0	0
	M.Sc. Economics (Full Time)	74	8	3	11	14.9%	9	6	3
	M.Sc. Economics (Part Time)	15	3	0	3	20%	4	4	0
	PG Diploma European Employment Studies (Full Time)	1	0	0	0	0%	0	0	0
	PG Diploma European Employment Studies (Part Time)	0	0	0	0	0%	0	0	0
	M.Sc. European Employment Studies (Full Time)	9	5	1	6	66.7%	5	4	1
	M.Sc. European Employment Studies (Part Time)	3	1	1	2	66.7%	1	1	0

	M. Phil Race, Ethnicity, Conflict	46	17	3	20	43.5%	20	17	3
	M.Sc. Comparative European Politics (Full Time)	3	0	0	0	0%	1	1	0
	M.Sc. Comparative European Politics (Part Time)	0	0	0	0	0%	0	0	0
	M.Sc. in Political Science	39	4	1	5	12.8%	5	4	1
SOCIAL WORK & POLICY	Postgraduate Diploma Child Protection & Welfare	32	14	0	14	43.8%	11	11	0
	M.Sc. Applied Social Research	49	17	3	20	40.8%	19	17	2
	M.Sc. In Disability Studies (Full Time)	28	6	0	6	21.4%	5	5	0
	M.Sc. In Disability Studies (Part Time)	9	1	0	1	11.1%	1	1	0
	M.Sc. Drug and Alcohol Policy	2	0	0	0	0%	0	0	0
	M.Sc. Child Protection & Welfare	8	0	0	0	0%	7	7	0
	Master in Social Work	169	23	1	24	14.2%	24	23	1
	M.Sc. Alcohol and Drug Interventions	15	0	0	0	0%	0	0	0
	M.Sc. Applied Social Research	13	8	1	9	69.2%	9	8	1
TOTAL		5917	1645	231	1876	31.7%	1725	1533	192

Appendix 9a: Research Student Funding Sources in 2011/12

Faculty Arts, Humanities, Social Sciences								
School	Total registered students	Fee status non EU	Total with funding /grant allocation	College Award (1252 or 1244)	9991 (miscellaneous account)	9995 (research account)	1018 (Government of Ireland Award)	Not funded
Business	43	5	19	7	3		1	24
Drama, Film & Music	49	5	23	3	7		1	26
Education	87	3	21	5	4		1	66
English	84	16	46	6	10		7	38
Histories & Humanities	123	24	72	12	12	1	19	51
Languages, Literatures & Cultural Studies	45	5	21	5	4		4	24
Law	97	7	39	6	5	1	4	58
Linguistic, Speech and Communication Sciences	50	4	22	3	3	5	1	28
Psychology	101	5	43	9	1	13		58
Religions, Theology & Ecumenics	70	16	24	2	3		3	46
Social Sciences & Philosophy	128	21	74	13	38	6	8	54
Social Work & Social Policy	42	3	16	3	2	4	2	26
FACULTY TOTAL	919	114	420	74	92	30	51	499

Faculty Engineering, Mathematics, Science									
School	Total registered students	Fee status non EU	Total with funding /grant allocation	College Award (1252 or 1244)	9991 (miscellaneous account)	9995 (research account)	1018 (Government of Ireland Award)	Not funded	
Biochemistry & Immunology	83	4	53	7	6	36	Not applicable in these schools	30	
Chemistry	105	10	66	9	6	44		39	
Computer Science and Statistics	177	39	92	16	6	53		85	
Engineering	208	23	111	16	11	63		97	
Genetics & Microbiology	71	7	39	9		27		32	
Mathematics	21		14	5		6		7	
Natural Sciences	115	12	57	13	6	29		1	58
Physics	117	23	83	12	1	58		Not applicable in this school	34
FACULTY TOTAL	897	118	515	87	36	316	1	382	

Faculty Health Sciences								
School	Total registered students	Fee status non EU	Total with funding /grant allocation	College Award (1252 or 1244)	9991 (miscellaneous account)	9995 (research account)	1018 (Government of Ireland Award)	Not funded
Dental Science	37	6	10	3	1		Not applicable in these schools	27
Medicine	257	14	121	19	13	79		136
Nursing & Midwifery	46		14	3	6	4		32
Pharmacy & Pharmaceutical Sciences	54	5	28	7	4	14		26
FACULTY TOTAL	394	25	173	32	24	97		221

Data extracted from live student file of all registered research students as at 31 January 2012.

Notes:

Data extracted from grant code field on students records. Current systems only permit one grant code to be populated per student.

Where student is in receipt of two funding sources only one is indicated in grant code field. For example student funded by college award and local authority grant - grant code field will be populated by local authority grant code only. Where there is one internal funding source and one external funding source (as in example above) college will always seek to claim fee amount from the external funding source.

Total with funding/grant allocation denotes students for whom grant code field is populated (ie fees are paid by funding body/account)

9991 code denotes departmental account from which fees are paid. Typically students funded through this source also receive stipend.

9995 code denotes research account. Typically students funded through research accounts also receive stipend.

Appendix 9b: Taught Postgraduate Student Funding Sources in 2011/12

Faculty Arts, Humanities, Social Sciences						
School	Course Title	Total students	Fee status non EU	Funded	Not funded	US Federal Loan Student
BUSINESS	M.Sc. Finance (Part Time)	17	1	0	16	1
	M.Sc. Finance (Full Time)	44	6	9	34	1
	M.Sc. International Management (Full Time)	17	2	4	13	
	M.Sc. International Management (Part Time)	1		1	0	
	M.Sc. Business and Management (Fulltime)	11		1	10	
School Total		90	9	15	73	2
DRAMA, FILM & MUSIC	M. Phil. Music & Media Technologies	12	0	12	0	
	Postgraduate Diploma Music & Media Technologies	18	0	18	0	
	M.Phil. Film Theory and History	12	1	2	9	1
	M.Phil. Theatre and Performance	12	6	3	6	3
	M.F.A. Playwriting	8	1	3	4	1
School Total		62	8	38	19	5
EDUCATION	M.Ed. - Aggression Studies (Part Time 2 years)	12		0	12	
	M.Ed. - Co-operative Learning (Part Time 2 years)	10	0	0	10	
	M.Ed. - Drama in Education (Full Time)	1		0	1	
	M.Ed. - Drama in Education (Part Time 2 years)	20	4		20	
	M.Ed. - Foundation Studies (Full Time)	6	3	5	1	

	M.Ed. - Foundation Studies (Part Time 2 years)	22	1	0	22	
	M.Ed. - Leadership and Management in Education (Full Time)	4	2		3	1
	M.Ed. - Leadership and Management in Education (PT 2 yrs)	47	1	0	47	
	M.Ed. - Leadership & Management in Education (PT 3 yrs)	7	0	0	7	
	M.Ed. - Positive Behaviour Management (Part Time 2 years)	14		0	14	
	M.Ed. - Special Educational Needs (Full Time)	1			1	
	M.Ed. - Special Educational Needs (Part Time 2 years)	22	1	1	21	
	M.Ed. - Teaching and Learning (Higher Education) Part Time 3 yrs	18		9	9	
	M.Ed. - One Year Thesis (Full Time)	25		0	25	
	Postgraduate Diploma in Education	118	0	22	96	
	School Total	327	12	37	289	1
ENGLISH	M.Phil. Irish Writing	14	7	1	10	3
	M.Phil. Creative Writing	16	5	1	14	1
	M.Phil Children's Literature	13	1	5	7	1
	M.Phil. Popular Literature	19	8	4	11	4
	M.Phil. Literatures of the Americas	6	1	1	5	
	M.Phil Digital Humanities & Culture (Full Time)	6	0	6	0	
	M.Phil Digital Humanities & Culture (Part Time)	3		3	0	
	School Total	77	22	21	47	9

HISTORIES & HUMANITIES	M.Phil. Medieval History	6	2	2	3	1
	M.Phil. Gender & Women`s Studies (Full Time)	7	1	3	4	
	M.Phil. Gender & Women`s Studies (Part Time)	2			2	
	M.Phil. Public History and Cultural Heritage (Full Time)	7		4	2	1
	M.Phil. Public History and Cultural Heritage (Part Time)	2			2	
	M.Phil. Irish Art History	12	1	2	9	1
	M.Phil. Early Modern History (Full Time)	8	1		7	1
	M.Phil. Modern Irish History	17	3	5	9	3
	M.Phil. Classics	8	4	3	3	2
School Total		69	12	19	41	9
LANGUAGES, LITERATURES & CULTURAL STUDIES	M.Phil. (Textual and Visual Studies)	7	3	0	7	
	M.Phil. Medieval Language, Literature & Culture	5	2		3	2
	M.Phil. Early Irish				0	
	M.Phil. Literary Translation	12	2	5	7	
	M.Phil. Comparative Literature	8	4	1	6	1
	M.Phil. German Literature with Language Pedagogy (Full Time)				0	
	Postgraduate Diploma Old Irish (Full Time)	3	1		2	1
	M.Phil. German Literature with Language Pedagogy (Part Time)				0	
	M.Phil. European Studies	16	3	2	13	1
School Total		51	15	8	38	5

LAW	LL.M. (Master in Laws)	81	5	20	61	
	LL.M. (International and Comparative Law)	7	2		7	
	LL.M. (International and European Business Law)	19	1	3	16	
School Total		107	8	23	84	0
LINGUISTIC, SPEECH & COMMUNICATION SCIENCES	M.Phil. (Applied Linguistics) (Full Time)	3			3	
	M.Phil. (Applied Linguistics) (Part Time)	5	1	1	4	
	M.Phil. (Speech and Language Processing) (Full Time)	2	0	2	0	
	M.Phil. (Speech and Language Processing) (Part Time)	1	0	1	0	
	M.Phil. English Language Teaching	5	1	2	3	0
	M.Sc. Clinical Speech & Language Studies	13	1		13	
	Postgraduate Diploma Clinical Speech and Language Studies (Dysphagia)	3			3	
	M.Phil. Linguistics (Full Time)	5	0	5	0	
	M.Phil. Linguistics (Part Time)	5	0	1	4	
School Total		42	3	12	30	0
PSYCHOLOGY	M.Sc. Applied Psychology (FT)	31		10	21	
	Postgraduate Diploma Applied Behaviour Analysis	8		1	7	
	M.Sc. Applied Behaviour Analysis				0	
	Higher Diploma Psychology	39		15	24	

	M.Sc. Psychology (Applied Behaviour Analysis)	9	1	2	7	
School Total		87	1	28	59	0
RELIGIONS, THEOLOGY AND ECUMENICS	M.Phil. International Peace Studies (Full Time)	45	18	13	24	8
	M.Phil. International Peace Studies (Part Time)	3	1		3	
	M.Phil. Conflict Resolution & Reconciliation Studies (Full Time)	9	4	1	5	3
	M.Phil. Conflict Resolution & Reconciliation Studies (Part Time - 2 years)	6			6	
	Postgraduate Diploma Conflict & Dispute Resolution Studies	15		1	14	
	M.Phil. Intercultural Theology and Interreligious Studies (Full Time)	10	5	4	2	4
	M.Phil. Intercultural Theology and Interreligious Studies (Part Time)	5			5	
	Masters in Theological Studies (Part Time) MODE A	31		31	All students funded by CITI	
	Masters in Theological Studies (Part-Time) MODE B	10		10	All students funded by CITI	
School Total		134	28	60	59	15
SOCIAL SCIENCES AND PHILOSOPHY	M.Sc. Economic Policy Studies	14		1	13	
	M.Sc. International Politics (Full Time)	22	4	4	15	3
	M.Sc. Political Science	5	1	1	4	
	M.Sc. Economics (Full Time)	9	3	3	5	1
	M.Sc. Economics (Part Time)	7			7	

	M.Sc. European Employment Studies (Full Time)	5	1	1	4	
	M.Sc. European Employment Studies (Part Time)	1			1	
	M. Phil Race, Ethnicity, Conflict	20	3	8	12	
	M.Sc. Comparative European Politics (Full Time)	1		1	0	
	M.Phil. Psychoanalytic Studies	12	2	3	8	1
School Total		96	14	22	69	5
SOCIAL WORK AND SOCIAL POLICY	M.Sc. Applied Social Research	9	1		9	
	M.Sc. In Disability Studies (Full Time)	5		1	4	
	M.Sc. In Disability Studies (Part Time)	5			5	
	M.Sc. Drug and Alcohol Policy	8			8	
	M.Sc. Child Protection & Welfare	7		1	6	
	Master in Social Work	48	2	24	22	2
	Postgraduate Diploma Child Protection & Welfare	11		5	6	
School Total		93	3	31	60	2
FACULTY TOTAL		1235	135	314	869	52

Faculty Engineering, Mathematics, Science

School	Course Title	Total students	Fee status non EU	Funded	Not funded	US Federal Loan Student
COMPUTER SCIENCE AND STATISTICS	M.Sc. Management of Information Systems	55	1	1	54	
	M.Sc. Interactive Digital Media	20	1	17	3	
	M.Sc. Computer Science (Networks & Distributed Systems)	15	7	8	7	
	M.Sc. Computer Science Mobile & Ubiquitous Computing	8	3	6	2	
	M.Sc. Technology & Learning	50	0	50	0	
	M.Sc. Computer Science (Interactive Entertainment Technology)	22	3	19	3	
	M.Sc. Health Informatics	33		33	0	
	Postgraduate Diploma in Statistics	36	0	8	28	
School Total		239	15	142	97	0
ENGINEERING	M.Sc. Bioengineering (Full Time)	20	6	14	6	
	M.Sc. Bioengineering (Part Time)	1		1	0	
	M.Sc. Engineering (Environmental) (Full Time)	17	1	7	10	
	M.Sc. Engineering (Environmental) (Part Time)	1			1	
	M.Sc. Engineering (Structural and Geotechnical)	9	1	4	5	
	M.Sc. Engineering (Transportation)	2			2	
	Postgraduate Diploma Highway and Geotechnical Engineering	1			1	

	M.Sc. Civil Engineering (Full Time)	1		1	0	
	Postgraduate Diploma Construction Law & Contract Administration	25		1	24	
	Postgraduate Diploma Fire Safety Practice	9		3	6	
	Postgraduate Diploma Project Management	25			25	
	Postgraduate Diploma Environmental Engineering	21		1	20	
	Postgraduate Diploma Health and Safety Construction	8			8	
	Postgraduate Diploma Applied Building Repair & Conservation	14			14	
School Total		154	8	32	122	0
MATHEMATICS	M.Sc. High Performance Computing	6	1	1	5	
School Total		6	1	1	5	0
NATURAL SCIENCES	M.Sc. Biodiversity & Conservation	16	3	3	12	1
	M.Sc. Environment and Development	10	6	4	4	2
	M.Sc. In Development Practice	44	14	15	25	4
	M.Sc. Environmental Sciences	16	1	3	12	1
School Total		86	24	25	53	8
FACULTY TOTAL		496	48	201	287	8

Faculty Health Sciences						
School	Course Title	Total students	Fee status non EU	Funded	Not funded	US Federal Loan Student
DENTAL SCIENCE	Postgraduate Diploma Conscious Sedation Dentistry	8	1	1	7	
	Postgraduate Diploma Special Care Dentistry	6		5	1	
	Clinical Dentistry (P.Grad.Dip)	17	0	16	1	
School Total		31	1	22	9	
MEDICINE	M.Sc. Sports and Exercise Medicine	13	0	4	9	
	M.Sc. Cardiology	7			7	
	M.Sc. Exercise Physiology	6	1		6	
	M.Sc. Health Services Management	19		6	13	
	M.Sc. Occupational Therapy	4			4	
	M.Sc. Psychoanalytic Psychotherapy	23	1	1	22	
	M.Sc. Pharmaceutical Medicine	14	0		14	
	M.Sc. Cardiovascular Rehabilitation & Prevention (Part Time)	4			4	
	M.Sc. Medical Imaging	13			13	
	M.Sc. Global Health (Full Time)	16	5	3	13	
	M.Sc. Global Health (Part time)	5			5	
	M.Sc. Clinical Chemistry	13	1	1	12	
	M.Sc. Physical Sciences in Medicine (Full Time)	11		4	7	
	M.Sc. Health Informatics	33		33	0	

	M.Sc. Healthcare Infection Management	4			4	
	M.Sc. Neuroscience	18	4	4	13	1
	M.Sc. Respiratory Physiotherapy	2			2	
	Postgraduate Diploma Pharmaceutical Medicine	2			2	
	Postgraduate Diploma Cognitive Psychotherapy	19		10	9	
	M.Sc. Molecular Medicine (Full Time)	21		12	9	
	M.Sc. Molecular Medicine (Part Time)	3			3	
	M.Sc. Biomedical Sciences (Intercalated)	15		7	8	
	School Total	265	12	85	179	1
NURSING & MIDWIFERY	M.Sc. Nursing (Full Time)	1			1	
	M.Sc. Nursing (Part Time)	18		4	14	
	M.Sc. Nursing (Child Health and Wellbeing) (Part Time)	5		3	2	
	M.Sc. Nursing (Specialist Nursing) (Part Time)	38		38	0	
	M.Sc. Midwifery (Part Time)	10		5	5	
	M.Sc. Gerontological Nursing (Part Time)	26		10	16	
	M.Sc. Mental Health (Part Time)	27		9	18	
	M.Sc. Mental Health (Full Time)	3		3	0	
	M.Sc. Palliative Care	15			15	
	M.Sc. In Dementia (Full Time)	2		1	1	
	M.Sc. In Dementia (Part Time)	21		5	16	

Postgraduate Diploma Clinical Health Sciences Education	2			2	
M.Sc. Cancer Care	8		6	2	
Postgraduate Diploma Specialist Nursing	1			1	
Higher Diploma Children's Nursing	12	1	12	0	
Higher Diploma Midwifery	45	2	15	30	
School Total	234	3	111	123	0
FACULTY TOTAL	530	16	218	311	1

Data extracted from live student file of all registered research students as at 31 January 2012.

Notes:

Data extracted from grant code field on students records.



Denotes course subsidised under ATS scheme. Eligible EU students pay greatly reduced tuition fees.



Denotes course with tuition fee paid wholly by Health Service Provider.