

University of Dublin



Trinity College

**Dean of Graduate Studies' Annual Report
2009/10
for
University Council on 20th April, 2011**

*including
Postgraduate Admissions Data for 2010/11*

**Professor Veronica Campbell
Dean of Graduate Studies**

Contents

	Page
1. Introduction	3
2. Graduate Studies Office	3
3. Graduate Studies Committee	5
4. New Course Proposals	6
5. Processing and Admissions: Postgraduate Student and Course Numbers	7
6. Taught Postgraduate Courses – Overview of Student Numbers	15
7. Maintenance of Academic Quality	16
8. College Awards	18
9. Travel Grants	19
10. Publications	19
11. Other Reporting Items	20
12. Postgraduate Admissions Data 2010/11	22

List of Tables, Figures and Appendices

Tables

		Page
Table 1	Postgraduate new entrants and total registered graduate students from 2002/03	7
Table 2	Postgraduate student numbers from 1994/95 by category	8
Table 3	Breakdown of students by gender on Research, Masters and Postgraduate Diploma courses registered from 2004/05	10
Table 4	Breakdown of research students by gender and Faculty Grouping in 2005/06, 2006/07, 2007/08, 2008/09 & 2009/10	11
Table 5	Breakdown of Taught Masters students by gender and Faculty Grouping in 2005/06, 2006/07, 2007/08, 2008/09 & 2009/10	12
Table 6	Breakdown of Postgraduate Diploma students by gender and Faculty Grouping in 2005/06, 2006/07, 2007/08, 2008/09 & 2009/10	13
Table 7	Overview of Student Numbers on Postgraduate Taught Courses	15
Table 8	Applications for College research awards from 2006/07 to 2009/10	18
Table 9	Travel grant applications and reimbursements in 2009/10	19

Figures

Figure 1	Annual increases of full-time and part-time students from 1993/94	9
Figure 2	Number of Taught Masters and Postgraduate Diploma courses from 1994/95	14
Figure 3	Examination period (in terms of months) of research theses inclusive of 25 theses referred for major revision	17

Appendices

Appendix 1	Taught Postgraduate Courses – Student Numbers 2005/06 to 2010/11	24
Appendix 2	Results of approved Research and Professional Degree Examinations (by degree) for the past three years	32
Appendix 3	Number of research degrees awarded by Faculty Grouping and degree in 2009/10	33
Appendix 4	Nationality of students in 2008/09 and 2009/10	34
Appendix 5	List of external examiners for research degrees by Faculty in 2009/10	37
Appendix 6	List of Taught Course External Examiners by Faculty in 2009/10	48
Appendix 7	Applications to the research register for entry in 2010/11	54
Appendix 8	Applications to the postgraduate taught courses by School for entry in 2010/11	55

1. Introduction

The purpose of this annual report to the University Council is threefold:

- (i) to provide the University Council, and the wider College community, with the statistical information needed to make informed policy decisions about graduate education in the College,
- (ii) to report on the work of the Graduate Studies Office, and
- (iii) to make the required statutory reports to University Council regarding examiners appointed for higher degrees.

Statistical data cover the period 2009/10, and postgraduate admissions data cover the period from September 2010 to the 20th March 2011.

Once approved by Council, this report will be posted on the Graduate Studies Office Website at http://www.tcd.ie/Graduate_Studies/

2. Graduate Studies Office

The Dean of Graduate Studies is head of the Graduate Studies Office (GSO). The Dean is supported by two Administrative Officers, one Senior Executive Officer and four Executive Officers.

The Dean of Graduate Studies has statutory responsibility for admitting all postgraduate students and administering the regulations regarding their academic progression and examination. The Graduate Studies Office (GSO) acts as the central coordinating office for postgraduate education in College.

Responsibilities of the Dean of Graduate Studies supported by the Graduate Studies Office include:

Development of Graduate Education Policy

This is achieved by

- (a) Convening the Graduate Studies Committee consisting of all the Directors of Teaching and Learning (Postgraduate) in the Schools, Keeper of Readers' Services, the MIS Manager, President and Vice President of the Graduate Students' Union, and bringing before it matters of importance relating to graduate education including changes to the regulations concerning higher degrees (see *University Calendar Part 2* page 10 for the Terms of Reference of the Graduate Studies Committee);
- (b) Attending national and international *fora* (e.g. Irish Universities Association, European Universities Association, Coimbra Group Taskforce meetings) and using this information to develop discussion papers on matters of importance for developments in graduate education;
- (c) Representing the graduate education function on College committees and compiling and interpreting information regarding graduate education for such committees;
- (d) Updating and revising procedures of admission, progression and examination, and making the required changes to the *University Calendar Part 2*;

Administration of postgraduate courses

There are some 183 separate courses of study at postgraduate level in the College. These are administered by the GSO and Schools. Administrative tasks include

- (a) Providing specialist advice and assistance to Schools in the development of new postgraduate courses. Specifically, the GSO staff ensure that proposed admissions criteria adhere to the College regulations, that the ECTS values apportioned to modules are correct, that proposed entries comply with the *University Calendar Part 2* regulations and the *Prospectus*, and that the documentation prepared for the Graduate Studies Committee and the University Council is complete;
- (b) Liaising with the College community to produce the annual *Postgraduate Prospectus*;
- (c) Dealing with initial enquiries about postgraduate programmes both in the areas of research and taught (Masters and Postgraduate Diploma) courses;
- (d) Monitoring the quality of taught postgraduate courses by reviewing and distributing course examiners' reports and ensuring that recommendations are acted on;
- (e) Assisting the Quality Office with reviewing taught postgraduate programmes as part of the School review process, and also initiating occasional course reviews outside the normal process when required;
- (f) Promoting the College's postgraduate programmes through advertisement and attendance at national and international career exhibitions and fairs.

Provision of services for graduate students

- (a) Setting and monitoring the quality of graduate admissions to the College. All students are admitted to the University by the Dean of Graduate Studies *via* one of two postgraduate admission routes:
 - i. On-line admissions facility *via* the Postgraduate Applications Centre (PAC)
 - ii. Direct admissions: the GSO receives and processes applications for admission liaising with Directors of Teaching and Learning (Postgraduate) in the Schools for research students and the Course Directors for admission to taught programmes.
- (b) Setting regulations for students' academic progress and monitoring these regulations, e.g. transfer from the Masters to Ph.D. register, confirmation on the Ph.D. register, time on the research register;
- (c) Attending to postgraduate student 'cases' in correspondence with the student, the Course Director, the supervisor, or the Director of Teaching and Learning (Postgraduate) (DTLP);
- (d) Processing research thesis submissions and appointment of external examiners for taught courses and research degrees;
- (e) Receiving and reviewing examination results, distributing examiners reports, and convening of appeals by Academic Appeals Committee for Graduate Students (which is a sub-committee of the Graduate Studies Committee);
- (f) Preparing documentation for the Sub-committee of Board and Council for the approval of higher degrees.

3. Graduate Studies Committee

The Graduate Studies Committee (GSC) normally meets monthly during statutory term. The composition of the Graduate Studies Committee is listed in the *University Calendar Part 2*.

In 2009/10 there were eight meetings of the GSC. Minutes of the GSC are available *via* the Trinity College Local Home Page¹.

During 2009/10 the Committee discussed the following issues of interest to the general postgraduate community in College:

- **Trinity Inclusive Curriculum (22/10/09/007)**
The Committee was provided with details of the Inclusive Curriculum Project which aims to mainstream inclusive principles within the entire College curricula so as to enable students from non-traditional learning backgrounds to participate more fully in the academic life of College. The Committee was made aware of the self-evaluation tool being and website being created.
- **Bologna Progress Report (17/12/09/015)**
The Committee was updated on the progress of the Learning Outcomes Project and informed that 80% of the material had been obtained but some learning outcomes were still outstanding and the process was due to be completed by the end of the 2009/2010 academic year.
- **Regulation Changes (17/12/09/016) (22/04/10/037) (17/06/10/048)**
The Committee discussed and approved a number of Calendar Part 2 changes, including: eligibility to supervise research students; eligibility of internal and external examiners; re-examination of theses; provision for internships on College Awards.
- **Vision for Student Management (21/01/10/021)**
The Committee was updated on the progress of the eStrategy and informed that three vendors have been selected and a competitive dialogue is taking place. Following this a vendor will be selected and the implementation of the new system will take place.
- **Update on Working Group on Postgraduate Modularisation (18/02/10/025)**
The Committee discussed recommendations that had been drawn up by the Working Group on Postgraduate Modularisation.
- **Joint USC/GSC Taskforce on International Student Recruitment (18/02/10/026) (17/06/10/046)**
The Committee discussed and supported the recommendations made by the Taskforce on International Student Recruitment which had been set up to consider ways of removing "road-blocks" to the recruitment of non-EU students in

¹ http://www.tcd.ie/Graduate_Studies/staff/committee/committeepapers/index.php

order to (i) increase cultural diversity in College and (ii) increase non-exchequer income stream.

- **Draft Collaborative Agreement Framework with UCD (20/05/10/041)**
The Committee discussed the Inter-Institutional Agreement that had been drafted to form a specific agreement for joint programmes with UCD. The agreement is designed to address the relevant legal, technical, administrative and operational issues.
- **Innovation Academy Diploma/Certificate in Innovation and Entrepreneurship (20/05/09/042)**
The Committee discussed and approved two modules developed towards the Innovation and Entrepreneurship diploma/certificate which is part of the Innovation Academy programme.

4. New Course Proposals

In 2009/10 the Graduate Studies Committee discussed and recommended the following nine new course proposals, seven of which were subsequently approved by the University Council to commence in September 2010 (unless indicated otherwise):

- M.Sc. in Healthcare Infection Management
- M.Phil. in Intercultural Theology and Interreligious Studies
- M.Phil. in Conflict Resolution and Reconciliation
- M.Sc. in International Politics
- M.Sc. in European Employment Studies
- M.Sc. in Development Practice
- M.Sc. in Dementia
- M.Sc. in Disability Studies
- Master in Fine Art (to commence in September 2011)

5. Processing and Admissions: Postgraduate Student and Course Numbers

As the first point of contact for all postgraduate students, the GSO advises all incoming students with regard to registration, financial information on fee payment, and immigration requirements (for non-EU applicants). The GSO organises the Orientation Meeting for new postgraduate students where they are advised on services available to them in College.

There have been approximately 22,000 enquiries per year over the past three years, either directly to the office over the phone or by email. In 2009/10, the Graduate Studies Office processed 6469 applications for postgraduate admission, and approximately 950 applications were submitted directly to Schools. There has been a consistent increase in the number of postgraduate students registered over the last eight years (Table 1).

In 2007/08 32.5% of all students were graduate students compared to 32.1% in 2008/09, and 31.7% in 2009/10. Despite this decrease, almost one in three students in Trinity is a postgraduate student.

	2002/03	2003/04	2004/05	2005/06	2006/07	2007/08	2008/09	2009/10
All new entrants to postgraduate register	2,432	2,269	2,363	2,411	2,572	2,729	2,858	2928
New entrants – first time in TCD	2,103	1,964	1,982	2,026	2,117	2,270	2,358	2431
Total number registered for that year	4,193	4,207	4,298	4,531	4,803	5,036	5,206	5,335
Increase on previous year in terms of registered	374	14	91	233	272	233	170	129
% increase on previous year	9.7%	0.33%	2.2%	5.4%	6.0%	4.9%	3.4%	2.5%

Table 1. Postgraduate new entrants and total registered graduate students from 2002/03

The breakdown of postgraduate student numbers in the three major classes of research, taught and postgraduate diplomas is presented in Table 2.

Year	Research			Taught Masters			PG Diploma			Total PGs		
	f/t	p/t	total	f/t	p/t	total	f/t	p/t	total	f/t	p/t	total
1994/95	1043	132	1175	398	155	553	159	276	435	1600	563	2163
1995/96	1056	127	1183	393	195	588	139	330	469	1588	652	2240
1996/97	1069	137	1206	361	242	603	159	393	552	1589	772	2361
1997/98	1060	185	1245	483	340	823	145	419	564	1688	944	2632
1998/99	1130	178	1308	474	379	853	234	776	1010	1838	1333	3171
1999/00	1221	196	1417	474	420	894	170	1186	1356	1865	1802	3667
2000/01	1161	186	1347	467	443	910	247	1085	1332	1875	1714	3589
2001/02	1226	207	1433	509	499	1008	235	1143	1378	1970	1849	3819
2002/03	1306	184	1490	579	572	1151	517	1035	1552	2402	1791	4193
2003/04	1391	139	1530	607	704	1311	564	802	1366	2562	1645	4207
2004/05	1491	220	1711	673	706	1379	513	695	1208	2677	1621	4298
2005/06	1533	248	1781	734	710	1444	437	869	1306	2704	1827	4531
2006/07	1600	275	1875	740	707	1447	484	997	1481	2824	1979	4803
2007/08	1662	284	1946	740	807	1547	477	1066	1543	2879	2157	5036
2008/09	1783	306	2089	783	890	1673	453	991	1444	3019	2187	5206
2009/10	1962	315	2277	914	870	1784	455	819	1274	3331	2004	5335

Table 2. Postgraduate student numbers from 1994/1995 by category

The following conclusions can be drawn from Table 2:

- The number of postgraduate research students in both categories (full-time and part-time) has increased by 188 registered students in comparison to 2008/09.
- Research students constitute 42.7% of all postgraduate students in 2009/10 compared to 40.1% in 2008/09 and 38.6% in 2007/08.
- Research students make up 13.5% of the total student body of 16,807 which is a slight increase on 12.9% in 2008/09 and 12.4% in 2007/08.
- Of the 3,058 students registered for taught courses in 2009/10, 1,784 (33.4% of all graduate students) were undertaking a Masters degree and 1,274 (23.8%) were registered for a Postgraduate Diploma compared to 1,673 (32.1%) on a Masters degree and 1,444 (27.7%) on a Postgraduate Diploma in 2008/09, and 1,547 (30.7%) and 1,543 (30.6%) respectively in 2007/08.
- Part-time student numbers decreased slightly further in 2009/10 to 2,004 with 37.5% of all postgraduate students registering for part-time study in comparison to 42% in 2008/09 and 42.8% in 2007/08. As in the previous two years, the majority of part-time students were undertaking Taught Masters and Postgraduate Diploma courses while the number of part-time research students was relatively low by comparison at 315. This number, however, has increased from 306 and 284 registered students in 2008/09 and 2007/08 respectively.

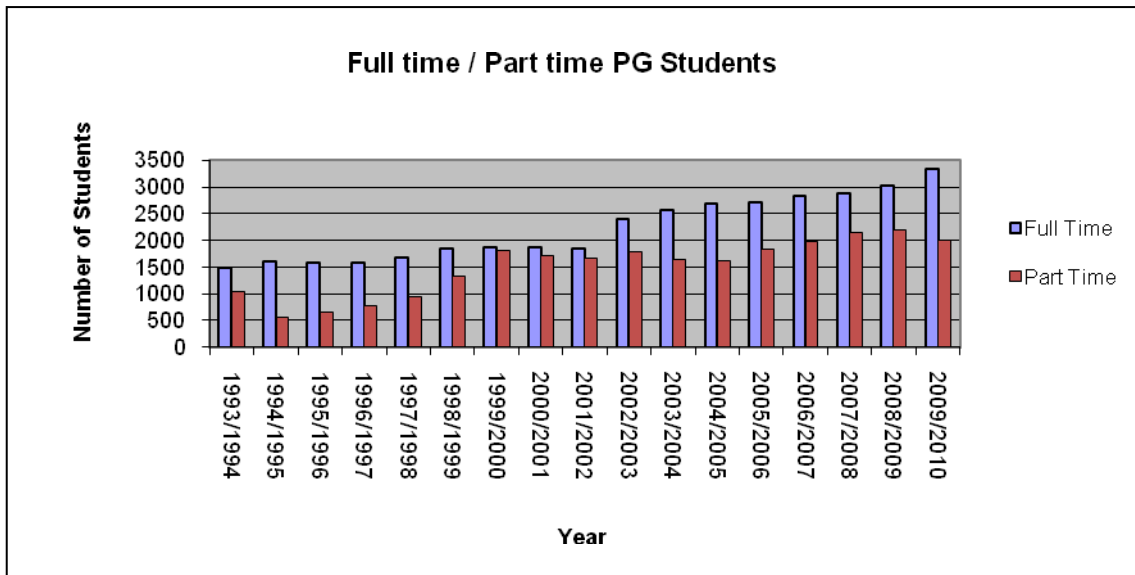


Figure 1. Annual increases of full-time and part-time students from 1993/94

Figure 1 illustrates that from the year 1999/00, when it increased significantly to 1,802, the overall annual number of registered part-time students fluctuated only slightly and remained within the same range.

Appendix 4 provides comparative data for students' nationality for 2009/10 and 2008/09.

Of all the 5,335 students registered in 2009/10

- 105 (2%) came from Africa compared to 87 (1.7%) out of 5,206 in 2008/09 resulting in an annual increase of 18 students,
- 234 (4.4%) came from Asia compared to 218 (4.2%) in 2008/09 resulting in an annual increase of 16 students,
- 12 (0.2%) came from Australia and New Zealand compared to 11 (0.2%) in 2008/09 i.e. an annual increase of one student,
- 252 (4.7%) came from North and Central America compared to 228 (4.4%) in 2008/09 i.e. an annual increase of 24 students
- 665 (12.5%) came from the EU countries compared to 642 (12.3%) in 2008/09 with an increase of 23 students,
- 39 (0.7%) came from the non EU countries in Europe compared to 48 (0.9%) in 2008/09 with a decrease of nine students.
- There are 13 countries from which at least 20 students came to study in Trinity in 2009/10 (12 in 2008/09) i.e. Great Britain (196, 207 in 2008/09), the United States of America (195, 177 in 2008/09), Germany (88, 79 in 2008/09), Italy (82, 74 in 2008/09), Poland (70, 71 in 2008/09), India (65, 58 in 2008/09), China (62, 60 in 2008/09), Canada (46, 40 in 2008/09), France (46, 36 in 2008/09), Spain (42, 39 in 2008/09), Nigeria (35, 23 in 2008/09), Greece (27, 30 in 2008/09) and Pakistan (21, 11 in 2008/09). These 975 (888 students in 2008/09) represent 18.3% of total postgraduate students.

Table 3 below shows the breakdown of students by gender registered on Research, Masters and Postgraduate Diploma programmes in 2009/10 indicating that while the overall number of male students had increased again, in proportion to the overall number of registered students, there was a slight decrease in the number male students in 2009/10. The overall male/female ratio in 2009/10 is 2:3.

	Male					Female					Total				
	09/10	08/09	07/08	06/07	05/06	09/10	08/09	07/08	06/07	05/06	09/10	08/09	07/08	06/07	05/06
Research	1124	1028	932	907	900	1153	1061	1014	968	881	2277	2089	1946	1875	1781
Taught Master	721	698	610	577	627	1063	975	937	870	817	1784	1673	1547	1447	1444
Postgraduate Diplomas	398	473	504	438	393	876	971	1039	1043	913	1274	1444	1543	1481	1306
Total	2243	2199	2046	1922	1920	3092	3007	2990	2881	2611	5335	5206	5036	4803	4531
Total Percentage	42%	42.2%	40.6%	40%	42.4%	58%	57.8%	59.3%	60%	57.6%	100%	100%	100%	100%	100%

Table 3. Breakdown of students by gender on Research, Masters and Postgraduate Diploma courses registered from 2005/06

Tables 4-6 (below) illustrate a breakdown of student numbers between three Faculty Groupings, and the data illustrates that

- The number of female research students has increased by 92 (over 7.8%) in comparison to the previous year whereas the number of males by 96 students (8.5%),
- the highest percentage of male research students i.e. 52.8% (593 out of all registered research males in 2009/10), compared to 52.7% (542 students in 2008/09) are registered in Engineering, Mathematics and Science,
- the highest percentage of female research students i.e. 43.9% (506 out of all registered research females in 2009/10), compared to 44.5% (472 students in 2008/09), are registered in Arts, Humanities and Social Sciences,
- overall, fewer males than females register on taught courses; however, there has been an increase of 23 male students from 698 in 2008/09 to 721 registered on the Masters degree courses, which can be compared to the corresponding increase by 83 females from 975 to 1063 with the majority of that increase (58 students) registered in Health Sciences,
- With respect to Postgraduate Diploma students, the overall number of males decreased in 2009/10 from 473 to 398. A significant difference here however lies in the fact that more than twice as many females (876) registered on a postgraduate diploma course than males (398) in 2009/10. The number of females has also decreased by 95 students i.e. 10.8% from 2008/09.

FACULTY GROUPING	Research: Males										Research: Females									
	2005/06		2006/07		2007/08		2008/09		2009/10		2005/06		2006/07		2007/08		2008/09		2009/10	
	ft	pt	ft	pt	ft	pt	ft	pt	ft	pt	ft	pt	ft	pt	ft	pt	ft	pt	ft	pt
ARTS, HUMANITIES & SOCIAL SCIENCES	247	49	252	55	247	58	270	64	293	58	348	51	371	70	398	72	405	67	441	65
ENGINEERING, MATHEMATICS & SCIENCE	468	38	457	35	460	36	502	40	548	45	273	12	288	17	291	12	304	12	330	14
HEALTH SCIENCES	63	35	74	34	93	38	107	45	121	59	134	63	158	64	173	68	195	78	229	74
<i>sub-totals</i>	<i>778</i>	<i>122</i>	<i>783</i>	<i>124</i>	<i>800</i>	<i>132</i>	<i>879</i>	<i>149</i>	<i>962</i>	<i>162</i>	<i>755</i>	<i>126</i>	<i>817</i>	<i>151</i>	<i>862</i>	<i>152</i>	<i>904</i>	<i>157</i>	<i>1000</i>	<i>153</i>
<i>Totals</i>	<i>900</i>		<i>907</i>		<i>932</i>		<i>1028</i>		<i>1124</i>		<i>881</i>		<i>968</i>		<i>1014</i>		<i>1061</i>		<i>1153</i>	

0506 Research: M/F 900/881 [1:0.98]

0607 Research: M/F 907/968 [1:1.06]

0708 Research: M/F 932/1014 [1:1.08]

0809 Research: M/F 1028/1061 [1:1.03]

0910 Research: M/F 1124/1153 [1:1.02]

Table 4. Breakdown of Research students by gender and Faculty Grouping in 2005/06, 2006/07, 2007/08, 2008/09 and 2009/10

FACULTY GROUPING	Taught Masters: Males										Taught Masters: Females									
	2005/06		2006/07		2007/08		2008/09		2009/10		2005/06		2006/07		2007/08		2008/09		2009/10	
	ft	pt	ft	pt	ft	pt	ft	pt	ft	pt	ft	pt	ft	pt	ft	pt	ft	pt	ft	pt
ARTS, HUMANITIES & SOCIAL SCIENCES	176	139	179	121	163	130	185	151	210	128	335	130	349	158	341	206	372	205	411	203
ENGINEERING, MATHEMATICS & SCIENCE	104	101	88	100	113	103	104	142	130	100	36	56	44	62	44	59	43	66	58	44
HEALTH SCIENCES	46	61	33	56	29	72	36	80	45	108	37	223	47	210	50	237	43	246	60	287
<i>sub-totals</i>	326	301	300	277	305	305	325	373	385	336	408	409	440	430	435	502	458	517	529	534
<i>Totals</i>	627		577		610		698		721		817		870		937		975		1063	

0506 Taught Masters: M/F 627/817 [1:1.3]

0607 Taught Masters: M/F 577/870 [1:1.5]

0708 Taught Masters: M/F 610/937 [1:1.5]

0809 Taught Masters: M/F 698/975 [1:1.4]

0910 Taught Masters: M/F 721/1063 [1:1.5]

Table 5. Breakdown of Taught Masters students by gender and Faculty Grouping in 2005/06, 2006/07, 2007/08, 2008/09 and 2009/10

FACULTY GROUPING	Postgraduate Diploma: Males										Postgraduate Diploma: Females									
	2005/06		2006/07		2007/08		2008/09		2009/10		2005/06		2006/07		2007/08		2008/09		2009/10	
	ft	pt	ft	pt	ft	pt	ft	pt	ft	pt	ft	pt	ft	pt	ft	pt	ft	pt	ft	pt
ARTS, HUMANITIES & SOCIAL SCIENCES	59	103	66	150	73	159	89	146	74	116	166	387	196	504	227	513	249	489	261	398
ENGINEERING, MATHEMATICS & SCIENCE	14	150	18	154	18	163	12	182	11	156	5	67	7	66	11	68	4	67	2	61
HEALTH SCIENCES	15	52	13	37	15	40	4	40	9	32	178	110	184	86	170	86	95	67	98	56
<i>sub-totals</i>	88	305	97	341	106	362	105	368	94	304	349	564	387	656	408	667	348	623	361	515
<i>Totals</i>	393		438		468		473		398		913		1043		1075		971		876	

0506 Diplomas: M/F 393/913 [1:2.3]

0607 Diplomas: M/F 438/1043 [1:2.4]

0708 Diplomas: M/F 468/1075 [1:2.3]

0809 Diplomas: M/F 453/991 [1:2.2]

0910 Diplomas: M/F 398/876 [1:2.2]

*Table 6. Breakdown of **Postgraduate Diploma** students by gender and Faculty Grouping in 2005/06, 2006/07, 2007/08, 2008/09 and 2009/10*

Postgraduate Taught Courses

The number of postgraduate taught courses continues to rise steadily (Fig. 2 shows this graphically). There were 183 separate courses of study in 2009/10, which is an overall increase of nine new courses from 174 in 2008/09, and an increase of 16 on the 2007/08 offering. The number of taught programmes has increased by 58% over the past ten years. Occasionally, entry to some courses may be suspended for a given year for academic or resource-related reasons. Additionally, some courses only intake on a bi-annual basis.

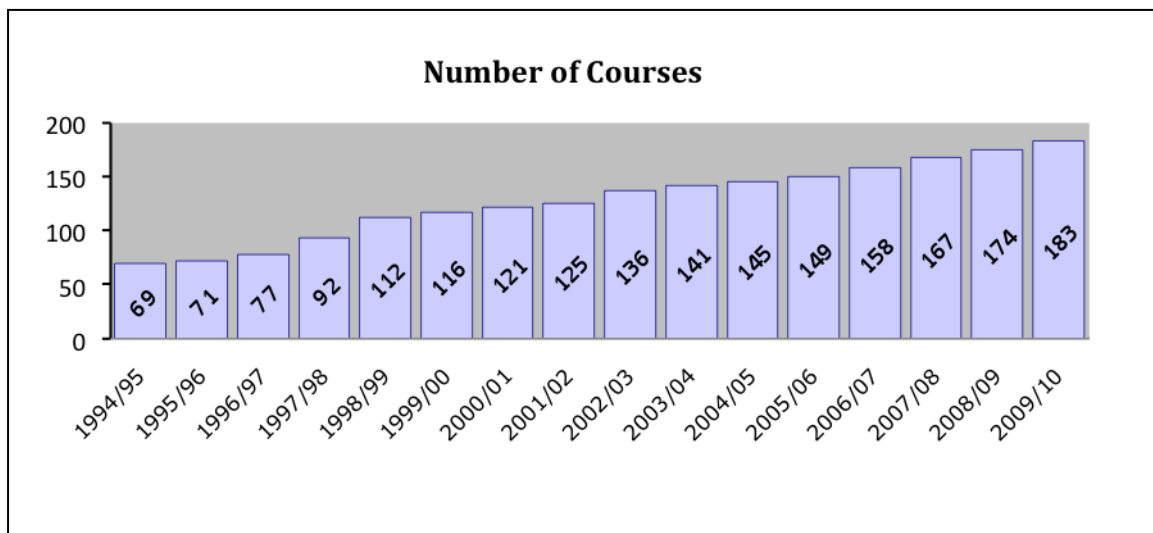


Figure 2. Number of Taught Masters and Postgraduate Diploma courses from 1994/95

6. Taught Postgraduate Courses – Overview of Student Numbers

An overview of student numbers on taught postgraduate courses (M.Phil. / M.Sc. / PG Dip.) in 2010/11 shows that a number of courses in all three Faculties are operating below optimal capacity, with fewer than 10 students. Several courses in each Faculty did not run in 10/11 due to low student numbers.

- 75 courses across the three Faculties ran with fewer than 10 students, constituting 44% of the total number offered
- 11 courses did not run due to insufficient numbers (6%)
- 21 of 49 Health Science courses had fewer than 10 students. When combined with courses that did not run due to low student numbers, 51% of taught postgraduate courses in this Faculty raise some cause for concern
- 6 courses in Engineering, Maths and Science had fewer than 10 students (19%). 4 courses (11%) have not had an intake for several years, raising the combined total of courses that require attention to 31%
- The Faculty of Arts, Humanities and Social Sciences had the highest number of courses with fewer than 10 students, comprising 54% of 89 courses on offer. AHSS had 3 courses that did not run in 2009/10, (3%)

Faculty	Taught Courses (M.Phil./M.Sc. /PG Dip.)	<10 students	Did Not Run	Combined: requiring attention
Arts, Humanities & Social Sciences	89	48	3	51
%		54%	3%	57%
Engineering, Maths & Science	32	6	4	10
%		19%	12%	31%
Health Sciences	49	21	4	25
%		43%	8%	51%
Totals	170	44%	6%	50%

Table 7: Overview of Student Numbers on Postgraduate Taught Courses

7. Maintenance of Academic Quality

Academic quality of graduate education is monitored by external examiners who play different functions depending on their role, either to assess taught courses or to examine research theses of individual students.

- *Taught Courses – External Examiners*

Most external examiners are appointed for a three-year period; although for some part-time courses examiners are appointed for four years. All external examiners for taught courses must complete a standard course assessment form for the first two years of their tenure and, in their final year, are required to complete a more extensive report. Appendix 6 contains a list of External Examiners for taught courses for noting and approval by Council. By 16th March 2011, 110 annual reports for 2009/10 have been received. Of these, 46 were for M.Sc. courses, 24 for M.Phil. courses, one for M.S.W., one for MBA, six for Doctorate in Dental Surgery (D.Ch.Dent), four for LL.M., one for M.Ed., three for professional taught doctoral programme (D.Clin.Psych.), and 23 for Postgraduate Diplomas.

In addition, the academic integrity and overall quality of all new postgraduate Masters course proposals are reviewed by external academic assessors, internationally recognised experts in their discipline, before submissions are made to the University Council for approval.

- *Research Degrees*

The role of external examiners is different with respect to research degrees as the examiners are appointed by the Dean of Graduate Studies to individual students to provide an independent academic assessment of every submitted research thesis.

In the academic year 2009/10, there were 347 external examiners involved in the examination of 336 research theses with the latter number being a decrease of 26 from 362 in the previous year. The list of the research examiners, as already approved by the Sub-committee of Board and Council for Higher Degrees, is collated in Appendix 5 for noting.

The results of the examinations of research theses that took place from October 2009 to September 2010 are given in Appendix 2 with data for the previous three years for comparison. The data show that the number of Ph.D. examinations in 2009/10 was 260 including one submission recommended for a lower degree of an M.Litt. (compared to 275 examinations in 2008/09 including one submission recommended for a lower degree of an M.Litt. and 261 in 2007/08 including two submissions recommended for a lower degree of an M.Litt. / M.Sc.).

The decision on the majority of Ph.D., M.Sc. and M.Litt. theses continues to be “minor corrections” (as shown in Appendix 2). Major revisions are requested intermittently, and the number of such outcomes has increased slightly, with 25 out of the relevant sub-total of 336 referred in 2009/2010 (7.4%) compared with 24 out of 362 in 2008/09 (6.6%). Major revisions are now considered to be a more reasonable outcome by all concerned, and almost always result in a greatly improved thesis.

Figure 3 shows the time taken from first submission of the thesis to approval by the Sub-committee of Board and Council for Higher Degrees. This period includes the time taken to

- (i) nominate examiners
- (ii) appoint examiners and send the theses to them
- (iii) arrange a *viva* (if required)
- (iv) receive the examiners reports
- (v) make a decision and inform the student
- (vi) complete revisions
- (vii) bring recommendations to the Sub-committee for Higher Degrees (a Sub-committee of Board and Council).

Figure 3 below illustrates that for most students (63) the thesis examination period was six months in 2009/10 (correspondingly, it took five months for 55 students in 2008/09, and seven months for the largest cohort of 74 students in 2007/08). In 2009/10 out of 333 research examinations 23 (6.9%) involved examination periods of more than twelve months. This compares with 50 (13.8%) out of 362 research examinations in 2008/09 and with 49 (13.5%) out of 361 in 2007/08. The increased number of examinations has led to a concomitant increase in the length of the examination period, which is cause for concern and must continue to be addressed.

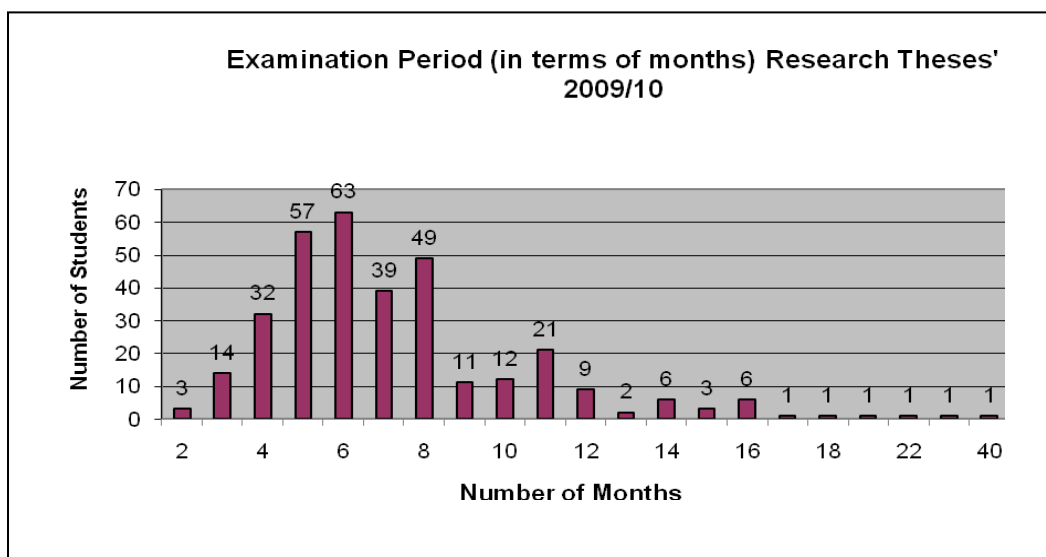


Figure 3. Examination period (in terms of months) of research theses inclusive of 25 theses referred for major revision

Appendix 3 allows for comparison of the number of research degrees awarded by Faculty Grouping and degree. Compared to the previous year, the number of awards by degree varies within class (e.g. MSc, Ph.D.) but also within a Faculty Grouping within a class.

- *Higher Doctorates*

There were no applications for Higher Doctorates in 2009/10.

8. College Awards

The Graduate Studies Office is responsible for administering a number of separate College research award schemes. In 2009/10 there were two major categories of research awards available to full-time students. Table 8 below includes the number of applications for these awards from 2006/07 to 2009/10.

	Ussher Awards (code 1244)				Postgraduate Studentships (code 1252)			
	09/10	08/09	07/08	06/07	09/10	08/09	07/08	06/07
No. of Applicants	230	205	185	270	294	262	203	264
No. of Allocations	6	6	6	6	65	65	65	65

Table 8. Applications for College research awards from 2006/07 to 2009/10

- *Ussher Fellowships (Award code 1244)*

These awards are allocated to exceptionally well-qualified candidates of outstanding promise. They are open to competition by graduates of any nationality, for research in any branch of learning in the College (subject to availability of resources and competent supervision in the chosen area). The awards are for a three-year period of research leading to a Ph.D. They cover fees and provide a maintenance component of €16,000 per annum. There are six Faculty Ussher Fellowships in every academic year. Three are allocated to successful applicants in the Faculty of Arts, Humanities and Social Science; two for the Faculty of Engineering, Mathematics and Science and one for the Faculty of Health Sciences. There are, in addition, five named Ussher Fellowships individually awarded every three years.

- *Postgraduate Studentships (Award code 1252)*

There are 65 Postgraduate Research Studentships offered annually to highly qualified candidates to enable them to undertake postgraduate studies in the College. The holder is required to engage in teaching-related activities, as designated by their Director of Teaching and Learning (Postgraduate), to a maximum of six hours per week. The awards are allocated to each Faculty in proportion to the number of research students registered the previous year. For EU and non-EU fee-paying students they provide an annual maintenance of €8,000 and full fee remission.

In 2008/09 changes were made to the internal system of allocating these awards. Each Faculty now allocates studentships to their individual schools early in the calendar year, and the schools nominate recipients accordingly. Two further significant changes were made: continuing students on the research register are now eligible to apply for these awards, and each individual award can be reallocated on an annual basis if the school so wishes. There have been no changes to the terms of the studentship and stipend (i.e. full fee remission for 3 years and an annual stipend of €8,000).

9. Travel Grants

The GSO administers a travel grant scheme which receives funding from composite sources, such as the Benefaction Fund (called the Graduate Studies Research Travel Fund) yielding around €18,000 annually and from the Trinity Trust. Allocations are made to graduate research students for attendance at conferences related to their research or for students who wish to carry out research abroad to supplement research already undertaken in Ireland. Awards are made quarterly and applications are made in advance of travel. Application details are available on the GSO website.²

In the academic year 2009/10, 173 students were granted a total sum of €69,412.44. This represents an increase on the allocations in 2008/09 when 157 students were allocated €59,398.35. The total amount claimed and reimbursed for the year by the end of September 2010 was €57,348.66.

Destination	No. of students who applied in 2009/10*	No. of students allocated funding in 2009/10*	Amount requested in 2009/10*	Amount allocated in 2009/10*	Amount claimed in 2009/10*
Europe	142	111	€57,154.50	€32,963.23	€24,456.96
USA & Canada	52	44	€42,207.08	€25,882.61	€22,857.46
Rest of World	21	18	€17,452.98	€10,566.60	€10,034.24
Total	215	173	€116,814.56	€69,412.44	€57,348.66

Table 9. Travel grant applications and reimbursements in 2009/10 (*all figures from the accounting period from 1 October 2009 to the end of September 2010)

10. Publications

The GSO is responsible for the production of three major publications and sources of information. These are the *University Calendar Part 2 for Graduate Studies and Higher Degrees*, the *Postgraduate Prospectus* and the Graduate Studies Office website.

- *The University of Dublin Calendar Part 2 for 2009/10*

The *University Calendar Part 2* contains the rules governing the academic progress and conduct of all postgraduate students, both taught and research. Since 1999/00 the *Calendar Part 2* has included the set of general regulations applicable to all postgraduate students, as well as more detailed regulations relating to students undertaking research and taught courses. This largely eliminates the need to refer to the *Calendar Part 1* for postgraduate matters. Offprints of the *Calendar Part 2* are given to all staff and all postgraduate students at registration and are now sent, *gratis*, to all universities in Ireland. There were 5,000 copies of the *Calendar Part 2* printed in 2006/07; 6,000 in 2007/08; 6,500 in 2008/09 and 6,500 in 2009/10.

² http://www.tcd.ie/Graduate_Studies/currentstudents/funding/travelgrants/index.php

- *Postgraduate Prospectus 2010*

Since 1998 the *Postgraduate Prospectus* has been the primary printed form of publicity produced by the GSO for graduate students. It is distributed *gratis* to all intending applicants and all academic staff of the College. It is also sent to all universities in Ireland and the U.K., as well as to a selection of major institutions in Europe and elsewhere.

- *Graduate Studies website*

There have been over 60,000 visits (unique and return visitors), to the website so far in 2011, with the most popular pages being the Prospectus and the Taught Courses listing. Online traffic comes mostly from within Ireland, followed by the EU member states, USA and India. Individual web visitors have come from as far away as New Zealand, Tuvalu and Nepal. Additionally, many hits have been received from Non-Profit Organisations, international government agencies and educational websites in the USA.

11. Other Reporting Items

- *Postgraduate Open Day*

The Graduate Studies Office hosted the annual Postgraduate Open Day on Thursday 27th January 2011. Representatives from each School were on hand to offer advice and information on postgraduate study at TCD. The event was advertised extensively; maximising the use of online advertising and social media to attract over 700 prospective taught and research students to the College.

- *Facebook and Twitter Pages*

The Graduate Studies Office has recently set up Facebook and Twitter Pages as an innovative and cost-effective way to reach prospective students from all around the world. They provide an excellent forum for GSO to communicate information on new courses, scholarships opportunities, upcoming events etc to an international audience. Feedback to date has been very positive with 397 'likes' and 166 'followers' on Facebook and Twitter respectively.

- *Strategic Innovation Fund (SIF)*

SIF I: The Dean of Graduate Studies continued to coordinate the College's postgraduate participation in the SIF I initiative to develop generic training modules for research students, in collaboration with UCC and NUIG. Several events were run for six inter-institutional high-level generic modules, which can be incorporated into Ph.D. student programmes at the partner institutions. TCD coordinated two modules on "Research Ethics" and "Statistics and Data Analysis", and participated in four other modules led by NUIG ("Commercialisation of Research and Technology Transfer" and "Information Literacy") and by UCC ("Research Methods for the Life Sciences" and "Teaching and Learning Skills").

SIF II: As part of the Graduate Education under SIF2 Dublin Region Higher Education Alliance (DRHEA) project, several schools in College developed, in collaboration with UCD, DCU, NUIM, DIT and ITT, advanced Ph.D. modules in a number of disciplines.

Despite funding cuts, significant progress has been made. The Dean serves on the steering committee for this programme.

- *Fourth Level Network*

The Dean of Graduate Studies continues to represent Trinity College Dublin on the IUA's Fourth Level Network, which has proved to be a very successful forum for collaboration and communication between the Deans of Graduate Studies from the 7 Universities.

- *The Innovation Academy*

The Innovation Academy is the educational centerpiece of the Innovation Alliance. It is a collaborative venture in PhD education that builds on existing resources and synergies between TCD and UCD. Its mission is to develop a new breed of creative graduate, expert in their discipline, with a thorough understanding of how innovation can convert knowledge and ideas rapidly into products, services and policies for economic and social benefit.

Academy Course Directors Appointed

Prof. Paul Coughlan (TCD) and Prof. Suzi Jarvis (UCD) were appointed Course Co-Directors for the Innovation Academy. The Directors are leading the planning and implementation of the PG Certificate programme, working with the relevant colleagues in both institutions.

Postgraduate Certificate in Innovation and Entrepreneurship

The Innovation Academy will offer the core modules of the Graduate Certificate in Innovation & Entrepreneurship for the first time in 2010/11.

Creative Thinking and Innovation (10 ECTS) and Opportunity Recognition and Generation (5 ECTS) will be made available in November 2010. The first cohort will be 36 PhD students, drawn evenly from both institutions across all disciplines.

A core team of faculty and industry mentors will lead the seminars, mixing academic excellence with real-world experience.

Innovation Bursaries 2010

To promote innovation and research in College, 10 fully-funded interdisciplinary PhD studentships were awarded in 2010 on the theme of "Sustainable Society". Competition for the bursaries was extremely high across all disciplines. The studentships cover fees and a stipend of €16,000 for four years, as well as start-up and research costs. The bursaries were awarded to interdisciplinary programmes from the Arts, Humanities, Psychology, Bioscience, Bioengineering, Computer Science, Physics and Clinical Medicine.

Postdoctoral Innovation Bursaries

In addition, six Postdoctoral Bursaries of €5,000 each were awarded to post-doctoral researchers, to tackle exciting problems on the theme of Sustainable Society and assist them in establishing an independent research track. The postdoctoral research projects were in areas such as diverse as physics, medicine, computer science, digital arts and pharmacy.

12. Postgraduate Admissions Data 2010/11

Postgraduate admissions data have been incorporated in the GSO Annual Report since 2004, and include detailed admissions data for both research degrees and taught courses for the current academic year 2010/11 with information on the gender, fee status (EU/Non-EU), and delivery format (full-/part-time) of applicants.

a) Research applications: entry in March 2010, September 2010 and March 2011

The data presented in Appendix 7 show applications to the research register as of the 1st April 2011. Applications to the research register were processed via the PAC (Postgraduate Applications Centre) online system from March 2010.

There are 985 applicants, with the Schools of Medicine and Social Sciences and Philosophy having received the greatest number of applications (111 and 103 respectively), the School of English received 77 applications, Histories and Humanities 72 and Engineering 67, six Schools received over 40 applications, three Schools received between 30 and 40 applications, three Schools received between 20 and 30 applications and five Schools received between 10 and 20 applications each.

As of 1st April 2011, there were 483 students registered on year 1 of the register – this represents a decrease of 130 students on the number on year 1 of the register 4th March 2010. Of these students, 15.1% are registered with the School of Medicine, 9.3% with the School of Psychology, 7.5% with the School of Engineering and 6.6% School of Histories and Humanities.

The total number of registered research students as of 1st April 2011 was 2131. Of this number, the majority (or 90.4%) are within the timescale of 2 years for Masters/4 years for Ph.D. for which HEA funding is available. 52 students remain on the Masters register in year 3 and beyond, and 196 students are currently on the Ph.D. register in year 5 and upwards. The total number of students who fall outside the recommended timescale is 248, or 11.6% of total registered research students (compared to 309 or 14.6% in 2009/10).

The breakdown of registered students into EU and non-EU fee categories indicates that 88.7% of research students (1,891) are categorised as EU for fee purposes, and 11.3% (240) non-EU.

b) Applications for taught courses: entry in September 2010 and January 2011

The data presented in Appendix 8 show applications to postgraduate taught courses in year 1 for new entrants as of the end of March 2011. 5,484 taught applications have been received by the GSO *via* PAC.

Applications for entry to postgraduate taught courses in 2010/11 were processed in two ways:

- 1) Via the PAC (Postgraduate Applications Centre) online system. Applications for the majority of taught postgraduate courses were processed entirely through this system following a successful pilot of the system in 2006/07.

A total of 5,484 applications for 205 courses were processed through this system for intake in September 2010 and January 2011.

- 2) Through direct admissions: applicants apply directly to the School in which they intend to study and the Graduate Studies Office subsequently receives the files of those applicants who are to be offered places.

The data presented in Appendix 8 shows that of the 5,484 applications received for taught courses (Masters and P. Grad. Dips) via PAC, 36% accepted the offer (1,954 students).

1794 of these students had registered by 31st March 2011.

The breakdown of registered students into EU and non-EU fee categories indicates that 89.6% of taught course students (1,609) are categorised as EU for fee purposes, and 10.3% (185) non-EU.

Appendix 1. Taught Postgraduate Courses – Student Numbers 2005/06 to 2010/11

FACULTY OF ARTS, HUMANITIES & SOCIAL SCIENCES									
School	Code	Course Title	Duration	2005/06	2006/07	2007/08	2008/09	2009/10	2010/11
Business	110	Master in Business Administration (MBA)	1	28	23	28	29	19	27
	566	M.Sc. in Finance	1				26	27	38
	567		2				6	8	18
	146	M.Sc. (Management) in Organisation Behaviour	2	32		19		10	12
	119	M.Sc. (Management)	2	12	2	5	7	6	6
	679	M.Sc. (Management) in International Business	2	33					NLU*
	792	Masters in International Management	1					11	22
	793		2						1
	760	PG Dip. in Management	1				1		NLU*
Drama, Film & Music	721	M.Phil. in Film and History	1		9	10	8	14	9
	738	M.Phil. in Theatre and Performance	1		6	5	7	12	12
	780	M.Phil. in Irish Film, Music & Theatre	1				DNR	5	4
	779	M.Phil. in Musicology and Music Theory	1				DNR	DNR	DNR**
Education	749	Master in Education	2		53	59	66	50	50
	752		1	12	10	8	3	3	NLU*
	232	Master in Studies (School Leadership)	1	24	17	42	36	23	NLU*
	601	H.Dip. in Education (Primary Teaching)	1	78	87	85	163	163	93
	762	PG Dip. in Education (Secondary Teaching)	1	124	128	131	126	128	129
	828	M.Ed. (Agression Studies)	1						1
	829		2						10
	834	M.Ed. (Co-Operative Learning)	1						1
	836		2						4
	838	M.Ed. (Drama in Education)	1						1
	839		2						13
	848	M.Ed. (Foundation Studies)	1						2
849	2							12	

	852	M.Ed. (Leadership and Management)	1						1
	853		2						23
	854		3						6
	856	M.Ed. (Positive Behaviour Management)	2						7
	862	M.Ed. (Special Educational Needs)	2						10
	866	M.Ed. (Teaching and Learning Higher Education)	3						12
	867	M.Ed. (One Year Thesis)	1						60
	770	In Service Education - 4 modules (SLSS)	1			12	28		NLU*
	771	In Service Education - Disability Needs Assessment	1			20			NLU*
English	255	M.Phil. in Creative Writing	1	14	15	16	15	13	15
	789	M.Phil. in Irish Writing	1	18	17	26	12	17	18
	764	M.Phil. in Literatures of the Americas	1			6	15	7	8
	709	M.Phil. in Popular Literature	1	22	19	24	22	26	19
Histories & Humanities	778	M.Phil. in Classics	1				7	10	8
	550	M.Phil. in Gender and Women's Studies	1			9	6	10	10
	551		2		6	1	2	2	3
	704	M.Phil. in Irish Art History	1	11	12	10	10	11	9
	225	M.Phil. in Medieval History	1	4	8	1	6	7	4
	732	M.Phil. in Modern Irish History	1	12	10	22	13	20	16
	171	M.Phil. in Reformation & Enlightenment Studies	1	4	8	1	DNR	5	NLU*
Languages, Literatures & Cultural Studies	745	M.Phil. in Comparative Literature	1		3	4	5	13	5
	628	M.Phil. in Early Irish	2		2		1		2
	795	M.Phil. in European Studies	1					9	10
	742	M.Phil. in German Literature with Language Pedagogy	1			2	1	DNR	DNR**
	715	M.Phil. in Literary Translation	1	10	13	16	10	9	7
	671	M.Phil. in Medieval Language, Literature and Culture	1	6	4	2	5	7	6
	627	PG Dip. in Old Irish	1	1		2			NLU*
	185	M.Phil. in Textual and Visual Studies	1	6	6	5	DNR	4	7

Law	607	LL.M. (Master in Laws)	1	61	71	45	73	101	91
Linguistics, Speech & Communication Sciences	518	M.Phil. in Applied Linguistics	1			7	11	5	9
	519		2	10	12	3	1	3	5
	761	M.Phil. in English Language Teaching	1			6	6	3	8
	520	M.Phil. in Linguistics	1			9	8	13	6
	521		2	9	7	5		1	4
	534	M.Phil. in Speech and Language Processing	1	2	4	5	4	4	6
	758	M.Sc. in Clinical Speech and Language Studies	2		12	5	6	5	10
759	PG Dip. in Clinical Speech and Language Studies	1				2	8	3	
Psychology	785	M.Sc. in Applied Behaviour Analysis	1				8	10	9
	743	M.Sc. in Applied Psychology	1		20	25	34	34	32
	744		2		10	7	8	3	3
	763	M.Sc. in Clinical Supervision (Psychology)	1				6	9	2
			2				6	5	4
	205	M.Sc. in Counselling Psychology	2	20	20	20	20		NLU*
	720	H.Dip. in Psychology	2	17	22	18	20	18	41
784	PG Dip. in Applied Behaviour Analysis	1			22	20	20	15	
712	PG Dip. in Clinical Supervision (Psychology)	1	8	8	4	5	2	DNR**	
Religions, Theology & Ecumenics	514	M.Phil. in Ecumenics	1			9	3	9	1
	515		2			2	4	1	NLU*
	528	M.Phil. in Peace Studies	1	49	45	36	31	28	2
	529		2			6	8	2	1
	552	M.Phil. in Reconciliation Studies	1	13	15	11	6	8	NLU*
	553		2	12	10	1	2	2	2
	790	Master in Theological Studies (Mode A)	3						25
	791	Master in Theological Studies (Mode B)	6					5	10
	813	M.Phil. International Peace Studies	1						26
	814		2						2
	824	M.Phil. Intercultural Theology & Interreligious Studies	1						5
	825		2						2
673	PG Dip. in Conflict & Dispute Resolution Studies	1	15	11	20	24	17	13	
Social Sciences & Philosophy	262	M.Phil. in Ethnic & Racial Studies	1	14	13	12	12	6	3

	826	M.Phil. in Race, Ethnicity, Conflict	1						13
	214	M.Phil. in Psychoanalytic Studies	1	9	8	6	11	8	8
	568	M.Sc. in Comparative European Politics	1				18	19	12
	569		2				2		1
	506	M.Sc. in Economics	1	23	28	19	20	24	12
	507		2				1	1	4
	645	M.Sc. in Economic Policy Studies	2	15			19	No intake	16
821	M.Sc. in International Politics	1						19	
Social Work & Policy	252	M.Sc. in Applied Social Research	1	22	19	25	19	24	11
	235	M.Sc. in Child Protection & Welfare	1	3	7	6	1	5	7
	625	M.Sc. In Drug and Alcohol Policy	2		10		10		9
	669	Master in Social Work	2	21	22	22	22	20	44
	229	PG Dip. in Child Protection & Welfare	1	16	16	15	13	17	14
	878	M.Sc. Disability Studies	2						4
	879		1						7

FACULTY OF ENGINEERING, MATHS & SCIENCE									
School	Code	Course Title	Duration	2005/06	2006/07	2007/08	2008/09	2009/10	2010/11
Computer Science & Statistics	617	M.Sc. in Health Informatics	2	19	13	18	21	25	40
	616	PG Dip. in Health Informatics	1	15	23	16			EA***
	781	M.Sc. in Interactive Digital Media	1				22	15	17
	769	M.Sc. in Interactive Entertainment Technology	1			14	21	20	13
	700	M.Sc. in Management of Information Systems	2	32	33	37	43	33	67
	739	M.Sc. in Mobile and Ubiquitous Computing	2	24	17	16	10	16	19
	619	M.Sc. in Networks & Distributed Systems	1	16	15	19	16	24	7
	750	M.Sc. in Technology and Learning	2	27	26	26	24	21	45
	129	PG Dip. in Statistics*	1	96	95	111	132	110*	36
	807	PG Dip in Computing (Conv) with Adv Interdisciplinary Outlook	2					5	3

	805	PG Dip in Computing with Advanced Interdisciplinary Outlook	2					8	4
Engineering	542	M.Sc. in Bioengineering	1			13	14	13	15
	543		2	12	9	3	5	2	2
	524	M.Sc. in Civil Engineering	1	23	24	12	8	18	22
	525		2			11	11		1
	733	M.Sc. in Mechanical Engineering (ERASMUS MUNDUS)	2	7	4	4	10	3	NLU*
	657	M.Sc. in Integrated System Design	2	1	DNR	DNR	DNR	DNR	DNR**
	257	M.Phil. Music & Media Technologies	1	21	16	18	13	12	22
	706	PG Dip. in Applied Building Repair & Conservation	1	15	11	16	12	14	12
	614	PG Dip. in Construction Law & Contract Admin	1	26	23	26	25	26	26
	201	PG Dip. in Environmental Engineering	1	23	23	34	28	24	28
	637	PG Dip. in Fire Safety Practice	1	28	14	29	23	21	12
	705	PG Dip. in Health and Safety Construction	1			21	11	10	8
	186	PG Dip. in Highway and Geotechnical Engineering	1				16	7	12
	260	PG Dip. in Music & Media Technologies	2	20	19	19	19	13	17
	n/a	PG Dip. in Physical Planning	1	1	DNR	DNR	DNR	DNR	DNR**
136	PG Dip. in Project Management	1	79	71	85	85	65	61	
Mathematics	626	M.Sc in High Performance Computing	1	7	7	6	8	7	10
Natural Science	748	M.Sc. in Biodiversity and Conservation	1		14	15	16	16	16
	803	M.Sc. in Environment & Development	1				14	14	15
	827	M.Sc. in Development Practice	2						23
	169	M.Sc. in Environmental Sciences	1	17	19	17	12	15	15
Chemistry	753	M.Sc. In Chemical & Biological Techniques	2					DNR	DNR**
	923	PG Dip. In Chemical & Biological Techniques	3					DNR	DNR**

* 30 students taking as primary course (fee-paying)/ 80 students taking as secondary course (free)

FACULTY OF HEALTH SCIENCES									
School	Code	Course Title	Duration	2005/06	2006/07	2007/08	2008/09	2009/10	2010/11
Medicine	782	M.Sc. In Cardiovascular Rehabilitation & Prevention	1					1	1
	783	M.Sc. In Cardiovascular Rehabilitation & Prevention	2					3	2
	736	M.Sc. in Clinical Chemistry	2	11	6	7	5	1	10
	223	M.Sc. in Cardiology	3			8	No intake	DNR	DNR**
	224	M.Sc. in Child & Adolescent Analytic Psychotherapy	3	12	No intake	No intake	DNR	No intake	NLU*
	799	M.Sc. in Exercise Physiology	1	5	6	5	5	9	7
	731	M.Sc. in Global Health	1	16	19	22	14	20	14
	254	M.Sc Health Services Management	2	16	22	26	21	15	30
	713	M.Sc. in Medical Imaging	1				4	11	15
	557	M.Sc. In Molecular Pathology	2	30	27	31	23	16	16
	532	M.Sc. in Molecular Medicine	1	18	17	13	18	22	21
	533		2						2
	725	PG Dip. In Molecular Medicine	2						1
	765	Master in Science in Mental Health	1						4
	798	M.Sc. in Biomedical Sciences (Intercalated)	1						6
	801	M.Sc. Cardiology	2						8
	746	M.Sc. in Neuroscience (ft)	1		11	19	16	21	13
	618	M.Sc. in Occupational Therapy	2		3	No intake	5	No intake	5
	708	M.Sc. in Pharmaceutical Medicine	2	4	3	2	10	8	14
	620	M.Sc Psychoanalytic Psychotherapy	3	11	No intake	No intake	9	No intake	5
	562	M.Sc. Physical Sciences in Medicine	1			10	11	10	9
	563		2			2	1		EA***
	787	M.Sc. in Respiratory Physiotherapy	2					2	0
	208	M.Sc. in Sports Medicine	1	5	7	7	10	9	10
	756	PG Dip. in Cognitive Psychotherapy	1		11	12	9	10	15
	990	PG Dip. in Exercise Physiology	1	9	7	14	3		EA***
	126	PG Dip. in Gynaecology & Obstetrics	1	10	11	9	DNR	DNR	DNR**
707	PG Dip. in Pharmaceutical Medicine	2	3	4	3	4	3	5	

Nursing & Midwifery	802	M.Sc. in Cancer Care	2					13	14
	531	M.Sc. in Gerontological Nursing	2	3	8	10	7	17	31
	735	M.Sc. in Mental Health	2		31	26	41	34	41
	539	M.Sc. In Midwifery	2	7	3	3	8	5	4
	537	M.Sc. In Nursing	2	29	16	15	16	11	20
	747	M.Sc. in Palliative Care	2			10	11	5	17
	656	PG Dip. in Clinical Health Sciences Education	1	1	2	3	7	2	4
	240	PG Dip. in Gerontological Nursing	1	15				DNR	EA***
	648	PG Dip. in Midwifery	2	45	54	41		44	EA***
	554	PG Dip. in Oncological Nursing	1				18		NLU*
	665		2	8	12	15			NLU*
	646	PG Dip. in Paediatric Nursing	2	14	8			DNR	NLU*
	649	PG Dip. in Specialist Nursing	1	66	52	45	29	47	44
	536	M.Sc. Nursing	1						3
	880	M.Sc. in Dementia	2						9
	766	Higher Diploma in Midwifery	1						45
755	Higher Diploma in Children's Nursing (R.C.N.)	1		14	14	11	13	15	
Pharmacy and Pharmaceutical Sciences	659	M.Sc. in Community Pharmacy	1	5		5		4	1
	222	M.Sc. in Hospital Pharmacy	2	10			10	2	10
	544	M.Sc. in Pharmaceutical Analysis	1			6	7	8	11
	545		2	6	7	4		2	3
	726	M.Sc. in Pharmaceutical Manufacturing Technology	1		8	3	6	27	22
	546	M.Sc. in Pharmaceutical Technology	1				1	7	3
	635		2	4					DNR**
	658	PG Dip. in Community Pharmacy	2		4	15	8	6	13
202	PG Dip. in Pharmaceutical Manufacturing Technology	2	30				2	20	
Dental Science	622	Master in Dental Surgery	3	7	5	9			NLU*
	621	PG Dip. in Clinical Dentistry	3	24			21		19
	773	PG Dip. In Conscious Sedation (Jn) (p/t)	2						8
	774	PG Dip. In Conscious Sedation	2			6			DNR**

* NLU - course code No Longer in Use

** DNR - Did Not Run

*** EA - Exit Award

Appendix 2. Results of approved Research and Professional Degree Examinations (by degree) for the past four years (covering the period from October 2009 to the end of September 2010)

2009-2010

Degree	Total approved examinations	Degree awarded as it stands	Minor corrections required	Referred for major revisions	Lower degree awarded (from a major revision)	Failed
Ph.D.	260	43	217	23	0	0
M.Sc.	32	3	28	0	0	1
M.Litt.	21	2	17	0	1	1
M.D.	14	2	12	1	0	0
D.Dent.Ch.	5	0	5	1	0	0
M.Ch.	1	0	1	0	0	0
M.A.I.	1	0	0	0	0	1
D.Ed.	2	1	1	0	0	0
Total	336	51	281	25	1	3

*1 PhD's awarded Lower Degree, 1 x M.Litt.

2008-2009

Degree	Total approved examinations	Degree awarded as it stands	Minor corrections required	Referred for major revisions	Lower degree awarded (from a major revision)	Failed
Ph.D.	275	43	211	20	1*	0
M.Sc.	44	4	40	0	0	0
M.Litt.	17	7	9	1	0	0
M.D.	13	1	10	2	0	0
M.Dent.Ch.	6	1	5	0	0	0
M.Ch.	5	0	4	1	0	0
M.A.I.	2	0	2	0	0	0
Total	362	56	281	24	0	0

*1 PhD's awarded Lower Degree, 1 x M.Litt.

2007-2008

Degree	Total approved examinations	Degree awarded as it stands	Minor corrections required	Referred for major revisions	Lower degree awarded (from a major revision)	Failed
Ph.D.	261	25	218	16	2*	0
M.Sc.	62	3	58	2	0	0
M.Litt.	21	5	15	2	0	0
M.D.	7	1	6	0	0	0
M.Dent.Ch.	7	0	7	0	0	0
M.Ch.	2	0	2	0	0	0
M.A.I.	1	0	1	0	0	0
Total	361	33	307	20	2	0

*2 PhD's awarded Lower Degree, 1 x M.Litt / 1 x M.Sc.(following major revisions)

2006-2007

Degree	Total approved examinations	Degree awarded as it stands	Minor corrections required	Referred for major revisions	Lower degree awarded (from a major revision)	Failed
Ph.D.	237	37	183	18	1 M.Litt.	0
M.Sc.	49	12	35	2		0
M.Litt.	25	3	17	4		0
M.D.	11	4	7	0		0
M.Dent.Ch.	4	0	4	0		0
M.Ch.	4	0	4	0		0
Total	330	56	250	24		0

Appendix 3. Number of research degrees awarded by Faculty Grouping and degree in 2009/10 (includes September 2010)

Faculty	Ph.D.			M.Sc.			M.Litt.			M.D.			M.Dent.Ch. / D.Ch.Dent.			M.Ch.			M.A.I.			D.Ed.
	07/08	08/09	09/10	07/08	08/09	09/10	07/08	08/09	09/10	07/08	08/09	09/10	07/08	08/09	09/10	07/08	08/09	09/10	07/08	08/09	09/10	09/10
Arts, Humanities and Social Sciences	102	95	88	2	2	2	22	17	21	0	0	0	0	0	0	0	0	0	0	0	0	2
Engineering, Mathematics and Science	125	121	121	45	28	20	0	0	0	0	0	0	0	0	0	0	0	0	1	2	1	0
Health Sciences	32	38	51	17	14	10	0	0	0	7	11	14	7	6	5	2	4	1	0	0	0	0
TOTAL	259	254	260	64	44	32	22	17	21	7	11	14	7	6	5	2	4	1	1	2	1	2

Appendix 4. Nationality of students in 2008/09 and 2009/10

CONTINENT	COUNTRY	2008/09	2009/10	Difference	Sub-Totals in 0809	Sub-Totals in 0910	Overall change in 0910
AFRICA	BOTSWANA	1	0	-1			
	BURUNDI	1	1	0			
	CAMEROON	1	1	0			
	CONGO, DEMOCRATIC REPUBLIC		2	2			
	EGYPT	7	7	0			
	ETHIOPIA	5	2	-3			
	GHANA	2	2	0			
	GUINEA	2	0	-2			
	KENYA	3	3	0			
	LIBYAN ARAB JAMAHIRIYA	8	6	-2			
	MALAWI	1	3	2			
	NIGERIA	23	35	12			
	RWANDA	1	2	1			
	SIERRA LEONE	1	0	-1			
	SOUTH AFRICA	4	13	9			
	SUDAN	9	9	0			
	TANZANIA	1	1	0			
	UGANDA	7	3	-4			
	ZAMBIA	2	3	1			
	ZIMBABWE	8	12	4	87	105	18
ASIA	BAHRAIN	3	2	-1			
	BANGLADESH	7	5	-2			
	BRUNEI DARASSALAM	1	1	0			
	CHINA	60	62	2			
	HONG KONG	3	2	-1			
	INDIA	58	65	7			
	INDONESIA	1	1	0			
	IRAN, ISLAMIC REPUBLIC OF	5	7	2			
	IRAQ	2	2	0			
	ISRAEL	3	1	-2			
	JAPAN	7	6	-1			
	JORDAN	7	8	1			
	KUWAIT	0	2	2			
	LEBANON	0	1	1			
	MACAO	1	0	-1			
	MALAYSIA	12	14	2			
	MONGOLIA	1	1	0			
	NEPAL	4	2	-2			
	OMAN	1	1	0			

	PAKISTAN	11	21	10			
	PALESTINE	0	1	1			
	PHILIPPINES	7	7	0			
	REP. OF KOREA	3	6	3			
	SINGAPORE	4	3	-1			
	SRI LANKA	3	3	0			
	SYRIAN ARAB REPUBLIC	1	2	1			
	TAIWAN, PROVINCE OF CHINA	5	2	-3			
	THAILAND	2	1	-1			
	UNITED ARAB EMIRATES	1	1	0			
	VIET NAM	5	4	-1	218	234	16
AUSTRALASIA	AUSTRALIA	6	8	2			
	NEW ZEALAND	5	4	-1	11	12	1
	CANADA	40	46	6			
	GUATEMALA	1	0	-1			
	JAMAICA	3	3	0			
	MEXICO	6	6	0			
	ST.VINCENT & GRENADINES	1	0	-1			
	TRINIDAD & TOBAGO	0	2	2			
	UNITED STATES OF AMERICA	177	195	18	228	252	24
	ARGENTINA	1	0	-1			
	BRAZIL	6	6	0			
	CHILE	2	3	1			
	COLOMBIA	3	2	-1			
	PERU	0	1	1			
	VENEZUELA	0	1	1	12	13	1
	AUSTRIA	7	6	-1			
	BELGIUM	8	7	-1			
	BULGARIA	4	3	-1			
	CYPRUS	1	1	0			
	CZECH REPUBLIC	7	5	-2			
	DENMARK	2	2	0			
	ESTONIA	3	4	1			
	FINLAND	5	4	-1			
	FRANCE	36	46	10			
	GERMANY	79	88	9			
	GREAT BRITAIN	207	196	-11			
	GREECE	30	27	-3			
	HUNGARY	5	7	2			
	IRELAND	3960	4015	55			
	ITALY	74	82	8			
	LATVIA	0	1	1			
	LITHUANIA	6	8	2			

	LUXEMBOURG	1	2	1			
	MALTA	5	7	2			
	POLAND	71	70	-1			
	PORTUGAL	10	14	4			
	ROMANIA	12	11	-1			
	SLOVAKIA	4	4	0			
	SLOVENIA	1	3	2			
	SPAIN	39	42	3			
	SWEDEN	9	9	0			
	THE NETHERLANDS	16	16	0	4602	4680	78
EUROPE (NON-EU)	BELARUS	2	2	0			
	CROATIA	2	3	1			
	GEORGIA	1	0	-1			
	ICELAND	2	0	-2			
	KAZAKHSTAN	0	1	1			
	MACEDONIA	1	0	-1			
	MOLDOVA		1	1			
	NORWAY	4	2	-2			
	RUSSIAN FEDERATION	24	19	-5			
	SERBIA	3	1	-2			
	SWITZERLAND	3	4	1			
	TURKEY	6	6	0	48	39	-9
	TOTAL	5206	5335	129	5206	5335	129

*data has been extracted on basis of nationality rather than country / county code, to ensure the inclusion of international students who provide a home address based in Ireland.

Appendix 5. List of external examiners for research degrees by faculty in 2009/10 listed alphabetically by school

Faculty of Arts, Humanities and Social Sciences			
Name	Degree	School	Academic Address
Prof. G. Fitzgerald	Ph.D.	Business	Information Systems and Computing, Brunel University, U.K.
Dr T. Turner	M.Litt.	Business	School of Business, University of Limerick
Dr M. Doherty	M.Litt.	Business	School of Law and Business, D.C.U.
Prof. J. Denis	Ph.D.	Business	Département d'Administration de la Santé, Université de Montréal, Quebec, Canada
Dr J. McCann	Ph.D.	Business	All Hallows College, Dublin
Prof. J. Fahy	M.Litt.	Business	Dept. of Management and Marketing, University of Limerick
Dr C. Rigg	M.Litt.	Business	School of Business and Social Studies, Institute of Technology Tralee, Co. Kerry
Prof. R. Galliers	Ph.D.	Business	Bentley University, Massachusetts, U.S.A.
Dr A. Howard	M.Litt.	Drama, Film and Music	School of Music, University of East Anglia, Norwich, U.K.
Dr A. Cascelli	M.Litt.	Drama, Film and Music	Dept. of Music, N.U.I. Maynooth, Co. Kildare
Prof. D. Kiberd	Ph.D.	Drama, Film and Music	Dept. of English, U.C.D.
Prof. M. Shevtsova	Ph.D.	Drama, Film and Music	Drama Department, Goldsmith College, London, U.K.
Dr P. Burke	M.Litt.	Drama, Film and Music	St. Patrick's College, D.C.U.
Prof. J. Cowan	Ph.D.	Education	Edinburgh Napier University, Scotland, U.K.
Dr A. Mulkeen	M.Litt.	Education	Education Department, N.U.I. Maynooth, Co. Kildare
Dr O. McGarr	D.Ed.	Education	Dept. of Education and Professional Studies, University of Limerick
Dr M. O'Laoire	D.Ed.	Education	Institute of Technology Tralee, Co. Kerry
Prof. C. O'Neill	Ph.D.	Education	Winchester, Hampshire, U.K.
Prof. T. Eilersten	Ph.D.	Education	Dept. of Education, University of Tromsø, Norway
Dr L. Harte	Ph.D.	English	School of Arts, Histories and Cultures, University of Manchester, U.K.
Prof. J. Leerssen	Ph.D.	English	Dept. of European Studies, University of Amsterdam, The Netherlands
Prof. A. Roche	Ph.D.	English	School of English, Drama and Film, U.C.D.
Prof. D. Attridge	Ph.D.	English	Dept. of English and Related Literature, University of York, U.K.
Prof. H. Glen	Ph.D.	English	Faculty of English, University of Cambridge, U.K.
Dr M. Hinds	Ph.D.	English	Mater Dei Institute of Education, Dublin
Prof. R. Kerridge	Ph.D.	English	School of Humanities and Cultural Industries, Bath Spa University, U.K.
Prof. J. Roberts	Ph.D.	English	Institute of English Studies, University of London, U.K.
Dr P. MacCormack	Ph.D.	English	Dept. of English, Communication, Film and Media, Anglia Ruskin University, Cambridge, U.K.
Prof. I. Haynes	Ph.D.	Histories and Humanities	School of Historical Studies, Newcastle University, U.K.
Prof. C. Whatley	Ph.D.	Histories and Humanities	School of Humanities, University of Dundee, Scotland, U.K.
Dr Y. Hamialikis	Ph.D.	Histories and Humanities	School of Humanities, University of Southampton, U.K.
Dr C. Adams	M.Litt.	Histories and Humanities	School of Archaeology, Classics and Egyptology, University of Liverpool, U.K.
Dr M. Coleman	M.Litt.	Histories and Humanities	School of History and Anthropology, Queen's University Belfast, Northern Ireland, U.K.

Prof. M. Daly	M.Litt.	Histories and Humanities	College of Arts and Celtic Studies, U.C.D.
Prof. K. Sidwell	Ph.D.	Histories and Humanities	Dept. of Greek and Roman Studies, University of Calgary, Canada
Dr E. Fitzpatrick	Ph.D.	Histories and Humanities	School of Geography and Archaeology, N.U.I. Galway
Dr C. Dixon	Ph.D.	Histories and Humanities	School of Politics, International Studies and Philosophy, Queen's University Belfast, Northern Ireland, U.K.
Prof. R. Morris	Ph.D.	Histories and Humanities	School of History, Classics and Archaeology, University of Edinburgh, Scotland, U.K.
Prof. A. Guelke	Ph.D.	Histories and Humanities	School of Politics, International Studies and Philosophy, Queen's University Belfast, Northern Ireland, U.K.
Prof. Dr. G. Hirschfield	Ph.D.	Histories and Humanities	Bibliothek für Zeitgeschichte, Württembergische Landesbibliothek, Stuttgart, Germany
Dr I. Torrance	M.Litt.	Histories and Humanities	Dept. of Classics, University of Notre Dame, Indiana, U.S.A.
Dr O. Creighton	Ph.D.	Histories and Humanities	Dept. of Archaeology, University of Exeter, U.K.
Dr N. Gordon-Bowe	Ph.D.	Histories and Humanities	Faculty of Visual Culture, National College of Art and Design, Dublin
Dr C. Pollard	Ph.D.	Histories and Humanities	Ashmolean Museum, University of Oxford, U.K.
Dr F. O'Kane-Crimmins	M.Litt.	Histories and Humanities	School of Architecture, Landscape and Civil Engineering, U.C.D.
Mr. J. Bradley	Ph.D.	Histories and Humanities	Dept. of History, N.U.I. Maynooth, Co. Kildare
Dr V. Goldsworthy	Ph.D.	Histories and Humanities	Faculty of Arts and Social Sciences, Kingston University, U.K.
Prof. R. Oram	Ph.D.	Histories and Humanities	Dept. of History, University of Stirling, Scotland, U.K.
Prof. E. Shagan	Ph.D.	Histories and Humanities	Dept. of History, University of California, Berkeley, U.S.A.
Prof. D. Kennedy	Ph.D.	Histories and Humanities	Dept. of Classics and Ancient History, University of Bristol, U.K.
Prof. D. Carpenter	Ph.D.	Histories and Humanities	Dept. of History King's College London, U.K.
Prof. L. Haas	Ph.D.	Histories and Humanities	Dept. of Sociology, Indiana University, U.S.A.
Mr. J. Paterson	Ph.D.	Histories and Humanities	School of Historical Studies, Newcastle University, U.K.
Prof. D. Moran	Ph.D.	Histories and Humanities	School of Philosophy, U.C.D.
Dr J. Law	Ph.D.	Languages, Literatures and Cultural Studies	Dept. of History, Swansea University, Wales, U.K.
Prof. P. O'Donovan	Ph.D.	Languages, Literatures and Cultural Studies	Dept. of French, U.C.C.
Prof. R. English	Ph.D.	Languages, Literatures and Cultural Studies	School of Politics, International Studies and Philosophy, Queen's University Belfast, Northern Ireland, U.K.
Dr E. Ushioda	Ph.D.	Languages, Literatures and Cultural Studies	Centre for Applied Linguistics, University of Warwick, Coventry, U.K.
Prof. A. Phipps	Ph.D.	Languages, Literatures and Cultural Studies	Faculty of Education, University of Glasgow, Scotland, U.K.
Prof. B. Havel	Ph.D.	Law	DePaul University College of Law, Chicago, U.S.A.
Prof. A. Berkeley	Ph.D.	Law	K&L Gates, London, U.K.
Dean G. Mosier	Ph.D.	Law	College of Business Administration, University of Nevada, U.S.A.
Dr G. Verdirame	Ph.D.	Law	Lauterpracht Centre for International Law, Cambridge, U.K.
Dr J. Anderson	Ph.D.	Law	School of Law, Queen's University of Belfast, Northern Ireland, U.K.
Mr. S. Boyes	Ph.D.	Law	Nottingham Law School, University of Nottingham, U.K.
Prof. D. Gwynn Morgan	Ph.D.	Law	School of Law, U.C.C.

Prof. C. O'Kinneide	Ph.D.	Law	Faculty of Law, University College London, U.K.
Dr L. Roberts	Ph.D.	Linguistics, Speech and Communication Sciences	Max Planck Institute for Psycholinguistics, Nijmegen, The Netherlands
Prof. R. Cowie	Ph.D.	Linguistics, Speech and Communication Sciences	School of Psychology, Queen's University Belfast, Northern Ireland, U.K.
Dr K. Tanaka	M.Litt.	Linguistics, Speech and Communication Sciences	Europe Japan Research Centre, Oxford Brooks University, U.K.
Prof. V. Walsh	Ph.D.	Psychology	Institute of Cognitive Neuroscience, University College London, U.K.
Dr K. Curran	Ph.D.	Psychology	School of Medicine and Medical Sciences, U.C.D.
Dr E. O'Hare	M.Sc.	Psychology	School of Psychology, Queen's University Belfast, Northern Ireland, U.K.
Dr A. Bleske-Rechek	Ph.D.	Psychology	Dept. of Psychology, University of Wisconsin-Eau Claire, U.S.A.
Dr A. Stone	Ph.D.	Psychology	Dept. of Psychiatry and Behavioural Sciences, Stony Brook University, New York, U.S.A.
Dr T. Gannon	Ph.D.	Psychology	Keynes College, University of Kent, U.K.
Prof. F. McGlone	Ph.D.	Psychology	Cheshire, U.K.
Dr K. Laurens	Ph.D.	Psychology	Institute of Psychiatry, King's College London, U.K.
Prof. A. Furnham	Ph.D.	Psychology	Dept. of Psychology, University of London, U.K.
Dr M. Hogan	M.Sc.	Psychology	Dept. of Psychology, N.U.I. Galway
Dr M. O'Connor	Ph.D.	Psychology	School of Psychology, U.C.D.
Dr A. Jeffers	Ph.D.	Religions, Theology and Ecumenics	The Martin Harris Centre for Music and Drama, University of Manchester, U.K.
Prof. M. Barnes	Ph.D.	Religions, Theology and Ecumenics	Heythrop College, University of London, U.K.
Revd. Dr J. Morris	M.Litt.	Religions, Theology and Ecumenics	Trinity Hall, University of Cambridge, U.K.
Prof. P. Schmidt-Lenkel	Ph.D.	Religions, Theology and Ecumenics	Religionswissenschaft und interkulturelle Theologie, Universität Münster, Germany
Dr S. Pearse	Ph.D.	Religions, Theology and Ecumenics	History Department, University of Southampton, U.K.
Prof. P. Alexander	Ph.D.	Religions, Theology and Ecumenics	School of Arts, Histories and Cultures, University of Manchester, U.K.
Dr M. O'Kane	M.Litt.	Religions, Theology and Ecumenics	Dept. of Theology and Religious Studies, University of Wales, U.K.
Dr G. Flynn	M.Litt.	Religions, Theology and Ecumenics	Mater Dei Institute of Theology, D.C.U.
Dr V. Malesevic	M.Litt.	Religions, Theology and Ecumenics	School of Political Science and Sociology, N.U.I. Galway
Prof. K. Fierke	Ph.D.	Religions, Theology and Ecumenics	School of International Relations, University of St. Andrew's, Scotland, U.K.
Prof. K. Filgio	Ph.D.	Social Sciences and Philosophy	Centre for Psychoanalytic context, University of Essex, Colchester, U.K.
Prof. F. Warnock	Ph.D.	Social Sciences and Philosophy	Darden Business School, University of Virginia, U.S.A.
Prof. P. Thompson	Ph.D.	Social Sciences and Philosophy	Dept. of Human Resource Management, University of Strathclyde Business School, Scotland, U.K.
Prof. V. Ginsburgh	Ph.D.	Social Sciences and Philosophy	Université Libre de Bruxelles, Belgium
Prof. S. Franklin	Ph.D.	Social Sciences and Philosophy	The London School of Economics, U.K.
Dr J. Timmermann	Ph.D.	Social Sciences and Philosophy	Moral Philosophy Department, University of St. Andrew's, Scotland, U.K.
Dr J. O'Shea	Ph.D.	Social Sciences and Philosophy	Dept. of Philosophy, U.C.D.
Prof. R. Gibson	Ph.D.	Social Sciences and Philosophy	School of Social Sciences, University of Manchester, U.K.
Dr M. Siles	M.Litt.	Social Sciences and Philosophy	Dept. of Economics, N.U.I. Galway
Prof. R. Portes	Ph.D.	Social Sciences and Philosophy	London Business School, U.K.
Dr D. Phinnemore	Ph.D.	Social Sciences and Philosophy	School of Politics, Queen's University Belfast, Northern Ireland, U.K.
Prof. N. McDonald	Ph.D.	Social Sciences and Philosophy	Dept. of Politics and International Studies, University of Warwick, Coventry, U.K.

Prof. T. Inglis	Ph.D.	Social Sciences and Philosophy	School of Sociology, U.C.D.
Prof. N. Crossley	Ph.D.	Social Sciences and Philosophy	School of Social Sciences, University of Manchester, U.K.
Prof. R. Johnston	Ph.D.	Social Sciences and Philosophy	School of Geographical Sciences, University of Bristol, U.K.
Prof. C. Fagan	Ph.D.	Social Sciences and Philosophy	School of Social Sciences, University of Manchester, U.K.
Prof. E. Mansfield	Ph.D.	Social Sciences and Philosophy	Dept. of Political Science, University of Pennsylvania, Philadelphia, U.S.A.
Prof. W. Yu	Ph.D.	Social Sciences and Philosophy	Institute of Food and Resource Economics, University of Copenhagen, Denmark
Prof. K. Thompson	Ph.D.	Social Sciences and Philosophy	Dept. of Geography and Environment, University of Aberdeen, Scotland, U.K.
Dr P. Schiraldi	Ph.D.	Social Sciences and Philosophy	Dept. of Economics, London School of Economics, U.K.
Prof. B. McCormack	Ph.D.	Social Work and Social Policy	Institute of Nursing Research, University of Ulster, Northern Ireland, U.K.
Prof. J. Clarke	Ph.D.	Social Work and Social Policy	Faculty of Social Sciences, The Open University, Milton Keynes, U.K.
Prof. I. Katz	M.Litt.	Social Work and Social Policy	Social Policy Research Centre, University of New South Wales, Australia
Ms. L. Sapouna	M.Litt.	Social Work and Social Policy	School of Applied Social Sciences, U.C.C.
Prof. B. Daniel	Ph.D.	Social Work and Social Policy	Dept. of Applied Social Sciences, University of Stirling, Scotland, U.K.
Dr T. Spratt	Ph.D.	Social Work and Social Policy	School of Social Work, Sociology and Social Policy, Queen's University Belfast, Northern Ireland, U.K.
Dr R. Lart	Ph.D.	Social Work and Social Policy	School of Policy Studies, University of Bristol, U.K.
Dr M. Adshead	M.Litt.	Social Work and Social Policy	Dept. of Politics and Public Administration, University of Limerick
Prof. D. Walsh	Ph.D.	Social Work and Social Policy	School of Law, University of Limerick
Dr S. Kilcommins	Ph.D.	Social Work and Social Policy	School of Law, U.C.C.
Dr R. Davidson	M.Litt.	Social Work and Social Policy	TMR Health Professionals, Belfast, Northern Ireland, U.K.
Faculty of Health Sciences			
Name	Degree	School	Academic Address
Prof. C. Deery	D.Dent.Ch.	Dental Science	School of Clinical Dentistry, University of Sheffield, U.K.
Dr A. McDonald	D.Dent.Ch.	Dental Science	Prosthodontic Unit, UCL Eastman Dental Institute, London, U.K.
Dr C. Irwin	Ph.D.	Dental Science	School of Dentistry, Queen's University Belfast, Northern Ireland, U.K.
Prof. F. Odds	Ph.D.	Dental Science	Institute of Medical Sciences, Aberdeen, Scotland, U.K.
Prof. J. Bagg	Ph.D.	Dental Science	Glasgow Dental Hospital and School, Scotland, U.K.
Prof. J. Wennstrom	D.Dent.Ch.	Dental Science	Institute of Odontology, University of Gothenburg, Sweden
Dr C. Munro	Ph.D.	Dental Science	School of Medical Sciences, University of Aberdeen, Scotland, U.K.
Prof. B. Darvell	Ph.D.	Dental Science	Faculty of Dentistry, Kuwait University
Prof. A. Walmsley	Ph.D.	Dental Science	School of Dentistry, University of Birmingham, U.K.
Prof T. Eisen	Ph.D.	Medicine	Dept. of Oncology, University of Cambridge, U.K.
Prof. M. Good	Ph.D.	Medicine	School of Psychology, Cardiff University, Wales, U.K.
Dr M. Taylor	Ph.D.	Medicine	Dept. of Occupational Therapy, Coventry University, U.K.
Dr M. Timms	Ph.D.	Medicine	Centre for Disability Studies, U.C.D.
Dr J. Price	Ph.D.	Medicine	Belfast City Hospital, Northern Ireland, U.K.
Dr J. Goh	Ph.D.	Medicine	Gastrointestinal Unit, University Hospital Birmingham, U.K.

Prof. I. Hann	Ph.D.	Medicine	Paediatric Haematology and Oncology, Bayer PLC, Berkshire, U.K.
Prof. M. Cormican	M.Sc.	Medicine	Dept. of Microbiology, N.U.I. Galway
Prof. J. Hegarty	M.D.	Medicine	St. Vincent's Hospital, Dublin
Dr M. Roberts	M.D.	Medicine	Regional Medical Cardiology Centre, Royal Victoria Hospital, Belfast, Northern Ireland, U.K.
Dr D. McEneaney	M.D.	Medicine	Cardiac Unit, Craigavon Area Hospital, Co. Armagh, Northern Ireland, U.K.
Prof. T. Duka	Ph.D.	Medicine	School of Biological Sciences, University of Sussex, U.K.
Prof. P. Passmore	M.D.	Medicine	Dept. of Geriatric Medicine, Queen's University Belfast, Northern Ireland, U.K.
Dr C. Benton	M.D.	Medicine	Dept. of Dermatology, University of Edinburgh, Scotland, U.K.
Prof. A. Hill	M.D.	Medicine	Dept. of Surgery, Beaumont Hospital, Dublin
Prof. H. Redmond	M.D.	Medicine	Surgical Professional Unit, Cork University Hospital
Dr D. Simpson	Ph.D.	Medicine	Institute of Sound and Vibration Research, University of Southampton, U.K.
Prof. G. Callagy	Ph.D.	Medicine	Division of Histopathology, N.U.I. Galway
Dr G. Andrews	Ph.D.	Medicine	School of Pharmacy, Queen's University Belfast, Northern Ireland, U.K.
Prof. F. Megraud	Ph.D.	Medicine	Laboratoire de Bacteriologie, C.H.U. Pellegrin, Bordeaux, France
Prof. M. Prentice	M.D.	Medicine	Dept. of microbiology, U.C.C.
Mr. P. Sweeney	M.D.	Medicine	Dept. of Urology, Mercy Hospital, U.C.C.
Prof. D. McCormack	M.Ch.	Medicine	Dept. of Orthopaedic Surgery, Mater Hospital, Dublin
Dr L. Parkes	Ph.D.	Medicine	Imaging Sciences, University of Manchester, U.K.
Prof. R. Costello	M.Sc.	Medicine	Beaumont Hospital Private Clinic, Dublin
Prof. N. Caplice	M.D.	Medicine	Centre of Research in Vascular Biology, N.U.I. Cork
Prof. A. Samali	Ph.D.	Medicine	School of Natural Sciences, N.U.I. Galway
Dr S. Allan	Ph.D.	Medicine	Faculty of Life Sciences, University of Manchester, U.K.
Dr F. Horgan	Ph.D.	Medicine	School of Physiotherapy, Royal College of Surgeons in Ireland, Dublin
Prof. M. Reilly	Ph.D.	Medicine	University of Pennsylvania Medical Centre, U.S.A.
Prof. J. Bannigan	M.Sc.	Medicine	School of Medicine and Medical Sciences, U.C.D.
Dr J. Alvarez	Ph.D.	Medicine	Instituto de Neurociencias, Universidad Autónoma de Barcelona, Spain
Dr C. Sánchez	Ph.D.	Medicine	Dept. of Biochemistry and Molecular Biology, Complutense University, Madrid, Spain
Dr J. Teeling	Ph.D.	Medicine	School of Biological Sciences, University of Southampton, U.K.
Prof. T. Bourgeron	Ph.D.	Medicine	Human Genetics and Cognitive Functions, Institut Pasteur, Paris, France
Dr N. Sibson	Ph.D.	Medicine	Dept. of Physiology, Anatomy and Genetics, University of Oxford, U.K.
Dr A. McCann	Ph.D.	Medicine	College of Life Sciences, U.C.D.
Prof. K. Honn	M.Sc.	Medicine	Dept. of Radiation Oncology and Pathology, Wayne State University, Detroit, U.S.A.
Dr J. Bruton	M.Sc.	Medicine	Dept. of Physiology and Pharmacology, Karolinska Institute, Stockholm, Sweden
Prof. P. Bradding	M.D.	Medicine	Dept. of Respiratory Medicine, Glenfield Hospital, Leicester, U.K.
Prof. E. Kay	Ph.D.	Medicine	Dept. of Histopathology, Beaumont Hospital, Dublin
Prof. F. Karlsen	Ph.D.	Medicine	University College in Vestfold, Norway

Dr J. O'Connor	Ph.D.	Medicine	School of Biomolecular and Biomedical Sciences, U.C.D.
Dr J. McEneny	Ph.D.	Medicine	Centre for Public Health, Queen's University Belfast, Northern Ireland, U.K.
Prof. I. Perry	Ph.D.	Medicine	Dept. of Epidemiology and Public Health, U.C.C.
Dr M. Cupples	Ph.D.	Medicine	Dept. of General Practice, Dunluce Health Centre, Belfast, Northern Ireland, U.K.
Prof. G. Watt	Ph.D.	Medicine	General Practice and Primary Care, University of Glasgow, Scotland, U.K.
Dr S. Laye	Ph.D.	Medicine	Laboratoire PsyNuGen, Université Bordeaux, France
Dr B. McGuire	Ph.D.	Medicine	Dept. of Psychology, N.U.I. Galway
Prof T. Ng	Ph.D.	Medicine	Randall Division of Cell and Molecular Biophysics, King's College London, U.K.
Prof. H. Humphreys	M.D.	Medicine	Dept. of Clinical Microbiology, Beaumont Hospital, Dublin
Dr M. Raab	M.D.	Medicine	Dept. of Haematology-Oncology, University of Heidelberg, Germany
Dr K. Sweeney	M.D.	Medicine	Dept. of Surgery, University Hospital Galway
Dr M. Mitrakou	Ph.D.	Medicine	Dept. of Clinical Therapeutics, University of Athens, Greece
Prof. F. Dela	Ph.D.	Medicine	Centre for Healthy Ageing, University of Copenhagen, Denmark
Prof. M. Eklund	M.Sc.	Medicine	Dept. of Occupational Therapy, Lund University, Sweden
Dr M. Van Den Akker	M.Sc.	Medicine	Dept. of General Practice, Maastricht University, The Netherlands
Dr A. Gilliland	M.Sc.	Medicine	Dept. of General Practice, Queen's University Belfast, Northern Ireland, U.K.
Dr V. Williams	M.Sc.	Nursing and Midwifery Studies	Norah Fry Research Centre, Bristol University, U.K.
Prof. M. Kirkham	Ph.D.	Nursing and Midwifery Studies	School of Nursing and Midwifery, Sheffield Hallam University, U.K.
Dr J. McCarthy	Ph.D.	Nursing and Midwifery Studies	School of Nursing and Midwifery, U.C.C.
Dr M. Butler-Worth	Ph.D.	Nursing and Midwifery Studies	School of Nursing, Midwifery and Health Systems, U.C.D.
Dr P. Kenny	Ph.D.	Pharmacy and Pharmaceutical Sciences	School of Chemical Sciences, D.C.U.
Dr P. Cummins	Ph.D.	Pharmacy and Pharmaceutical Sciences	School of Biotechnology, D.C.U.
Prof. T. Malinski	Ph.D.	Pharmacy and Pharmaceutical Sciences	Dept. of Biochemistry, Ohio University, U.S.A.
Prof. C. Anderson	M.Sc.	Pharmacy and Pharmaceutical Sciences	School of Pharmacy, University of Nottingham, U.K.
Prof. S. Stanforth	Ph.D.	Pharmacy and Pharmaceutical Sciences	School of Applied Sciences, Northumbria University, Newcastle upon Tyne, U.K.
Dr B. Griffin	M.Sc.	Pharmacy and Pharmaceutical Sciences	School of Pharmacy, U.C.C.
Dr B. Larsen	Ph.D.	Pharmacy and Pharmaceutical Sciences	Faculty of Pharmaceutical Sciences, University of Copenhagen, Denmark
Prof. G. Wegener	Ph.D.	Pharmacy and Pharmaceutical Sciences	Centre for Psychiatric Research, Aarhus University, Denmark
Dr I. Lynch	Ph.D.	Pharmacy and Pharmaceutical Sciences	Centre for Bionano Interactions, U.C.D.
Prof. E. O'Shea	Ph.D.	Pharmacy and Pharmaceutical Sciences	Dept. of Farmacología, Universidad Complutense de Madrid, Spain
Faculty of Engineering, Mathematics and Science			
Name	Degree	School	Academic Address
Prof. S. Anderton	Ph.D.	Biochemistry and Immunology	Centre for Inflammation Research, University of Edinburgh, Scotland, U.K.
Dr M. Worrall	Ph.D.	Biochemistry and Immunology	School of Biomolecular and Biomedical Sciences, U.C.D.

Prof. Dr V. Schijns	Ph.D.	Biochemistry and Immunology	Cell Biology and Immunology Group, Wageningen University, The Netherlands
Prof. B. Gran	Ph.D.	Biochemistry and Immunology	Division of Clinical Neurology, University of Nottingham, U.K.
Prof. C. Breslin	M.Sc.	Biochemistry and Immunology	Chemistry Department, N.U.I. Maynooth, Co. Kildare
Prof. C. Wathes	Ph.D.	Biochemistry and Immunology	Royal Veterinary College, Herts, U.K.
Dr M. Carty	Ph.D.	Biochemistry and Immunology	Dept. of Biochemistry, N.U.I. Galway
Dr M. Keoghan	Ph.D.	Biochemistry and Immunology	Dept. of Immunology, Beaumont Hospital, Dublin
Dr F. Radow	Ph.D.	Biochemistry and Immunology	MRC Laboratory of Molecular Biology, Cambridge, U.K.
Dr Mark Lindsay	Ph.D.	Biochemistry and Immunology	Heart and Lung Institute, Imperial College London, U.K.
Prof. J. Gordon	Ph.D.	Biochemistry and Immunology	MRC Centre for Immune Regulation, University of Birmingham, U.K.
Prof. C. Vilches	Ph.D.	Biochemistry and Immunology	Universidad Autónoma de Madrid, Spain
Prof. R. Boomsma	Ph.D.	Biochemistry and Immunology	Cardiovascular Research Laboratory, Rotterdam, The Netherlands
Dr A. Kis	Ph.D.	Chemistry	Laboratory of Nanoscale Electronics and Structures, Ecole Polytechnique Fédérale de Lausanne, Switzerland
Prof. C. Birkenshaw	Ph.D.	Chemistry	Dept. of Materials Science and Technology, University of Limerick
Prof. C. Moody	Ph.D.	Chemistry	Dept. of Chemistry, University of Nottingham, U.K.
Dr T. Smyth	Ph.D.	Chemistry	School of Chemical and Environmental Sciences, University of Limerick
Dr R. Jackson	Ph.D.	Chemistry	School of Physical and Geographical Sciences, Keele University, U.K.
Dr K. Nolan	M.Sc.	Chemistry	School of Chemical Sciences, D.C.U.
Dr G. Morgan	Ph.D.	Chemistry	School of Chemistry and Chemical Biology, U.C.D.
Prof. A. Vicek	Ph.D.	Chemistry	School of Biological and Chemical Sciences, Queen Mary University of London, U.K.
Dr D. McCormack	Ph.D.	Chemistry	School of Chemical and Pharmaceutical Sciences, D.I.T.
Dr J. Holmes	Ph.D.	Chemistry	Dept. of Chemistry, U.C.C.
Dr T. James	Ph.D.	Chemistry	Chemistry Department, University of Bath, U.K.
Prof. P. Kelly	Ph.D.	Computer Science and Statistics	Dept. Of Computing, Imperial College London, U.K.
Prof. A. Kotov	Ph.D.	Computer Science and Statistics	Biomedical Engineering Department, University of Michigan, U.S.A.
Mr. H. McCabe	M.Sc.	Computer Science and Statistics	Dept. of Informatics, Blanchardstown Institute of Technology, Dublin
Dr K. Tuyls	Ph.D.	Computer Science and Statistics	Dept. of Knowledge Engineering, Maastricht University, The Netherlands
Prof. F. Brazier	Ph.D.	Computer Science and Statistics	Faculty of Technology, Policy Management, Delft University of Technology, The Netherlands
Prof. J. Decotignie	Ph.D.	Computer Science and Statistics	Laboratory of Systemic Modeling, Ecole Polytechnique Fédérale de Lausanne, Switzerland
Prof. J. Jezequel	Ph.D.	Computer Science and Statistics	Triskell Team, Université de Rennes I, France
Prof. T. D'Hondt	Ph.D.	Computer Science and Statistics	Computer Science Department, Vrije University, Brussels, Belgium
Dr A. Schmidt	Ph.D.	Computer Science and Statistics	Computer Science Department, University of Munich, Germany
Dr G. O'Hare	Ph.D.	Computer Science and Statistics	Dept. of Computer Science, U.C.D.
Prof. G. Di Marzo Serugendo	Ph.D.	Computer Science and Statistics	Computer Science and Information Systems, Birkbeck University of London, U.K.
Prof. K. De Bosschere	Ph.D.	Computer Science and Statistics	Elektronica en Informatie Systemen, Universiteit Gent, Belgium

Prof. J. Talmon	Ph.D.	Computer Science and Statistics	School of Primary Care and Public Health, University of Maastricht, The Netherlands
Prof. Y. Cheung	Ph.D.	Computer Science and Statistics	Dept. of Electrical and Electronic Engineering, Imperial College London, U.K.
Dr N. Hurley	Ph.D.	Computer Science and Statistics	School of Computer Science and Statistics, U.C.D.
Prof. A. Loveless	Ph.D.	Computer Science and Statistics	School of Education, University of Brighton, U.K.
Prof. P. Dillenbourg	Ph.D.	Computer Science and Statistics	École Polytechnique Fédérale de Lausanne, France
Prof. H. Davis	Ph.D.	Computer Science and Statistics	School of Electronics and Computer Science, University of Southampton, U.K.
Dr J. Carty	M.Sc.	Computer Science and Statistics	School of Computer Science and Informatics, U.C.D.
Prof. H. Hamilton	M.Sc.	Computer Science and Statistics	Dept. of Computer Science, University of Regina, Canada
Dr T. Dowling	Ph.D.	Computer Science and Statistics	Dept. of Computer Science, N.U.I. Maynooth, Co. Kildare
Dr P. Markopoulos	Ph.D.	Computer Science and Statistics	Eindhoven University of Technology, The Netherlands
Dr N. Winters	Ph.D.	Computer Science and Statistics	London Knowledge Lab, U.K.
Prof. A. Daly	Ph.D.	Computer Science and Statistics	Dept. of Computing Sciences, University of East Anglia, Norwich, U.K.
Prof. S. Nilsson	Ph.D.	Computer Science and Statistics	KTH Royal Institute of Technology, Stockholm, Sweden
Dr R. Hinze	Ph.D.	Computer Science and Statistics	Computing Laboratory, University of Oxford, U.K.
Dr E. Lyon	Ph.D.	Engineering	Sonic Arts Research Centre, Queen's University Belfast, Northern Ireland, UK
Dr M. Wilson	Ph.D.	Engineering	Graduate School of Creative Arts and Media, National College of Art and Design, Dublin
Prof. M. McDonald	Ph.D.	Engineering	Dept. of Civil Engineering and the Environment, University of Southampton, U.K.
Dr D. Finn	Ph.D.	Engineering	School of Electrical, Electronic and Mechanical Engineering, U.C.D.
Dr. P. Ibanez	Ph.D.	Engineering	Plataforma Solar de Almería, Spain
Prof. R. Bisseling	Ph.D.	Engineering	Mathematical Institute, Utrecht University, The Netherlands
Prof. J. Cotton	M.Sc.	Engineering	Dept. of Mechanical Engineering, McMaster University, Ontario, Canada
Dr R. Farrell	M.Sc.	Engineering	Dept. of Electronic Engineering, N.U.I. Maynooth, Co. Kildare
Dr N. Goldscheider	Ph.D.	Engineering	Centre d'Hydrogéologie, Université de Neuchatel, Switzerland
Prof. P. Younger	Ph.D.	Engineering	Newcastle Institute for Research on Sustainability, Newcastle University, U.K.
Mr. M. Welsh	Ph.D.	Engineering	School of Engineering and Applied Sciences, Harvard University, Cambridge, U.S.A.
Dr M. Long	M.Sc.	Engineering	School of Architecture, Landscape and Civil Engineering, U.C.D.
Prof. J. Smith	Ph.D.	Engineering	CIS Department, University of Pennsylvania, U.S.A.
Prof. J. Slayton	Ph.D.	Engineering	School of Art and Design, San José State University, California, U.S.A.
Prof. F. Migliavacca	Ph.D.	Engineering	Structural Engineering Department, Politecnico di Milano, Italy
Prof. R. Camussi	Ph.D.	Engineering	Dipartimento Ingegneria Meccanica e Industriale, Università Roma Tre, Italy
Prof. M. Carey	Ph.D.	Engineering	School of Management and Economics, Queen's University Belfast, Northern Ireland, U.K.
Dr. L. McNamara	Ph.D.	Engineering	Dept. of Mechanical and Biomedical Engineering, N.U.I. Galway

Prof. A. Hilton	Ph.D.	Engineering	School of Electronics and Physical Sciences, University of Surrey, U.K.
Dr L. Looney	M.Sc.	Engineering	School of Mechanical and Manufacturing Engineering, D.C.U.
Dr D. Murphy	Ph.D.	Engineering	Dept. of Electronics, University of York, U.K.
Dr J. Lasenby	Ph.D.	Engineering	Dept. of Engineering, University of Cambridge, U.K.
Prof. I. Catton	Ph.D.	Engineering	Dept. of Mechanical and Aerospace Engineering, University of California, U.S.A.
Dr A. Fitzgibbon	Ph.D.	Engineering	Microsoft Research Ltd., Cambridge, U.K.
Dr J. Stokes	M.Sc.	Engineering	School of Mechanical and Manufacturing Engineering, D.C.U.
Dr P. Young	M.Sc.	Engineering	Dept. of Mechanical and Manufacturing Engineering, D.C.U.
Dr P. Connolly	M.Sc.	Engineering	School of Electrical, Electronic and Mechanical Engineering, U.C.D.
Prof. J. Currey	Sc.D.	Engineering	Dept. of Biology, University of York, U.K.
Prof. D. Kohn	Sc.D.	Engineering	Dept. of Biologic and Materials Sciences and Dept. of Biomedical Engineering, University of Michigan, U.S.A.
Dr M. Richardson	Ph.D.	Engineering	School of Architecture, Landscape and Civil Engineering, U.C.D.
Dr C. Bleakley	Ph.D.	Engineering	School of Computer Science and Informatics, U.C.D.
Dr A. Wadee	Ph.D.	Engineering	Dept. of Civil and Environmental Engineering, Imperial College London, U.K.
Dr G. Biagini	Ph.D.	Genetics and Microbiology	Liverpool School of Tropical Medicine, U.K.
Prof. C. Spillane	M.Sc.	Genetics and Microbiology	Dept. of Biochemistry and Biosciences, U.C.C.
Dr C. O'Kane	Ph.D.	Genetics and Microbiology	Dept. of Genetics, University of Cambridge, U.K.
Prof. T. Mitchell	Ph.D.	Genetics and Microbiology	Glasgow Biomedical Research Centre, University of Glasgow, Scotland, U.K.
Prof. C. Borner	Ph.D.	Genetics and Microbiology	Institute of Molecular Medicine and Cell Research, Albert-Ludwigs-University of Freiburg, Germany
Prof. A. Villunger	Ph.D.	Genetics and Microbiology	Division of Molecular Pathophysiology, Innsbruck Medical University, Austria
Prof. P. Gilmartin	Ph.D.	Genetics and Microbiology	School of Biological and Biomedical Sciences, Durham University, U.K.
Dr D. Barker	Ph.D.	Genetics and Microbiology	School of Biology, University of St. Andrews, Fife, Scotland, U.K.
Prof. P. Kaiser	Ph.D.	Genetics and Microbiology	Institute for Animal Health, Berkshire, U.K.
Dr C. Condon	Ph.D.	Genetics and Microbiology	Institut de Biologie Physico-Chimique, CNRS UPR, Paris, France
Prof. J. Fazakerley	Ph.D.	Genetics and Microbiology	College of Medicine and Veterinary Medicine, University of Edinburgh, Scotland, U.K.
Prof. A. Hanany	M.Sc.	Mathematics	Physics Department, Imperial College London, U.K.
Prof. W. Nahm	M.Sc.	Mathematics	DIAS, Dublin
Prof. I. Brunner	Ph.D.	Mathematics	Arnold Sommerfeld Center for Theoretical Physics, Munich, Germany
Dr R. Kolliker	Ph.D.	Natural Sciences	Agroscope Reckenholz-Tanikon, Zurich, Switzerland
Prof. J. Walsh	Ph.D.	Natural Sciences	School of Geological Sciences, U.C.D.
Prof. G. Walkden	Ph.D.	Natural Sciences	Dept. of Geology and Petroleum Geology, University of Aberdeen, Scotland, U.K.
Prof. L. Sandin	Ph.D.	Natural Sciences	Swedish University of Agricultural Sciences, Uppsala, Sweden
Prof. J. Gunn	Ph.D.	Natural Sciences	School of Geography, University of Birmingham, U.K.
Prof. Dr G. Worner	Ph.D.	Natural Sciences	Dept. Of Geochemistry, Universitat Gottingen, Germany

Prof. A. Knud Roepstorff	Ph.D.	Natural Sciences	Danish Centre for Experimental Parasitology, University of Copenhagen, Denmark
Dr C. Hollis	Ph.D.	Natural Sciences	School of Earth, Atmospheric and Environmental Sciences, University of Manchester, U.K.
Dr M. Cawley	Ph.D.	Natural Sciences	Dept. of Geography, N.U.I. Galway
Prof. S. Ormerod	Ph.D.	Natural Sciences	School of Biosciences, Cardiff University, Wales, U.K.
Dr W. Austin	Ph.D.	Natural Sciences	School of Geography and Geosciences, University of St. Andrews, Scotland, U.K.
Prof. K. Higgs	Ph.D.	Natural Sciences	Geology Department, U.C.C.
Dr B. Heinze	Ph.D.	Natural Sciences	Dept. of Genetics, Research and Training Centre for Forests, Natural Hazards and Landscape (BFW) Vienna, Austria
Prof. P. Ineson	Ph.D.	Natural Sciences	Biology Department, University of York, U.K.
Prof. C. Frid	Ph.D.	Natural Sciences	School of Biological Sciences, University of Liverpool, U.K.
Prof. T. Roper	Ph.D.	Natural Sciences	Dept. of Biology and Environmental Sciences, University of Sussex, U.K.
Dr. R. Katz	Ph.D.	Natural Sciences	Dept. of Earth Sciences, Oxford University, U.K.
Prof. A. Tibaldi	Ph.D.	Natural Sciences	Dept. of Geological Sciences and Geotechnologies, University of Milan-Bicocca, Italy
Prof. T. Vennemann	Ph.D.	Natural Sciences	Institute of Mineralogy and Geochemistry, University of Lausanne, Switzerland
Prof. P. Van Welzen	Ph.D.	Natural Sciences	National Herbarium of the Netherlands, Leiden, The Netherlands
Dr B. Pickersgill	Ph.D.	Natural Sciences	School of Biological Sciences, University of Reading, U.K.
Prof. U. Strohmayer	Ph.D.	Natural Sciences	Dept. of Geography, N.U.I. Galway
Prof. R. Bradshaw	Ph.D.	Natural Sciences	Dept. of Geography, University of Liverpool, U.K.
Prof. C. Archer	Ph.D.	Natural Sciences	Cardiff School of Biosciences, Wales, U.K.
Dr P. Hollingsworth	Ph.D.	Natural Sciences	Royal Botanic Gardens, Edinburgh, Scotland, U.K.
Dr D. Linehan	Ph.D.	Natural Sciences	Dept. of Geography, U.C.C.
Dr J. Rowan	Ph.D.	Natural Sciences	Dept. of Geography, University of Dundee, Scotland, U.K.
Dr J. Breen	M.Sc.	Natural Sciences	Dept. of Life Sciences, University of Limerick
Dr P. Breathnach	Ph.D.	Natural Sciences	Dept. of Geography, N.U.I. Maynooth, Co. Kildare
Prof. P. Smith	Ph.D.	Natural Sciences	School of Geography, Earth and Environmental Sciences, University of Birmingham, U.K.
Dr S. Pankhurst	Ph.D.	Natural Sciences	Dept. of Life Sciences, Anglia Ruskin University, Cambridge, U.K.
Prof. L. Kartbeek	Ph.D.	Natural Sciences	National Institute of Public Health and the Environment, Bilthoven, The Netherlands
Dr G. Smith	Ph.D.	Physics	School of Physics and Astronomy, University of St. Andrews, Scotland, U.K.
Dr H. Mason	Ph.D.	Physics	Centre for Mathematical Sciences, University of Cambridge, U.K.
Prof. B. Hickey	Ph.D.	Physics	School of Physics and Astronomy, University of Leeds, U.K.
Dr D. O'Mahony	M.Sc.	Physics	School of Physics, D.I.T.
Prof. Dr H. Salemink	Ph.D.	Physics	Dept. of Neurosciences, Delft University, The Netherlands
Prof. G. O'Sullivan	Ph.D.	Physics	School of Physics, U.C.D.
Dr M. Georgoulis	Ph.D.	Physics	RCAAM, Academy of Athens, Greece
Dr C. Simons	Ph.D.	Physics	Laboratoire CRISMAT, Caen, France
Prof. J. Costello	Ph.D.	Physics	School of Physical Sciences, D.C.U.
Prof. M. Alecci	Ph.D.	Physics	Faculty of Biotechnology, University L'Aquila, Italy

Dr R. Pollard	M.Sc.	Physics	Dept. of Physics and Astronomy, Queen's University Belfast, Northern Ireland, U.K.
Prof. W. Elsaesser	Ph.D.	Physics	Physics Department, Technical University of Darmstadt, Germany
Prof. G. Morthier	Ph.D.	Physics	Dept. of Information Technology, Ghent University, Belgium
Dr C. Fermon	Ph.D.	Physics	Institute CEA, Gif-sur-Yvette, France
Dr V. Toal	Ph.D.	Physics	Dept. of Physics, D.I.T.
Prof. A. Evans	Ph.D.	Physics	Institute of Mathematics and Physics, University of Aberystwyth, Wales, U.K.

Appendix 6: Taught Course External Examiners by Faculty 2009-2010

Faculty of Arts Humanities and Social Sciences		
<i>Course Coordinator/Director</i>	<i>External Examiners</i>	<i>From To</i>
Master in Business Administration (M.B.A) Mr. Vincent Dooley	Professor Bart Rosenbloom, Drexel University, PA, USA	2008-2011
	Professor Thomas Lawton, London, UK	2007-2010
Doctorate in Clinical Psychology (D.Clin.Psych) Dr. Kevin Tierney	Dr. Cynthia Graham, Warnsford Hosptial, Oxfordshire, UK	2009-2012
	Dr. Andrew Thompson, University of Sheffield, Sheffield, U8K	2008-2011
	Dr. Biza Stenfert Kroese, University of Birmingham, UK	2007-2013
Doctorate in Counselling Psychology (D.Couns.Psych.) Dr. Ladislav Timulak	Professor Mick Cooper, University of Strathclyde, Scotland	2009-2012
Professional Doctorate in Education (D.Ed.) Dr. Andrew Loxley	Professor Pat Sikes, University of Sheffield, Sheffield, UK	2007-2010
Doctorate in Political Science (M.Phil./Ph.D.) Dr. Gail Conroy	Professor Van de Eijk , University of Amsterdam, Amsterdam, The Netherlands	2007-2010
Master in Education (M.Ed./ P.Grad.Dip. Educational Studies) Dr. Aidan Seery / Mr Keith Johnston	Professor Andrew Hobson, University of Nottingham, Nottingham, UK	2007-2010
	Mr Gareth Parry, University of Ulster, Coleraine, N. Ireland	2007-2010
	Professor Constance Deuschle, Valpariso University, Indiana, USA	2009-2012
Master in Social Work (M.S.W.) Ms Maeve Foreman	Professor Vivienne Cree, University of Edinburgh, Edinburgh, Scotland	2009-2012
Master in Theology (M.Theol.) Revd. Dr. Maurice Elliott	Canon Dr. Christina Baxter, St. John's College, Nottingham, UK	2009-2012
Master in Laws (LL.M) Dr. Neville Cox	Professor Steven Hedley, University College Cork	2008-2011
	Professor Damian Chalmers, London School of Economics, London, UK	2007-2011
	Professor Conor Gearty, London School of Economics, London, UK	2006-2010
	Professor Sarah Worthington, London School of Economics, London, UK	2009-2012
M.Phil./P.Grad.Dip. in Anglo Irish Literature Professor Nicholas Grene	Professor Chris Morash, National University of Ireland, Maynooth	2008-2011
M.Phil./P.Grad.Dip. in Applied Linguistics Dr. Jeffrey Kallen	Professor Rosamond Mitchell, University of Southampton, Southampton, UK	2009-2012
	Professor Maggie Tallerman University of Newcastle, Newcastle, UK	2008-2011
M.Phil. Classics Dr. Claire Taylor	Professor Mark Humphries, University of Swansea, Swansea, UK	2008-2011
M.Phil. Comparative European Politics Dr. Robert Thompson	Dr. Michael Bruter, London School of Economics & Political Science, London, UK	2008-2011
M.Phil. in Comparative Literature Dr. Peter Arnds	Dr. Brigitte Le Juez, Dublin City University, Dublin	2009-2010
M.Phil. in Creative Writing Mr Gerald Dawe	Professor Andrew McNellie, University of Exeter, Cornwall, UK	2009-2012
M.Phil. in Early Irish Professor Damien McManus	Dr. Uaitear Mac Gearailt, Dublin City University, Dublin	2008-2011

M.Sc. in Economic Policy Studies Professor John O'Hagan	Professor Peter Jackson, University of Leicester, Leicester, UK	2008-2011
M.Phil./P.Grad.Dip. in English Language Teaching Dr. Jeffrey Kallen	Professor Christopher Kennedy, University of Birmingham, Birmingham, UK	2007-2010
M.Phil. in Ethnic and Racial Studies Dr. Ronit Lentin	Dr. Breda Gray, University of Limerick, Limerick	2007-2010
M.Phil. (Ecum.)/P.Grad.Dip. in Ecumenical Studies Dr. Andrew Pierce	Professor Paul Murray, University of Durham, Durham, UK	2008-2011
M.Phil. in European Studies Dr. Balazs Apor	Dr. Christian Noack, NUI Maynooth, Co. Kildare	2009-2012
M.Phil. in Film Theory & History Dr. Paula Quigley	Dr. Susan Smith, University of Sunderland, UK	2009-2012
M.Phil./P.Grad.Dip. in Gender & Women's Studies Dr. Maryann Valiulis	Professor Heidi Safia Mirza, University of London, London, UK	2008-2011
M.Phil./P.Grad.Dip. in German Literature with Language Pedagogy Dr. Gilbert Carr	Professor Andrew Barker, Division of European Languages & Cultures, Edinburgh, UK	2009-2012
M.Phil. in Irish Art History Dr. Yvonne Scott	Dr. Christa-Maria Lerm Hayes, University of Ulster, Belfast, N. Ireland	2007-2010
M.Phil. in Irish Film, Music & Theatre Dr. Melissa Sihra	Professor Anthony Roche, UCD, Dublin	2009-2012
M.Phil./P.Grad.Dip. in Linguistics Dr. Jeffrey Kallen	Professor Maggie Tallerman, University of Newcastle Upon Tyne, Newcastle, UK	2008-2011
M.Phil. in Literary Translation Dr. Susana Bayó Belenguer	Professor George Talbot, University of Hull, Hull, UK	2007-2010
M.Phil. in Literatures of the Americas Dr. Philip Coleman	Professor Susan Castillo, Kings College, London, UK	2007-2010
M.Phil. in Medieval History Dr. Katherine Simms	Dr. Julia Barrow, University Park, Nottingham, UK	2008-2011
M.Phil. in Medieval Language, Literature and Culture Professor Eilean Ni Chuilleanain	Dr. Helen Phillips, University of Cardiff, Cardiff, UK	2007-2010
M.Phil./P.Grad.Dip. in Modern Irish History Dr. Anne Dolan	Dr. Margaret O'Callaghan, Queens University, Belfast, N. Ireland	2008-2011
M.Phil. (Peace Studies)/P.Grad.Dip. in Peace Studies Dr. Ian Atask	Professor Tom Lodge., University of Limerick, Limerick	2008-2011
	Professor Beverly Milton Edwards., Queens University, Belfast, N. Ireland	2007-2010
	Professor Luc Reyckler, University of Leuven, Leuven, Belgium	2009-2012
M.Phil. in Popular Literature Dr. Darryl Jones	Professor Keith Williams, University of Dundee, Dundee, UK	2008-2011
M.Phil./P.Grad.Dip. in Psychoanalytic Studies Dr. Ross Skelton	Dr. Werner Proll, Middlesex University, London, UK	2009-2012
M.Phil./P.Grad.Dip. in Reconciliation Studies Mr David Tombs	Dr. Claire Mitchell, Queens University, Belfast, N. Ireland	2008-2011
	Dr. Michael Hayes, St. Mary's University College, Twickenham, UK	2009-2012
M.Phil./P.Grad.Dip. in Reformation and Enlightenment Studies Dr. Graeme Murdock	Dr. Elaine Fulton, University of Birmingham, Birmingham, UK	2009-2012
M.Phil./P.Grad.Dip. in Speech and Language Processing Dr. Jeffrey Kallen	Professor Anna Maria Laukkanen, University of Tampere, Finland	2009-2012
M.Phil. Textual & Visual Studies Professor Johnnie Gratton/Professor David Scott	Professor Susan Harrow, University of Bristol, Bristol, UK	2009-2012
M.Phil. in Theatre & Performance Dr. Melissa Sihra/Dr. Eric Weitz	Professor Martin White, University of Bristol, Bristol, UK	2009-2012

M.Sc. in Applied Psychology Dr. Tim Trimble	Dr. Ken Gannon, University of East London, London, UK	2009-2012
M.Sc. in Psychology (Applied Behaviour Analysis) Dr. Maeve Bracken	Dr. Veronica Cullinan, Mary Immaculate College, University of Limerick, Limerick	2008-2011
M.Sc. in Applied Social Research Dr. Evelyn Mahon	Professor Colin Mills, Nuffield College, Oxford, UK	2007-2010
M.Sc. in Clinical Speech and Language Studies Dr. Margaret Walshe, Dr. Margaret Leahy	Professor Fiona Gibbon, University College, Cork	2009-2012
M.Sc. in Clinical Supervision Ms Mary Creaner	Dr. Maja O'Brien, Oxford, UK	2008-2011
M.Sc. in Drug & Alcohol Policy Dr. Shane Butler	Professor Karen Duke, Middlesex University, Middlesex, UK	2008-2011
M.Sc./P.Grad.Dip. in Economics Dr. Carol Newman	Professor Candice Prendergast, University of Chicago, Chicago, USA.	2007-2010
M.Sc. (Mgmt) Business Administration Professor Mary Rose Greville	Professor Andrew Kakabadse, Cranfield University, UK	2009-2010
M.Sc. Economic Policy Studies Professor John O'Hagan	Professor Peter Jackson, University of Leicester, Leicester, UK	2008-2012
M.Sc. in Finance Professor Brian Lucey	Professor Angela Black, University of Aberdeen, Aberdeen, UK	2008-2011
M.Sc. (Mgmt) International Business Programme Dr. John Quilliam	Professor Hugh O'Neill, University of North Carolina at Chapel Hill, North Carolina, USA	2007-2010
M.Sc. in International Management Dr. Mary Rhodes	Professor Dr. Niels Angermuller, Harz University, Germany	2009-2012
M.Sc. (Mgmt) Management Practice Dr. Anthony Drumgoole	Professor Steve Armstrong, University of Hull, Hull, UK	2007-2010
M.Sc. (Mgmt) Organisational Behaviour Mr Andrew McLaughlin	Professor Patrick Flood, Dublin City University, Dublin.	2007-2010
M.Sc. (Mgmt) Strategic Management Professor John Murray	Professor Cliff Bowman, Cranfield School of Management, Bedfordshire, UK	2007-2010
M.St. (Master of Studies) St. Stephen Minton	Dr. Josephine Boland, NUI, Galway	2008-2011
P.Grad.Dip./M.Sc. in Child Protection and Welfare Dr. Helen Buckley	Professor Dorothy Scott, University of South Australia, Australia	2007-2010
P.Grad.Dip./M.Phil. in Music and Media Technologies Dr. Fionnuala Conway	Dr. Eric Lyon, Queens University, Belfast, N. Ireland	2008-2011
P.Grad.Dip. in Applied Behaviour Analysis Dr. Rita Honan	Dr. Geraldine Leader, National University of Ireland, Galway	2007-2010
P.Grad.Dip. in Clinical Speech and Language Studies (Dysphasia) Dr. Margaret Walshe, Ms Margaret Leahy	Dr. Nathaniel Rommel, University of Leuven, Leuven, Belgium	2008-2011
P.Grad.Dip. in Clinical Supervision Ms Mary Creaner	Dr. Mary Ryan, National University Of Ireland, Maynooth, Co. Kildare	2007-2010
P.Grad.Dip. in Conflict and Dispute Resolution Studies Ms Paulyn Marrinan Quinn	Professor Andrew Williams, University of St. Andrews, Fife, UK	2008-2011
P. Grad Dip. In Continuing Professional Development Dr. Carmel O'Sullivan	Dr. Colette Murphy, Queen's University, Belfast, N. Ireland	2009-2012
P.Grad.Dip. in Education Dr. David Limond	Professor Gerry McNamara, Dublin City University, Dublin	2007-2010
PG Diploma in In-Service Education Dr. Andrew Loxley & Dr. Stephen Minton	Ms. Angi Malderez, University of Leeds, Leeds, UK	2007-2010
P.Grad.Dip. in Management Dr. Robert Galavan	Professor Cliff Bowman, Cranfield University, Bedfordshire, UK	2007-2010

Higher Diploma in Education (Primary Teaching) Mr Pdraig De Bhal	Dr. Catherine Furlong, St. Patrick College, Dublin City University	2007-2010
Higher Diploma in Psychology Dr. Jean Quigley	Professor Roderick Cowie, Queens University, Belfast, N. Ireland	2009-2012
Faculty of Engineering, Mathematics and Science		
M.Phil. Music & Media Technology Dr. Fionnuala Conway	Dr. Eric Lyon, Queens University Belfast, Belfast, N. Ireland	2008-2011
M.Sc./P.Grad.Dip. Biodiversity and Conservation Dr. Stephen Waldren	Professor Robert Marrs, University of Liverpool, Liverpool, UK	2007-2010
M.Sc./P.Grad.Dip. in Bioengineering Professor Richard Reilly	Professor Bart Verkerke, University Medical Centre Groningen, Groningen, The Netherlands	2009-2012
M.Sc./P.Grad.Dip. in Civil Engineering Dr. Brendan O'Kelly	Professor Thomas Curtis, Newcastle Upon Tyne University, Newcastle, UK	2008-2011
M.Sc./P.Grad.Dip. in Computer Science (Interactive Entertainment Technology) Dr. Steven Collins	Professor Philipp Slusallek, Saarland University, Saarbrücken, Germany	2007-2010
M.Sc./P.Grad.Dip. in Computer Science (Mobile & Ubiquitous) Dr. Stefan Weber	Professor Christian Becker, University of Mannheim, Mannheim, Germany	2009-2012
M.Sc./P.Grad.Dip. in Computer Science (Network and Distributed Systems) Dr. Siobhan Clarke	Professor Jeff Magee, Imperial College, London, UK	2007-2010
M.Sc./P.Grad.Dip. in Environmental Sciences Dr. Robin Edwards	Professor Stephen Hawkins, Marine Biological Assoc. of the United Kingdom, Plymouth, UK	2007-2010
M.Sc. in Environment & Development Dr. Clionadh Raleigh	Professor Anthony Bebbington, University of Manchester, UK	2009-2010
M.Sc./P.Grad.Dip. in High Performance Computing Dr. Michael Peardon	Dr. David Henty, University of Edinburgh, Edinburgh, UK	2008-2011
M.Sc./P.Grad.Dip. Management of Information Systems Dr. Allan Mullally & Dr. Frank Bannister	Professor Les Worrall, Coventry University, Coventry, UK	2008-2011
M.Sc. in Mechanical Engineering (Erasmus Mundus) Dr. Craig Meskell	Dr. Laurent Dala, University of West England, Bristol, UK	2008-2011
M.Sc. in Interactive Digital Media Professor Marie Redmond	Professor Mary Flanagan, Dartmouth College, NH, USA	2009-2012
M.Sc./P.Grad.Dip. in Technology and Learning Ms Anne Fitzgibbon	Professor Rose Luckin, University of London, London, UK	2007-2010
P.Grad.Dip. in Applied Building Repair and Conservation Dr. Sara Pavía	Ms. Aighleann O Shaughnessy, Heritage Service, Dun Sceine, Harcourt Lane, Dublin	2009/2010
P.Grad.Dip. in Construction Law and Contract Administration Dr. Niamh Harty	Mr. John Barber, Kings College London, London, UK	2009-2012
P.Grad.Dip. in Environmental Engineering Mr Paul Johnston	Dr. Adrian Butler, Imperial College, London, UK	2008-2011
P.Grad.Dip. in Fire Safety Practice (Buildings & Other Structures) Dr. Trevor Orr	Dr. Karen Boyce, University of Ulster at Jordanstown, Newbownabbey, N. Ireland	2009-2012
P.Grad.Dip./M.Sc. in Health Informatics Dr. Lucy Hederman	Professor Johan Van der Lei, Erasmus University Rotterdam, The Netherlands	2007-2010
P.Grad.Dip. in Health & Safety in Construction Dr. Niamh Harty	Mr Martin O' Halloran, CEO, Health & Safety Authority, Dublin	2007-2010
P.Grad.Dip. in Highway & Geotechnical Engineering Dr. Jim McElvaney	Professor Martin Snaith, University of Birmingham, Birmingham, UK	2008-2011
P.Grad.Dip. in Project Management Dr. Trevor Orr	Dr. Alan Hore, DIT, Bolton Street, Dublin	2008-2011

P.Grad.Dip. in Statistics Mr E Mullins	Dr. David Williams, University College Dublin	2009-2010
Faculty of Health Sciences		
D.Dent.Ch. in Oral Surgery Professor Leo Stassen	Professor Graham Ogden, University of Dundee, Dundee, UK	2009-2012
D.Dent.Ch. in Orthodontics Dr. Therese Garvey	Professor Fraser McDonald, Dental Institute, KCL, London, UK	2009-2012
D.Dent.Ch. in Paediatric Dentistry Dr. Anne O'Connell	Professor Christopher Deery, University of Sheffield, Sheffield, UK Professor Martin Kinirons, Cork Dental Hospital & School, Cork	2007-2010 2008-2011
D.Dent.Ch. in Periodontology Professor Noel Claffey	Professor Jan Wemstrom, University of Gothenburg, Gothenburg, Sweden	2008-2011
D.Dent.Ch. in Prosthodontics Professor Brian O'Connell	Professor Stephen Rosenstiel, Ohio State University, Ohio, USA	2007-2011
D.Dent.Ch. in Special Care Dentistry Professor June Nunn	Professor Sheelagh Thompson, Cardiff University, Cardiff, UK	2008-2011
M.Sc. in Cancer Care Dr. Elizabeth Curtis	Dr. Maura Dowling, NUI, Galway	2009-2012
M.Sc. Cardiovascular Rehabilitation & Prevention Dr. John Gormley	Dr. Catherine Blake, UCD, Dublin 4	2009-2012
M.Sc./P.Grad.Dip. in Clinical Chemistry Dr. Gerard Boran	Professor Ramasamyiyer Swaminathan, Guy's and St. Thomas' Hospitals Trust, London, UK	2009-2010
M.Sc./P.Grad.Dip. in Gerontological Nursing Ms Anna Watson	Professor Debbie Talson, Glasgow Caledonian University, Glasgow, Scotland	2009-2012
M.Sc. in Global Health Dr. Adebola Adedimeji	Professor Michael Reich, Harvard School of Public Health, Boston, USA	2008-2011
M.Sc. in Health Services Management Ms Eilish McAuliffe/Ms Mandy Lee	Professor Johan Calltorp, Repslagargatan 10a, Str., S-11846 Stockholm, Sweden	2009-2012
M.Sc. in Hospital Pharmacy Ms Niamh McMahon	Professor John Graham Davies, University of Brighton, Brighton, UK	2009-2014
M.Sc. in Medical Imaging Ms Bernadette Moran – Nuclear Medicine	Mr Kenneth Holmes, University of Cumbria, Lancaster, UK	2007-2010
M.Sc. in Medical Imaging – Nuclear Medicine Ms. Bernadette Moran	Mr. Kenneth Graham, University of Cumbria, Cumbria, UK	2007-2012
M.Sc. in Medical Imaging – Magnetic Resonance Imaging Ms. Bernadette Moran	Ms. Catherine Westbrook, Anglia Ruskin University, Cambridge, UK	2009 - 2014
M.Sc. in Mental Health Mr. Michael Brennan	Professor Patrick McCartan, Queens University, Belfast, N. Ireland	2007-2010
M.Sc. in Midwifery/ P.Grad.Dip. in Professional Midwifery Studies Dr. Elizabeth Curtis	Dr. Mary Steen-Greaves, University of Chester, Chester, UK	2009-2012
M.Sc. in Molecular Medicine Dr. Ross McManus/Professor Mark Lawler/ Dr. Aideen Long/Dr. Yuri Volkov	Profesor David Jackson, John Radcliffe Hospital, Oxford, UK	2008-2011
M.Sc. in Neuroscience Dr. Thomas Connor	Dr. Maeve Caldwell, University of Bristol, Bristol, UK	2009-2012
M.Sc. in Nursing/P.Grad.Dip. in Professional Nursing Studies Mr Tom Noone	Ms. Mary Watkins, University of Ulster, Newtownabbey, N. Ireland	2006-2010
M.Sc. in Nursing – Clinical Health Sciences Strand Ms. Anne-Marie Malone	Ms. Mary Watkins, University of Ulster, Jordanstown Campus, Co. Antrim, N. Ireland	2009-2010
M.Sc. in Nursing – General Nursing/Advanced Nurse Practitioner Strand Mr. Tom Noone	Ms. Marie Glackin, Queens University Belfast, Belfast, N. Ireland	2007-2010

M.Sc. in Occupational Therapy Ms Clodagh Nolan / Dr. Deirdre Connolly	Dr. Alison Porter Armstrong, University of Ulster, Jordanstown Campus, Co. Antrim, N. Ireland	2009-2012
M.Sc. in Physical Sciences in Medicine Professor Neil O'Hare/Dr. Gerard Boyle	Professor David Lurie, University of Aberdeen, Aberdeen, UK	2007-2010
M.Sc. / P.Grad.Dip. in Palliative Care Dr. Kenneth Connaire	Professor Jane Seymour, Queens Medical Centre, Nottingham, UK	2007-2010
M.Sc./P.Grad.Dip. in Pharmaceutical Analysis Dr. John Gilmer	Dr. Robert Williams, Enniskerry, Co. Wicklow	2008-2011
M.Sc./P.Grad.Dip. in Pharmaceutical Medicine Dr. Mary Teeling/Dr. Mary Jo MacAvin	Professor G. Dennis Johnston, Queen's University Belfast, Belfast, N. Ireland	2006-2010
M.Sc. in Pharmaceutical Technology Dr. Carsten Enhardt	Professor Rob Forbes, University of Bradford, Bradford, UK	2008-2011
M.Sc. in Respiratory Physiotherapy Dr. Juliette Hussey	Dr. Catherine Blake, University College, Dublin	2009-2012
M.Sc. in Sports Medicine Dr. Nicholas Mahony/Mr. Bernard Donne	Professor Domhnall MacAuley, University of Ulster, Belfast, N. Ireland Professor Per Renstrom, Hasselby, Sweden	2008-2011 2008-2011
P.Grad.Dip./M.Sc. in Community Pharmacy Dr. Sheila Ryder	Dr. Christopher Langley, Aston University, Birmingham, UK	2009-2013
P. Grad.Dip. in Conscious Dentistry Dr. Mary Clarke	Dr. Leslie Loughman, Freshfield, Merseyside, UK	2009-2012
P.Grad.Dip./M.Sc. in Exercise Physiology Dr. Stuart Warmington	Professor Myra Nimmo, Loughborough University, Leicestershire, UK	2007-2010
P.Grad.Dip./M.Sc. in Pharmaceutical Manufacturing Technology Ms Lorna Loughrey	Dr. Daryl Rees, Bedfordshire, UK	2009-2012
P.Grad.Dip. in Clinical Dentistry Dr. Frank Quinn	Professor Derrick Chisholm, University of Dundee Dental School, Dundee, Scotland	2005-2012
P.Grad.Dip. in Clinical Health Sciences Education Dr. Fintan Sheerin	Ms. Marie Glackin, Queens University, Belfast, N. Ireland	2009-2012
P.Grad.Dip. in Cognitive Psychotherapy Dr. Brian Fitzmaurice	Dr. Helen Kennerley, Warneford Hospital, Oxford, UK	2009-2012
P.Grad.Dip. in Midwifery Ms. Margaret Carroll	Dr. Jean Rankin, University of Paisley, Glasgow, UK	2006-2010
P.Grad.Dip. in Specialist Nursing Ms Honor Nicholl (<i>Haematology & Oncology</i>)	Ms. Maura Dowling, National University of Ireland, Galway	2007-2010
P.Grad.Dip. in Specialist Nursing Ms Louise McDonnell (<i>A&E, Intensive Care, Orthopaedics, Perioperative, Renal</i>)	Dr. Laserina O Connor, University College Dublin	2007-2010
P.Grad.Dip. in Specialist Nursing Ms Honor Nicholl (<i>Severe and enduring mental illness</i>)	Mr Jim Maguire, Athlone Institute of Technology, Athlone	2007-2010
P.Grad.Dip. In Specialist Nursing Honor Nicholl (<i>Dementia care for Persons with intellectual disability</i>)	Ms Orla O'Reilly, Dublin City University, Dublin	2007-2010
Higher Diploma in Children's Nursing Ms Carole King	Ms Dympna O Connell, St Angela's College, Co. Sligo	2007-2010

Appendix 7: Applications to the Research register by School for entry in 2010/2011 (inc March 2011) as of (1st April 2011) and registered research students by School.

SCHOOL	No of Applicants	No of registered students year 1	Number of research students year 1-4	Number of Masters students year 3+	Number of PhD students year 5+	Total registered EU in school	Total registered non-EU in School	Total registered research in school
Biochemistry & Immunology	18	12	65	2	1	63	3	66
Business	45	12	41	2	4	41	4	45
Chemistry	46	21	100	0	6	99	7	106
Computer Science & Statistics	48	22	132	7	29	128	33	161
Dental Science	18	8	28	1	5	26	7	33
Drama, Film & Music	23	10	42	1	6	41	7	48
Education	39	22	68	4	15	79	4	83
Engineering	67	36	198	11	13	193	19	212
English	77	19	66	1	3	58	12	70
Genetics & Microbiology	27	20	73	4	3	64	12	76
Histories & Humanities	72	32	106	0	15	103	18	121
Languages, Literatures & Cultural Studies	13	7	36	1	7	38	6	44
Law	48	22	67	3	6	69	4	73
Linguistic, Speech & Communication Sciences	35	18	36	0	5	39	2	41
Mathematics	12	7	17	0	2	18	1	19
Medicine	111	73	263	6	12	256	19	275
Natural Sciences	30	21	96	0	17	101	12	113
Nursing & Midwifery	9	7	37	0	7	43	1	44
Pharmacy & Pharmaceutical Sciences	18	7	55	1	0	50	5	55
Physics	26	21	99	3	13	92	20	112
Psychology	48	45	124	0	3	121	6	127
Religions, Theology & Ecumenics	45	20	44	0	4	34	14	48
Social Sciences & Philosophy	103	18	103	4	16	99	20	119
Social Work & Social Policy	7	3	36	1	4	36	4	40
Totals	985	483	1932	52	196	1891	240	2131

Appendix 8: Application data for Direct Admissions applications for 2010/11

SCHOOL	Course Title	No of offers made	No of male offers	No of female offers	No of EU offers	No of Non-EU offers	No of Full-Time offers	No of Part-Time offers	No. of Registered Students - Year 1 in 10/11 as of Dec 2010	EU	Non-EU
Business	Master in Business Administration (MBA)	29	21	8	18	11	29	0	27	17	10
Education	H. Dip. in Education - Primary Ed.	94	15	79	86	8	0	94	93	85	8
	Postgraduate Diploma in Education	161	52	109	149	12	161	0	128	128	0
Misc.	One year student not reading for a higher degree	3	2	1	1	2	3	0	3	1	2
	One term student not reading for a higher degree	18	5	13	2	16	0	18	16	2	14
	One Module/series of lectures	0	0	0	0	0	0	0	0	0	0
Total		305	95	210	256	49	193	112	267	233	34

*Table only shows data for accepted students

Appendix 8: Application data for taught postgraduate applications processed through PAC online application system for 2010/2011

School	Course Title	No. of Applicants	No. of EU Accepted Offers	No. of Non-EU Accepted Offers	Total Accepted Offers	% Successful applicants (no. of accepted offers to no. of applicants)	No. of Registered Students - Year 1 in 10/11	EU	Non-EU
BUSINESS	M.Sc. Finance (Part Time)	37	10	1	11	30%	11	10	1
	M.Sc. Finance (Full Time)	169	33	13	46	27%	38	27	11
	M.Sc. International Management (Full Time)	106	16	8	24	23%	22	16	6
	M.Sc. International Management (Part Time)	23	1	0	1	4%	1	1	0
CHEMISTRY	M.Sc. Chemical and Biological Techniques I	7			0	0%	0		
	M.Sc. Chemical and Biological Techniques II	1			0	0%	0		
	Postgraduate Diploma in Chemical and Biological Techniques I	4			0	0%	0		
	Postgraduate Diploma in Chemical and Biological Techniques II	1			0	0%	0		
COMPUTER SCIENCE & STATISTICS	M.Sc. Management of Information Systems	77	34	0	34	44%	33	33	0
	M.Sc. Interactive Digital Media	89	16	1	17	19%	16	15	1
	M.Sc. Computer Science (Networks & Distributed Systems)	113	9	1	10	9%	7	6	1
	M.Sc. Computer Science Mobile & Ubiquitous Computing	102	17	1	18	18%	19	18	1
	M.Sc. Technology & Learning	69	30	0	30	43%	30	30	0
	M.Sc. Computer Science (Interactive Entertainment Technology)	88	16	3	19	22%	13	11	2
	Postgraduate Diploma in Statistics	144	116	3	119	83%	35	35	0
DENTAL SCIENCE	Postgraduate Diploma Conscious Sedation Dentistry	33	8	0	8	24%	0		
	Clinical Dentistry (P.Grad.Dip)	22	19	0	19	86%	19	19	0
DRAMA, FILM & MUSIC	M. Phil. Music & Media Technologies	21				0%	22	22	0
	Postgraduate Diploma Music & Media Technologies	21	18	0	18	86%	17	17	0
	M.Phil. Film Theory and History	32	8	1	9	28%	9	8	1
	M.Phil. Theatre and Performance	35	5	7	12	34%	12	5	7
	M.Phil. Musicology and Music Theory	6				0%	0		
	M.Phil. Irish Film, Music & Theatre	14	3	1	4	29%	4	3	1
EDUCATION	M.Ed. - Aggression Studies (Full Time)	3	1	0	1	33%	1	1	0
	M.Ed. - Aggression Studies (Part Time 2 years)	10	9	0	9	90%	10	10	0
	M.Ed. - Aggression Studies (Part Time 3 years)	1			0	0%	0		

	M.Ed. - Coaching & Mentoring for Professional Development in Education (FT)	2			0	0%	0		
	M.Ed. - Coaching & Mentoring for Professional Development in Education (PT 2 yrs)	3			0	0%	0		
	M.Ed. - Coaching & Mentoring for Professional Development in Education (PT 3 yrs)	0			0	0%	0		
	M.Ed. - Co-operative Learning (Full Time)	1	1	0	1	100%	1	1	0
	M.Ed. - Co-operative Learning (Part Time 2 years)	9	4	0	4	44%	4	4	0
	M.Ed. - Co-operative Learning (Part Time 3 years)	2			0	0%	0		
	M.Ed. - Drama in Education (Full Time)	2	1	0	1	50%	1	1	0
	M.Ed. - Drama in Education (Part Time 2 years)	13	11	2	13	100%	13	11	2
	M.Ed. - Drama in Education (Part Time 3 years)	4	0	2	2	50%	1	0	1
	M.Ed. - Early Intervention (Full Time)	0			0	0%	0		
	M.Ed. - Early Intervention (Part Time 2 years)	0			0	0%	0		
	M.Ed. - Early Intervention (Part Time 3 years)	0			0	0%	0		
	M.Ed. - Foundation Studies (Full Time)	10	2	0	2	20%	2	2	0
	M.Ed. - Foundation Studies (Part Time 2 years)	22	12	1	13	59%	12	11	1
	M.Ed. - Foundation Studies (Part Time 3 years)	0			0	0%	0		
	M.Ed. - Leadership and Management in Education (Full Time)	11	0	1	1	9%	1	1	0
	M.Ed. - Leadership and Management in Education (PT 2 yrs)	43	22	0	22	51%	23	23	0
	M.Ed. - Leadership & Management in Education (PT 3 yrs)	10	7	0	7	70%	6	6	0
	M.Ed. - Positive Behaviour Management (Full Time)	2			0	0%	0		
	M.Ed. - Positive Behaviour Management (Part Time 2 years)	11	6	0	6	55%	7	7	0
	M.Ed. - Positive Behaviour Management (Part Time 3 years)	1			0	0%	0		
	M.Ed. - Science Education (Full Time)	1			0	0%	0		
	M.Ed. - Science Education (Part Time 2 years)	2	10	0	10	500%	10	10	0
	M.Ed. - Science Education (Part Time 3 years)	0			0	0%	0		
	M.Ed. - Special Educational Needs (Full Time)	10			0	0%	0		
	M.Ed. - Special Educational Needs (Part Time 2 years)	15	10	0	10	67%	10	10	0
	M.Ed. - Special Educational Needs (Part Time 3 years)	0			0	0%	0		
	M.Ed. - Teaching and Learning (Higher Education) Full Time	0			0	0%	0		
	M.Ed. - Teaching and Learning (Higher Education) Part Time 2 yrs	0			0	0%	0		
	M.Ed. - Teaching and Learning (Higher Education) Part Time 3 yrs	13	13	0	13	100%	12	12	0
	M.Sc. Biomedical Sciences (Intercalated)	9	6	0	6	67%	6	6	0
	M.Ed. - One Year Thesis (Full Time)	68	56	3	59	87%	56	54	2
ENGINEERING	M.Sc. Mechanical Engineering (ERASMUS MUNDUS)	1			0	0%	0		
	Postgraduate Diploma in Physical Planning	0			0	0%	0		
	M.Sc. Bioengineering (Full Time)	60	11	4	15	25%	15	12	3
	M.Sc. Bioengineering (Part Time)	11			0	0%	0		

	Postgraduate Diploma Highway and Geotechnical Engineering	34	14	0	14	41%	12	12	0
	M.Sc. Civil Engineering (Full Time)	88	21	3	24	27%	22	19	3
	M.Sc. Civil Engineering (Part Time)	22	1	0	1	5%	1	1	0
	Postgraduate Diploma Construction Law & Contract Administration	51	26	0	26	51%	26	26	0
	Postgraduate Diploma Fire Safety Practice	28	11	0	11	39%	12	12	0
	Postgraduate Diploma Project Management	105	61	0	61	58%	61	61	0
	Postgraduate Diploma Environmental Engineering	69	29	0	29	42%	28	28	0
	Postgraduate Diploma Health and Safety Construction	24	9	0	9	38%	8	8	0
	Postgraduate Diploma Applied Building Repair & Conservation	34	13	0	13	38%	12	12	0
ENGLISH	M.Phil. Irish Writing	46	7	10	17	37%	18	8	10
	M.Phil. Creative Writing	103	12	3	15	15%	15	12	3
	M.Phil. Popular Literature	69	15	4	19	28%	0		
	M.Phil. Literatures of the Americas	41	6	3	9	22%	5	5	0
HISTORIES & HUMANITIES	M.Phil. Medieval History	23	2	2	4	17%	2	2	0
	M.Phil. Gender & Women`s Studies (Full Time)	36	7	2	9	25%	10	8	2
	M.Phil. Gender & Women`s Studies (Part Time)	9	2	0	2	22%	2	2	0
	M.Phil. Irish Art History	25	6	3	9	36%	7	7	0
	M.Phil. Early Modern History (Full Time)	24	9	2	11	46%	11	9	2
	M.Phil. Modern Irish History	40	11	5	16	40%	0	13	5
	M.Phil. Classics	23	4	5	9	39%	8	4	4
LANGUAGES, LITERATURES & CULTURAL STUDIES	M.Phil. (Textual and Visual Studies)	22	6	3	9	41%	7	6	1
	M.Phil. Medieval Language, Literature & Culture	17	3	3	6	35%	6	3	3
	M.Phil. Early Irish	4	2	0	2	50%	2	0	2
	M.Phil. Literary Translation	24	6	1	7	29%	6	6	0
	M.Phil. Comparative Literature	31	4	1	5	16%	5	4	1
	M.Phil. German Literature with Language Pedagogy (Full Time)	2			0	0%	0		
	Postgraduate Diploma Old Irish (Full Time)	2			0	0%	0		
	M.Phil. German Literature with Language Pedagogy (Part Time)	0			0	0%	0		
	M.Phil. European Studies	31	7	3	10	32%	10	7	3
LAW	LL.M. (Master in Laws)	236	83	8	91	39%	91	82	9
LINGUISTIC, SPEECH & COMMUNICATION SCIENCES	M.Phil. (Applied Linguistics) (Full Time)	16	7	2	9	56%	9	7	2
	M.Phil. (Applied Linguistics) (Part Time)	6	1	1	2	33%	2	1	1
	M.Phil. (Speech and Language Processing) (Full Time)	12	6	1	7	58%	6	6	0
	M.Phil. (Speech and Language Processing) (Part Time)	2			0	0%	0		
	M.Phil. English Language Teaching	19	3	5	8	42%	7	3	4
	M.Sc. Clinical Speech & Language Studies	11	5	0	5	45%	5	5	0

	Postgraduate Diploma Clinical Speech and Language Studies (Dysphagia)	7	3	0	3	43%	3	3	0
	M.Phil. Linguistics (Full Time)	17	5	0	5	29%	5	5	0
	M.Phil. Linguistics (Part Time)	8	3	0	3	38%	3	3	0
MATHEMATICS	M.Sc. High Performance Computing	35	11	0	11	31%	10	10	0
	M.Sc. Sports and Exercise Medicine	22	10	0	10	45%	10	10	0
	M.Sc. Cardiology	19	1	0	1	5%	0		
	M.Sc. Exercise Physiology	18	6	0	6	33%	5	5	0
	M.Sc. Health Services Management	35	16	0	16	46%	17	17	0
	M.Sc. Paediatrics	2			0	0%	0		
	M.Sc. Molecular Pathology (Full Time)	5			0	0%	0		
	M.Sc. Molecular Pathology (Part Time)	11			0	0%	0		
	M.Sc. Occupational Therapy	10	7	0	7	70%	5	5	0
	M.Sc. Child & Adolescent Psychoanalytic Psychotherapy	0			0	0%	0		
	M.Sc. Psychoanalytic Psychotherapy	2			0	0%	0		
	M.Sc. Pharmaceutical Medicine	22	7	0	7	32%	8	8	0
	M.Sc. Cardiovascular Rehabilitation & Prevention (Part Time)	6	0	1	1	17%	1	0	1
	M.Sc. Medical Imaging	20	13	1	14	70%	15	15	0
	M.Sc. Global Health (Full Time)	49	6	13	19	39%	14	4	10
	M.Sc. Clinical Chemistry	11	9	0	9	82%	9	9	0
	M.Sc. Physical Sciences in Medicine (Full Time)	26	10	0	10	38%	8	8	0
	M.Sc. Health Informatics	61	25	0	25	41%	19	19	0
	M.Sc. Healthcare Infection Management	9			0	0%	0		
	Postgraduate Diploma Clinical Engineering (Equipment Management)	1			0	0%	0		
	M.Sc. Neuroscience	72	14	4	18	25%	13	11	2
	M.Sc. Respiratory Physiotherapy	3			0	0%	0		
	Postgraduate Diploma Pharmaceutical Medicine	10	2	0	2	20%	2	2	0
	Postgraduate Diploma Cognitive Psychotherapy	52	16	0	16	31%	15	15	0
	Postgraduate Diploma Molecular Medicine	4	1	0	1	25%	1	1	0
	Postgraduate Diploma Gynaecology & Obstetrics	1			0	0%	0		
	M.Sc. Cognitive Psychotherapy (Full Time)	1			0	0%	0		
	M.Sc. Physical Sciences in Medicine (Part Time)	6			0	0%	0		
	M.Sc. Molecular Medicine (Full Time)	68	22	1	23	34%	21	21	0
	M.Sc. Molecular Medicine (Part Time)	10	2	0	2	20%	2	2	0
	M.Sc. Cardiovascular Rehabilitation & Prevention (Full Time)	10	0	1	1	10%	0		
	M.Sc. Global Health (Part Time)	13	1	0	1	8%	2	2	0
	M.Sc. Advanced Radiotherapy Practice	0			0	0%	0		
NATURAL SCIENCES	M.Sc. Biodiversity & Conservation	60	13	3	16	27%	16	13	3

	M.Sc. Environment and Development	76	9	6	15	20%	15	9	6
	M.Sc. In Development Practice	61	15	5	20	33%	23	17	6
	M.Sc. Environmental Sciences	71	14	1	15	21%	14	14	0
NURSING & MIDWIFERY	M.Sc. Nursing (Full Time)	11	1	2	3	27%	3	1	2
	M.Sc. Nursing (Part Time)	29	11	0	11	38%	11	11	0
	M.Sc. Midwifery (Full Time)	2			0	0%	0		
	M.Sc. Midwifery (Part Time)	5			0	0%	1	1	0
	M.Sc. Gerontological Nursing (Part Time)	30	24	0	24	80%	27	27	0
	M.Sc. Mental Health (Part Time)	24	16	0	16	67%	18	18	0
	M.Sc. Mental Health (Full Time)	14	3	0	3	21%	3	3	0
	M.Sc. Palliative Care	17	13	0	13	76%	13	13	0
	M.Sc. In Dementia (Full Time)	3			0	0%	0		
	M.Sc. In Dementia (Part Time)	13	9	0	9	69%	9	9	0
	Postgraduate Diploma Clinical Health Sciences Education	12	5	0	5	42%	4	4	0
	M.Sc. Cancer Care	19	12	1	13	68%	11	11	0
	Postgraduate Diploma Oncological Nursing (Full Time)				0	0%	0		
	Postgraduate Diploma Specialist Nursing	69	43	1	44	64%	44	44	0
	Higher Diploma Children`s Nursing	82	15	0	15	18%	15	15	0
Higher Diploma Midwifery	68	46	2	48	71%	45	43	2	
PHARMACY & PHARMACEUTICAL SCIENCES	M.Sc. Pharmaceutical Manufacturing Technology	23	10	1	11	48%	21	20	1
	M.Sc. Pharmaceutical Analysis (Full Time)	43	12	1	13	30%	11	10	1
	M.Sc. Pharmaceutical Analysis (Part Time)	5	1	0	1	20%	1	1	0
	M.Sc. Hospital Pharmacy	29	11	0	11	38%	0		
	M.Sc. Community Pharmacy	5				0%	1	1	
	M.Sc. Pharmaceutical Technology (Full Time)	42	3	1	4	10%	3	2	1
	Postgraduate Diploma Pharmaceutical Manufacturing Technology	14	6	0	6	43%	14	14	0
Postgraduate Diploma Community Pharmacy	11	7	0	7	64%	7	7	0	
PSYCHOLOGY	M.Sc. Applied Psychology (FT)	111	34	0	34	31%	32	32	0
	M.Sc. Applied Psychology (PT)				0	0%	0		
	Postgraduate Diploma Clinical Supervision (Psychology)				0	0%	0		
	Postgraduate Diploma Applied Behaviour Analysis	62	16	0	16	26%	15	15	0
	M.Sc. Applied Behaviour Analysis	7	5	0	5	71%	4	0	4
	Higher Diploma Psychology	63	22	0	22	35%	22	22	0
	M.Sc. Clinical Supervision	16	4	0	4	25%	2	2	0
M.Sc. Psychology (Applied Behaviour Analysis)	28	8	0	8	29%	9	9	0	
RELIGIONS, THEOLOGY AND ECUMENICS	M.Phil. International Peace Studies (Full Time)	88	21	11	32	36%	26	19	7
	M.Phil. International Peace Studies (Part Time)	8	1	1	2	25%	0		
	M.Phil. Conflict Resolution & Reconciliation Studies (Full Time)	55	7	10	17	31%	15	7	8

	M.Phil. Conflict Resolution & Reconciliation Studies (Part Time - 2 years)	6	2	0	2	33%	1	1	0
	M.Phil. Conflict Resolution & Reconciliation Studies (Part Time - 3 years)	0			0	0%	0		
	Bachelor in Divinity	0			0	0%	0		
	Postgraduate Diploma Conflict & Dispute Resolution Studies	40	12	0	12	30%	13	13	0
	M.Phil. Intercultural Theology and Interreligious Studies (Full Time)	16	1	4	5	31%	5	1	4
	M.Phil. Intercultural Theology and Interreligious Studies (Part Time)	3	2	0	2	67%	2	2	0
	Masters in Theological Studies (Part Time) MODE A	7	6	0	6	86%	6	6	0
	Masters in Theological Studies (Part-Time) MODE B	4	4	0	4	100%	5	5	0
SOCIAL SCIENCES AND PHILOSOPHY	M.Sc. Economic Policy Studies	33	14	1	15	45%	15	15	0
	M.Sc. International Politics (Full Time)	7	15	7	22	314%	19	13	6
	M.Sc. International Politics (Part Time)	4	1	1	2	50%	2	1	1
	M.Sc. Economics (Full Time)	88	12	1	13	15%	15	14	1
	M.Sc. Economics (Part Time)	19	4	0	4	21%	3	3	0
	PG Diploma European Employment Studies (Full Time)	2	4	0	4	200%	4	4	0
	PG Diploma European Employment Studies (Part Time)	0			0	0%	0		
	M.Sc. European Employment Studies (Full Time)	11	4	0	4	36%	4	4	0
	M.Sc. European Employment Studies (Part Time)	2			0	0%	0		
	M. Phil Race, Ethnicity, Conflict	49	10	6	16	33%	16	10	6
	M.Sc. Comparative European Politics (Full Time)	63	7	6	13	21%	11	5	6
	M.Sc. Comparative European Politics (Part Time)	3			0	0%	0		
	M.Phil. Psychoanalytic Studies	27	7	0	7	26%	9	9	0
SOCIAL WORK & POLICY	Postgraduate Diploma Child Protection & Welfare	15	15	0	15	100%	13	13	0
	M.Sc. Applied Social Research	35	11	1	12	34%	11	10	1
	M.Sc. In Disability Studies (Full Time)	10	7	0	7	70%	7	7	0
	M.Sc. In Disability Studies (Part Time)	12	4	0	4	33%	4	4	0
	M.Sc. Drug and Alcohol Policy	12	9	0	9	75%	9	0	9
	M.Sc. Child Protection & Welfare	17			0	0%	7	7	0
	Master in Social Work	156	22	2	24	15%	23	22	1
	Postgraduate Diploma Child Protection and Welfare	28	15	0	15	54%	14	14	0
TOTAL		5484	1735	219	1954	36%	1794	1609	185