

University of Dublin



Trinity College

**Dean of Graduate Studies' Annual Report
2008/09
for
University Council on 21st April, 2010**

*including
Postgraduate Admissions Data for 2009/10*

**Professor Carol Ann O'Sullivan
Dean of Graduate Studies**

Contents

	Page
1. Introduction	3
2. Graduate Studies Office	3
3. Graduate Studies Committee	5
4. New Course Proposals	6
5. Processing and Admissions: Postgraduate Student and Course Numbers	7
6. Taught Postgraduate Courses – Overview of Student Numbers	13
7. Maintenance of Academic Quality	14
8. College Awards	16
9. Travel Grants	17
10. Publications	17
11. Other Reporting Items	18
12. Postgraduate Admissions Data 2009/10	19

List of Tables, Figures and Appendices

Tables

		Page
Table 1	Postgraduate new entrants and total registered graduate students from 2002/03	7
Table 2	Postgraduate student numbers from 1994/95 by category	8
Table 3	Breakdown of students by gender on Research, Masters and Postgraduate Diploma courses registered from 2004/05	10
Table 4	Breakdown of research students by gender and Faculty Grouping in 2005/06, 2006/07, 2007/08 & 2008/09	11
Table 5	Breakdown of Taught Masters students by gender and Faculty Grouping in 2005/06, 2006/07, 2007/08 & 2008/09	11
Table 6	Breakdown of Postgraduate Diploma students by gender and Faculty Grouping in 2005/06, 2006/07, 2007/08 & 2008/09	11
Table 7	Overview of Student Numbers on Postgraduate Taught Courses	13
Table 8	Applications for College research awards from 2006/07 to 2008/09	16
Table 9	Travel grant applications and reimbursements in 2008/09	17

Figures

Figure 1	Annual increases of full-time and part-time students from 1993/94	9
Figure 2	Number of Taught Masters and Postgraduate Diploma courses from 1994/95	12
Figure 3	Examination period (in terms of months) of research theses inclusive of 24 theses referred for major revision	15

Appendices

Appendix 1	Taught Postgraduate Courses – Student Numbers 2005/06 to 2009/10	21
Appendix 2	Results of approved Research and Professional Degree Examinations (by degree) for the past three years	28
Appendix 3	Number of research degrees awarded by Faculty Grouping and degree in 2008/09	29
Appendix 4	Nationality of students in 2007/08 and 2008/09	30
Appendix 5	List of external examiners for research degrees by Faculty in 2008/09	33
Appendix 6	List of Taught Course External Examiners by Faculty in 2008/09	43
Appendix 7	Applications to the research register for entry in 2009/10	48
Appendix 8	Applications to the postgraduate taught courses by School for entry in 2009/10	49

1. Introduction

The purpose of this annual report to the University Council is threefold:

- (i) to provide the University Council, and the wider College community, with the statistical information needed to make informed policy decisions about graduate education in the College,
- (ii) to report on the work of the Graduate Studies Office, and
- (iii) to make the required statutory reports to University Council regarding examiners appointed for higher degrees.

Statistical data cover the period 2008/09, and postgraduate admissions data cover the period from September 2009 to the 4th March 2010.

Once approved by Council, this report will be posted on the Graduate Studies Office Website at http://www.tcd.ie/Graduate_Studies/

2. Graduate Studies Office

The Dean of Graduate Studies is head of the Graduate Studies Office (GSO). The Dean is supported by three Administrative Officers, one Senior Executive Officer and four Executive Officers.

The Dean of Graduate Studies has statutory responsibility for admitting all postgraduate students and administering the regulations regarding their academic progression and examination. The Graduate Studies Office (GSO) acts as the central coordinating office for postgraduate education in College.

Responsibilities of the Dean of Graduate Studies supported by the Graduate Studies Office include:

Development of Graduate Education Policy

This is achieved by

- (a) Convening the Graduate Studies Committee consisting of all the Directors of Teaching and Learning (Postgraduate) in the Schools, Keeper of Readers' Services, the MIS Manager, President and Vice President of the Graduate Students' Union, and bringing before it matters of importance relating to graduate education including changes to the regulations concerning higher degrees (see *University Calendar Part 2* page 10 for the Terms of Reference of the Graduate Studies Committee);
- (b) Attending national and international *fora* (e.g. Irish Universities Association, European Universities Association, Coimbra Group Taskforce meetings) and using this information to develop discussion papers on matters of importance for developments in graduate education;
- (c) Representing the graduate education function on College committees and compiling and interpreting information regarding graduate education for such committees;
- (d) Updating and revising procedures of admission, progression and examination, and making the required changes to the *University Calendar Part 2*;

Administration of postgraduate courses

There are some 174 separate courses of study at postgraduate level in the College. These are administered by the GSO and Schools. Administrative tasks include

- (a) Providing specialist advice and assistance to Schools in the development of new postgraduate courses. Specifically, the GSO staff ensure that proposed admissions criteria adhere to the College regulations, that the ECTS values apportioned to modules are correct, that proposed entries comply with the *University Calendar Part 2* regulations and the *Prospectus*, and that the documentation prepared for the Graduate Studies Committee and the University Council is complete;
- (b) Liaising with the College community to produce the annual *Postgraduate Prospectus*;
- (c) Dealing with initial enquiries about postgraduate programmes both in the areas of research and taught (Masters and Postgraduate Diploma) courses;
- (d) Monitoring the quality of taught postgraduate courses by reviewing and distributing course examiners' reports and ensuring that recommendations are acted on;
- (e) Assisting the Quality Office with reviewing taught postgraduate programmes as part of the School review process, and also initiating occasional course reviews outside the normal process when required;
- (f) Promoting the College's postgraduate programmes through advertisement and attendance at national and international career exhibitions and fairs.

Provision of services for graduate students

- (a) Setting and monitoring the quality of graduate admissions to the College. All students are admitted to the University by the Dean of Graduate Studies *via* one of two postgraduate admission routes:
 - i. On-line admissions facility *via* the Postgraduate Applications Centre (PAC)
 - ii. Direct admissions: the GSO receives and processes applications for admission liaising with Directors of Teaching and Learning (Postgraduate) in the Schools for research students and the Course Directors for admission to taught programmes.
- (b) Setting regulations for students' academic progress and monitoring these regulations, e.g. transfer from the Masters to Ph.D. register, confirmation on the Ph.D. register, time on the research register;
- (c) Attending to postgraduate student 'cases' in correspondence with the student, the Course Director, the supervisor, or the Director of Teaching and Learning (Postgraduate) (DTLP);
- (d) Processing research thesis submissions and appointment of external examiners for taught courses and research degrees;
- (e) Receiving and reviewing examination results, distributing examiners reports, and convening of appeals by Academic Appeals Committee for Graduate Students (which is a sub-committee of the Graduate Studies Committee);
- (f) Preparing documentation for the Sub-committee of Board and Council for the approval of higher degrees.

3. Graduate Studies Committee

The Graduate Studies Committee (GSC) normally meets monthly during statutory term. The composition of the Graduate Studies Committee is listed in the *University Calendar Part 2*.

In 2008/09 there were seven meetings of the GSC. Minutes of the GSC are available *via* the Trinity College Local Home Page¹.

During 2008/09 the Committee discussed the following issues of interest to the general postgraduate community in College:

- **Postgraduate Fees (23/10/08/210.4)**
The Committee discussed a document on Postgraduate fees aimed at rationalizing and simplifying the fees structure to simplify analysis, modification and future planning of fees and to ensure an academic perspective to the process.
- **The Draft Paper on Trinity College Ph.D. (23/01/09/015)**
The Committee was asked to provide feedback on a paper prepared by the Dean, the goal of which was to help define the Trinity Ph.D. Issues addressed in the paper included: the needs of students with disabilities; the division between Ph.D. and other types of doctorates; contribution to the development of Ireland's economy and the relative opportunities and challenges involved; modes of thesis delivery and assessment; part-time Ph.D.'s and lifelong learning issues; inter-institutional programmes and skills training and career options for Ph.D. graduates. Feedback from the committee was incorporated into the document that the Dean submitted to Council.
- **IUQB Good Practice in the Organisation of Ph.D. Programmes in Irish Higher Education Consultation Draft (14/05/09/040)**
The Committee discussed this document and while they supported many of the excellent examples of good practice, they agreed that some of the language used was too prescriptive and resembled regulations rather than guidelines which could conflict with our own regulations. This was reported back to the IUQB noting that the non-prescriptive nature of the document must be fully clarified in the introduction before it could be accepted.
- **Innovation Academy (14/05/09/041)**
The Dean consulted with the Committee to further define the Innovation Academy with agreement that, in the first instance, the goal of the Innovation Academy is to deliver innovation and entrepreneurship training and education to Ph.D. students, and to coordinate the provision of generic, transferable and advanced disciplinary courses across the two institutions and beyond.
- **Appeals Process (14/05/09/043 (11/06/09/052)**
The Committee discussed and approved changes to the Appeals Process to be reflected in the College Calendar Part 2. The new processes clearly define several levels of appeal with increasing formality.

¹ http://www.tcd.ie/Graduate_Studies/staff/committee/committeepapers/index.php

- **PhD Module Descriptors (11/06/09/049)**
Following approval of a template for Module Descriptors of courses offered to PhD students, several such descriptors were provided and approved. The approval of this set of pilot modules was the first step in a process of formalizing the quality review processes for such provisions as the move to a more modular structure for graduate education provision in general. Descriptors for both PhD Generic Skills Modules and Advanced Disciplinary Modules were approved.
- **DRHEA Collaborative Agreement (11/06/09/050)**
The Committee reviewed and approved this document which has been developed to create an inter-institutional agreement related to the development and delivery of advanced disciplinary modules. The Dean confirmed that this document would now be signed by all university representatives.
- **Flexi Masters (11/06/09/051)**
The Committee discussed the option of Flexi-Masters and approved a proposal being brought to Council which would seek permission to authorize flexible provision of postgraduate qualifications involving modules already on offer within each School on a pilot basis from October 2009.

4. New Course Proposals

In 2008/09 the Graduate Studies Committee discussed and recommended the following nine new course proposals, seven of which were subsequently approved by the University Council to commence in September 2009 (unless indicated otherwise):

- M.Sc. in International Management
- M.Sc. in Sociology*
- M.Phil. in European Studies
- M.Sc. in Advanced Radiotherapy Practice
- M.Sc. in Cancer Care
- M.Sc. in Cognitive Psychotherapy*
- M.Sc. in Environment and Development
- Postgraduate Diploma in Computing with Advanced Interdisciplinary Outlook
- Postgraduate Diploma in Computing (Conversion) with Interdisciplinary Outlook

* Not approved

5. Processing and Admissions: Postgraduate Student and Course Numbers

As the first point of contact for all postgraduate students, the GSO advises all incoming students with regard to registration, financial information on fee payment, and immigration requirements (for non-EU applicants). The GSO organises the Orientation Meeting for new postgraduate students where they are advised on services available to them in College.

There have been approximately 20,000 enquiries per year over the past three years, either directly to the office over the phone or by email. In 2008/09, the Graduate Studies Office processed 4,243 applications for postgraduate admission, and approximately 1400 applications were submitted directly to Schools. There has been a consistent increase in the number of postgraduate students registered over the last six years (Table 1).

In 2006/07 31% of all students were graduate students compared to 32.5% in 2007/08, and 32.1% in 2008/09. Almost one in three students in Trinity is now a postgraduate student.

	2002/03	2003/04	2004/05	2005/06	2006/07	2007/08	2008/09
All new entrants to postgraduate register	2,432	2,269	2,363	2,411	2,572	2,729	2,858
New entrants – first time in TCD	2,103	1,964	1,982	2,026	2,117	2,270	2,358
Total number registered for that year	4,193	4,207	4,298	4,531	4,803	5,036	5,206
Increase on previous year in terms of registered students	374	14	91	233	272	233	170
% increase on previous year	9.7%	0.33%	2.2%	5.4%	6.0%	4.9%	3.4%

Table 1. Postgraduate new entrants and total registered graduate students from 2002/03

The breakdown of postgraduate student numbers in the three major classes of research, taught and postgraduate diplomas is presented in Table 2.

Year	Research			Taught Masters			PG Diploma			Total PGs		
	f/t	p/t	total	f/t	p/t	total	f/t	p/t	total	f/t	p/t	total
1994/95	1043	132	1175	398	155	553	159	276	435	1600	563	2163
1995/96	1056	127	1183	393	195	588	139	330	469	1588	652	2240
1996/97	1069	137	1206	361	242	603	159	393	552	1589	772	2361
1997/98	1060	185	1245	483	340	823	145	419	564	1688	944	2632
1998/99	1130	178	1308	474	379	853	234	776	1010	1838	1333	3171
1999/00	1221	196	1417	474	420	894	170	1186	1356	1865	1802	3667
2000/01	1161	186	1347	467	443	910	247	1085	1332	1875	1714	3589
2001/02	1226	207	1433	509	499	1008	235	1143	1378	1970	1849	3819
2002/03	1306	184	1490	579	572	1151	517	1035	1552	2402	1791	4193
2003/04	1391	139	1530	607	704	1311	564	802	1366	2562	1645	4207
2004/05	1491	220	1711	673	706	1379	513	695	1208	2677	1621	4298
2005/06	1533	248	1781	734	710	1444	437	869	1306	2704	1827	4531
2006/07	1600	275	1875	740	707	1447	484	997	1481	2824	1979	4803
2007/08	1662	284	1946	740	807	1547	477	1066	1543	2879	2157	5036
2008/09	1783	306	2089	783	890	1673	453	991	1444	3019	2187	5206

Table 2. Postgraduate student numbers from 1994/1995 by category

The following conclusions can be drawn from Table 2:

- The number of postgraduate research students in both categories (full-time and part-time) has increased by 143 registered students in comparison to 2007/08.
- Research students constitute 40.1% of all postgraduate students in 2008/09 compared to 38.6% in 2007/08 and 39% in 2006/07.
- Research students make up 12.9% of the total student body of 16,215 which is a slight increase on 12.4% in 2007/08 and 12.1% in 2006/07.
- Of the 3,117 students registered for taught courses in 2008/09, 1,673 (32.1% of all graduate students) were undertaking a Masters degree and 1,444 (27.7%) were registered for a Postgraduate Diploma compared to 1,547 (30.7%) on a Masters degree and 1,543 (30.6%) on a Postgraduate Diploma in 2007/08, and 1,447 (30.1%) and 1,481 (30.8%) respectively in 2006/07.
- Part-time student numbers increased further in 2008/09 to 2,187 with 42% of all postgraduate students registering for part-time study in comparison to 42.8% in 2007/08 and 41.2% in 2006/07. As in the previous two years, the majority of part-time students were undertaking Taught Masters and Postgraduate Diploma courses while the number of part-time research students was relatively low by comparison at 306. This number, however, has increased from 284 and 275 registered students in 2007/08 and 2006/07 respectively.

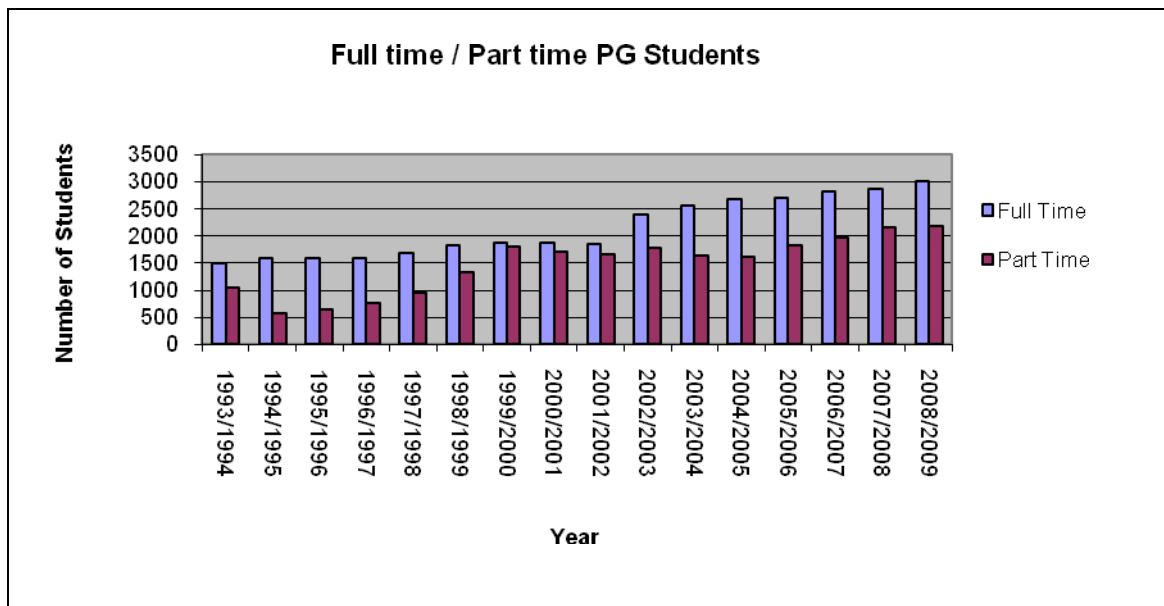


Figure 1. Annual increases of full-time and part-time students from 1993/94

Figure 1 illustrates that from the year 1999/00, when it increased significantly to 1,802, the overall annual number of registered part-time students fluctuated only slightly and remained within the same range.

Appendix 4 provides comparative data for students' nationality for 2008/09 and 2007/08.

Of all the 5,206 students registered in 2008/09

- Eighty seven (1.7%) came from Africa compared to eighty one (1.6%) out of 5,036 in 2007/08 resulting in an annual increase of six students,
- two hundred and eighteen (4.2%) came from Asia compared to two hundred and twenty five (4.5%) in 2007/08 resulting in an annual decrease of seven students,
- eleven (0.2%) came from Australia and New Zealand compared to fifteen (0.3%) in 2007/08 i.e. an annual decrease of five students,
- two hundred and twenty eight (4.4%) came from North and Central America compared to two hundred and thirty three (4.6%) in 2007/08 i.e. an annual decrease of five students
- six hundred and forty two (12.3%) came from the EU countries compared to five hundred and twelve (10.2%) in 2007/08 with an increase of 130 students and overall increase of 2.3%,
- Forty eight (0.9%) came from the non EU countries in Europe compared to forty (0.79%) in 2007/08 with an increase of eight students (0.15%).
- There are twelve countries from which at least 20 students came to study in Trinity in 2008/09 (fifteen in 2007/08) i.e. Great Britain (207, 165 in 2007/08), the United States of America (180, 177 in 2007/08), Germany (79, 53 in 2007/08), Italy (62, 74 in 2007/08), Poland (71, 57 in 2007/08), China (63, 60 in 2007/08), India (62, 58 in 2007/08), Canada (38, 40 in 2007/08), Spain (37, 39 in 2007/08), France (42, 36 in 2007/08), Russian Federation (24, 15 in 2007/08) and Nigeria (23, 20 in 2007/08). These 888 (794 students in 2007/08) represent 17.1% of total postgraduate students.

Table 3 below shows the breakdown of students by gender registered on Research, Masters and Postgraduate Diploma programmes in 2008/09 indicating that while the overall number of male students had been decreasing each year in proportion to the overall number of registered students, there was a slight increase in the number male students in 2008/09. The overall male/female ratio in 2008/09 is 2:3.

	Male					Female					Total				
	08/09	07/08	06/07	05/06	04/05	08/09	07/08	06/07	05/06	04/05	08/09	07/08	06/07	05/06	04/05
Research	1028	932	907	900	876	1061	1014	968	881	835	2089	1946	1875	1781	1711
Taught Master	698	610	577	627	569	975	937	870	817	810	1673	1547	1447	1444	1379
Postgraduate Diplomas	473	504	438	393	456	971	1039	1043	913	752	1444	1543	1481	1306	1208
Total	2199	2046	1922	1920	1901	3007	2990	2881	2611	2397	5206	5036	4803	4531	4298
Total Percentage	42.2%	40.6%	40%	42.4%	44.2%	57.8%	59.3%	60%	57.6%	55.8%	100%	100%	100%	100%	100%

Table 3. Breakdown of students by gender on Research, Masters and Postgraduate Diploma courses registered from 2004/05

Tables 4-6 (below) illustrate a breakdown of student numbers between three Faculty Groupings, and the data illustrates that

- The number of female research students has increased by 47 (over 4%) in comparison to the previous year whereas the number of males by 96 students (9%),
- the highest percentage of male research students i.e. 52.7% (542 out of all registered research males in 2008/09), compared to 53.2% (496 students in 2007/08) are registered in Engineering, Mathematics and Science,
- the highest percentage of female research students i.e. 44.5% (472 out of all registered research females in 2008/09), compared to 46.3% (470 students in 2007/08), are registered in Arts, Humanities and Social Sciences,
- overall, fewer males than females register on taught courses; however, there has been an increase of 88 male students from 610 in 2007/08 to 698 registered on the Masters degree courses, which can be compared to the corresponding increase by 38 females from 937 to 975 with the majority of that increase (30 students) registered in Arts, Humanities and Social Sciences,
- With respect to Postgraduate Diploma students, the overall number of males has been reasonably stable over the last two years with a slight increase of 5 from 468 to 473. A significant difference here however lies in the fact that almost twice as many females (971) registered on a postgraduate diploma course than males (473) in 2008/09. The number of females has decreased by 104 students i.e. 10.7% from 2007/08.

FACULTY GROUPING	Research: Males								Research: Females							
	2005/06		2006/07		2007/08		2008/09		2005/06		2006/07		2007/08		2008/09	
	ft	pt	ft	pt	ft	pt	ft	pt	ft	pt	ft	pt	ft	pt	ft	pt
ARTS, HUMANITIES & SOCIAL SCIENCES	247	49	252	55	247	58	270	64	348	51	371	70	398	72	405	67
ENGINEERING, MATHEMATICS & SCIENCE	468	38	457	35	460	36	502	40	273	12	288	17	291	12	304	12
HEALTH SCIENCES	63	35	74	34	93	38	107	45	134	63	158	64	173	68	195	78
<i>sub-totals</i>	778	122	783	124	800	132	879	149	755	126	817	151	862	152	904	157
<i>Totals</i>	900		907		932		1028		881		968		1014		1061	

0506 Research: M/F 900/881 [1:0.98]

0607 Research: M/F 907/968 [1:1.06]

0708 Research: M/F 932/1014 [1:1.08]

0809 Research: M/F 1028/1061 [1:1.03]

Table 4. Breakdown of Research students by gender and Faculty Grouping in 2005/06, 2006/07, 2007/08 and 2008/09

FACULTY GROUPING	Taught Masters: Males								Taught Masters: Females							
	2005/06		2006/07		2007/08		2008/09		2005/06		2006/07		2007/08		2008/09	
	ft	pt	ft	pt	ft	pt	ft	pt	ft	pt	ft	pt	ft	pt	ft	pt
ARTS, HUMANITIES & SOCIAL SCIENCES	176	139	179	121	163	130	185	151	335	130	349	158	341	206	372	205
ENGINEERING, MATHEMATICS & SCIENCE	104	101	88	100	113	103	104	142	36	56	44	62	44	59	43	66
HEALTH SCIENCES	46	61	33	56	29	72	36	80	37	223	47	210	50	237	43	246
<i>sub-totals</i>	326	301	300	277	305	305	325	373	408	409	440	430	435	502	458	517
<i>Totals</i>	627		577		610		698		817		870		937		975	

0506 Taught Masters: M/F 627/817 [1:1.3]

0607 Taught Masters: M/F 577/870 [1:1.5]

0708 Taught Masters: M/F 610/937 [1:1.5]

0809 Taught Masters: M/F 698/975 [1:1.4]

Table 5. Breakdown of Taught Masters students by gender and Faculty Grouping in 2005/06, 2006/07, 2007/08 and 2008/09

FACULTY GROUPING	Diploma: Males								Diploma: Females							
	2005/06		2006/07		2007/08		2008/09		2005/06		2006/07		2007/08		2008/09	
	ft	pt	ft	pt	ft	pt	Ft	pt	ft	pt	ft	pt	ft	pt	ft	pt
ARTS, HUMANITIES & SOCIAL SCIENCES	59	103	66	150	73	159	89	146	166	387	196	504	227	513	249	489
ENGINEERING, MATHEMATICS & SCIENCE	14	150	18	154	18	163	12	182	5	67	7	66	11	68	4	67
HEALTH SCIENCES	15	52	13	37	15	40	4	40	178	110	184	86	170	86	95	67
<i>sub-totals</i>	88	305	97	341	106	362	105	368	349	564	387	656	408	667	348	623
<i>Totals</i>	393		438		468		473		913		1043		1075		971	

0506 Diplomas: M/F 393/913 [1:2.3]

0607 Diplomas: M/F 438/1043 [1:2.4]

0708 Diplomas: M/F 468/1075 [1:2.3]

0809 Diplomas: M/F 473/971 [1:2.1]

Table 6. Breakdown of Postgraduate Diploma students by gender and Faculty Grouping in 2005/06, 2006/07, 2007/08 and 2008/09

- *Postgraduate Taught Courses*

The number of postgraduate taught courses continues to rise steadily (Fig. 2 shows this graphically). There were 174 separate courses of study in 2008/09, which is an overall increase of seven new courses from 167 in 2007/08, and an increase of 16 on the 2006/07 offering. The number of taught programmes has increased by 55% over the past ten years. Occasionally, entry to some courses may be suspended for a given year for academic or resource-related reasons. Additionally, some courses only intake on a bi-annual basis.

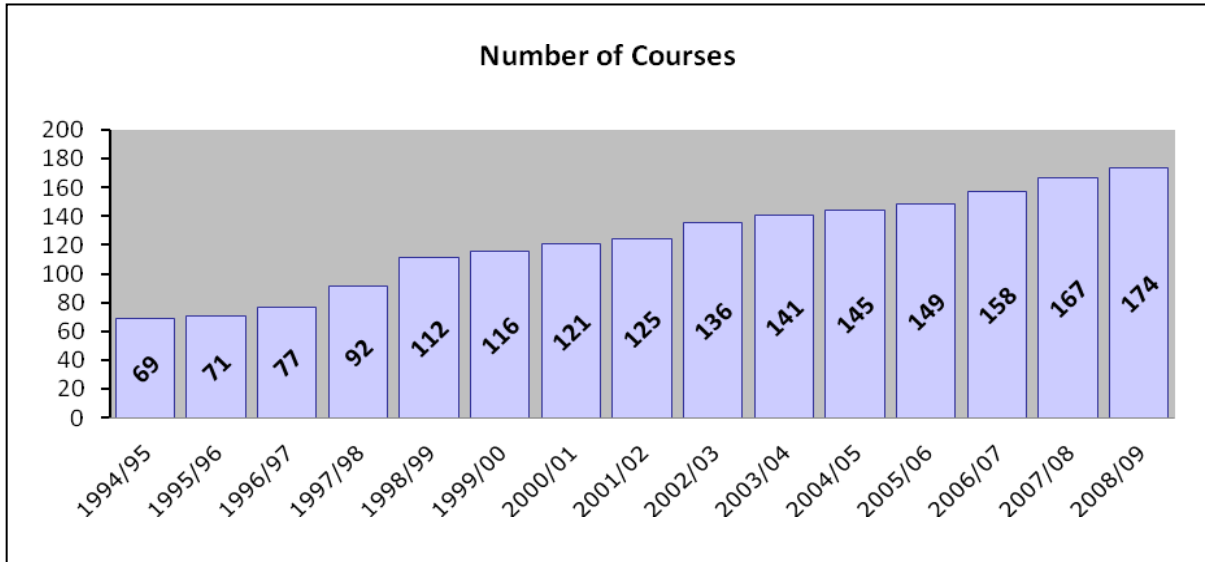


Figure 2. Number of Taught Masters and Postgraduate Diploma courses from 1994/95

6. Taught Postgraduate Courses – Overview of Student Numbers

An overview of student numbers on taught postgraduate courses (M.Phil. / M.Sc. / PG Dip.) in 2008/09 shows that a number of courses in all three Faculties are operating below optimal capacity, with fewer than 10 students. Several courses in each Faculty did not run in 08/09 due to low student numbers.

- 43 courses across the three Faculties ran with fewer than 10 students, constituting 31% of the total number offered
- 16 courses did not run due to insufficient numbers (11.5%)
- 18 of 44 Health Science courses had fewer than 10 students. When combined with courses that did not run due to low student numbers, 50% of taught postgraduate courses in this Faculty raise some cause for concern
- 5 courses in Engineering, Maths and Science had fewer than 10 students (16%). 4 courses (13%) have not had an intake for several years, raising the combined total of courses that require attention to 29%
- The Faculty of Arts, Humanities and Social Sciences had the highest number of courses with fewer than 10 students, comprising 31% of 64 courses on offer. AHSS also had the highest number of courses that did not run in 2008/09, at 8 (12.5%)

Faculty	Taught Courses (M.Phil./M.Sc. /PG Dip.)	<10 students	Did Not Run	Combined: requiring attention
Arts, Humanities & Social Sciences	64	20	8	28
%		31%	12.5%	44%
Engineering, Maths & Science	31	5	4	9
%		16%	13%	29%
Health Sciences	44	18	4	22
%		41%	9%	50%
Totals	139	31%	11.5%	42%

Table 7: Overview of Student Numbers on Postgraduate Taught Courses

7. Maintenance of Academic Quality

Academic quality of graduate education is monitored by external examiners who play different functions depending on their role, either to assess taught courses or to examine research theses of individual students.

- *Taught Courses – External Examiners*

Most external examiners are appointed for a three-year period; although for some part-time courses examiners are appointed for four years. All external examiners for taught courses must complete a standard course assessment form for the first two years of their tenure and, in their final year, are required to complete a more extensive report. Appendix 6 contains a list of External Examiners for taught courses for noting and approval by Council. By 4th March 2010, 87 annual reports for 2008/09 have been received. Of these, 36 were for M.Sc. courses, 28 for M.Phil. courses, one for M.S.W., one for MBA, one for Doctorate in Dental Surgery (D.Ch.Dent), three for LL.M., one for M.St., two for M.Ed., three for professional taught doctoral programme (D.Clin.Psych.), and eleven for Postgraduate Diplomas.

In addition, the academic integrity and overall quality of all new postgraduate Masters course proposals are reviewed by external academic assessors, internationally recognised experts in their discipline, before submissions are made to the University Council for approval.

- *Research Degrees*

The role of external examiners is different with respect to research degrees as the examiners are appointed by the Dean of Graduate Studies to individual students to provide an independent academic assessment of every submitted research thesis.

In the academic year 2008/09, there were 343 external examiners involved in the examination of 362 research theses with the latter number being an increase of 1 from 361 in the previous year. The list of the research examiners, as already approved by the Sub-committee of Board and Council for Higher Degrees, is collated in Appendix 5 for noting.

The results of the examinations of research theses that took place from October 2008 to September 2009 are given in Appendix 2 with data for the previous three years for comparison. The data show that the number of Ph.D. examinations in 2008/09 was 275 including one submission recommended for a lower degree of an M.Litt. (compared to 261 examinations in 2007/08 including two submissions recommended for a lower degree of an M.Litt. / M.Sc., and 237 in 2006/07 including one submission recommended for a lower degree of an M.Litt.). The number of Ph.D. awards has been increasing steadily, and has grown by 14 (5.4%) in the last year.

The decision on the majority of Ph.D., M.Sc. and M.Litt. theses continues to be "minor corrections" (as shown in Appendix 2). Major revisions are requested intermittently, and the number of such outcomes has increased slightly, with 24 out of the relevant sub-total of 362 referred in 2008/2009 (6.6%) compared with 20 out of 344 in 2007/08 (5.8%). Major revisions are now considered to be a more reasonable outcome by all concerned, and almost always result in a greatly improved thesis.

Figure 3 shows the time taken from first submission of the thesis to approval by the Sub-committee of Board and Council for Higher Degrees. This period includes the time taken to

- (i) nominate examiners
- (ii) appoint examiners and send the theses to them
- (iii) arrange a *viva* (if required)
- (iv) receive the examiners reports
- (v) make a decision and inform the student
- (vi) complete revisions
- (vii) bring recommendations to the Sub-committee for Higher Degrees (a Sub-committee of Board and Council).

Figure 3 below illustrates that for most students (55) the thesis examination period was five months in 2008/09 (correspondingly, it took seven months for 74 students in 2007/08, and six months for the largest cohort of 63 students in 2006/07). In 2008/09 out of 362 research examinations 50 (13.8%) involved examination periods of more than twelve months. This compares with 49 (13.5%) out of 361 research examinations in 2007/08 and with 38 (11.5%) out of 330 in 2006/07. The increased number of examinations has led to a concomitant increase in the length of the examination period, which is cause for concern and must continue to be addressed.

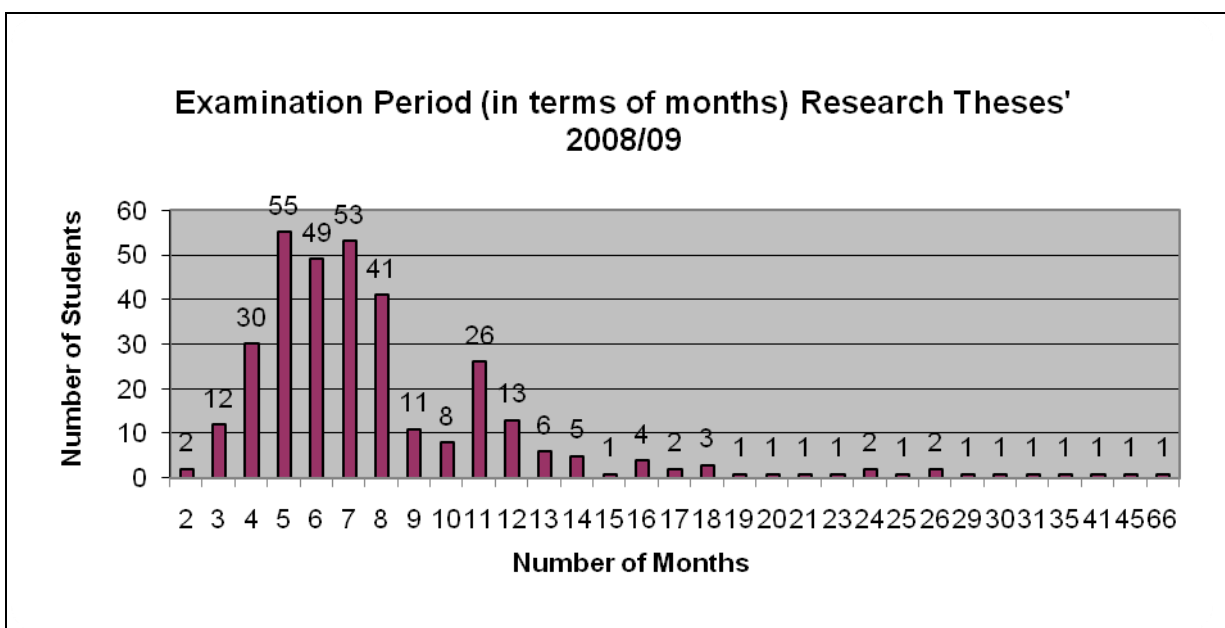


Figure 3. Examination period (in terms of months) of research theses inclusive of 24 theses referred for major revision

Appendix 3 allows for comparison of the number of research degrees awarded by Faculty Grouping and degree. Compared to the previous year, the number of awards by degree varies within class (e.g. MSc, Ph.D.) but also within a Faculty Grouping within a class.

- *Higher Doctorates*

There were four enquiries about Higher Doctorates in 2008/09. Two applications were submitted for Sc.D., and one for Litt.D. One Sc.D. applicant was accepted to the register.

8. College Awards

The Graduate Studies Office is responsible for administering a number of separate College research award schemes. In 2008/09 there were three major categories of research awards available to full-time students. Table 8 below includes the number of applications for these awards from 2006/07 to 2008/09.

	Ussher Awards (code 1244)			Postgraduate Studentships (code 1252)			One-Year Postgraduate Research Awards for Continuing Students (code 7017)		
	08/09	07/08	06/07	08/09	07/08	06/07	08/09	07/08	06/07
No. of Applicants	205	185	270	262	203	264	97	96	93
No. of Allocations	6	6	6	65	65	65	30	30	30

Table 8. Applications for College research awards from 2006/07 to 2008/09

- *Ussher Fellowships (Award code 1244)*

These awards are allocated to exceptionally well-qualified candidates of outstanding promise. They are open to competition by graduates of any nationality, for research in any branch of learning in the College (subject to availability of resources and competent supervision in the chosen area). The awards are for a three-year period of research leading to a Ph.D. They cover fees and provide a maintenance component of €16,000 per annum. There are six Faculty Ussher Fellowships in every academic year. Three are allocated to successful applicants in the Faculty of Arts, Humanities and Social Science; two for the Faculty of Engineering, Mathematics and Science and one for the Faculty of Health Sciences. There are, in addition, five named Ussher Fellowships individually awarded every three years.

- *Postgraduate Studentships (Award code 1252)*

There are 65 Postgraduate Research Studentships offered annually to highly qualified candidates to enable them to undertake postgraduate studies in the College. The holder is required to engage in teaching-related activities, as designated by their Director of Teaching and Learning (Postgraduate), to a maximum of six hours per week. The awards are allocated to each Faculty in proportion to the number of research students registered the previous year. For EU and non-EU fee-paying students they provide an annual maintenance of €8,000 and full fee remission.

In 2008/09 changes were made to the internal system of allocating these awards. Each Faculty now allocates studentships to their individual schools early in the calendar year, and the schools nominate recipients accordingly. Two further significant changes were made: continuing students on the research register are now eligible to apply for these awards, and each individual award can be reallocated on an annual basis if the school so wishes. There have been no changes to the terms of the studentship and stipend (i.e. full fee remission for 3 years and an annual stipend of €8,000).

- *One-Year Postgraduate Research Awards for Continuing Students (Award code 7017)*

These awards have been phased out and the academic year 2009/10 is the final year in which these awards will be allocated.

9. Travel Grants

The GSO administers a travel grant scheme which receives funding from composite sources, such as the Benefaction Fund (called the Graduate Studies Research Travel Fund) yielding around €16,000 annually and from the Trinity Trust. Allocations are made to graduate research students for attendance at conferences related to their research or for students who wish to carry out research abroad to supplement research already undertaken in Ireland. Awards are made quarterly and applications are made in advance of travel. Application details are available on the GSO website.²

In the academic year 2008/09, 157 students were granted a total sum of €59,398.35. This represents a decrease on the allocations in 2007/08 when 142 students were allocated €70,420.31. The total amount claimed and reimbursed for the year by the end of September 2009 was €52,720.62.

Destination	No. of students who applied in 2008/09*	No. of students allocated funding in 2008/09*	Amount requested in 2008/09*	Amount allocated in 2008/09*	Amount claimed in 2008/09*
Europe	114	101	€50,543.99	€26,362.72	€24,742.04
USA & Canada	43	38	€24,247.89	€21,842.17	€18,081.65
Rest of World	25	18	€23,798.29	€11,193.46	€9,896.93
Total	182	157	€98,590.17	€59,398.35	€52,720.62

Table 9. Travel grant applications and reimbursements in 2008/09 (*all figures from the accounting period from 1 October 2008 to the end of September 2009)

10. Publications

The GSO is responsible for the production of three major publications and sources of information. These are the *University Calendar Part 2 for Graduate Studies and Higher Degrees*, the *Postgraduate Prospectus* and the Graduate Studies Office website.

- *The University of Dublin Calendar Part 2 for 2008/09*

The *University Calendar Part 2* contains the rules governing the academic progress and conduct of all postgraduate students, both taught and research. Since 1999/00 the *Calendar Part 2* has included the set of general regulations applicable to all postgraduate students, as well as more detailed regulations relating to students undertaking research and taught courses. This largely eliminates the need to refer to the *Calendar Part 1* for postgraduate matters. Offprints of the *Calendar Part 2* are given to all staff and all postgraduate students at registration and are now sent, *gratis*, to all universities in Ireland. There were 5,000 copies of the *Calendar Part 2* printed in 2006/07; 6,000 in 2007/08 and 6,500 in 2008/09.

² http://www.tcd.ie/Graduate_Studies/currentstudents/funding/travelgrants/index.php

- *Postgraduate Prospectus 2009*

Since 1998 the *Postgraduate Prospectus* has been the primary printed form of publicity produced by the GSO for graduate students. It is distributed *gratis* to all intending applicants and all academic staff of the College. It is also sent to all universities in Ireland and the U.K., as well as to a selection of major institutions in Europe and elsewhere.

- *Graduate Studies website*

There have been over 60,000 visits (unique and return visitors), to the website so far in 2010, with the most popular pages being the Prospectus and the Taught Courses listing. Online traffic comes mostly from within Ireland, followed by the EU member states, USA and India. Individual web visitors have come from as far away as New Zealand, Tuvalu and Nepal. Additionally, many hits have been received from Non-Profit Organisations, international government agencies and educational websites in the USA.

11. Other Reporting Items

- *Postgraduate Open Day*

The Graduate Studies Office hosted the annual Postgraduate Open Day on February 5th 2009 to attract potential taught and research students to the College. This event was attended by representatives from each school and was advertised nationally and internationally, via the web, email and print.

The event attracted c.a. 550 prospective students and feedback data was gathered from 51 (9%) of these at entry. 34% of those that responded were interested in a taught programme; 36% were interested in research and 30% were undecided.

This data indicates that the primary areas of interest for taught programmes were Business (7.8% of respondents indicated this as their preference); Engineering, English and Computer Science (3.9% each). The primary areas of interest for research programmes were Engineering (9.8%) and Natural Sciences (7.8%).

Additional data gathered indicates that of those who attended the Postgraduate Open Day 42% heard about it via the Trinity College website, 36% were notified of the event via email, 4% through poster advertising and the remainder through a combination of press advertising and word of mouth.

- *Strategic Innovation Fund (SIF)*

SIF I: The Dean of Graduate Studies continued to coordinate the College's postgraduate participation in the SIF I initiative to develop generic training modules for research students, in collaboration with UCC and NUIG. Several events were run for six inter-institutional high-level generic modules, which can be incorporated into Ph.D. student programmes at the partner institutions. TCD coordinated two modules on "Research Ethics" and "Statistics and Data Analysis", and participated in four other modules led by NUIG ("Commercialisation of Research and Technology Transfer" and "Information Literacy") and by UCC ("Research Methods for the Life Sciences" and "Teaching and Learning Skills").

SIF II: As part of the Graduate Education under SIF2 Dublin Region Higher Education Alliance (DRHEA) project, several schools in College developed, in collaboration with UCD, DCU, NUIM, DIT and ITT, advanced Ph.D. modules in a number of disciplines. Despite funding cuts, significant progress has been made. The Dean serves on the steering committee for this programme.

Fourth Level Network

The Dean of Graduate Studies continues to represent Trinity College Dublin on the IUA's Fourth Level Network, which has proved to be a very successful forum for collaboration and communication between the Deans of Graduate Studies from the 7 Universities.

▪ *Supervisor supports*

The Dean of Graduate Studies provided a number of information sessions for new staff on supervision, and participated in developments of further supervision supports in collaboration with CAPSL. A collaborative proposal with UCC and NUIG was also funded by NAIRTL, which will provide further opportunities for developing this area.

12. Postgraduate Admissions Data 2009/10

Postgraduate admissions data have been incorporated in the GSO Annual Report since 2004, and include detailed admissions data for both research degrees and taught courses for the current academic year 2009/10 with information on the gender, fee status (EU/Non-EU), and delivery format (full-/part-time) of applicants.

a) Research applications: entry in April 2009, October 2009 and April 2010

- The data presented in Appendix 7 show applications to the research register as of the 4th March 2010. There are 969 applicants, with the Schools of Medicine, Social Sciences and Philosophy, and Engineering having received the greatest number of applications (106, 103 and 101 respectively), the School of Psychology received 98 applications, Computer Science and Statistics over 50, three Schools received over 40 applications, five Schools received between 30 and 40 applications, five Schools received between 20 and 30 applications and six Schools received between 10 and 20 applications each.
- Of the applications received, 82.7% were offered places on the research register. This is approximately 7% more than in 2008/09, when 75.1% of applicants were accepted.
- There is an 85.3% take up of places offered: 719 offers were made and 613 students registered. This is a slight decrease on last year when 90.3% of applicants who were offered places registered for study.
- As of 4th March 2010, there were 613 students registered on year 1 of the register – this represents an increase of 29 students on the number on year 1 of the register 19th January 2009. Of these students, 15.5% are registered with the School of Medicine, 11.7% with the School of Engineering, 7.8% with the School of Psychology and 7.2% School of Computer Science and Statistics.
- The total number of registered research students as of 24th February 2010 was 2107. Of this number, the majority (1798 or 85.3%) are within the timescale of 2 years for Masters/4 years for Ph.D. for which HEA funding is available. 94 students (4.5%) remain on the Masters register in year 3 and beyond, and 215 students are currently on the Ph.D. register in year 5 and upwards. The total number of students who fall outside the recommended timescale is 309, or 14.6% of total registered research students.

b) Applications for taught courses: entry in October 2009 and January 2010

- The data presented in Appendix 8 show applications to postgraduate taught courses in year 1 for new entrants as of the end of February 2010. 5,477 taught applications have been received by the GSO *via* PAC. Direct admissions, via the schools account for approximately 1,400 additional applications. In total, 6,877 applications were recorded as received for taught courses for the 2009/10 academic year.

- Applications for entry to postgraduate taught courses in 2009/10 were processed in two ways:

- 1) Via the PAC (Postgraduate Application Centre) online system. Applications for the majority of taught postgraduate courses were processed entirely through this system following a successful pilot of the system in 2006/07. A total of 5,477 applications for 154 courses were processed through this system for intake in October 2009 and January 2010.
- 2) Through direct admissions: applicants apply directly to the School in which they intend to study and the Graduate Studies Office subsequently receives the files of those applicants who are to be offered places.

- The data presented in Appendix 8 shows that of the 5,477 applications received for taught courses (Masters and P. Grad. Dip.s) via PAC, 33% accepted the offer (1,811 students).

- 1764 of these students had registered by December 22nd 2009.

- The breakdown of registered students into EU and non-EU fee categories indicates that 90.2% of taught course students (1,957) are categorised as EU for fee purposes, and 9.8% (212) non-EU.

Appendix 1. Taught Postgraduate Courses – Student Numbers 2005/06 to 2009/10

FACULTY OF ARTS, HUMANITIES & SOCIAL SCIENCES								
School	Code	Course Title	Duration	2005/06	2006/07	2007/08	2008/09	2009/10
Business	110	Master in Business Administration (MBA)	1	28	23	28	29	19
	566	M.Sc. in Finance	1				26	27
	567		2				6	8
	146	M.Sc. (Management) in Organisation Behaviour	2	32		19		10
	119	M.Sc. (Management)	2	12	2	5	7	6
	679	M.Sc. (Management) in International Business	2	33				
	792	Masters in International Management	1					11
	760	PG Dip. in Management	1				1	
Drama, Film & Music	721	M.Phil. in Film and History	1		9	10	8	14
	738	M.Phil. in Theatre and Performance	1		6	5	7	12
	780	M.Phil. in Irish Film, Music & Theatre	1				DNR	5
	779	M.Phil. in Musicology and Music Theory	1				DNR	DNR
Education	749	Master in Education	2		53	59	66	50
	752		1	12	10	8	3	3
	232	Master in Studies (School Leadership)	1	24	17	42	36	23
	601	H.Dip. in Education (Primary Teaching)	1	78	87	85	163	163
	762	PG Dip. in Education (Secondary Teaching)	1	124	128	131	126	128
	770	In Service Education - 4 modules (SLSS)	1			12	28	
	771	In Service Education - Disability Needs Assessment	1			20		
English	255	M.Phil. in Creative Writing	1	14	15	16	15	13
	789	M.Phil. in Irish Writing	1	18	17	26	12	17
	764	M.Phil. in Literatures of the Americas	1			6	15	7
	709	M.Phil. in Popular Literature	1	22	19	24	22	26

Histories & Humanities	732	M.Phil. in Modern Irish History	1	12	10	22	13	20
	778	M.Phil. in Classics	1				7	10
	550	M.Phil. in Gender and Women's Studies	1			9	6	10
	551		2		6	1	2	2
	704	M.Phil. in Irish Art History	1	11	12	10	10	11
	225	M.Phil. in Medieval History	1	4	8	1	6	7
	171	M.Phil. in Reformation & Enlightenment Studies	1	4	8	1	DNR	5

Languages, Literature & Cultural Studies	745	M.Phil. in Comparative Literature	1		3	4	5	13
	628	M.Phil. in Early Irish	2		2		1	
	795	M.Phil. in European Studies	1					9
	742	M.Phil. in German Literature with Language Pedagogy	1			2	1	DNR
	715	M.Phil. in Literary Translation	1	10	13	16	10	9
	671	M.Phil. in Medieval Language, Literature and Culture	1	6	4	2	5	7
	627	PG Dip. in Old Irish	1	1		2		
	185	M.Phil. in Textual and Visual Studies	1	6	6	5	DNR	4

Law	607	LL.M. (Master in Laws)	1	61	71	45	73	101
------------	-----	------------------------	---	----	----	----	----	-----

Linguistics, Speech & Communication Sciences	518	M.Phil. in Applied Linguistics	1			7	11	5
	519		2	10	12	3	1	3
	761	M.Phil. in English Language Teaching	1			6	6	3
	520	M.Phil. in Linguistics	1			9	8	13
	521		2	9	7	5		1
	534	M.Phil. in Speech and Language Processing	1	2	4	5	4	4
	758	M.Sc. in Clinical Speech and Language Studies	2		12	5	6	5
	759	PG Dip. in Clinical Speech and Language Studies	1				2	8

Psychology	785	M.Sc. In Applied Behaviour Analysis	1				8	10
	743	M.Sc. in Applied Psychology	1		20	25	34	34
	744		2		10	7	8	3
	763	M.Sc. In Clinical Supervision (Psychology)	1				6	9
			2				6	5
	205	M.Sc. in Counselling Psychology	2	20	20	20	20	
	720	H.Dip. in Psychology	2	17	22	18	20	18
	784	PG Dip. in Applied Behaviour Analysis	1			22	20	20
712	PG Dip. in Clinical Supervision (Psychology)	1	8	8	4	5	2	

Religions, Theology & Ecumenics	514	M.Phil. in Ecumenics	1			9	3	9
	515		2			2	4	1
	528	M.Phil. in Peace Studies	1	49	45	36	31	28
	529		2			6	8	2
	552	M.Phil. in Reconciliation Studies	1	13	15	11	6	8
	553		2	12	10	1	2	2
	790	Master in Theological Studies (Mode A)	3					
	791	Master in Theological Studies (Mode B)	6					5
	673	PG Dip. in Conflict & Dispute Resolution Studies	1	15	11	20	24	17

Social Sciences & Philosophy	262	M.Phil. in Ethnic & Racial Studies	1	14	13	12	12	6
	214	M.Phil. in Psychoanalytic Studies	1	9	8	6	11	8
	568	M.Sc. in Comparative European Politics	1				18	19
	569		2				2	
	506	M.Sc. in Economics	1	23	28	19	20	24
	507		2				1	1
	645	M.Sc. in Economic Policy Studies	2	15			19	No intake

Social Work & Policy	252	M.Sc. In Applied Social Research	1	22	19	25	19	24
	235	M.Sc. in Child Protection & Welfare	1	3	7	6	1	5
	625	M.Sc. In Drug and Alcohol Policy	2		10		10	
	669	Master in Social Work	2	21	22	22	22	20
	229	PG Dip. in Child Protection & Welfare	1	16	16	15	13	17

FACULTY OF ENGINEERING, MATHS & SCIENCE								
School	Code	Course Title	Duration	2005/06	2006/07	2007/08	2008/09	2009/10
Computer Science	617	M.Sc. in Health Informatics	2	19	13	18	21	25
	781	M.Sc. in Interactive Digital Media	1				22	15
	769	M.Sc. in Interactive Entertainment Technology	1			14	21	20
	700	M.Sc. in Management of Information Systems	2	32	33	37	43	33
	739	M.Sc. in Mobile and Ubiquitous Computing	2	24	17	16	10	16
	619	M.Sc. in Networks & Distributed Systems	1	16	15	19	16	24
	750	M.Sc. in Technology and Learning	2	27	26	26	24	21
	616	PG Dip. in Health Informatics	1	15	23	16		
	129	PG Dip. in Statistics*	1	96	95	111	132	110*
	807	PG Dip in Computing (Conv.) with Advanced Interdisciplinary Outlook	2					5
	805	PG Dip in Computing with Advanced Interdisciplinary Outlook	2					8
Engineering	542	M.Sc. in Bioengineering	1			13	14	13
	543		2	12	9	3	5	2
	524	M.Sc. in Civil Engineering	1	23	24	12	8	18
	525		2			11	11	
	733	M.Sc. in Mechanical Engineering (ERASMUS MUNDUS)	2	7	4	4	10	3
	657	M.Sc. in Integrated System Design	2	1	DNR	DNR	DNR	DNR
	257	M.Phil. Music & Media Technologies	1	21	16	18	13	12
	706	PG Dip. in Applied Building Repair & Conservation	1	15	11	16	12	14
	614	PG Dip. in Construction Law & Contract Admin	1	26	23	26	25	26
	201	PG Dip. in Environmental Engineering	1	23	23	34	28	24

	637	PG Dip. in Fire Safety Practice	1	28	14	29	23	21
	705	PG Dip. in Health and Safety Construction	1			21	11	10
	186	PG Dip. in Highway and Geotechnical Engineering	1				16	7
	260	PG Dip. in Music & Media Technologies	2	20	19	19	19	13
		PG Dip. in Physical Planning	1	1	DNR	DNR	DNR	DNR
	136	PG Dip. in Project Management	1	79	71	85	85	65

Mathematics	626	M.Sc. in High Performance Computing	1	7	7	6	8	7
--------------------	-----	-------------------------------------	---	---	---	---	---	---

Natural Science	748	M.Sc. in Biodiversity and Conservation	1		14	15	16	16
	803	M.Sc. in Environment & Development	1				14	14
	169	M.Sc. in Environmental Sciences	1	17	19	17	12	15

Chemistry	753	M.Sc. In Chemical & Biological Techniques	2					DNR
	923	PG Dip. In Chemical & Biological Techniques	3					DNR

* 30 students taking as primary course (fee-paying)/ 80 students taking as secondary course (free)

FACULTY OF HEALTH SCIENCES								
School	Code	Course Title	Duration	2005/06	2006/07	2007/08	2008/09	2009/10
Medicine	782	M.Sc. In Cardiovascular Rehabilitation & Prevention	1					1
	783		2					3
	736	M.Sc. in Clinical Chemistry	2	11	6	7	5	1
	223	M.Sc. in Cardiology	3			8	No intake	DNR
	224	M.Sc. in Child & Adolescent Analytic Psychotherapy	3	12	No intake	No intake	DNR	No intake
	799	M.Sc. in Exercise Physiology	1	5	6	5	5	9
	731	M.Sc. in Global Health	1	16	19	22	14	20
	254	M.Sc. Health Services Management	2	16	22	26	21	15
	713	M.Sc. in Medical Imaging	1				4	11
	557	M.Sc. In Molecular Pathology	2	30	27	31	23	16
	532	M.Sc. in Molecular Medicine	1	18	17	13	18	22

	746	M.Sc. in Neuroscience (ft)	1		11	19	16	21
	618	M.Sc. in Occupational Therapy	2		3	No intake	5	No intake
	708	M.Sc. in Pharmaceutical Medicine	2	4	3	2	10	8
	620	M.Sc. Psychoanalytic Psychotherapy	3	11	No intake	No intake	9	No intake
	562	M.Sc. Physical Sciences in Medicine	1			10	11	10
	563		2			2	1	
	787	M.Sc. in Respiratory Physiotherapy	2					2
	208	M.Sc. in Sports Medicine	1	5	7	7	10	9
	756	PG Dip. in Cognitive Psychotherapy	1		11	12	9	10
	990	PG Dip. in Exercise Physiology	1	9	7	14	3	
	126	PG Dip. in Gynaecology & Obstetrics	1	10	11	9	DNR	DNR
	707	PG Dip. in Pharmaceutical Medicine	2	3	4	3	4	3

Nursing & Midwifery	802	M.Sc. in Cancer Care	2					13
	531	M.Sc. in Gerontological Nursing	2	3	8	10	7	17
	735	M.Sc. in Mental Health	2		31	26	41	34
	539	M.Sc. In Midwifery	2	7	3	3	8	5
	537	M.Sc. In Nursing	2	29	16	15	16	11
	747	M.Sc. in Palliative Care	2			10	11	5
	656	PG Dip. in Clinical Health Sciences Education	1	1	2	3	7	2
	240	PG Dip. in Gerontological Nursing	1	15				DNR
	648	PG Dip. in Midwifery	2	45	54	41		44
	554	PG Dip. in Oncological Nursing	1				18	
	665		2	8	12	15		
	646	PG Dip. in Paediatric Nursing	2	14	8			DNR
	649	PG Dip. in Specialist Nursing	1	66	52	45	29	47
	755	Higher Diploma in Children's Nursing (R.C.N.)	1		14	14	11	13

Pharmacy	659	M.Sc. in Community Pharmacy	1	5		5		4
	222	M.Sc. in Hospital Pharmacy	2	10			10	2
	544	M.Sc. in Pharmaceutical Analysis	1			6	7	8
	545		2	6	7	4		2
	726	M.Sc. in Pharmaceutical Manufacturing Technology	1		8	3	6	27
	546	M.Sc. in Pharmaceutical Technology	1				1	7
	635		2	4				
	658	PG Dip. in Community Pharmacy	2		4	15	8	6
202	PG Dip. in Pharmaceutical Manufacturing Technology	2	30				2	

Dental Science	622	Master in Dental Surgery	3	7	5	9		
	621	PG Dip. in Clinical Dentistry	3	24			21	
	774	PG Dip. In Conscious Sedation	2			6		

*Appendix 2. Results of approved Research and Professional Degree Examinations (by degree)
for the past three years (covering the period from October 2008 to the end of September
2009)*

2008-2009

Degree	Total approved examinations	Degree awarded as it stands	Minor corrections required	Referred for major revisions	Lower degree awarded (from a major revision)	Failed
Ph.D.	275	43	211	20	1*	0
M.Sc.	44	4	40	0	0	0
M.Litt.	17	7	9	1	0	0
M.D.	13	1	10	2	0	0
D.Dent.Ch.	6	1	5	0	0	0
M.Ch.	5	0	4	1	0	0
M.A.I.	2	0	2	0	0	0
Total	362	56	281	24	0	0

**1 PhD's awarded Lower Degree, 1 x Mlitt*

2007-2008

Degree	Total approved examinations	Degree awarded as it stands	Minor corrections required	Referred for major revisions	Lower degree awarded (from a major revision)	Failed
Ph.D.	261	25	218	16	2*	0
M.Sc.	62	3	58	2	0	0
M.Litt.	21	5	15	2	0	0
M.D.	7	1	6	0	0	0
M.Dent.Ch.	7	0	7	0	0	0
M.Ch.	2	0	2	0	0	0
M.A.I.	1	0	1	0	0	0
Total	361	33	307	20	2	0

**2 PhD's awarded Lower Degree, 1 x Mlitt / 1 x M.Sc.(following major revisions)*

2006-2007

Degree	Total approved examinations	Degree awarded as it stands	Minor corrections required	Referred for major revisions	Lower degree awarded (from a major revision)	Failed
Ph.D.	237	37	183	18	1 M.Litt.	0
M.Sc.	49	12	35	2		0
M.Litt.	25	3	17	4		0
M.D.	11	4	7	0		0
M.Dent.Ch.	4	0	4	0		0
M.Ch.	4	0	4	0		0
Total	330	56	250	24		0

2005-2006

Degree	Total approved examinations	Degree awarded as it stands	Minor corrections required	Referred for major revisions	Lower degree awarded (from a major revision)	Failed
Ph.D.	222	27	185	11	1 M.Sc.	0
M.Sc.	36	3	31	1		0
M.Litt.	17	2	15	0		0
M.D.	11	2	9	0		0
M.Dent.Ch.	9	0	9	0		0
M.A.I.	2	0	2	0		0
Total	297	34	251	12		0

Appendix 3. Number of research degrees awarded by Faculty Grouping and degree in 2008/09 (includes September 2009)

Faculty	Ph.D.			M.Sc.			M.Litt.			M.D.			M.Dent.Ch. / D.Ch.Dent.			M.Ch.			M.A.I.		
	06/07	07/08	08/09	06/07	07/08	08/09	06/07	07/08	08/09	06/07	07/08	08/09	06/07	07/08	08/09	06/07	07/08	08/09	06/07	07/08	08/09
Arts, Humanities and Social Sciences	80	102	95	5	2	2	25	22	17	0	0	0	0	0	0	0	0	0	0	0	0
Engineering, Mathematics and Science	123	125	121	28	45	28	0	0	0	0	0	0	0	0	0	0	0	0	0	1	2
Health Sciences	34	32	38	16	17	14	0	0	0	11	7	11	4	7	6	4	2	4	0	0	0
TOTAL	237	259	254	49	64	44	25	22	17	11	7	11	4	7	6	4	2	4	0	1	2

Appendix 4. Nationality of students in 2007/08 and 2008/09

CONTINENT	COUNTRY	2007/08	2008/09	Difference	Sub-Totals in 0708	Sub-Totals in 0809	Overall change in 0809
AFRICA	BOTSWANA	1	1	0			
	BURKINA FASO	1		-1			
	BURUNDI	1	1	0			
	CAMEROON		1	1			
	CONGO, DEMOCRATIC REPUBL	1		-1			
	DAHOMY			0			
	EGYPT	5	7	2			
	ERITREA	1		-1			
	ETHIOPIA	9	5	-4			
	GHANA	1	2	1			
	GUINEA	2	2	0			
	KENYA	1	3	2			
	LIBYAN ARAB JAMAHIRIYA	11	8	-3			
	MALAWI		1	1			
	MAURITIUS			0			
	NIGERIA	20	23	3			
	RWANDA	1	1	0			
	SIERRA LEONE	1	1	0			
	SOUTH AFRICA	3	4	1			
	SUDAN	8	9	1			
SWAZILAND	1		-1				
TANZANIA	1	1	0				
UGANDA	5	7	2				
ZAMBIA	2	2	0				
ZIMBABWE	5	8	3	81	87	6	
ASIA	BAHRAIN	2	3	1			
	BANGLADESH	3	7	4			
	BRUNEI DARASSALAM	2	1	-1			
	CHINA	63	60	-3			
	DEM. PEOPLE'S REP. OF KOR	1		-1			
	HONG KONG	4	3	-1			
	INDIA	62	58	-4			
	INDONESIA	1	1	0			
	IRAN, ISLAMIC REPUBLIC OF	4	5	1			
	IRAQ	4	2	-2			
	ISRAEL	1	3	2			
	JAPAN	9	7	-2			
	JORDAN	8	7	-1			
	KUWAIT	1		-1			
	LEBANON	2		-2			
MACAO	1	1	0				

	COUNTRY	2007/08	2008/09	Difference	Sub-Totals in 0708	Sub-Totals in 0809	Overall change in 0809
	MALAYSIA	11	12	1			
	MONGOLIA		1	1			
	NEPAL	1	4	3			
	OMAN	1	1	0			
	PAKISTAN	21	11	-10			
	PALESTINE	2		-2			
	PEOPLE'S DEM.REP.OF YEMEN	1		-1			
	PHILIPPINES	4	7	3			
	QATAR			0			
	REP. OF KOREA	2	3	1			
	SINGAPORE	2	4	2			
	SRI LANKA	4	3	-1			
	SYRIAN ARAB REPUBLIC	1	1	0			
	TAIWAN, PROVINCE OF CHINA	3	5	2			
	THAILAND	3	2	-1			
	UNITED ARAB EMIRATES	1	1	0			
	VIET NAM		5	5	225	218	-7
AUSTRALASIA	AUSTRALIA	10	6	-4			
	NEW ZEALAND	5	5	0	15	11	-4
NORTH & CENTRAL AMERICA	CANADA	38	40	2			
	COSTA RICA	2		-2			
	CUBA	1		-1			
	DOMINICAN REPUBLIC	1		-1			
	GUATEMALA	1	1	0			
	JAMAICA	3	3	0			
	MEXICO	7	6	-1			
	ST.VINCENT & GRENADINES		1	1			
	UNITED STATES OF AMERICA	180	177	-3	233	228	-5
SOUTH AMERICA	ARGENTINA	1	1	0			
	BRAZIL	5	6	1			
	CHILE		2	2			
	COLOMBIA	3	3	0			
	GUYANA	1		-1			
	URUGUAY	1		-1	11	12	1
EUROPE (EU)	AUSTRIA	5	7	2			
	BELGIUM	5	8	3			
	BULGARIA	5	4	-1			
	CYPRUS	2	1	-1			
	CZECH REPUBLIC	5	7	2			
	DENMARK	4	2	-2			

	COUNTRY	2007/08	2008/09	Difference	Sub-Totals in 0708	Sub-Totals in 0809	Overall change in 0809
	ESTONIA	3	3	0			
	FINLAND	1	5	4			
	FRANCE	42	36	-6			
	GERMANY	53	79	26			
	GREAT BRITAIN	165	207	42			
	GREECE	22	30	8			
	HUNGARY	4	5	1			
	IRELAND	3919	3960	41			
	ITALY	62	74	12			
	LITHUANIA	2	6	4			
	LUXEMBOURG		1	1			
	MALTA	7	5	-2			
	POLAND	57	71	14			
	PORTUGAL	4	10	6			
	ROMANIA	4	12	8			
	SLOVAKIA	1	4	3			
	SLOVENIA	2	1	-1			
	SPAIN	37	39	2			
	SWEDEN	5	9	4			
	THE NETHERLANDS	15	16	1	4431	4602	171
EUROPE (NON-EU)	BELARUS	2	2	0			
	CROATIA	1	2	1			
	GEORGIA	2	1	-1			
	ICELAND	2	2	0			
	MACEDONIA		1	1			
	MOLDOVA	1		-1			
	NORWAY	3	4	1			
	RUSSIAN FEDERATION	15	24	9			
	SAN MARINO	1		-1			
	SERBIA		3	3			
	SWITZERLAND	4	3	-1			
	TURKEY	5	6	1			
	UKRAINE			0			
	YUGOSLAVIA	4		-4	40	48	8
	TOTAL	5036	5206	170	5036	5206	170

*data has been extracted on basis of nationality rather than country / county code, to ensure the inclusion of international students who provide a home address based in Ireland.

Appendix 5. List of external examiners for research degrees by faculty in 2008/09 listed alphabetically by school

Faculty of Arts, Humanities and Social Sciences			
<i>Name</i>	<i>Degree</i>	<i>School</i>	<i>Academic Address</i>
Dr A. O'Driscoll	Ph.D.	Business	School of Marketing, D.I.T.
Dr M. O'Connell	M.Litt.	Business	School of Psychology, U.C.D.
Dr P. Connolly	M.Litt.	Business	Institute of Public Administration, Dublin
Dr S. Vangen	Ph.D.	Business	Open University Business School, Milton Keynes, U.K.
Prof. A. Kakabadse	Ph.D.	Business	School of Management, Cranfield University, U.K.
Prof. D. Carson	Ph.D.	Business	Dept. of Marketing, Entrepreneurship and Strategy, University of Ulster, Co. Antrim, Northern Ireland, U.K.
Prof. F. Wijkstrom	Ph.D.	Business	Economic Research Institute, Stockholm School of Economics, Sweden
Prof. G. Hall	Ph.D.	Business	Cardiff School of Management, University of Wales, U.K.
Prof. J. Harrow	Ph.D.	Business	Centre for Charity Effectiveness, Cass Business School, London, U.K.
Prof. N. Rashford	Ph.D.	Business	St. Joseph's University, Pennsylvania, U.S.A.
Prof. P. Chelley-Steeley	Ph.D.	Business	Aston Business School, University of Aston, Birmingham, U.K.
Prof. P. Kawalek	Ph.D.	Business	Manchester Business School, University of Manchester, U.K.
Prof. R. Strange	Ph.D.	Business	International Business School, King's College London, U.K.
Prof. S. Stevenson	Ph.D.	Business	Cass Business School, City University London, U.K.
Prof. A. Erskine	M.Litt.	Classics	School of History and Classics, University of Edinburgh, Scotland, U.K.
Dr B. Gilmore	M.Litt.	Drama, Film and Music	School of Arts, Brunel University, Middlesex, U.K.
Dr C. Morash	Ph.D.	Drama, Film and Music	Centre for Media Studies, N.U.I. Maynooth, Co. Kildare
Prof. A. Gibson	Ph.D.	Drama, Film and Music	Dept. of English, University of London, U.K.
Prof. W. Brooks	Ph.D.	Drama, Film and Music	Dept. of Music, University of York, U.K.
Dr A. McCully	Ph.D.	Education	School of Education, University of Ulster, Northern Ireland, U.K.
Dr R. Jones	Ph.D.	Education	School of Psychology, University of Wales-Bangor, U.K.
Mrs. H. Farley	Ph.D.	Education	School of Marketing, Entrepreneurship and Strategy, University of Ulster, Northern Ireland, U.K.
Prof. C. Galvin	Ph.D.	Education	College of Human Sciences, U.C.D.
Prof. M. Sheehan	Ph.D.	Education	Glamorgan Business School, University of Glamorgan, Wales, U.K.
Dr A. Putter	Ph.D.	English	Dept. of English, University of Bristol, U.K.
Dr J. Brannigan	Ph.D.	English	School of English, Drama and Film, U.C.D.
Dr M. Campbell	Ph.D.	English	School of English Language, Literature and Linguistics, University of Sheffield, U.K.
Dr N. McDonald	Ph.D.	English	Dept. of English and Related Literature, University of York, U.K.
Dr P. McDonald	Ph.D.	English	Christchurch, Oxford, U.K.
Dr S. Abbott	Ph.D.	English	School of Arts, Roehampton University, London, U.K.
Prof. A. Blamires	Ph.D.	English	Dept. of English and Comparative Literature, Goldsmiths College, University of London, U.K.
Prof. A. Hiscock	Ph.D.	English	School of English, Bangor University, U.K.
Prof. D. Punter	Ph.D.	English	Dept. of English, University of Bristol, U.K.
Dr B. Kumin	M.Litt.	Histories & Humanities	Dept. of History, University of Warwick, Coventry, U.K.
Dr E. Delaney	Ph.D.	Histories & Humanities	School of History, University of Edinburgh, Scotland, U.K.
Dr F. O'Rourke	M.Litt.	Histories & Humanities	Dept. of Philosophy, U.C.D.

Dr J. Barry	Ph.D.	Histories & Humanities	Dept. of History, University of Exeter, U.K.
Dr K. O'Connor	Ph.D.	Histories & Humanities	Dept. of Archaeology, N.U.I., Co. Galway
Dr R. Eales	Ph.D.	Histories & Humanities	School of History, University of Kent, U.K.
Dr R. Gillespie	Ph.D.	Histories & Humanities	Dept. of History, N.U.I. Maynooth, Co. Kildare
Dr T. Barnard	Ph.D.	Histories & Humanities	Hertford College, Oxford, U.K.
Dr T. Dooley	M.Litt.	Histories & Humanities	Dept. of History, N.U.I. Maynooth, Co. Kildare
Dr T. O'Connor	Ph.D.	Histories & Humanities	Dept. of History, N.U.I. Maynooth, Co. Kildare
Prof. A. Poulter	M.Litt.	Histories & Humanities	Archaeology and Classics Building, University of Nottingham, U.K.
Prof. B. Mercer Walker	M.Litt.	Histories & Humanities	School of Politics, International Studies and Philosophy, Queen's University Belfast, Northern Ireland, U.K.
Prof. C. Lennon	Ph.D.	Histories & Humanities	Dept. of History, N.U.I. Maynooth, Co. Kildare
Prof. C. O'Grada	Ph.D.	Histories & Humanities	Dept. of Economics, U.C.D.
Prof. D. Counts	Ph.D.	Histories & Humanities	Dept. of Art History, University of Wisconsin-Milwaukee, U.S.A
Prof. J. Cleary	Ph.D.	Histories & Humanities	Dept. of Philosophy, N.U.I. Maynooth, Co. Kildare
Prof. M. Laffan	Ph.D.	Histories & Humanities	School of Histories and Archives, U.C.D.
Prof. S. Harrison	Ph.D.	Histories & Humanities	Corpus Christi College, Oxford, U.K.
Prof. T. Garvin	Ph.D.	Histories & Humanities	School of Politics and International Relations, U.C.D.
Prof. T. Lodge	Ph.D.	Histories & Humanities	Dept. of Politics and Public Administration, University of Limerick
Dr B. Haines	Ph.D.	Languages, Literatures and Cultural Studies	School of Arts, Swansea University, U.K.
Dr E. Coleman	Ph.D.	Languages, Literatures and Cultural Studies	School of History and Archives, U.C.D.
Dr S. Jordan	Ph.D.	Languages, Literatures and Cultural Studies	School of Languages, Linguistics and Film, Queen Mary University of London, U.K.
Prof. A. Beihammer	Ph.D.	Languages, Literatures and Cultural Studies	Dept. of History and Archaeology, University of Cyprus, Nicosia, Cyprus
Prof. C. Balme	Ph.D.	Languages, Literatures and Cultural Studies	Institut für Theaterwissenschaft, LMU Munich, Germany
Prof. C. O'Brien	M.Litt.	Languages, Literatures and Cultural Studies	Dept. of Italian, N.U.I., Co. Galway
Prof. J. Ridion	Ph.D.	Languages, Literatures and Cultural Studies	Dept. of French, University of Nottingham, U.K.
Prof. S. Wood	Ph.D.	Languages, Literatures and Cultural Studies	School of Modern Languages, University of Leicester, U.K.
Dr A. McAuly	M.Litt.	Law	School of Law and Government, D.C.U.
Dr F. De Londres	M.Litt.	Law	Law School, U.C.D.
Dr P. Kenna	M.Litt.	Law	School of Law, N.U.I., Co. Galway
Prof. A. Tettenborn	Ph.D.	Law	School of Law, University of Exeter, U.K.
Prof. B. Clarke	Ph.D.	Law	School of Law, U.C.D.
Prof. I. O'Donnell	Ph.D.	Law	Institute of Criminology, U.C.D.
Prof. M. McGonagle	Ph.D.	Law	Law School, N.U.I., Co. Galway
Prof. M. Ryan	Ph.D.	Law	Dept. of Criminology, University of Greenwich, London, U.K.
Prof. W. Schabas	M.Litt.	Law	Irish Centre for Human Rights, Law School, N.U.I., Co. Galway
Prof. I. Ramsay	Ph.D.	Law	Kent Law School, University of Kent, U.K.
Dr C. Linse	Ph.D.	Linguistics, Speech and Communication Sciences	School of Education, Queen's University Belfast, Northern Ireland, U.K.
Prof. C. Baker	Ph.D.	Linguistics, Speech and Communication Sciences	School of Education, University of Wales, U.K.
Prof. C. Munoz Lahoz	Ph.D.	Linguistics, Speech and Communication Sciences	Dept. of Filologia Anglesa I Alemanya, Universitat de Barcelona, Spain
Prof. D. Coyle	Ph.D.	Linguistics, Speech and Communication Sciences	School of Education, University of Nottingham, U.K.

Prof. I. Gogolin	Ph.D.	Linguistics, Speech and Communication Sciences	Institute for Comparative and Multicultural Education, Universität Hamburg, Germany
Prof. P. Jaggard	Ph.D.	Linguistics, Speech and Communication Sciences	Dept. of Africa, University of London, U.K.
Prof. V. Cook	Ph.D.	Linguistics, Speech and Communication Sciences	School of Education, Communication and Language Sciences, University of Newcastle upon Tyne, U.K.
Prof. V. Kohonen	Ph.D.	Linguistics, Speech and Communication Sciences	Dept. of Teacher Education, University of Tampere, Finland
Dr M. Santos	Ph.D.	Psychology	Instituto Superior de Psicologia Aplicada, Lisbon, Portugal
Dr S. Guerin	M.Sc.	Psychology	School of Psychology, U.C.D.
Prof. A. Tasso	Ph.D.	Psychology	School of Psychology, University of Valle D'Aostra, Italy
Prof. G. Grote	Ph.D.	Psychology	Dept. of Management, Technology and Economics, Swiss Federal Institute of Technology, Zurich, Switzerland
Prof. L. Hewitt	Ph.D.	Psychology	Dept. of Communication Disorders, Bowling State Green University, Ohio, U.S.A.
Prof. M. Knauff	Ph.D.	Psychology	Experimentelle Kognitionpsychologie, Giessen, Germany
Prof. N. Ramsey	Ph.D.	Psychology	Dept. of Neurology and Neurosurgery, University Medical Centre Utrecht, The Netherlands
Prof. N. Roberts	Ph.D.	Psychology	School of Clinical Sciences, University of Liverpool, U.K.
Prof. R. Morris	Ph.D.	Psychology	Institute of Psychiatry, King's College London, U.K.
Dr C. Mitchell	M.Litt.	Religions, Theology and Ecumenics	School of Sociology, Queen's University Belfast, Northern Ireland, U.K.
Dr G. Evers	Ph.D.	Religions, Theology and Ecumenics	Dept. of Theology, KU Leuven, Belgium
Dr V. Joshi	Ph.D.	Religions, Theology and Ecumenics	Institute of Social and Cultural Anthropology, University of Oxford, U.K.
Prof. B. Leahy	Ph.D.	Religions, Theology and Ecumenics	St. Patrick's College, Maynooth, Co. Kildare
Prof. Dr. J. Verstraeten	Ph.D.	Religions, Theology and Ecumenics	Faculty of Theology, K.U. Leuven, Belgium
Prof. T. O'Keefe	Ph.D.	Religions, Theology and Ecumenics	Dept. of Philosophy, University of Ulster, Northern Ireland, U.K.
Dr J. O'Shea	Ph.D.	Social Sciences & Philosophy	School of Philosophy, U.C.D.
Dr K. Kapur	M.Litt.	Social Sciences & Philosophy	School of Economics, U.C.D.
Dr L. Spurling	M.Litt.	Social Sciences & Philosophy	School of Psychosocial Studies, Birkbeck College, London, U.K.
Dr M. Franklin	Ph.D.	Social Sciences & Philosophy	Transnational Communication and Global Media Programme, University of London, U.K.
Dr M. Guiliodori	Ph.D.	Social Sciences & Philosophy	Dept. of Economics, University of Amsterdam, The Netherlands
Dr R. Cooper	Ph.D.	Social Sciences & Philosophy	Dept. of Philosophy, Lancaster University, U.K.
Dr S. Shalkowski	Ph.D.	Social Sciences & Philosophy	Dept. of Philosophy, University of Leeds, U.K.
Dr W. Waxman	Ph.D.	Social Sciences & Philosophy	Dept. of Philosophy, N.U.I. Maynooth, Co. Kildare
Prof. A. Brewer	Ph.D.	Social Sciences & Philosophy	Dept. of Economics, University of Bristol, U.K.
Prof. A. Sparkes	Ph.D.	Social Sciences & Philosophy	Qualitative Research Unit, School of Sport and Health Sciences, University of Exeter, Devon, U.K.
Prof. B. McCabe	Ph.D.	Social Sciences & Philosophy	University of Liverpool Management School, U.K.
Prof. D. Beetham	Ph.D.	Social Sciences & Philosophy	Dept. of Politics, University of Leeds, U.K.
Prof. G. Bird	Ph.D.	Social Sciences & Philosophy	Dept. of Philosophy, University of Wales, U.K.
Prof. G. Pagoulatos	Ph.D.	Social Sciences & Philosophy	Athens University of Economics and Business, Greece
Prof. K. Gleditsch	Ph.D.	Social Sciences & Philosophy	Dept. of Government, University of Essex, U.K.
Prof. L. Ezrow	Ph.D.	Social Sciences & Philosophy	Dept. of Government, University of Essex, U.K.

Prof. P. Cloke	Ph.D.	Social Sciences & Philosophy	Dept. of Geography, University of Exeter, U.K.
Prof. P. Walsh	Ph.D.	Social Sciences & Philosophy	School of Politics and International Relations, U.C.D.
Prof. R. Doorenspleet	Ph.D.	Social Sciences & Philosophy	Dept. of Politics, University of Warwick, Coventry, U.K.
Prof. S. Hix	Ph.D.	Social Sciences & Philosophy	Dept. of Government, London School of Economics and Political Science, U.K.
Prof. S. O'Neill	Ph.D.	Social Sciences & Philosophy	Dept. of Politics, Queen's University Belfast, Northern Ireland, U.K.
Prof. S. Robinson	Ph.D.	Social Sciences & Philosophy	Dept. of Economics, University of Sussex, U.K.
Dr B. Thom	Ph.D.	Social Work and Social Policy	School of Health and Social Sciences, Middlesex University, U.K.
Dr J. Campbell	Ph.D.	Social Work and Social Policy	School of Sociology, Social Policy and Social Work, Queen's University Belfast, Northern Ireland, U.K.
Prof. Dr J. Outshoorn	Ph.D.	Social Work and Social Policy	Dept. of Politieke Wetenschap, Universiteit Leiden, The Netherlands
Prof. J. Pinkerton	Ph.D.	Social Work and Social Policy	The School of Sociology, Social Policy and Social Work, Queen's University Belfast, Northern Ireland, U.K.
Prof. M. Marshall	Ph.D.	Social Work and Social Policy	Dementia Services Development Centre, Stirling University, Scotland, U.K.
Faculty of Health Sciences			
Dr A. McDonald	D.Ch.Dent.	Dental Science	Prosthetics Unit, UCL Eastman, Dental Institute London, U.K.
Dr J. Wennstrom	D.Ch.Dent.	Dental Science	Institute of Odontology, University of Göteborg, Sweden
Dr M. Manogue	M.Sc.	Dental Science	School of Dentistry, University of Leeds, U.K.
Prof. B. Hube	Ph.D.	Dental Science	Dept. of Microbial Pathogenicity Mechanisms, Hans Knoell Institute, Jena, Germany
Prof. F. Allen	D.Ch.Dent.	Dental Science	Dept. of Restorative Dentistry, University Dental School and Hospital, U.C.C.
Prof. J. Ponton	Ph.D.	Dental Science	School of Medicine and Odontology, University of Basque Country, Spain
Prof. M. Kinirons	D.Ch.Dent.	Dental Science	University Dental School and Hospital, U.C.C.
Dr A. Scutt	Ph.D.	Medicine	School of Medicine and Biomedical Sciences, University of Sheffield, U.K.
Dr C. Loscher	Ph.D.	Medicine	Immunomodulation Research Group, D.C.U.
Dr D. Collins	M.Ch.	Medicine	Sports Surgery Clinic, Santry Demesne, Dublin
Dr D. Lyons	M.D.	Medicine	Dept. of Medical Science, University of Limerick
Dr D. Simpson	Ph.D.	Medicine	Centre for Vision Sciences, Queen's University Belfast, Northern Ireland, U.K.
Dr D. Williams	Ph.D.	Medicine	Dept. of Clinical Pharmacology, Aberdeen Royal Infirmary, Scotland, U.K.
Dr E. Rogers	M.Ch.	Medicine	Consultant Urologist, University College Hospital, Galway
Dr F. Cotter	Ph.D.	Medicine	Centre for Haematology, Barts & the London School of Medicine and Dentistry, U.K.
Dr H. Lambkin	Ph.D.	Medicine	School of Biological Sciences, D.I.T.
Dr J. Cryan	Ph.D.	Medicine	School of Pharmacy, U.C.C.
Dr K. McDonald	M.Ch.	Medicine	Dept. of Cardiology, St. Vincent's Hospital, Dublin
Dr L. Kent	M.D.	Medicine	Bute Medical School, University of St. Andrew's, Scotland, U.K.
Dr M. Catherwood	Ph.D.	Medicine	Haematology Department, Belfast City Hospital, Northern Ireland, U.K.
Dr M. Conway	Ph.D.	Medicine	Dept. of Cardiology, St. Luke's Hospital, Dublin
Dr M. Dempster	M.Sc.	Medicine	School of Psychology, Queen's University Belfast, Northern Ireland, U.K.
Dr M. Donnelly	Ph.D.	Medicine	Epidemiology Research Group, Queen's University Belfast, Northern Ireland, U.K.
Dr M. Molloy	M.Sc.	Medicine	Dept. of Medicine and Rheumatology, Cork University Hospital
Dr P. Klenerman	Ph.D.	Medicine	Peter Medawar Building for Pathogen Research, University of Oxford, U.K.

Dr S. Gilloway	M.Sc.	Medicine	Dept. of Psychology, N.U.I. Maynooth, Co. Kildare
Dr S. Heales	Ph.D.	Medicine	Neurometabolic Unit, National Hospital and Institute of Neurology (UCL), London, U.K.
Dr S. McLeer	M.Sc.	Medicine	Cancer Centre, Belfast City Hospital, Northern Ireland, U.K.
Dr S. O'Keefe	Ph.D.	Medicine	Dept. of Geriatric Medicine, N.U.I., Co. Galway
Dr T. Barrett	M.D.	Medicine	Dept. of Endocrinology, Birmingham Children's Hospital, U.K.
Dr T. Crotty	Ph.D.	Medicine	Histopathology Department, St. Vincent's Hospital, Dublin
Mr. K. Sweeney	M.D.	Medicine	Dept. of Surgery, University College Hospital, Galway
Mr. P. Keane	M.Ch.	Medicine	Dept. of Urology, Belfast City Hospital, Northern Ireland, U.K.
Prof. E. Kay	Ph.D.	Medicine	Dept. of Pathology, Beaumont Hospital, Dublin
Prof. G. Everton Butler	M.D.	Medicine	Dept. of Paediatrics, University of Reading, U.K.
Prof. G. Johnston	Ph.D.	Medicine	Dept. of Therapeutics and Pharmacology, Queen's University Belfast, Northern Ireland, U.K.
Prof. I. Hann	Ph.D.	Medicine	Dept. of Haematology and Oncology, University College London, U.K.
Prof. I. Young	Ph.D.	Medicine	Nutrition and Metabolism Research Group, Queen's University Belfast, Northern Ireland, U.K.
Prof. J. Anderson	M.D.	Medicine	Centre for the Study of Sexual Health and HIV, Homerton University Hospital, London, U.K.
Prof. J. Leff	M.D.	Medicine	Institute of Psychiatry, King's College London, U.K.
Prof. J. Moore	M.Sc.	Medicine	Dept. of Microbiology, Belfast City Hospital, Northern Ireland, U.K.
Prof. J. Morrison	M.D.	Medicine	Dept. of Obstetrics and Gynaecology, N.U.I., Co. Galway
Prof. M. Cafferkey	M.Sc.	Medicine	Clinical Microbiologist, Rotunda Hospital, Dublin
Prof. M. McMullin	Ph.D.	Medicine	Dept. of Haematology, Belfast City Hospital, Northern Ireland, U.K.
Prof. P. Asherson	Ph.D.	Medicine	MRC Social Genetic Development Psychiatry, Institute of Psychiatry, King's College London, U.K.
Prof. P. Grace	M.D.	Medicine	UL Graduate Medical School, University of Limerick
Prof. P. Kennedy	Ph.D.	Medicine	Dept. of Clinical Psychology, University of Oxford, U.K.
Prof. P. Moynagh	Ph.D.	Medicine	Dept. of Biology, N.U.I. Maynooth, Co. Kildare
Prof. R. Straub	Ph.D.	Medicine	Dept. of Internal Medicine, University Hospital Regensburg, Germany
Prof. S. Mercer	Ph.D.	Medicine	General Practice and Primary Care, University of Glasgow, Scotland, U.K.
Prof. T. MacDonald	Ph.D.	Medicine	Clinical Pharmacology and Therapeutics, Ninewells Hospital and Medical School, Dundee, Scotland, U.K.
Prof. T. Owens	Ph.D.	Medicine	Medical Biotechnology Centre, University of Southern Denmark, Odense, Denmark
Prof. T. Walsh	Ph.D.	Medicine	School of Medicine, Cardiff University, Wales, U.K.
Prof. W. Rosenberg	M.D.	Medicine	Institute of Hepatology, Royal Free and University College Medical School, University of London, U.K.
Dr D. Evans	Ph.D.	Nursing & Midwifery	Applied Health Policy Research, University of the West of England, Bristol, U.K.
Dr D. Fitzsimmons	Ph.D.	Nursing & Midwifery	School of Health Science, University of Wales, Swansea, U.K.
Dr J. Coad	Ph.D.	Nursing & Midwifery	Centre for Child and Adolescent Health, University of the West of England, Bristol, U.K.
Dr L. O'Connor	M.Sc.	Nursing & Midwifery	Mater Misericordiae University Hospital, Dublin
Prof. K. Cox	Ph.D.	Nursing & Midwifery	Faculty of Medicine and Health Sciences, University of Nottingham, U.K.
Prof. K. Murphy	Ph.D.	Nursing & Midwifery	School of Nursing and Midwifery, N.U.I., Co. Galway
Prof. L. Shields	Ph.D.	Nursing & Midwifery	Faculty of Health and Social Care, University of Hull, U.K.
Prof. P. Callery	Ph.D.	Nursing & Midwifery	School of Nursing, Midwifery and Social Work, University of Manchester, U.K.

Dr A. Crean	Ph.D.	Pharmacy and Pharmaceutical Sciences	School of Pharmacy, U.C.C.
Dr B. Forbes	M.Sc.	Pharmacy and Pharmaceutical Sciences	Pharmacy Department, King's College London, U.K.
Dr K. Doyle	Ph.D.	Pharmacy and Pharmaceutical Sciences	Dept. of Physiology, N.U.I., Co. Galway
Dr M. Threadgill	Ph.D.	Pharmacy and Pharmaceutical Sciences	Dept. of Pharmacy and Pharmacology, University of Bath, U.K.
Dr P. James	Ph.D.	Pharmacy and Pharmaceutical Sciences	School of Chemical Sciences, D.C.U.
Dr Z. Ramtoola	Ph.D.	Pharmacy and Pharmaceutical Sciences	The Royal College of Surgeons, Dublin
Prof. C. Anderson	Ph.D.	Pharmacy and Pharmaceutical Sciences	School of Social Pharmacy, University of Nottingham, U.K.
Prof. M. Decker	Ph.D.	Pharmacy and Pharmaceutical Sciences	School of Pharmacy, Queen's University Belfast, Northern Ireland, U.K.
Prof. M. Ennis	Ph.D.	Pharmacy and Pharmaceutical Sciences	Centre for Infection and Immunity, Queen's University Belfast, Northern Ireland, U.K.
Prof. M. Newton	M.Sc.	Pharmacy and Pharmaceutical Sciences	School of Pharmacy, University of London, U.K.
Faculty of Engineering, Mathematics and Science			
Dr A. MacDonald	Ph.D.	Biochemistry and Immunology	Institute of Immunology and Infection Research, University of Edinburgh, Scotland, U.K.
Dr D. Anthony	Ph.D.	Biochemistry and Immunology	Dept. of Pharmacology, University of Oxford, U.K.
Dr N. Williams	Ph.D.	Biochemistry and Immunology	Dept. of Cellular and Molecular Medicine, University of Bristol, U.K.
Dr R. Hubbard	Ph.D.	Biochemistry and Immunology	Structural Biology Lab, University of York, U.K.
Prof. C. Karp	Ph.D.	Biochemistry and Immunology	Director of Molecular Immunology, Cincinnati Children's Hospital Medical Centre, U.S.A.
Prof. Dr. M. Engstler	Ph.D.	Biochemistry and Immunology	Institut für Mikrobiologie und Genetik, Technische Universität Darmstadt, Germany
Prof. M. Gore	Ph.D.	Biochemistry and Immunology	Dept. of Biochemistry and Molecular Biology, University of Southampton, U.K.
Prof. M. Unzeta	Ph.D.	Biochemistry and Immunology	Dept. of Bioquímica i Biologia Molecular, Universitat Autònoma de Barcelona, Spain
Prof. M. Valoti	Ph.D.	Biochemistry and Immunology	Dept. of Neurosciences, University of Siena, Italy
Prof. P. Moynagh	Ph.D.	Biochemistry and Immunology	Institute of Immunology, N.U.I. Maynooth, Co. Kildare
Prof. P. Moynagh	M.Sc.	Biochemistry and Immunology	Dept. of Biology, N.U.I., Co. Galway
Prof. T. Kazic	Ph.D.	Biochemistry and Immunology	Dept. of Computer Science, University of Missouri, U.S.A.
Dr C. McCoy	Ph.D.	Chemistry	School of Pharmacy, Queen's University Belfast, Northern Ireland, U.K.
Dr D. Rooney	Ph.D.	Chemistry	Organometallic Chemistry, N.U.I. Maynooth, Co. Kildare
Dr M. Migaud	Ph.D.	Chemistry	School of Chemistry and Chemical Engineering, Queen's University Belfast, Northern Ireland, U.K.
Dr M. Porter	Ph.D.	Chemistry	Organic Chemistry and Chemical Biology, University College London, U.K.
Dr R. Berger	Ph.D.	Chemistry	MPI for Polymer Research, Mainz, Germany
Dr R. Boyle	Ph.D.	Chemistry	Dept. of Chemistry, University of Hull, U.K.
Dr S. Bull	Ph.D.	Chemistry	Dept. of Chemistry, University of Bath, U.K.
Prof. D. O'Shea	Ph.D.	Chemistry	School of Chemistry and Chemical Biology, U.C.D.
Prof. Dr K. Wieghardt	Ph.D.	Chemistry	MPI für Bioanorganische Chemie, Mulheim an der Ruhr, Germany
Prof. F. Aldabbagh	Ph.D.	Chemistry	Dept. of Chemistry, N.U.I., Co. Galway
Prof. G. Beddard	Ph.D.	Chemistry	Dept. of Chemistry, University of Leeds, U.K.
Prof. H. Vos	M.Sc.	Chemistry	Dept. of Chemical Science, D.C.U.
Prof. J. Liz-Marzan	Ph.D.	Chemistry	Departamento de Química Física, Universidad de Vigo, Spain
Prof. K. Hale	Ph.D.	Chemistry	School of Chemistry and Chemical Engineering, Queen's University Belfast, Northern Ireland, U.K.

Prof. M. Morris	Ph.D.	Chemistry	College of Science, Engineering and Food Sciences, U.C.C.
Prof. M. Pemble	Ph.D.	Chemistry	Tyndall National Institute, U.C.C.
Prof. P. Moriarty	Ph.D.	Chemistry	School of Physics and Astronomy, University of Nottingham, U.K.
Dr A. Montreso	Ph.D.	Computer Science and Statistics	Dipartimento di Ingegneria e Scienza Dell' Informazione, University of Trento, Italy
Dr A. Shearer	M.Sc.	Computer Science and Statistics	School of Physics, N.U.I., Co. Galway
Dr A. Trousov	M.Sc.	Computer Science and Statistics	Dublin Software Lab, IBM Dublin Centre for Advanced Studies
Dr F. Sebastiani	Ph.D.	Computer Science and Statistics	Istituto di Scienza e Tecnologia, Pisa, Italy
Dr G. Saldanha	M.Sc.	Computer Science and Statistics	Centre for English Language Studies, University of Birmingham, U.K.
Dr H. Melvin	M.Sc.	Computer Science and Statistics	Dept. of Information Technology, N.U.I., Co. Galway
Dr J. Carthy	Ph.D.	Computer Science and Statistics	School of Computer Science and Informatics, U.C.D.
Dr L. McGinty	Ph.D.	Computer Science and Statistics	Dept. of Computer Science, U.C.D.
Dr W. Karl	Ph.D.	Computer Science and Statistics	Faculty of Informatics, Universität Karlsruhe, Germany
Prof. A. Rowstron	Ph.D.	Computer Science and Statistics	Microsoft Research, Cambridge, U.K.
Prof. B. Wong	Ph.D.	Computer Science and Statistics	School of Computing Science, Middlesex University, U.K.
Prof. C. Clarke	Ph.D.	Computer Science and Statistics	Dept. of Electronic and Electrical Engineering, University of Bath, U.K.
Prof. E. Andres	M.Sc.	Computer Science and Statistics	Lehrstuhl für Multimedia-Konzepte und ihre Anwendungen, Universität Augsburg, Germany
Prof. G. Parr	Ph.D.	Computer Science and Statistics	School of Computing and Information Engineering, University of Ulster at Coleraine, Northern Ireland, U.K.
Prof. J. Bacon	M.Sc.	Computer Science and Statistics	Computer Laboratory, University of Cambridge, U.K.
Prof. J. Savoy	Ph.D.	Computer Science and Statistics	Institut d'Informatique, Neuchâtel, Switzerland
Prof. L. Birkedal	Ph.D.	Computer Science and Statistics	IT University of Copenhagen, Denmark
Prof. M. Petre	Ph.D.	Computer Science and Statistics	Centre for Research in Computing, The Open University, Milton Keynes, U.K.
Prof. N. Agoulmine	Ph.D.	Computer Science and Statistics	Computer Science and Engineering Sciences, University of Evry, France
Prof. N. Davis	Ph.D.	Computer Science and Statistics	Computing Department, Lancaster University, U.K.
Prof. N. Friel	Ph.D.	Computer Science and Statistics	School of Mathematical Sciences, U.C.D.
Prof. P. Brusilovsky	Ph.D.	Computer Science and Statistics	Dept. of Information, Science and Telecommunications, University of Pittsburgh, U.S.A.
Prof. P. Challenor	Ph.D.	Computer Science and Statistics	National Oceanographic Centre, Southampton, U.K.
Prof. S. Marsh	Ph.D.	Computer Science and Statistics	Institute for Information Technology, National Research Council Canada, Ottawa, Canada
Prof. S. McClean	Ph.D.	Computer Science and Statistics	School of Computing and Information Engineering, University of Ulster, Northern Ireland, U.K.
Prof. S. Scholz	Ph.D.	Computer Science and Statistics	School of Computer Science, University of Hertfordshire, U.K.
Prof. W. McCarty	M.Sc.	Computer Science and Statistics	Centre for Computing in the Humanities, King's College London, U.K.
Dr A. Gonzalez	M.Sc.	Engineering	School of Architecture, Landscape and Civil Engineering, U.C.D.
Dr A. Harte	M.Sc.	Engineering	Dept. of Civil Engineering, N.U.I., Co. Galway
Dr C. Brennan	Ph.D.	Engineering	School of Electronic Engineering, D.C.U.
Dr C. Stevenson	Ph.D.	Engineering	Dept. of Psychology, University of Limerick
Dr D. O'Cinneide	M.A.I.	Engineering	Dept. of Civil Engineering, U.C.C.

Dr G. Van Wirdum	Ph.D.	Engineering	National Geological Survey, Utrecht, The Netherlands
Dr H. Esmonde	M.Sc.	Engineering	School of Mechanical and Manufacturing Engineering, D.C.U.
Dr J. Kuiper	Ph.D.	Engineering	Unit for Joint Reconstruction, RJA Orthopaedic Hospital, Oswestry, U.K.
Dr J. Punch	M.Sc.	Engineering	Dept. of Mechanical and Aeronautical Engineering, University of Limerick
Dr M. O'Rourke	M.Sc.	Engineering	College of Engineering, Mathematical and Physical Sciences, U.C.D.
Dr P. Bamforth	Ph.D.	Engineering	London, U.K.
Dr P. McGarry	M.Sc.	Engineering	Dept. of Mechanical and Biomedical Engineering, N.U.I., Co. Galway
Dr P. Phealan	M.Sc.	Engineering	Dept. of Manufacturing and Operations Engineering, University of Limerick
Dr P. Young	M.Sc.	Engineering	School of Mechanical and Manufacturing Engineering, D.C.U.
Dr P. Young	M.A.I.	Engineering	School of Mechanical and Manufacturing Engineering, D.C.U.
Dr R. Cameron	Ph.D.	Engineering	Dept. of Materials Science and Metallurgy, University of Cambridge, U.K.
Dr S. Cartmell	Ph.D.	Engineering	Institute of Science and Technology in Medicine, University of Keele, Staffordshire, U.K.
Dr S. Shefelbine	Ph.D.	Engineering	Dept. of Bioengineering, Imperial College London, U.K.
Prof. C. Buckley	Ph.D.	Engineering	Pollution Research Group, University of Kwazulu-Natal, Durban, South Africa
Prof. D. Carter	Sc.D.	Engineering	Dept. of Mechanical Engineering and Bioengineering, Stanford University, California, U.S.A.
Prof. G. Bertocci	Ph.D.	Engineering	JB Speed School of Engineering, University of Louisville, U.S.A.
Prof. J. Evans	Ph.D.	Engineering	Dept. of Electrical Engineering and Computer Science, University of Kansas, U.S.A.
Prof. J. Orr	Ph.D.	Engineering	Dept. of Mechanical Engineering, Queen's University Belfast, Northern Ireland, U.K.
Prof. M. Carey	Ph.D.	Engineering	School of Management and Economics, Queen's University Belfast, Northern Ireland, U.K.
Prof. M. Chryssanthopoulos	Ph.D.	Engineering	Faculty of Engineering and Physical Sciences, University of Surrey, U.K.
Prof. M. Osipov	Ph.D.	Engineering	Dept. of Applied Mathematics, University of Strathclyde, Glasgow, Scotland, U.K.
Prof. O. Lewis	M.Sc.	Engineering	School of Architecture, Landscape and Civil Engineering, U.C.D.
Prof. Y. Gervais	Ph.D.	Engineering	Laboratoire d'Etudes Aérodynamiques, University of Poitiers, France
Prof. Z. Cui	Sc.D.	Engineering	Oxford Centre for Tissue Engineering and Bioprocessing, Oxford University, U.K.
Dr A. Latorre	Ph.D.	Genetics and Microbiology	Instituto Cavanilles de Biodiversidad y Biología Evolutiva, Universidad de València, Spain
Dr D. Clarke	Ph.D.	Genetics and Microbiology	Dept. of Microbiology, U.C.C.
Dr J. Lamb	Ph.D.	Genetics and Microbiology	Centre for the Integrated Genomic Medical Research, University of Manchester, U.K.
Dr M. Van der Woude	Ph.D.	Genetics and Microbiology	Dept. of Biology, University of York, U.K.
Dr N. Holden	Ph.D.	Genetics and Microbiology	Scottish Crop Research Institute, Dundee, Scotland, U.K.
Dr R. Wingate	Ph.D.	Genetics and Microbiology	MRC Centre for Developmental Neurobiology, King's College London, U.K.
Dr W. Ziebuhr	Ph.D.	Genetics and Microbiology	School of Biomedical Sciences, Queen's University Belfast, Northern Ireland, U.K.
Prof. A. Simarro	Ph.D.	Genetics and Microbiology	Institut Cavanilles de Biodiversitat i Biologia Evolutiva, Universitat de València, Spain
Prof. D. Price	Ph.D.	Genetics and Microbiology	Developmental Biology Laboratory, University of Edinburgh, Scotland, U.K.
Prof. J. Flock	Ph.D.	Genetics and Microbiology	Microbiology and Tumourbiology Center, Karolinska Institutet, Stockholm, Sweden

Prof. J. Martinou	Ph.D.	Genetics and Microbiology	Dept. of Cell Biology, University of Geneva, Switzerland
Prof. J. Medema	Ph.D.	Genetics and Microbiology	Centre for Experimental Molecular Medicine, Amsterdam, The Netherlands
Prof. L. Bjorck	Ph.D.	Genetics and Microbiology	Dept. of Clinical Sciences, Lund University, Sweden
Prof. Sir J. Arbuthnot	Ph.D.	Genetics and Microbiology	Greater Glasgow National Health Service Health Board, Scotland, U.K.
Prof. Y. Van De Peer	Ph.D.	Genetics and Microbiology	Bioinformatics and Evolutionary Genomics, Ghent University, Belgium
Dr C. Allton	Ph.D.	Mathematics	Dept. of Physics, University of Wales, U.K.
Dr S. Rickard	M.Sc.	Mathematics	Complex and Adaptive Systems Laboratory, U.C.D.
Dr S. White	M.Sc.	Mathematics	Dept. of Mathematics, University of Glasgow, Scotland, U.K.
Prof. Dr. F. Otto	M.Sc.	Mathematics	Fachbereich Elektrotechnik/Informatik, Universität Kassel, Germany
Prof. R. Horgan	Ph.D.	Mathematics	Dept. of Applied Mathematics and Theoretical Physics, University of Cambridge, U.K.
Prof. V. Muller	Ph.D.	Mathematics	Institute of Mathematics, Czech Academy of Sciences, Prague, Czech Republic
Dr C. Wilcock	Ph.D.	Natural Sciences	Dept. of Plant and Soil Science, University of Aberdeen, Scotland, U.K.
Dr D. Simpson	Ph.D.	Natural Sciences	Royal Botanic Garden, Surrey, U.K.
Dr M. Dobson	Ph.D.	Natural Sciences	The Freshwater Biological Association, Cumbria, U.K.
Dr R. Flynn	M.Sc.	Natural Sciences	School of Planning, Architecture and Civil Engineering, Queen's University Belfast, Northern Ireland, U.K.
Dr R. McDonald	Ph.D.	Natural Sciences	Wildlife Disease Ecology, Central Science Laboratory, Gloucestershire, U.K.
Dr S. Robinson	Ph.D.	Natural Sciences	School of Human and Environmental Science, University of Reading, U.K.
Dr S. Royle	Ph.D.	Natural Sciences	School of Geography, Queen's University Belfast, Northern Ireland, U.K.
Prof. B. Rippey	Ph.D.	Natural Sciences	School of Environmental Sciences, University of Ulster, Coleraine, Northern Ireland, U.K.
Prof. B. Upton	Ph.D.	Natural Sciences	School of Geosciences, University of Edinburgh, Scotland, U.K.
Prof. C. Griffin	Ph.D.	Natural Sciences	Biology Department, N.U.I. Maynooth, Co. Kildare
Prof. E. Swyngedouw	Ph.D.	Natural Sciences	Dept. of Geography, University of Manchester, U.K.
Prof. H. Balslev	Ph.D.	Natural Sciences	Dept. of Biological Sciences, University of Aarhus, Denmark
Prof. J. Brehnke	Ph.D.	Natural Sciences	School of Biology, University of Nottingham, U.K.
Prof. J. Gamble	Ph.D.	Natural Sciences	Dept. of Geology, U.C.C.
Prof. J. Gunn	Ph.D.	Natural Sciences	Dept. of Geography, University of Huddersfield, U.K.
Prof. J. Ollerton	Ph.D.	Natural Sciences	School of Applied Sciences, University of Northampton, U.K.
Prof. M. Boyle	Ph.D.	Natural Sciences	Dept. of Geography, N.U.I. Maynooth, Co. Kildare
Prof. M. Gustafsson	Ph.D.	Natural Sciences	Dept. of Biological Sciences, University of Aarhus, Denmark
Prof. P. Jones	Ph.D.	Natural Sciences	Dept. of Zoology, Ecology and Plant Science, U.C.C.
Prof. R. Brown	Ph.D.	Natural Sciences	Dept. of Geographical and Earth Sciences, University of Glasgow, Scotland, U.K.
Prof. R. Wicander	Ph.D.	Natural Sciences	Dept. of Geology, Central Michigan University, U.S.A.
Prof. S. Metcalfe	Ph.D.	Natural Sciences	School of Geography, University of Nottingham, U.K.
Prof. W. Kunin	Ph.D.	Natural Sciences	Earth and Biosphere Institute, University of Leeds, U.K.
Dr A. Dalton	Ph.D.	Physics	Dept. of Physics, University of Surrey, U.K.
Dr A. Penicaud	Ph.D.	Physics	Centre de Recherche Paul Pascal, Université de Bordeaux, France
Dr E. McGlynn	M.Sc.	Physics	School of Physical Sciences, D.C.U.

Dr J. Mosnier	M.Sc.	Physics	School of Physics, D.C.U.
Dr M. Castell	Ph.D.	Physics	Dept. of Materials, University of Oxford, U.K.
Dr R. Bouman	M.Sc.	Physics	School of Mathematics and Physics, Queens University Belfast, Northern Ireland, U.K.
Dr V. Barron	M.Sc.	Physics	REMEDI, National Centre for Biomedical Engineering Sciences, N.U.I., Co. Galway
Prof. A. Fox	Ph.D.	Physics	Dept. of Physics and Astronomy, University of Sheffield, U.K.
Prof. A. Ray	Ph.D.	Physics	Dept. of Materials, Queen Mary University of London, U.K.
Prof. A. Stesmans	Ph.D.	Physics	Dept. of Physics, University of Leuven, Belgium
Prof. Dr N. Esser	Ph.D.	Physics	Institute for Analytical Sciences, Berlin, Germany
Prof. G. Bauer	Ph.D.	Physics	Kavli Institute of Nanoscience, TU Delft, The Netherlands
Prof. H. Raebiger	Ph.D.	Physics	Dept. of Physics, Yokohama National University, Japan
Prof. J. Attfield	Ph.D.	Physics	School of Chemistry, University of Edinburgh, Scotland, U.K.
Prof. J. Charlier	Ph.D.	Physics	Unitè de Physico-Chimie et de Physique des Matériaux, Université Catholique de Louvain, Belgium
Prof. J. Sheridan	M.Sc.	Physics	School of Electrical, Electronic and Mechanical Engineering, U.C.D.
Prof. K. Kaspi	Ph.D.	Physics	Laboratory of Computational Engineering, Helsinki University of Technology, Finland
Prof. S. Blugel	Ph.D.	Physics	Research Centre Julich, Institute of Solid State Research, Germany

Appendix 6: Taught Course External Examiners by Faculty 2008-2009

Faculty of Arts Humanities and Social Sciences		
<i>Course Coordinator/Director</i>	<i>External Examiners</i>	<i>From To</i>
Master in Business Administration (M.B.A) Mr. Vincent Dooley	Professor Bart Rosenbloom, Drexel University, PA, USA Professor Thomas Lawton, London, UK	2008-2011 2007-2010
Doctorate in Clinical Psychology (D. Clin. Psych) Dr. Kevin Tierney	Dr. Ian Gray, Bay Primary Care, NHS Trust, UK Dr. Andrew Thompson, University of Sheffield, Sheffield, UK	2007-2010 2008-2011
Professional Doctorate in Education (D. Ed) Dr. Andrew Loxley	Professor Pat Sikes, University of Sheffield, Sheffield, UK	2007-2010
Doctorate in Political Science (M. Phil. / Ph. D) Dr. Gail Conroy	Professor Van de Eijk , University of Amsterdam, Amsterdam, The Netherlands	2007-2010
Master in Education (M.Ed. / P. Grad. Dip. Educational Studies) Dr. Aidan Seery / Mr Keith Johnston	Professor Andrew Hobson, University of Nottingham, Nottingham, UK	2007-2010
	Mr Gareth Parry, University of Ulster, Coleraine, N. Ireland	2007-2010
	Ms Margaret Daly, University College Dublin	2007-2010
	Dr. Gerry Gaden, University College Dublin	2006-2009
Master in Social Work (M.S.W) Ms Maeve Foreman	Professor Mary Collins, Boston University, Boston, USA	2005-2009
Master in Laws (LL.M) Dr. Neville Cox	Professor Steven Hedley, University College Cork	2008-2011
	Professor Damian Chalmers, London School of Economics, London, UK	2007-2010
	Professor Conor Gearty, London School of Economics, London, UK	2006-2009
	Professor Sally Wheeler, Queens University Belfast, N. Ireland	2006-2009
M.Phil./ P. Grad. Dip. in Anglo Irish Literature Professor Nicholas Grene	Professor Chris Morash, National University of Ireland, Maynooth	2008-2011
M.Phil./ P. Grad. Dip. in Applied Linguistics Dr. Jeffrey Kallen	Professor Carmen Munoz Lahoz, Universitat de Barcelona, Spain	2006-2009
	Professor Maggie Tallerman University of Newcastle, Newcastle, UK	2008-2011
M.Phil. Classics Dr. Claire Taylor	Professor Mark Humphries, University of Swansea, Swansea, UK	2008-2011
M.Phil. Comparative European Politics Dr. Robert Thompson	Dr. Michael Bruter, London School of Economics & Political Science, London, UK	2008-2011
M.Phil. in Comparative Literature Dr. Catriona Leahy	Dr. Brigitte Le Juez, Dublin City University, Dublin	2006-2009
M.Phil. in Creative Writing Mr Gerald Dawe	Professor Carol Rumens, University of Wales, Bangor, UK	2006-2009
M.Phil. in Early Irish Professor Damien McManus	Dr. Uaitear Mac Gearailt, Dublin City University, Dublin	2008-2011
M.Sc. in Economic Policy Studies Professor John O'Hagan	Professor Peter Jackson, University of Leicester, Leicester, UK	2008-2011
M.Phil./P. Grad. Dip. in English Language Teaching Dr. Jeffrey Kallen	Professor Christopher Kennedy, University of Birmingham, Birmingham, UK	2007-2010
M.Phil. in Ethnic and Racial Studies Dr. Ronit Lentini	Dr. Breda Gray, University of Limerick, Limerick	2007-2010
M.Phil. (Ecum.)/P. Grad. Dip. in Ecumenical Studies Dr. Andrew Pierce	Professor Paul Murray, University of Durham, Durham, UK	2008-2011
	Dr. David Cheatham, University of Birmingham, Birmingham, UK	2006-2009

M.Phil. in Film Theory and History Dr. Paula Quigley	Professor Martin McLoone, University of Ulster, Coleraine, N. Ireland	2007-2010
M.Phil. / P. Grad. Dip. in Gender & Women's Studies Dr. Maryann Valiulis	Professor Heidi Safia Mirza, University of London, London, UK	2008-2011
M.Phil. / P. Grad. Dip. in German Literature with Language Pedagogy Dr. Gilbert Carr	Professor Andrew Barker, Division of European Languages & Cultures, Edinburgh, UK	2007-2010
M.Phil. in Irish Art History Dr. Yvonne Scott	Dr. Christa-Maria Lerm Hayes, University of Ulster, Belfast, N. Ireland	2007-2010
M.Phil. / P. Grad. Dip. in Linguistics Dr. Jeffrey Kallen	Professor Maggie Tallerman, University of Newcastle Upon Tyne, Newcastle, UK	2008-2011
M.Phil. in Literary Translation Dr. Susana Bayó Belenguier	Professor George Talbot, University of Hull, Hull, UK	2007-2010
M.Phil. in Literatures of the Americas Dr. Philip Coleman	Professor Susan Castillo, Kings College, London, UK	2007-2010
M.Phil. in Medieval History Dr. Katherine Simms	Dr. Julia Barrow, University Park, Nottingham, UK	2008-2011
M.Phil. in Medieval Language, Literature and Culture Professor Eilean Ni Chuilleanain	Dr. Helen Phillips, University of Cardiff, Cardiff, UK	2007-2010
M.Phil. / P. Grad. Dip. in Modern Irish History Professor Eunan O'Halpin	Dr. Margaret O'Callaghan, Queens University, Belfast, N. Ireland	2008-2011
M.Phil. (Peace Studies)/P. Grad. Dip. in Peace Studies Dr. Ian Atack	Professor Tom Lodge., University of Limerick, Limerick Professor Beverly Milton Edwards., Queens University, Belfast, N. Ireland Professor Tony McGrew, University of Southampton, Southampton, UK	2008-2011 2007-2010 2006-2009
M.Phil. in Popular Literature Dr. Darryl Jones	Professor Keith Williams, University of Dundee, Dundee, UK	2008-2011
M.Phil. / P. Grad. Dip. in Psychoanalytic Studies Dr. Ross Skelton	Professor Karl Figlio, University of Essex, Essex, UK	2006-2009
M.Phil. / P. Grad. Dip. in Reconciliation Studies Mr David Tombs	Dr. Claire Mitchell, Queens University, Belfast, N. Ireland Dr. Gerard Mannion, Katholieke Universitat, Leuven, Belgium	2008-2011 2006-2009
M.Phil. / P. Grad. Dip. in Reformation and Enlightenment Studies Dr. Helga Robinson Hammerstein	Dr. Jane Dawson, University of Edinburgh, Edinburgh, UK	2006-2009
M.Phil. / P. Grad. Dip. in Speech and Language Processing Dr. Jeffrey Kallen	Professor William Hardcastle, Queen Margaret University, Edinburgh, UK	2006-2009
M.Phil. in Theatre and Performance Dr. Melissa Sihra	Dr. Catherine Leeney, University College Dublin	2005-2009
M.Sc. in Applied Psychology Dr. Tim Trimble	Dr. Mark Shelvin, University of Ulster, Magee Campus, Londonderry, N. Ireland	2006-2009
M.Sc. in Psychology (Applied Behaviour Analysis) Dr. Maeve Bracken	Dr. Veronica Cullinan, Mary Immaculate College, University of Limerick, Limerick	2008-2011
M.Sc. in Applied Social Research Dr. Evelyn Mahon	Professor Colin Mills, Nuffield College, Oxford, UK	2007-2010
M.Sc. in Clinical Speech and Language Studies Dr. Margaret Walshe, Dr. Margaret Leahy	Professor Barbara Dodd, Royal Brisbane & Womens Hospital, Queensland, Australia	2006-2009
M.Sc. in Clinical Supervision Ms Mary Creaner	Dr. Maja O'Brien, Oxford, UK	2008-2011
M.Sc. in Counselling Psychology Dr. Ladislav Timulak	Professor John McLeod, University of Abertay, Dundee, UK	2006-2009
M.Sc. in Drug & Alcohol Policy Dr. Shane Butler	Professor Karen Duke, Middlesex University, Middlesex, UK	2008-2011
M.Sc. / P. Grad. Dip. in Economics Dr. Carol Newman	Professor Candice Prendergast, University of Chicago, Chicago, USA.	2007-2010

M.Sc. (Mgmt) Business Administration Mr. Vincent Dooley	Professor Bart Rosenbloom, Drexel University, Philadelphia, USA	2008-2011
M.Sc. Economic Policy Studies Professor John O'Hagan	Professor Peter Jackson, University of Leicester, Leicester, UK	2008-2011
M.Sc. in Finance Professor Brian Lucey	Professor Angela Black, University of Aberdeen, Aberdeen, UK	2008-2011
M.Sc.(Mgmt) International Business Programme Dr. John Quilliam	Professor Hugh O'Neill, University of North Carolina at Chapel Hill, North Carolina, USA	2007-2010
M.Sc. (Mgmt) Management Practice Dr. Anthony Drumgoole	Professor Steve Armstrong, University of Hull, Hull, UK	2007-2010
M.Sc.(Mgmt) Organisational Behaviour Mr Andrew McLaughlin	Professor Patrick Flood, Dublin City University, Dublin.	2007-2010
M.Sc.(Mgmt) Strategic Management Professor John Murray	Professor Cliff Bowman, Cranfield School of Management, Bedfordshire, UK	2007-2010
P. Grad. Dip. / M.Sc. in Child Protection and Welfare	Professor Dorothy Scott, University of South Australia, Australia	2007-2010
P. Grad. Dip. / M.Phil. in Music and Media Technologies Dr. Fionnuala Conway	Dr. Eric Lyon, Queens University, Belfast, N. Ireland	2008-2011
P. Grad. Dip. in Applied Behaviour Analysis Dr. Rita Honan	Dr. Geraldine Leader, National University of Ireland, Galway	2007-2010
P. Grad. Dip. in Clinical Speech and Language Studies (Dysphasia) Dr. Margaret Walshe, Ms Margaret Leahy	Dr. Nathaniel Rommel, Katholieke Universitat, Leuven, Belgium	2008-2011
P. Grad. Dip. in Clinical Supervision Ms Mary Creaner	Dr. Mary Ryan, National University Of Ireland, Maynooth, Co. Kildare	2007-2010
P. Grad. Dip. in Conflict and Dispute Resolution Studies Ms Paulyn Marrinan Quinn	Professor Andrew Williams, University of St. Andrews, Fife, UK	2008-2011
P. Grad. Dip. In Continuing Professional Development Dr. Andrew Loxley	Dr. Angi Malderez, University of Leeds, Leeds, UK	2007-2010
P. Grad. Dip. in Education Dr. David Limond	Professor Gerry McNamara, Dublin City University, Dublin	2007-2010
P. Grad. Dip. in Management Dr. Robert Galavan	Professor Cliff Bowman, Cranfield University, Bedfordshire, UK	2007-2010
Higher Diploma in Education (Primary Teaching) Mr Pdraig De Bhal	Professor Donald Christie, University of Strathclyde, Glasgow, UK	2006-2009
Higher Diploma in Psychology Dr. Jean Quigley	Professor Julien Leslie, University of Ulster, Coleraine, N. Ireland	2006-2009
Faculty of Engineering, Mathematics and Science		
M.Sc. /P. Grad. Dip. Biodiversity and Conservation Dr. Stephen Waldren	Professor Robert Marrs, University of Liverpool, Liverpool, UK	2007-2010
M.Sc. / P. Grad. Dip. in Bioengineering Dr. Ciaran Simms	Professor Robert Hill, Imperial College, London, UK	2006-2009
M.Sc. / P. Grad. Dip. in Civil Engineering Dr. Brendan O'Kelly	Professor Thomas Curtis, Newcastle Upon Tyne University, Newcastle, UK	2008-2011
M.Sc. /P. Grad. Dip. in Computer Science(Interactive Entertainment Technology) Dr. Steven Collins	Professor Susan Slusallek, Saarland University, Saarbrucken, Germany	2007-2010
M.Sc. /P. Grad. Dip. in Computer Science (Mobile & Ubiquitous) Dr. Mads. Haahr	Dr. Albrecht Schmidt, Munchen, Germany	2006-2009
M.Sc. / P. Grad. Dip. in Computer Science (Network and Distributed Systems) Dr. Siobhan Clarke	Professor Jeff Magee, Imperial College, London, UK	2007-2010
M.Sc. / P. Grad. Dip. in Environmental Sciences Dr. Robin Edwards	Professor Stephen Hawkins, Marine Biological Assoc. of the United Kingdom, Plymouth, UK	2007-2010
M.Sc. / P. Grad. Dip. in High Performance Computing Dr. Michael Peardon	Dr. David Henty, University of Edinburgh, Edinburgh, UK	2008-2011

M.Sc. / P. Grad. Dip. Management of Information Systems Dr. Allan Mullally & Dr. Frank Bannister	Professor Les Worrall, Coventry University, Coventry, UK	2008-2011
M.Sc. in Mechanical Engineering (Erasmus Mundus) Dr. Craig Meskell	Dr. Laurent Dala, University of West England, Bristol, UK	2008-2011
M.Sc. in Multimedia Systems Professor Marie Redmond	Mr Douglas Repetto, Columbia University, New York, USA	2006-2009
M.Sc. / P. Grad. Dip. in Technology and Learning Ms Anne Fitzgibbon	Professor Rose Luckin, University of London, London, UK	2007-2010
P. Grad. Dip. in Applied Building Repair and Conservation Dr. Sara Pavia	Mr. Paul McMahon, Brian Road, Marino, Dublin	2008-2011
P. Grad. Dip. in Construction Law and Contract Administration Dr. Niamh Harty	Ms Siobhan Kenny, Hussey Fraser Solicitors, Ballsbridge, Dublin	2006-2009
P. Grad. Dip. in Environmental Engineering Mr Paul Johnston	Dr. Adrian Butler, Imperial College, London, UK	2008-2011
P. Grad. Dip. in Fire Safety Practice (Buildings and Other Structures) Dr. Trevor Orr	Mr. Hugh O'Neill, Dublin Fire Brigade, Dublin	2005-2009
P. Grad. Dip./M.Sc. in Health Informatics Dr. Lucy Hederman	Professor Johan Van der Lei, Erasmus University Rotterdam, The Netherlands	2007-2010
P. Grad. Dip. in Health & Safety in Construction Dr. Niamh Harty	Mr Martin O' Halloran, CEO, Health & Safety Authority, Dublin	2007-2010
PG Diploma in Highway & Geotechnical Engineering Dr. Jim McElvaney	Professor Martin Snaith, University of Birmingham, Birmingham, UK	2008-2011
P. Grad. Dip. in Project Management Dr. Trevor Orr	Dr. Alan Hore, DIT, Bolton Street, Dublin	2008-2011
P. Grad. Dip. in Statistics Mr E Mullins	Dr. David Williams, University College Dublin	2006-2009
Faculty of Health Sciences		
D.Dent.Ch. in Oral Surgery Professor Leo Stassen	Professor Graham Ogden, University of Dundee, Dundee, UK	2008-2011
D.Dent.Ch. in Paediatric Dentistry Dr. Anne O'Connell	Professor Christopher Deery, University of Sheffield, Sheffield, UK	2007-2010
	Professor Martin Kinirons, Cork Dental Hospital & School, Cork	2008-2011
D.Dent.Ch. in Periodontics Professor Noel Claffey	Professor Jan Wemstrom, University of Gothenburg, Gothenburg, Sweden	2008-2011
D.Dent.Ch. in Prosthodontics Professor Brian O'Connell	Professor Stephen Rosenstiel, Ohio State University, Ohio, USA	2007-2010
D.Dent.Ch. in Special Care Dentistry Professor June Nunn	Professor Sheelagh Thompson, Cardiff University, Cardiff, UK	2008-2011
M.Sc. in Cardiology Dr. Niall Mulvihill	Dr. Peter O'Callaghan, University of Cardiff, Cardiff, UK	2006-2009
M.Sc. / P. Grad. Dip. in Clinical Chemistry Dr. Gerard Boran	Professor Ramasamy Swaminathan, Guy's and St. Thomas' Hospitals Trust, London, UK	2006-2009
M.Sc. / P. Grad. Dip. in Gerontological Nursing Ms Anna Watson	Professor Jan Reed, Northumbria University at Newcastle, Newcastle, UK	2006-2009
M.Sc. in Global Health Dr. Adebola Adedimeji	Professor Michael Reich, Harvard School of Public Health, Boston, USA	2008-2011
M.Sc. in Health Services Management Ms Eilish McAuliffe/Ms Mandy Lee	Professor William Sheaff, University of Plymouth, Devon, UK	2006-2009
M.Sc. in Hospital Pharmacy Ms Niamh McMahon	Professor John Graham Davies, University of Brighton, Brighton, UK	2006-2009
M.Sc. in Medical Imaging Ms Bernadette Moran – Nuclear Medicine	Mr Kenneth Holmes, University of Cumbria, Lancaster, UK	2007-2010
M.Sc. / P. Grad. Dip. in Mental Health Mr Michael Brennan	Professor Patrick McCartan, Queens University, Belfast, N. Ireland	2007-2012

M.Sc. in Midwifery/P. Grad. Dip. in Professional Midwifery Studies Dr. Elizabeth Curtis, Dr. Fintan Sheerin	Dr. Denis Walsh, University of Central Lancashire, Preston, UK	2006-2009
M.Sc. in Molecular Medicine Dr. Ross McManus/Professor Mark Lawler/ Dr. Aideen Long/Dr. Yuri Volkov	Profesor David Jackson, John Radcliffe Hospital, Oxford, UK	2008-2011
M.Sc. in Neuroscience Dr. Thomas Connor	Dr. Maeve Caldwell, University of Bristol, Bristol, UK	2006-2009
M.Sc. in Nursing/P. Grad. Dip. in Professional Nursing Studies Mr Tom Noone	Ms. Mary Watkins, University of Ulster, Newtownabbey, N. Ireland	2006-2010
M.Sc. in Occupational Therapy Ms Clodagh Nolan / Dr. Deirdre Connolly	Dr. Jean Tyrrell, Université Pierre Mendes France, Grenoble, France	2006-2009
M.Sc. in Physical Sciences in Medicine Professor Neil O'Hare/Dr. Gerard Boyle	Professor David Lurie, University of Aberdeen, Aberdeen, UK	2007-2010
M.Sc. / P. Grad. Dip. in Palliative Care Dr. Kenneth Connaire	Professor Jane Seymour, Queens Medical Centre, Nottingham, UK	2007-2010
M.Sc. / P. Grad. Dip. in Pharmaceutical Analysis Dr. John Clancy	Dr. Robert Williams, Enniskerry, Co. Wicklow	2008-2011
M.Sc. in Pharmaceutical Medicine Dr. Mary Teeling /Dr. Mary Jo Mac Avin	Professor Denis Johnston, Queens University Belfast, N. Ireland	2006-2009
M.Sc. in Pharmaceutical Technology Dr. Carsten Enhardt	Professor Rob Forbes, University of Bradford, Bradford, UK	2008-2011
M.Sc. in Sports Medicine Dr. Nicholas Mahony	Professor Domhnall MacAuley, University of Ulster, Belfast, N. Ireland	2008-2011
	Professor Per Renstrom, Hasselby, Sweden	2008-2011
P. Grad. Dip./ M.Sc. in Community Pharmacy Dr. Sheila Ryder	Dr. Philip J. Rodgers, University of Bath, Bath, UK	2006-2009
P. Grad. Dip. in Conscious Dentistry Dr. Mary Clarke	Dr. Leslie Loughman, Freshfield, Merseyside, UK	2008-2011
P. Grad. Dip./M.Sc. in Exercise Physiology Dr. Stuart Warmington	Professor Myra Nimmo, Loughborough University, Leicestershire, UK	2007-2010
P. Grad. Dip./M.Sc. in Pharmaceutical Manufacturing Technology Ms Lorna Loughrey	Professor David Woolfson, Queens University Belfast, N. Ireland	2006-2009
P. Grad. Dip. in Clinical Health Sciences Education Dr. Fintan Sheerin	Mrs Margaret Mary Watkins, University of Ulster, Coleraine, N. Ireland	2006-2009
P. Grad. Dip. in Cognitive Psychotherapy Dr. Brian Fitzmaurice	Ms Anne Garland, Nottingham Psychotherapy Unit, St Ann's House, Nottingham, UK	2007-2010
P. Grad. Dip. in Magnetic Resonance Imaging Technology Ms Bernadette Moran	Ms. Catherine Westbrook, Anglia Ruskin University, Cambridge, UK	2008-2010
P. Grad. Dip. in Midwifery Ms. Margaret Carroll	Dr. Jean Rankin, University of Paisley, Glasgow, UK	2006-2009
P. Grad. Dip. in Nuclear Medicine Ms Bernadette Moran	Mr. Ken Holmes, St Martins College, Lancaster, UK	2006-2009
P. Grad. Dip. in Oncological Nursing Ms Honor Nicholl	Ms. Maura Dowling, National University of Ireland, Galway	2007-2010
P. Grad. Dip. in Specialist Nursing Ms Louise McDonnell (<i>A&E, Intensive Care, Orthopaedics, Perioperative, Renal</i>)	Dr. Laserina O Connor, University College Dublin	2007-2010
P. Grad. Dip. in Specialist Nursing Ms Honor Nicholl (<i>Severe and enduring mental illness</i>)	Mr Jim Maguire, Athlone Institute of Technology, Athlone	2007-2010
P. Grad. Dip. In Specialist Nursing Honor Nicholl (<i>Dementia care for Persons with intellectual disability</i>)	Ms Orla O'Reilly, Dublin City University, Dublin	2007-2010
Higher Diploma in Children's Nursing Ms Carole King	Ms Dympna O Connell, St Angela's College, Co. Sligo	2007-2010

Appendix 7: Applications to the Research register by School for entry in 2009/2010 (inc March 2010) as of (28 March 2010) and registered research students by School.

SCHOOL	No of applicants	No of male applicants	No of female applicants	No of EU applicants	No of Non-EU applicants	No of Full-Time applicants	No of Part-Time applicants	No of offers made	% of successful applicants (no of offers to the no of applicants)	No of registered students yr 1 in 0809 as 19 Jan 09	% of registered students (no of registered students to the no of successful applicants)	No of Research Students Year 1-4 ²	No of Masters Year 3+	No of Ph.D. Year 5 +	Total registered research in school
BIOCHEMISTRY & IMMUNOLOGY	17	8	9	17	0	17	0	16	94.1%	16	100.0%	60	6	2	68
BUSINESS	17	8	9	15	2	14	3	13	76.5%	10	76.9%	28	3	11	42
CHEMISTRY	38	23	15	35	3	37	1	33	86.8%	32	97.0%	100	0	11	111
COMPUTER SCIENCE & STATISTICS	52	37	15	39	13	47	5	46	88.5%	44	95.7%	146	10	24	180
DENTAL SCIENCE	49	20	29	29	20	49	0	13	26.5%	11	84.6%	31	3	0	34
DRAMA, FILM & MUSIC	23	8	15	19	4	22	1	16	69.6%	12	75.0%	35	3	5	43
EDUCATION	21	6	15	18	3	12	9	16	76.2%	14	87.5%	53	6	10	69
ENGINEERING	101	75	26	89	12	92	9	82	81.2%	72	87.8%	181	12	11	204
ENGLISH	49	17	32	27	22	49	0	29	59.2%	19	65.5%	58	1	5	64
GENETICS & MICROBIOLOGY	20	11	9	14	6	19	1	19	95.0%	17	89.5%	56	7	3	66
HISTORIES & HUMANITIES	44	18	26	35	9	41	3	33	75.0%	21	63.6%	96	4	14	114
LANGUAGES, LITERATURES, & CULTURAL STUDIES	12	3	9	10	2	12	0	11	91.7%	7	63.6%	32	6	4	42
LAW	33	22	11	29	4	28	5	32	97.0%	24	75.0%	54	3	6	63
LINGUISTIC, SPEECH & COMMUNICATION SCIENCES	17	5	12	13	4	15	2	14	82.4%	10	71.4%	24	4	7	35
MATHEMATICS	6	6	0	5	1	6	0	5	83.3%	4	80.0%	16	-	-	16
MEDICINE	106	38	68	98	8	63	43	99	93.4%	95	96.0%	234	7	24	265
NATURAL SCIENCES	30	16	14	27	3	28	2	25	83.3%	23	92.0%	111	-	16	127
NURSING AND MIDWIFERY	23	3	20	22	1	14	9	22	95.7%	22	100.0%	44	3	4	51
PHARMACY & PHARMACEUTICAL SCIENCES	24	7	17	22	2	23	1	22	91.7%	20	90.9%	59	0	1	60
PHYSICS	36	31	5	28	8	35	1	33	91.7%	28	84.8%	95	1	13	108
PSYCHOLOGY	98	23	75	81	17	97	1	60	61.2%	48	80.0%	109	4	4	114
RELIGIONS, THEOLOGY & ECUMENICS	34	21	13	23	11	33	1	29	85.3%	16	55.2%	41	6	5	52
SOCIAL SCIENCES & PHILOSOPHY	103	54	49	69	34	102	1	36	35.0%	36	100.0%	99	5	11	115
SOCIAL WORK & SOCIAL POLICY	16	3	13	15	1	14	2	15	93.8%	11	73.3%	42	1	4	47
TOTAL	969	463	506	779	190	869	100	719	82.7%	613	85.3%	1804	91	195	2090

Appendix 8: Application data for Direct Admissions applications for 2009/10

SCHOOL	Course Title	No of offers made	No of male offers	No of female offers	No of EU offers	No of Non-EU offers	No of Full-Time offers	No of Part-Time offers	No. of Registered Students - Year 1 in 09/10 as of 22 Dec 2009	EU	Non-EU
Business	M.Sc. Mgmt Organisational Behaviour	13	4	9	13	0	1	12	12	12	0
	M.Sc. Mgmt Management Practice Programme	9	6	3	9	0	0	9	9	9	0
	Master in Business Administration (MBA)	26	19	5	12	14	26	0	21	11	10
Education	H. Dip. in Education - Primary Ed.	162	24	138	116	46	162	0	162	120	42
	Postgraduate Diploma in Education	130	35	95	125	5	130	0	131	130	1
Nursing and Midwifery	Postgraduate Diploma in Midwifery - April 2009	44	3	41	41	3	44	0	44	41	3
Medicine	M.Sc. Biomedical Sciences	6	4	5	8	1	9	0	6	6	0
Misc.	One year student not reading for a higher degree	3	0	3	2	1	3	0	2	2	0
	One term student not reading for a higher degree	18	9	9	1	17	6	12	18	17	1
	One Module/series of lectures	1	1	0	0	1	0	1	0	0	0
Total		412	105	308	327	88	381	34	405	348	57

Appendix 8: Application data for applications processed through PAC online application system for 2009/10

School	Course Title	No. of Applicants	No. of Applicants - Full Time	No. of Applicants - Part Time	No. of EU Accepted Offers	No. of Non-EU Accepted Offers	Total Accepted Offers	% Successful applicants (no. of accepted offers to no. of applicants)	No. of Registered Students - Year 1 in 09/10 as of 22 Dec 2009	EU	Non -EU
BUSINESS	M.Sc. Finance (Part Time)	33		33	8	0	8	24%	8	8	0
	M.Sc. Finance (Full Time)	124	124		24	5	29	23%	27	23	4
	M.Sc. International Management (Full Time)	62	62		10	3	13	21%	11	9	2
	M.Sc. International Management (Part Time)	20		20			0	0%	0	0	0
CHEMISTRY	M.Sc. Chemical and Biological Techniques I	1	1	0	0	0	0	0%	0	0	0
	M.Sc. Chemical and Biological Techniques II	0	0	0	0	0	0	0%	0	0	0
	Postgraduate Diploma in Chemical and Biological Techniques I	0	0	0	0	0	0	0%	0	0	0
	Postgraduate Diploma in Chemical and Biological Techniques II	0	0	0	0	0	0	0%	0	0	0
COMPUTER SCIENCE & STATISTICS	M.Sc. Management of Information Systems	80		80	32	2	34	43%	33	31	2
	M.Sc. Interactive Digital Media	96	96	0	16	0	16	17%	16	16	0
	M.Sc. Computer Science (Networks & Distributed Systems)	119	119	0	22	3	25	21%	25	22	3
	M.Sc. Computer Science Mobile & Ubiquitous Computing	98	98	0	11	7	18	18%	14	8	6
	M.Sc. Technology & Learning	64		64	23	0	23	36%	21	21	0
	M.Sc. Computer Science (Interactive Entertainment Technology)	89	89		21	1	22	25%	20	18	2
	Postgraduate Diploma in Statistics	136	0	136	102	4	106	78%	110	106	4
	Postgraduate Diploma Computing with Advanced Interdisciplinary Outlook (Sept)	27	0	0	9	0	9	33%	8	8	0
Postgraduate Diploma Computing (Conv.) with Advanced Interdisciplinary Outlook (Sept)	23	0	0	5	1	6	26%	6	5	1	
DENTAL SCIENCE	Postgraduate Diploma Conscious Sedation Dentistry	34		34	8	0	8	24%	7	7	0
DRAMA, FILM & MUSIC	M. Phil. Music & Media Technologies	30	30	0	11	1	12	40%	12	11	1
	Postgraduate Diploma Music & Media Technologies	27	27	0	11	1	12	44%	13	12	1
	M.Phil. Film Theory and History	48	48	0	12	2	14	29%	14	12	2

	M.Phil. Theatre and Performance	44	44	0	7	4	11	25%	9	4	5
	M.Phil. Musicology and Music Theory	4	4	0			0	0%	0	0	0
	M.Phil. Irish Film, Music & Theatre	22	22	0	2	3	5	23%	5	2	3
EDUCATION	Master of Studies (School Leadership)	56	0	56	19	0	19	34%	39	39	
	Master in Education (Full Time)	61	61	0	2	1	3	5%	3	2	1
	Master in Education (Part Time)	104	0	104	51	2	53	51%	50	48	2
ENGINEERING	M.Sc. Mechanical Engineering (ERASMUS MUNDUS)	10	10	0	0	3	3	30%	3	0	3
	Postgraduate Diploma in Physical Planning	5	0	5	0	0	0	0%	0	0	0
	M.Sc. Bioengineering (Full Time)	51	51	0	14	1	15	29%	15	14	1
	M.Sc. Bioengineering (Part Time)	17	0	17	2	0	2	12%	2	2	0
	Postgraduate Diploma Highway and Geotechnical Engineering	39	0	39	7	0	7	18%	7	7	0
	M.Sc. Civil Engineering (Full Time)	119	119		18	0	18	15%	18	18	0
	M.Sc. Civil Engineering (Part Time)	34	0	34	1	0	1	3%	0	0	0
	Postgraduate Diploma Construction Law & Contract Administration	66	0	66	26	1	27	41%	26	25	1
	Postgraduate Diploma Fire Safety Practice	47	0	47	24	0	24	51%	22	22	0
	Postgraduate Diploma Project Management	153	0	153	70	1	71	46%	69	68	1
	Postgraduate Diploma Environmental Engineering	83	0	83	24	0	24	29%	25	25	0
	Postgraduate Diploma Health and Safety Construction	34	0	34	12	0	12	35%	11	11	0
	Postgraduate Diploma Applied Building Repair & Conservation	46	0	46	17	0	17	37%	14	14	0
ENGLISH	M.Phil. Irish Writing	57	57	0	10	8	18	32%	17	9	8
	M.Phil. Creative Writing	83	83	0	8	6	14	17%	13	7	6
	M.Phil. Popular Literature	82	82	0	18	10	28	34%	27	19	8
	M.Phil. Literatures of the Americas	42	42	0	7	0	7	17%	7	7	0
HISTORIES & HUMANITIES	M.Phil. Medieval History	28	28	0	5	2	7	25%	7	5	2
	M.Phil. Reformation & Enlightenment Studies	16	16	0	4	1	5	31%	5	4	1
	M.Phil. Gender & Women`s Studies (Full Time)	43	43	0	8	2	10	23%	10	8	2
	M.Phil. Gender & Women`s Studies (Part Time)	7	0	7	2	0	2	29%	2	2	0
	M.Phil. Irish Art History	28	28	0	8	2	10	36%	11	9	2
	M.Phil. Modern Irish History	49	49	0	18	1	19	39%	21	20	1
	M.Phil. Classics	42	42	0	10	0	10	24%	10	10	0
LANGUAGES, LITERATURES & CULTURAL STUDIES	M.Phil. (Textual and Visual Studies)	17	17	0	4	0	4	24%	5	5	0
	M.Phil. Medieval Language, Literature & Culture	24	24	0	4	4	8	33%	7	3	4

	M.Phil. Early Irish	1	1	0	0	0	0	0%	0	0	0
	M.Phil. Literary Translation	25	25	0	9	3	12	48%	10	8	2
	M.Phil. Comparative Literature	35	35	0	15	1	16	46%	14	13	1
	M.Phil. German Literature with Language Pedagogy (Full Time)	0	0	0	0	0	0	0%	0	0	0
	Postgraduate Diploma Old Irish (Full Time)	1	1	0	0	0	0	0%	0	0	0
	M.Phil. German Literature with Language Pedagogy (Part Time)	0	0	0	0	0	0	0%	0	0	0
	M.Phil. European Studies	22	22	0	9	0	9	41%	9	9	0
LAW	LL.M. (Master in Laws)	278	278	0	93	11	104	37%	102	92	10
	M.Phil. (Applied Linguistics) (Full Time)	22	22	0	4	1	5	23%	5	4	1
	M.Phil. (Applied Linguistics) (Part Time)	3	0	3	3	0	3	100%	3	3	0
	M.Phil. (Speech and Language Processing) (Full Time)	16	16	0	3	1	4	25%	4	3	1
	M.Phil. (Speech and Language Processing) (Part Time)	3	0	3	0	0	0	0%	0	0	0
LINGUISTIC, SPEECH & COMMUNICATION SCIENCES	M.Phil. English Language Teaching	13	13	0	4	2	6	46%	3	2	1
	M.Sc. Clinical Speech & Language Studies	13	0	13	6	0	6	46%	5	5	0
	Postgraduate Diploma Clinical Speech and Language Studies (Dysphagia)	18	0	18	9	0	9	50%	8	8	0
	M.Phil. Linguistics (Full Time)	34	34	0	12	3	15	44%	13	11	2
	M.Phil. Linguistics (Part Time)	5	0	5	1	0	1	20%	1	1	0
MATHEMATICS	M.Sc. High Performance Computing	24	24	0	9	1	10	42%	7	7	0
	M.Sc. Sports and Exercise Medicine	21	21		9	0	9	43%	8	8	0
	M.Sc. Cardiology	26		26	11	0	11	42%	10	10	0
	M.Sc. Exercise Physiology	21		21	9	1	10	48%	8	8	0
	M.Sc. Health Services Management	33		33	16	0	16	48%	15	15	0
	M.Sc. Paediatrics	3					0	0%	0	0	0
	M.Sc. Molecular Pathology (Full Time)	6	6				0	0%	0	0	0
	M.Sc. Molecular Pathology (Part Time)	21		21	16	0	16	76%	16	16	0
MEDICINE	M.Sc. Occupational Therapy	3		3			0	0%	0	0	0
	M.Sc. Child & Adolescent Psychoanalytic Psychotherapy	4		4			0	0%	0	0	0
	M.Sc. Psychoanalytic Psychotherapy	1		1			0	0%	0	0	0
	M.Sc. Pharmaceutical Medicine	21		21	8	1	9	43%	8	7	1
	M.Sc. Cardiovascular Rehabilitation & Prevention (Part Time)	13		13	3	0	3	23%	3	3	0
	M.Sc. Medical Imaging	19		19	9	0	9	47%	12	11	1
	M.Sc. Global Health	65			10	15	25	38%	20	9	11

	M.Sc. Clinical Chemistry	10		10	2	0	2	20%	1	1	0
	M.Sc. Physical Sciences in Medicine (Full Time)	26	26		10	0	10	38%	9	9	0
	M.Sc. Health Informatics	75		75	26	0	26	35%	23	23	0
	Postgraduate Diploma Nuclear Medicine	0					0	0%	0	0	0
	Postgraduate Diploma Exercise Physiology	0					0	0%	0	0	0
	Postgraduate Diploma Clinical Engineering (Equipment Management)	0		0			0	0%	0	0	0
	M.Sc. Neuroscience	78	78		20	3	23	29%	21	18	3
	M.Sc. Respiratory Physiotherapy	5		5	2	0	2	40%	2	2	0
	Postgraduate Diploma Pharmaceutical Medicine	6		6	2	0	2	33%	3	3	0
	Postgraduate Diploma Cognitive Psychotherapy	41		41	9	1	10	24%	9	8	1
	Postgraduate Diploma Molecular Medicine	7		7	1	0	1	14%	1	1	0
	Postgraduate Diploma Gynaecology & Obstetrics	27		27			0	0%	0	0	0
	M.Sc. Physical Sciences in Medicine (Part Time)	8		8			0	0%	0	0	0
	M.Sc. Molecular Medicine (Full Time)	69	69		24	0	24	35%	21	21	0
	M.Sc. Molecular Medicine (Part Time)	10		10	1	0	1	10%	1	1	0
	M.Sc. Cardiovascular Rehabilitation & Prevention (Full Time)	8	8		0	1	1	13%	1	0	1
	M.Sc. Global Health	6	6		3	0	3	50%	4	4	0
	M.Sc. Advanced Radiotherapy Practice	2		2			0	0%	0	0	0
NATURAL SCIENCES	M.Sc. Biodiversity & Conservation	38	38		15	3	18	47%	16	13	3
	M.Sc. Environment and Development	39	39		15	1	16	41%	14	14	0
	M.Sc. Environmental Sciences	78	78		14	2	16	21%	15	13	2
NURSING & MIDWIFERY	M.Sc. Nursing (Full Time)	6	6				0	0%	0	0	0
	M.Sc. Nursing (Part Time)	36		36	12	0	12	33%	11	11	0
	M.Sc. Midwifery (Full Time)	0	0				0	0%	0	0	0
	M.Sc. Midwifery (Part Time)	8		8	5	0	5	63%	5	5	0
	M.Sc. Gerontological Nursing (Part Time)	31		31	20	0	20	65%	18	18	0
	M.Sc. Mental Health (Part Time)	55		55	34	0	34	62%	35	35	0
	M.Sc. Mental Health (Full Time)	9	9		3	0	3	33%	3	3	0
	M.Sc. Palliative Care	16		16	5	1	6	38%	5	5	0
	Postgraduate Diploma Clinical Health Sciences Education	12		12	2	0	2	17%	2	2	0
M.Sc. Cancer Care	16		16	13	0	13	81%	13	13	0	

	Postgraduate Diploma Oncological Nursing (Full Time)	16	16				0	0%	0	0	0	
	Postgraduate Diploma Specialist Nursing	80	80		51	1	52	65%	47	47	0	
	Higher Diploma Children`s Nursing	47	47		14	0	14	30%	14	14	0	
	Higher Diploma Midwifery	6	6				0	0%	0			
PHARMACY & PHARMACEUTICAL SCIENCES	M.Sc. Pharmaceutical Manufacturing Technology	22		22	9	1	10	45%	11	11	0	
	M.Sc. Pharmaceutical Analysis (Full Time)	27	27		6	2	8	30%	9	8	1	
	M.Sc. Pharmaceutical Analysis (Part Time)	6		6	2	0	2	33%	2	2	0	
	M.Sc. Hospital Pharmacy	29		29	11	0	11	38%	11	11	0	
	M.Sc. Community Pharmacy	6		6	4	0	4	67%	9	9	0	
	M.Sc. Pharmaceutical Technology (Full Time)	19	19		5	2	7	37%	7	4	3	
	Postgraduate Diploma Pharmaceutical Manufacturing Technology	14		14	9	0	9	64%	13	13	0	
	Postgraduate Diploma Community Pharmacy	4		4	3	0	3	75%	8	8	0	
	PSYCHOLOGY	M.Sc. Applied Psychology (FT)	154	154		35	0	35	23%	34	34	0
		M.Sc. Applied Psychology (PT)	37		37	3	0	3	8%	3	3	0
Postgraduate Diploma Clinical Supervision (Psychology)		9		9	2	0	2	22%	0	0	0	
Postgraduate Diploma Applied Behaviour Analysis		65		65	20	1	21	32%	21	20	1	
Higher Diploma Psychology		72	72		18	0	18	25%	18	18	0	
M.Sc. Clinical Supervision		20		20	6	0	6	30%	8	8	0	
M.Sc. Psychology (Applied Behaviour Analysis)		43	43		10	0	10	23%	10	10	0	
RELIGIONS, THEOLOGY AND ECUMENICS	M.Phil. Ecumenical Studies (Ecum.) (Full Time)	18	18		7	2	9	50%	10	9	1	
	M.Phil. Ecumenical Studies (Ecum.) (Part Time)	1		1	1	0	1	100%	1	1	0	
	M.Phil. Peace Studies (Full Time)	84	84		15	19	34	40%	29	14	15	
	M.Phil. Peace Studies (Part Time)	12		12	2	0	2	17%	2	2	0	
	M.Phil. Reconciliation Studies (Full Time)	32	32		2	5	7	22%	8	3	5	
	M.Phil. Reconciliation Studies (Part Time)	7		7	2	0	2	29%	2	2	0	
	Postgraduate Diploma Conflict & Dispute Resolution Studies	44		44	18	0	18	41%	17	17	0	
	Masters in Theological Studies (Part-Time)	19		19	19	0	19	100%	19	19	0	
Masters in Theological Studies (Part-Time)	5		5	5	0	5	100%	5	5	0		

SOCIAL SCIENCES & PHILOSOPHY	M. Phil Ethnic and Racial Studies	17	17		7	1	8	47%	6	5	1
	M.Sc. Economics (Full Time)	104	104		23	3	26	25%	23	21	2
	M.Sc. Economics (Part Time)	19		19	1	0	1	5%	1	1	0
	M.Sc. Comparative European Politics (Full Time)	62	62		15	5	20	32%	17	14	3
	M.Sc. Comparative European Politics (Part Time)	5		5			0	0%	1	1	0
SOCIAL WORK & POLICY	M.Phil. Psychoanalytic Studies	24	24		11	0	11	46%	9	9	0
	M.Sc. Child Protection & Welfare	18		18			0	0%	5	5	0
	M.Sc. Applied Social Research	52	52		22	2	24	46%	24	22	2
	Master in Social Work	124	124		23	1	24	19%	21	20	1
	Postgraduate Diploma Child Protection and Welfare	38		38	18	0	18	47%	17	17	0
TOTAL		5477	3352	2007	1632	179	1811	33%	1764	1609	155