



1st October 2024 | Issue 26

Hi everyone, and welcome back! We hope everyone had a lovely summer holiday. With term starting up again, it's been wonderful to see everyone back in the department and to hear the building buzzing with excitement again. Many of you have been incredibly busy this summer and we're excited to share it all here with you in this month's newsletter!

The G(e)ossip will be released every month. Past issues are archived and uploaded on the Geology website which you can access [here](#).

If you have feedback or anything to be added to upcoming newsletter issues, please send us an email at geossip.tcd@gmail.com.

-The G(e)ossip Team

DEPARTMENT NEWS

Congratulations to **Vincent Monchal** who defended his thesis on the 12th of August and successfully passed it with minor corrections.

Since the 1st of September, Vincent started a 6 month post-doc project (GSI shortcall) with **Dave Chew** and **Kerstin Drost** here at Trinity along with collaborators John Walsh, Koen Torremans, and La Donna Fredericks from UCD.

Additionally, Vincent gave two presentations on the Post-Variscan evolution of Ireland at a symposium at UCD as well as at EMC this summer.



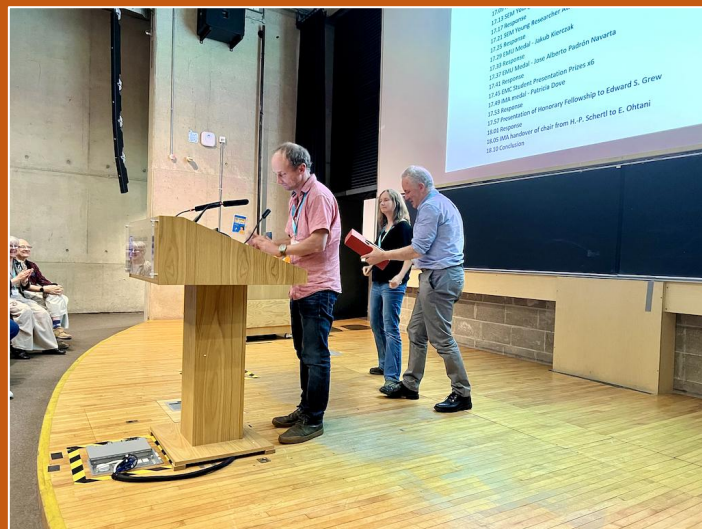
DEPARTMENT NEWS

Welcome to **Rose Dunne**, who joined us in June as a Teaching Fellow.

Rose supports the Climate Leadership micro-credential, and the postgraduate Climate Entrepreneurship course.



This August, Trinity hosted the 4th European Mineralogical Conference. **Dave Chew** and **Emma Tomlinson** along with Kevin Murphy of the Mineralogical Society of Great Britain & Northern Ireland were invaluable in hosting the conference and ensured things ran smoothly. The meeting encompassed a broad range of geoscience topics, attracting roughly 500 participants from across Europe and beyond.

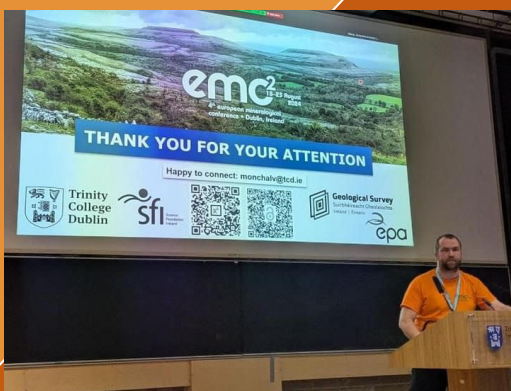


Dave Chew opening the conference (left) & **Dave Chew**, **Emma Tomlinson**, and **Kevin Murphy** closing the conference (right) in the in the Burke Theatre.

A number of our Geology staff (**Emma Tomlinson**, **David Chew**, **Michael Stock**, **Sean McClenaghan**, **Juan-Diego Rodriguez-Blanco**, **Remi Rateau**, **Caterina Melai** and **Michele Rinaldi**) chaired sessions and several of our postgraduate students and postdocs (**Kerstin Dorst**, **Andrea Pierozzi**, **Vincent Monchal** and **Daniela Vitarelli**) volunteered at the conference. Additionally, field tips were run by **Emma Tomlinson** and **Sean McClenaghan** to Giant's Causeway and by **Michael Stock** and **Jack Beckwith** to Carlingford.



Giant's Causeway field trip with **Emma Tomlinson** (photo: **Sean McClenaghan**).



Vincent Monchal presenting : *Applying U-Pb calcite direct dating by LA-ICPMS mapping to investigate shallow crustal deformation histories in Ireland*

Our department was well represented with talks from **Bakang Kaekane**, **Caterina Melai**, **Vincent Monchal**, **Gary O'Sullivan**, **Andrea Pierozzi**, **Zuko Qashani**, **Remi Rateau**, **Michele Rindali**, and **Micheal Stock** and posters from **Melanie Maddin**, **Andrea Pierozzi**, **Zuko Qashani**, **Michele Rinadli**, **Luca Terribili**, and **Emma Tomlinson**.

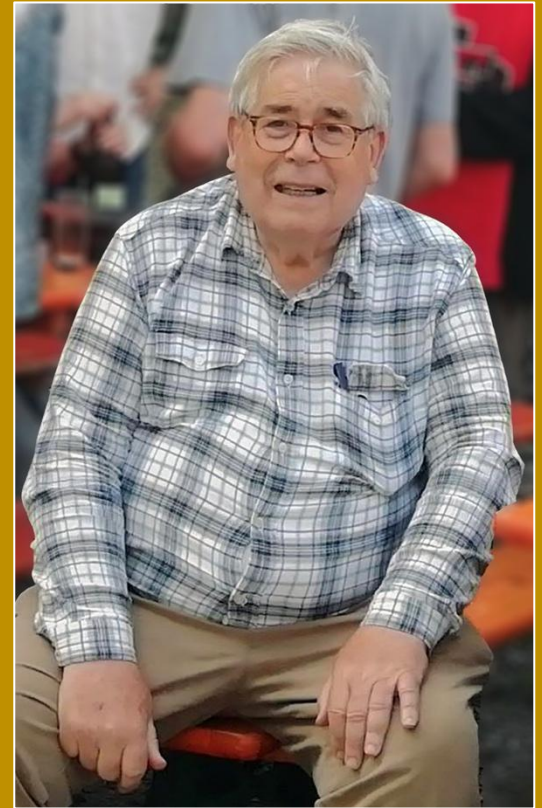
emc² 18–23 August 2024
4th european mineralogical conference • Dublin, Ireland

Irish Journal of Earth Sciences volume 42 dedicated to George Sevastopulo

George was employed in Trinity from the early 1960s and continued to research on crinoids, stratigraphy and geoaerchaeology up until his passing in 2021. A valued colleague, collaborative researcher, dedicated teacher and supervisor of over 30 PhD students and mentor to several Postdoctoral Fellows, he is remembered through the Palaeontological Laboratory being renamed for him.



In August a volume of the Irish Journal of Earth Sciences dedicated to him was published by the Royal Irish Academy. It contains an appreciation and nineteen papers on a range of topics close to his heart. Open-access papers are available at Project Muse (<https://muse-jhu-edu.elib.tcd.ie/issue/53046>).



COMMUNICATION



Earlier in the summer **Lydia Whittaker** attended the flagship networking event in Maynooth for 'PROMOTE' a HSE funded project which aims to create the world's first digitised network specifically for early-stage female researchers. The event involved a series of workshops with ECR's from a range of fields looking at not only finding avenues of interdisciplinary research but also supporting each other through the common challenges women face as ECR's.

PROMOTE is hoping to host more events as well as launching an app which contains articles such as accepted and rejected grant applications with their feedback (And they're currently looking for contributions to add to the network!).

These resources can be found at <https://promotewomen.ie> as well as updates on their social channels x: [@Promote_Women](https://twitter.com/Promote_Women).

COMMUNICATION

Dublin Magmatism Group at TCD bring together researchers from across different volcanology and magmatism research teams aiming to facilitate collaboration across different institutions invested in volcanological research across Dublin. There are now active social media channels on both Instagram and [X \(Twitter\)](https://twitter.com/dublinmagma) please follow [@dublinmagma](https://twitter.com/dublinmagma) for updates.



DEPARTMENT NEWS

Congratulations to **Erica Krueger** and **Quentin Crowley** who received awards at the iCRAG annual summit in June. Erica received two awards - one research paper of the year, and the other for her contributions to science communication. Quentin received the iCRAG industry and entrepreneurship award. Quentin Crowley also received an iCRAG Education and Public Engagement award in August.



DEPARTMENT NEWS – PRESENTATION

Quentin Crowley gave an invited presentation "Innovation in radiological protection: application of geospatial and geostatistical techniques for improved public health" at Queen's University Belfast on May 22nd.

POSTGRAD STUDENT SUPPORT

GRAD CHATS

FOR ALL POSTGRADUATE STUDENTS

To equip students with the skills to manage stress, work-life balance, increase self-care practices, communication and assertiveness skills, and look at how best to negotiate the supervisory relationship

Mondays from 2pm - 3.10pm in-person at the Student Counselling Service offices (3rd floor, 7-9 Leinster Street South, Dublin 2)

With: Tom Adams (SCS) and Martin McAndrew (Postgraduate Advisory Service)

Scan me to sign up

Learn more on the PG Grad Chats [webpage](#) and pre-register [here](#).

STONEBUILT IRELAND

Louise Caulfield and **Patrick Wyse Jackson** have recently published two entries on Connemara Marble and Valentia Slate in the book *The First 55 IUGS Heritage Stones* (co-edited by Patrick) and published by the International Union of Geological Sciences. These are outputs of their STONEBUILT Ireland project cofunded by the Geological Survey Ireland and Office of Public Works.



Funding has been secured from the Geological Survey Ireland and Office of Public Works to continue this project until August 2027.

A relational online database developed by Una Farrell and populated by Louise and Patrick is available at www.stonebuiltireland.com.

WELLBEING

The [Silver Cloud programme](#) provides a great online tool to help you improve and maintain your wellbeing by addressing issues that can have a negative impact on your life. The program is provided by Student Counselling and is available to everyone in the Trinity Community.

COMMUNITY – CULTURE NIGHT

On the 20th of September, the Dublin Magmatism Group held another successful Culture Night with support from iCIRAG and volunteers from UCD. There was a great turn out for *Lava Land: The Awesome World of Volcanoes* which held a range of displays and activities centred around volcanic eruptions. The event was organised by DMG's **Eshbal Geifman** and **Lydia Whittaker** with volunteers **Fay Amstutz**, **Jack Beckwith**, **Anna Morrison**, **Andrea Pierozzi**, and **Daniela Vitarelli**.



COMMUNITY – OUTREACH

Quentin Crowley gave a presentation at a community outreach event called "Picture Your Future" in Portlaoise public library in June. The event was also attended by **Subhash Chandra**. "Picture Your Future" came about following a pilot community-based climate action programme run by Quentin and Subhash earlier in the year. Over 10,000 people from the Portlaoise area attended climate-focussed events in the local library over the course of the month.

Quentin Crowley also participated in a panel discussion and led a workshop in Co Clare on the 17th and 18th of August as part of a community Climate Action project funded by Creative Climate Action Fund, and in collaboration with local artists Maeve Stone and Alex Gill. Quentin's workshop explored how the local environment has change though geological time.

Blanka Kovács, alongside other members of the School of Natural Sciences, attended the XVth International Palynological Congress and XIth International Organization of Palaeobotany Congress in Prague, Czech Republic from 27-31 May. Blanka presented her research on *Mercury analyses of fossil plant substrates as indicators of Jurassic atmospheric Hg loading and volcanism*.



DEPARTMENT NEWS

A new micro-credential in Climate Leadership Development was launched in September, with over 81 students registered. **Quentin Crowley**, and **Subhash Chandra** are the micro-credential Director and Coordinator, and it is supported by **Rose Dunne** as a Teaching Fellow.

The micro-credential is offered by the School of Natural Sciences, and in collaboration with Ireland's Knowledge Centre for Carbon, Climate, and Community Action (www.IKC3.ie). A further intake is planned for early 2025 - keep an eye on the www.microcreds.ie website for further details.

MENTAL HEALTH MATTERS

TCD's Student Counselling Services is open and available to all registered students.

Check out their website [here](#) to read about the services they provide, email them at student-counselling@tcd.ie to request an appointment, and follow them on Instagram at [@tcd_headspace](#) for mindfulness and mental health awareness tips. They now offer [PhD research support groups](#) to keep you on track!



DEPARTMENT NEWS

Quentin Crowley attended a World Health Organisation meeting as an Expert Committee member on July 8th to update to the European Code Against Cancer, and to formulate recommendations to EU policy makers to improve legislative measures for health protection.

FIELD WORK

In early August, **Jack Beckwith**, **Eloïse Bretagne**, **Eshbal Giefman**, and **Anna Morrison** enjoyed a wonderful few days of fieldwork to mark the halfway-point of the Critical Ireland Project with **Michael Stock**. Along with international collaborators, they visited the Palaeogene Intrusions in Portrush (Co. Antrim) and Carlingford (Co. Louth) and presented their findings at the GSNi offices in Belfast.



DEPARTMENT NEWS

Subhash Chandra and **Quentin Crowley** hosted an IKC3 Sustainable Professionals Network meeting in TCD on May 21st. This included some TCD Geology alumni, and other professionals who work in a range of different sectors.



**SUSTAINABILITY
PROFESSIONALS
NETWORK IRELAND**
knowledge sharing
for a sustainable future

CONFIDENTIAL HELPLINE

[NiteLine](#) is a non-profit, non-judgemental, non-directive, anonymous and confidential listening service run by students for students. Our service is completely free and open every night of term from 9pm to 2.30am through instant messaging and over the phone. We are run by a team of dedicated volunteer students who have undergone rigorous training with the intention of supporting our peers. Our motto is "no problem is too big or too small."

NiteLine

Free, anonymous, confidential and non-judgemental listening.

OPEN EVERY NIGHT OF TERM
FROM 9PM-2.30AM

FREEPHONE:
1800 793 793

INSTANT MESSAGING:
WWW.NITELINE.IE

Aghdam, M. , Kavanagh, M., **Crowley, Q.** 2024. Utilization of radiometric data for mapping primary and secondary sources of gamma radiation and radon/thoron release potentials in Ireland, *Frontiers in Public Health*,12, [DOI](#).

Caulfield, Louise & Wyse Jackson, Patrick N. (2024) Connemara Marble, Ireland: an iconic Irish decorative stone. In Ehling, A., Kaur, G., **Wyse Jackson, P.N.**, Cassar, J., Aparecida del Lama, E. and Hedal, T. (eds) *The First 55 IUGS Heritage Stones*, International Union of Geological Sciences, pp. 138–141.

Ehling, A., Kaur, G., **Wyse Jackson, P.N.**, Cassar, J., Aparecida del Lama, E. and Hedal, T. (eds) (2024) *The First 55 IUGS Heritage Stones*, International Union of Geological Sciences, pp. 256.

Garcia-Tallegon, J., Inigo, A.C., & **Wyse Jackson, Patrick N.** (2024) Villamayor Stone, Spain: a singularly beautiful arkose sandstone. Ehling, A., Kaur, G., **Wyse Jackson, P.N.**, Cassar, J., Aparecida del Lama, E. and Hedal, T. (eds) *The First 55 IUGS Heritage Stones*, International Union of Geological Sciences, pp. 110–113.

Guyett, P.C., Chew, D., Azevedo, V., Blennerhassett, L.C., Rosca, C., & Tomlinson, E., 2024. Optimizing SEM-EDX for fast, high-quality and non-destructive elemental analysis of glass: *Journal of Analytical Atomic Spectrometry*, DOI: [10.1039/d4ja00212a](https://doi.org/10.1039/d4ja00212a).

Monchal, V., Rateau, R., Drost, K., Gagnaison, C., Mennecart, B., Toullec, R., & Chew, D., 2024. U-Pb direct dating on calcite paleosol nodules: first absolute age constraints on the Miocene continental succession of the Paris Basin: *EGUsphere* [preprint], DOI: [10.5194/egusphere-2024-2325](https://doi.org/10.5194/egusphere-2024-2325).

Tray, E., Brophy, D., de Eyto, E., Ó'Maoileidigh, N., Sheehan, T., Bradbury, I., **Crowley, Q.G.** 2024. Examining fish scale biomineral from Atlantic salmon populations, *Journal of Fish Biology*. [DOI](#).

Wyse Jackson, Patrick N. & Caulfield, Louise (2024) Valentia Slate, Ireland: versatile paving and roofing slate. In Ehling, A., Kaur, G., Wyse Jackson, P.N., Cassar, J., Aparecida del Lama, E. and Hedal, T. (eds) *The First 55 IUGS Heritage Stones*, International Union of Geological Sciences, pp. 182–185.

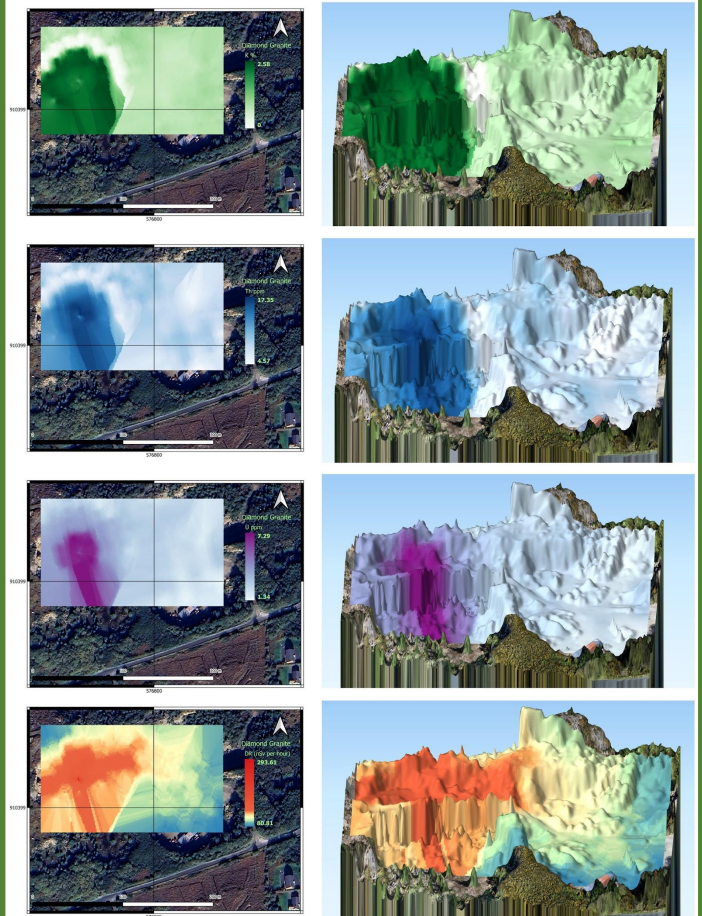


Figure from *Utilization of radiometric data for mapping primary and secondary sources of gamma radiation and radon/thoron release potentials in Ireland* (**Aghdam, Kavanagh, & Crowley, 2024**)

UPCOMING CONFERENCES

- **VMSG-MDSG 2025**
(6-8 January, TCD)
Submission deadline: 8 November
- **Goldschmidt 2025**
(6-11 July, Prague)
Submission deadline: 26 February

Turn off the light!



Please make sure when you're leaving your office for the day to close the door properly, turn off all the lights and appliances. This includes the hallway lights as well.

COMMUNITY



As a member of the **Trinity community**, you have the right to study or work in an environment that is **free from bullying, harassment, and sexual misconduct**. [Speak Out](#) provides the opportunity for you to make the University aware of incidents that you have either experienced or witnessed by reporting them anonymously.

STUDENT 2 STUDENT PEER SUPPORT

Student 2 Student Peer Support is back!

Thanks to the support of Trinity Trust, Student 2 Student is delighted to announce the return of our Peer Support Programme after 4 long years! **This is not the same as our Mentoring Programme**. S2S Mentors are student volunteers who offer group support to every incoming undergraduate student. Peer Supporters are student volunteers who provide **face-to-face, confidential listening and support to any TCD student** on request!

Peer Supporters have undergone over 35 hours of intensive training in active listening, emotional support and self-care. They are highly confidential, non-judgemental and are willing and ready to help! Students don't need to be in distress or crisis to talk to a Peer Supporter, but they can help with the larger problems as well as the smaller things.

[Request a Peer Supporter here!](#)

Please do not fill out a request on anyone else's behalf – but please do encourage any student you know who might need a listening ear to fill this link out themselves.

Peer Supporters aim to respond to requests within 48 hours (excluding weekends). They'll suggest a few possible times and organise an initial meeting. The new S2S space in [House 47](#) has a private room where students can meet for a chat, or Peer Supporters can arrange to go for a walk around campus or meet at a public spot nearby. Meetings can be once off, or as frequent as once a week.

You can find [more information about the Peer Support programme here](#) or email student2student@tcd.ie with any questions.

S2S Peer Support

Student2Student

CONTRIBUTIONS

We want to hear from you!

Did we miss something? Have you got any news to share with the department?

Please let us know at geossip.tcd@gmail.com to be featured in the next newsletter.
We would love to hear from you!

