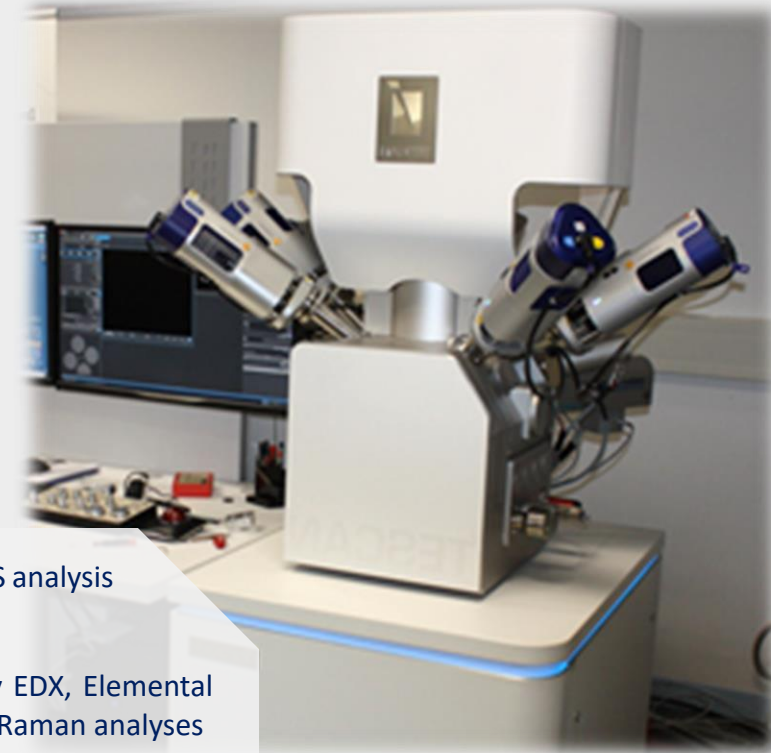


Microbeam Workshop

Monday, 04.12.2023

Trinity College Dublin

Museum Building, Lecture Hall M4



Program

- Background and basics on SEM and LA-ICP-MS analysis
- Routine techniques used in iCRAG LAB@TCD
- SEM: Imaging, Major and minor elements by EDX, Elemental mapping, Feature Analysis, Intro to EBSD and Raman analyses
- LA-ICP-MS: Trace elements, U-Pb geochronology, Mapping vs. spot analyses
- NEW - LA-ICP-MS/MS: Rb-Sr geochronology
- Sample preparation requirements and workflows
- Contacts and fee structure
- Q&A

Registration: [Register Here](#)

Contact:

microbeamworkshop@gmail.com

Before and after the lecture hall-based sessions there will be lab tours in small groups for interested participants.

| One day workshop

| Free of charge

| Registration now open

iCRAG LAB@TCD