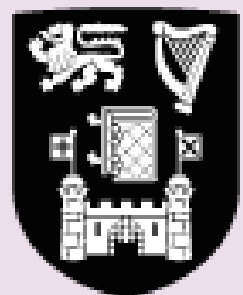


# Disability Service

# Pre-Orientation

Information for Parents  
and Guardians

Trinity  
disAbility Hub



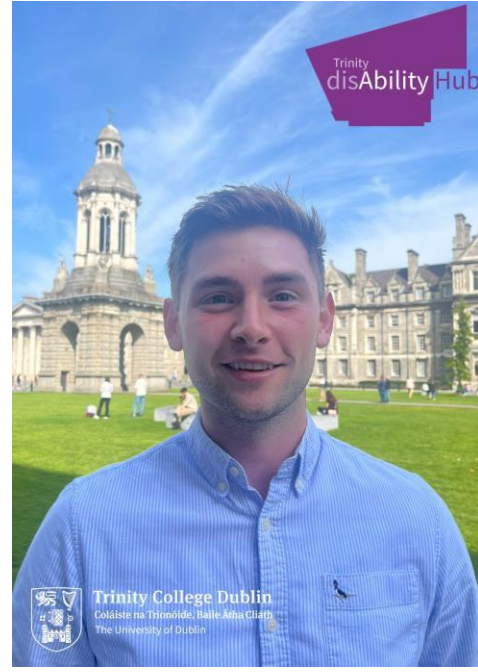
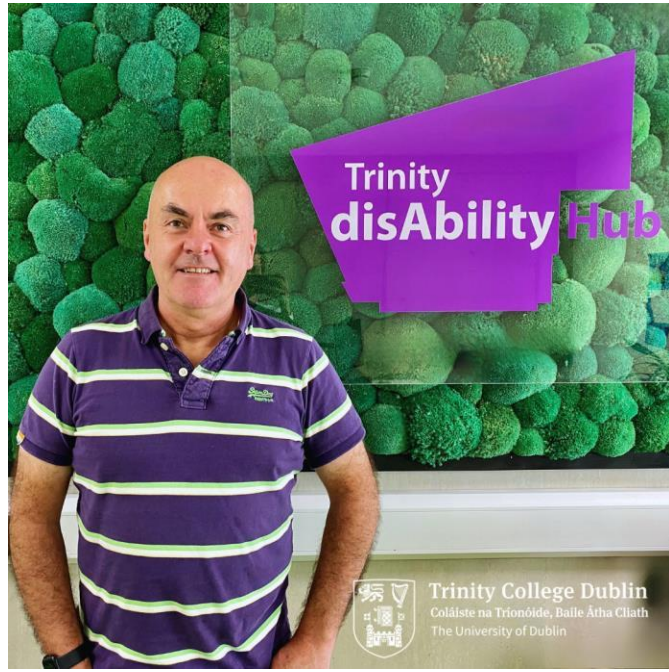
**Trinity College Dublin**  
Coláiste na Tríonóide, Baile Átha Cliath  
The University of Dublin

# What will I cover?

- What is the Disability Service?
- Students connected to the disability service.
- How your student can apply for reasonable accommodations
- Supports that the student can receive.
- Ways for parents to support your student.
- Tips for academic success.
- Other support systems in college.



# Staff Introductions



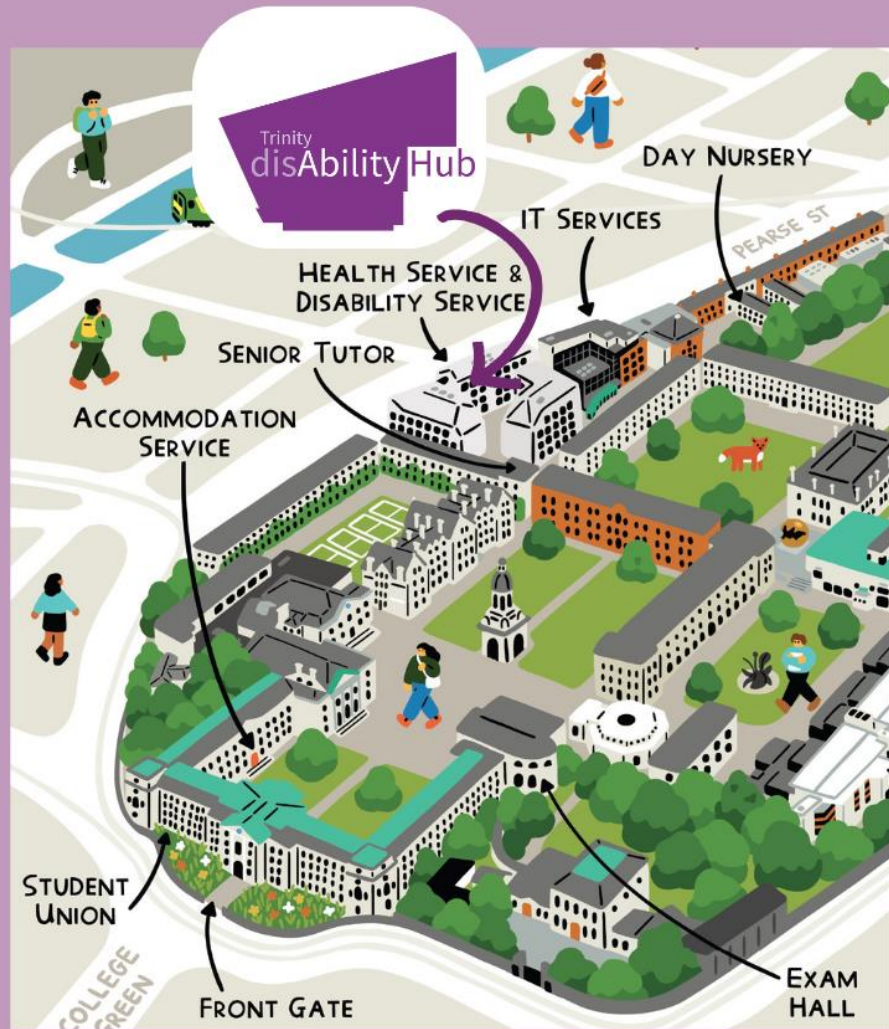
We are here

....

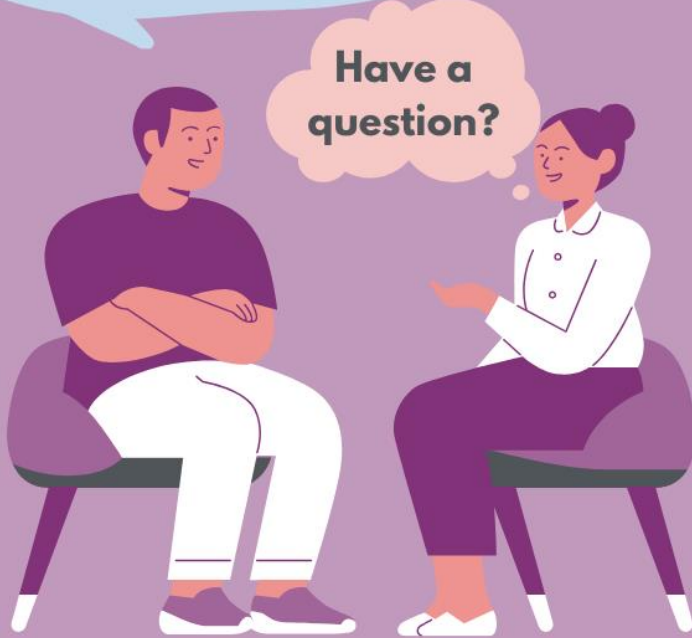
And help is never far away!



# DISABILITY SERVICE DROP-IN



Visit us at  
Printing House Square



SCAN TO BOOK AN  
APPOINTMENT

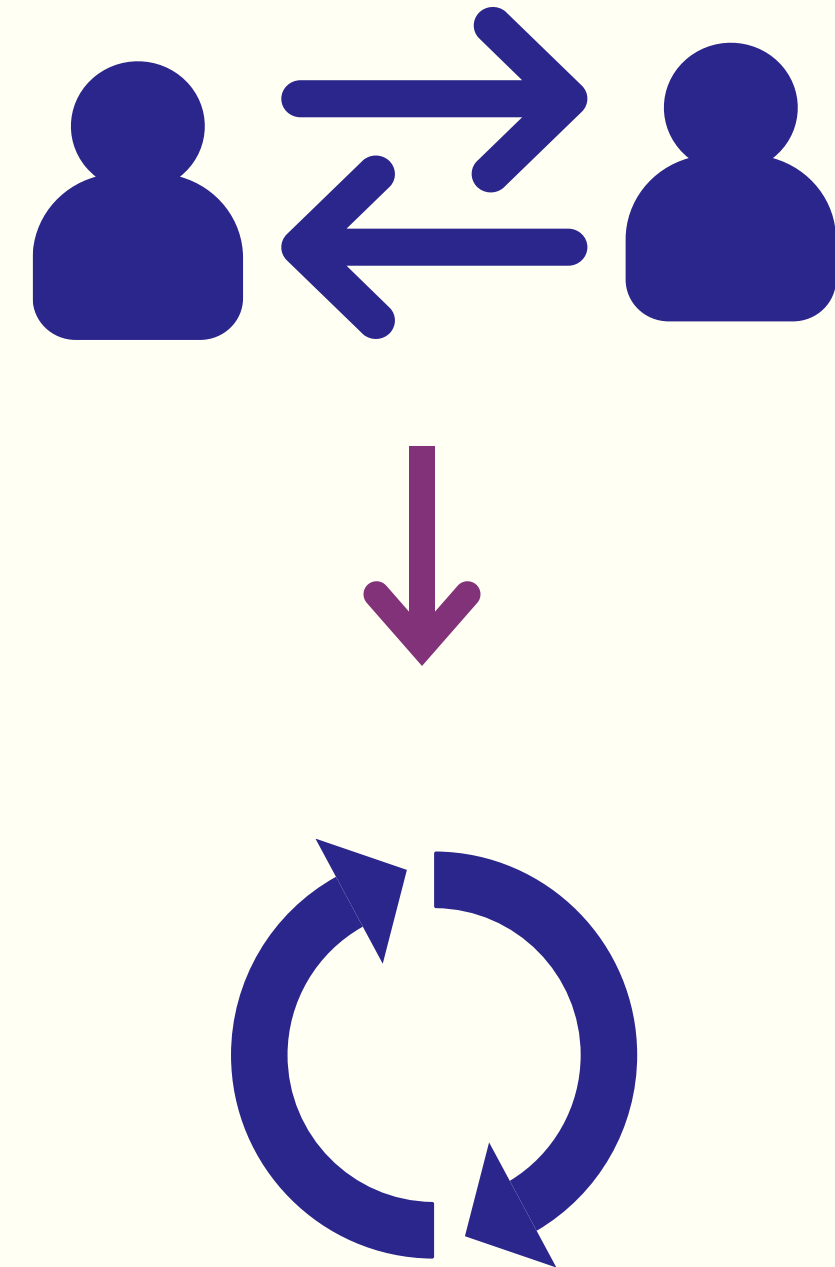
OPEN  
MONDAY TO FRIDAY  
12PM TO 2PM  
(TERM TIME)



Trinity College Dublin  
Coláiste na Tríonóide, Baile Átha Cliath  
The University of Dublin

# Trinity's Disabled Ethos

The ethos of the Trinity College Dublin Disability Service is to move from a transactional model of provision, where students are passive recipients of support to a transformational and sustainable model of disability support, where students take an active part in developing essential life skills and planning their educational journey.

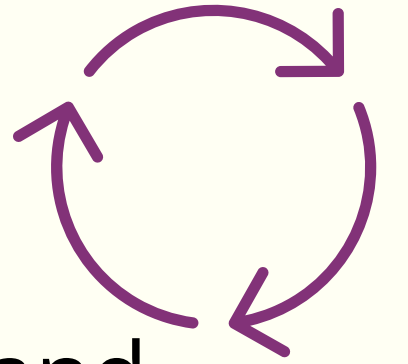


# Transactional



- Responsive.
- Supports are directed for you.
- Views the classroom as a hierarchy where the teacher (or lecturer) is in control and tells the student how to learn.
- Focus on student compliance.

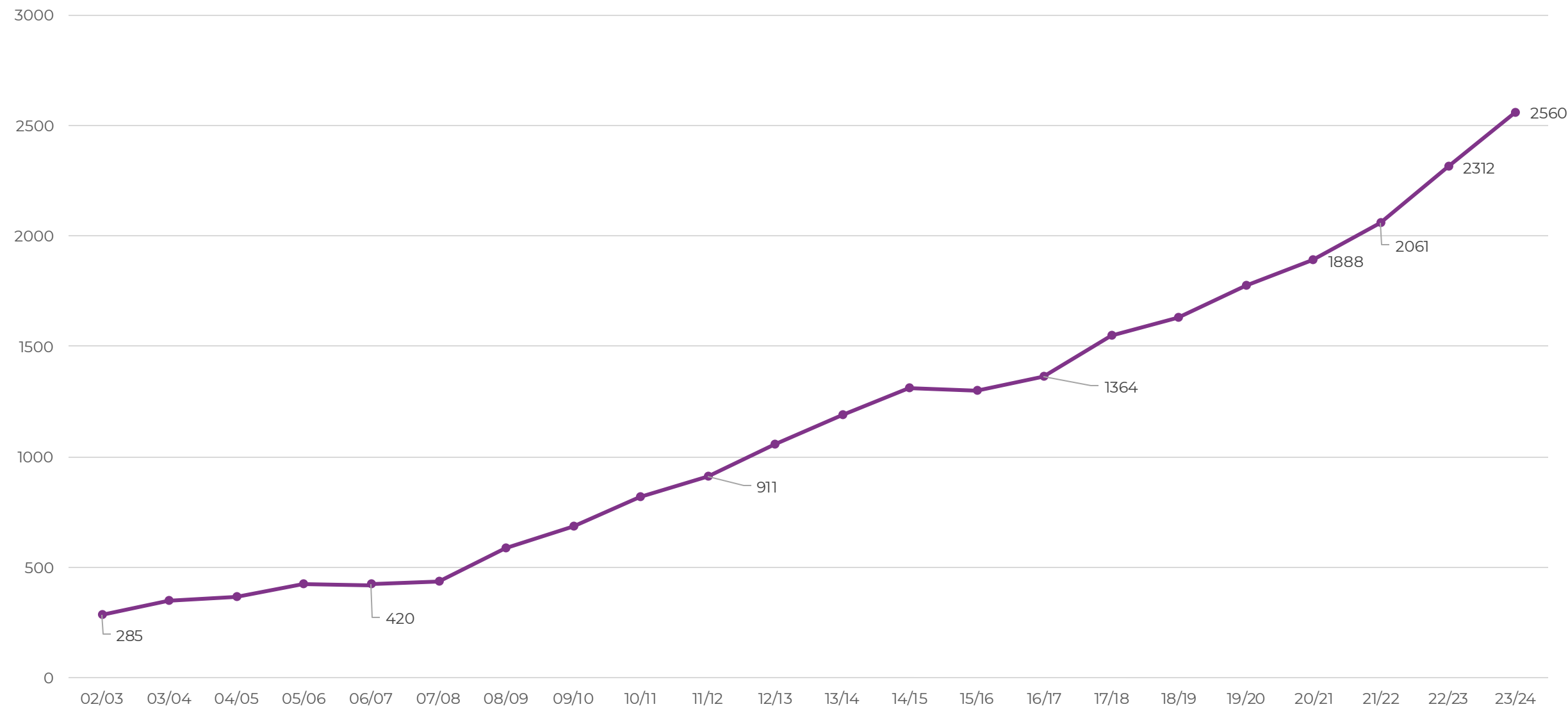
# Transformational



- Proactive.
- Allows students to direct and change their own supports.
- Focus on the individual learning styles and personalises the learning experience, allowing students to discover their own learning style.
- Focus on encouraging the student to see the value in their work and in themselves.



# Cumulative Record of completed student applications 2002/03 to 2023/24



**The number of students applying for Disability Service support has increased consistently over the service's lifespan, from 222 in 2002/03 to 2312 in 2023/24**







# Disabled Students – Trinity College Dublin

Description	No.
Total Number of Disabled Students that have applied for Disability Service support	2560
Total Number of Full Time Undergraduate Disabled Students that have applied for Disability Service support	2222
Total Number of Full Time Postgraduate Disabled Students that have applied for Disability Service support	244
Total Number of Foundation Level Disabled Students that have applied for Disability Service support	53
Total Number of Part Time Undergraduate Disabled Students that have applied for Disability Service support	3
Total Number of Part Time Postgraduate Disabled Students that have applied for Disability Service support	39
Total Number of Mature Disabled Students that have applied for Disability Service support	88
Total number of International Disabled Students that have applied for Disability Service support	316

10.8% of total student population

13.6% of Undergrad students

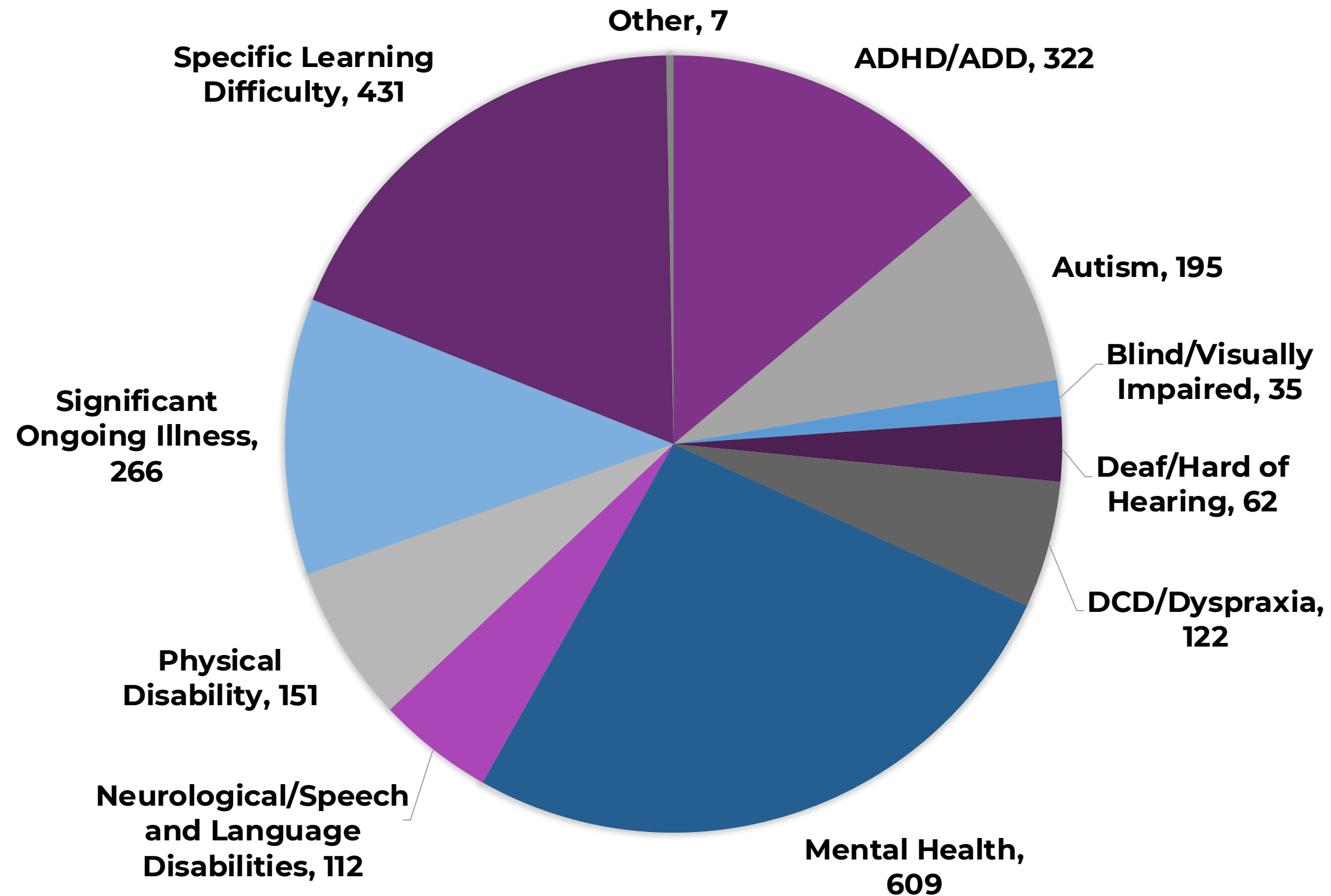
4.1% of Postgrad students

2.3% of Mature Students

3.8% of International Students

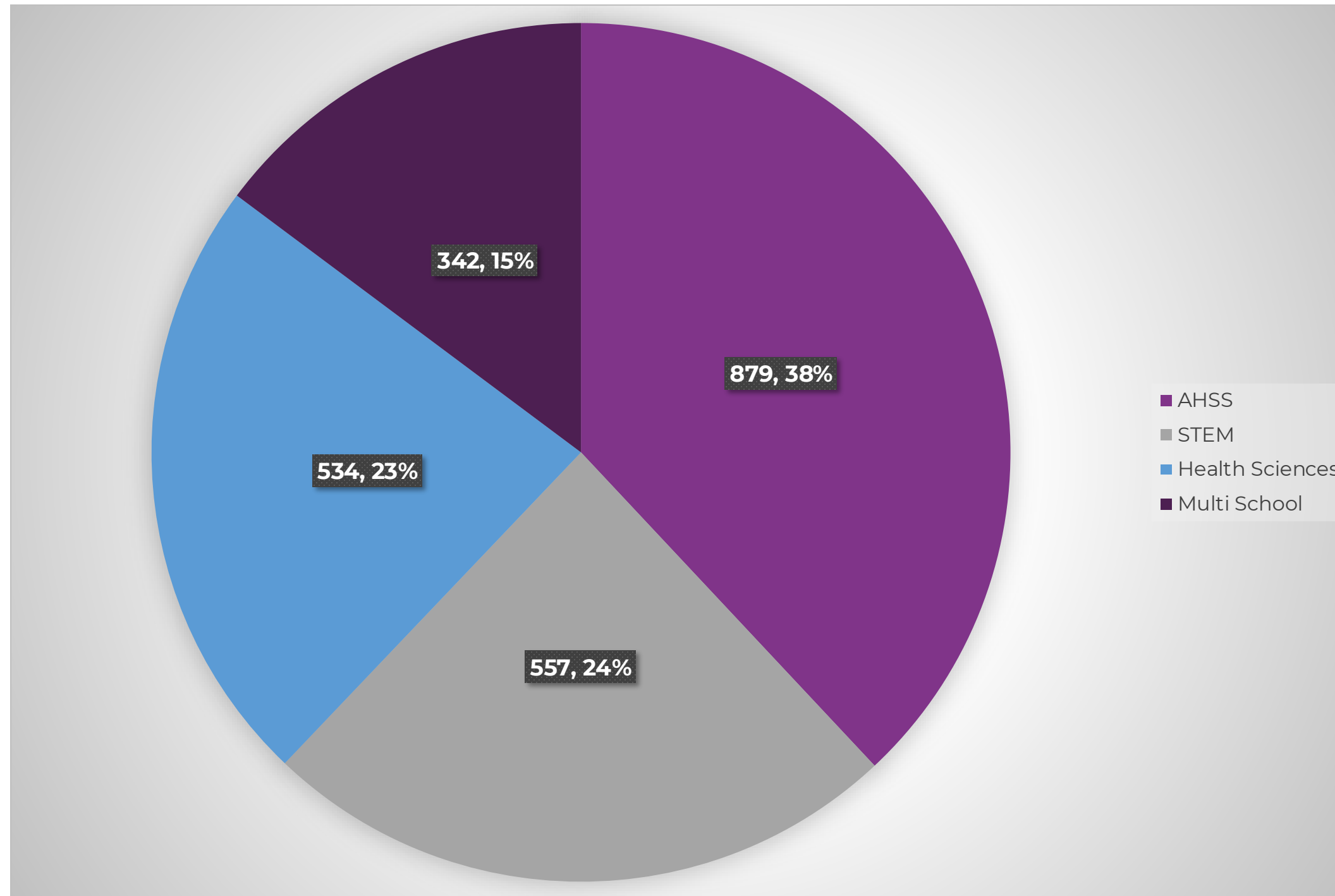


# Students Applying for Reasonable Accommodations



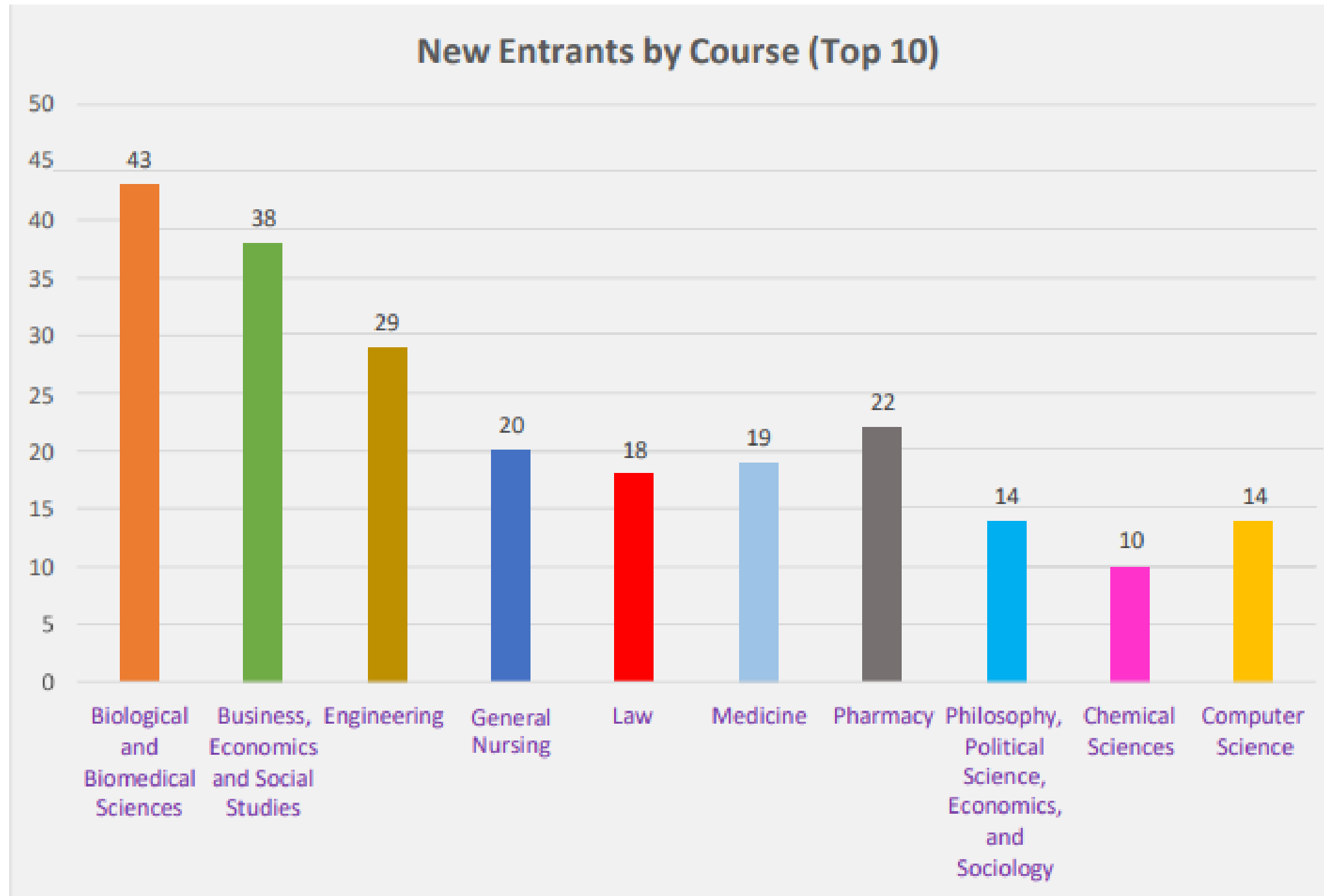


## Total Number of Disabled Student by Faculty






# Top 10 Trinity Courses chosen by Disabled New Entrant Undergraduate Students in 2023/24



# How do I apply for Reasonable Accommodations?

- Log into **my.tcd.ie** using your student number and password.
- Click on the **My Disability Service** tab.
- Click on **Reasonable Accommodations Application**.
- Select your **primary and secondary disability**.
- Choose **Yes** or **No** to receiving exam accommodations.
- Upload **evidence of disability**.

# How do I apply for Reasonable Accommodations?



The screenshot shows a web portal for students with disabilities. On the left is a sidebar with navigation links: "Current Student", "Consent to Disclose and Share Disability Information", "Reasonable Accommodations Application Process", "Needs Assessment Process", "Fund for Students with Disabilities - FSD/Trinity Funding", "DE Solutions Drop-in", "How do I access my IEP/504 report?", "Parent Information", "How Reasonable Accommodations work in Trinity", "Planning your Career", and "DLO School Contacts". The main content area has a heading "Students with Disabilities - How o..." and a video player titled "Hard Copy". The video player shows an illustration of a person sitting at a desk with a large play button in the center. Above the video player, there are three numbered questions: "1. Who will you be disclosing to?", "2. When will you disclose?", and "3. How are you going to disclose to them?". Below the questions, there is a paragraph of text: "After answering these questions you may feel more ready to make a choice. The reasoning behind disclosure varies from person to person. Providing medical information or seeking assistance in college are only some possible reasons for disclosing. Trinity College values recommendations disclosing at any level and any stage of your academic journey."

If a student is granted exam accommodations, such as additional time, the college will, in consultation with the student,

# What should I expect from my Needs Assessment?

- You will get to know your Disability Officer.
- Discuss supports that will help you succeed in college.
- Explore course demands.
- Agree on exam accommodations.
- Meetings last around 40 minutes and can take place online or in-person.
- Following the Needs Assessment, the student's Disability Officer will prepare an individual Learning Educational Needs Summary (LENS) Report. The LENS Report details the Reasonable Accommodations to be implemented.



**Scan to complete the  
Pre-Needs Assessment  
form!**

# **Deadline to apply for Exam Accommodations for Term 1**

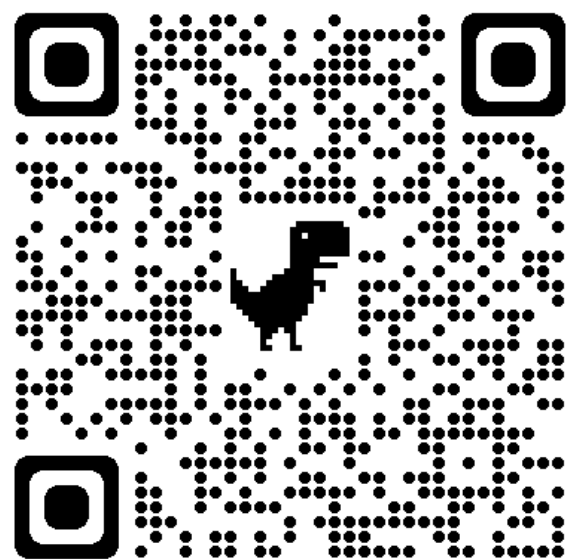


**October 25th**



# 1916 Bursary

The purpose of the 1916 Bursary is to encourage participation and success by students who are most socio-economically disadvantaged and who are from groups most underrepresented in higher education. First time entrant, SUSI special rate. The closing date for applications is Thursday, 10th October 2024 at 5pm.



Scan to read  
student  
stories!



## Supporting your third level journey

### Three financial awards

1. €5,000 per annum
2. €2,000 per annum
3. €1,500 once-off award

Find out if you qualify  
visit: [www.1916bursary.ie](http://www.1916bursary.ie)

The 1916 Bursary is co-funded  
by the Government of Ireland  
and the European Union.



# What Can the Disability Service Help Me With?



## Support in Trinity ... Your student is not alone



---

Disability Service: Occupational Therapy, Assistive Technology, Academic Support, Exam Accommodations.

---

Tutorial service: One-to-one support and guidance throughout the college journey.

---

Trinity Health Centre: full medical team.

---

Counselling Service: Confidential mental health support; Niteline confidential and anonymous listening service that is run by and for students.

---

Careers Service: career tools and exploration, scholarships, awards and internships, careers fairs.

---

Student Learning & Development: One to one appointment academic writing centre.

## For parents and guardians ... Supporting your student



---

Acknowledge that getting to grips with university, both academically and socially, takes time.

---

Reassure the student that they possess the intelligence, character, and strength to succeed in Trinity.

---

Encourage open and timely communication with people who can help: Tutor, accommodation warden, Student Union, Disability Officer.

---

Get to know **Trinity terms** for what is happening in the college: <https://www.tcd.ie/orientation/jargon/>

---

Read our Parent Handbook

<https://sway.office.com/TX3acmljyFNandkD?ref=Link&loc=play>

---

Explore Trinity websites: Student Life, Disability Service, Counselling, Tutorial Service, S2S, Student Union.

---

Trust in your student's journey while ensuring that they know where to seek help.

---

Check-in regularly, discuss next steps, support them to contact the right people.

# SafeZone

- SafeZone is a safety and security app for Trinity campus.
- It features an emergency support button.
- The Disability Service closed group allows the College to notify you of any urgent accessibility updates through push notification.
- The app is available on the Apple App Store or Google Play.
- Please discuss joining the Closed Group for Disabled Students with your Disability Officer
- The Disability Service have fall alerters that students can borrow. Please request one from your Disability Officer

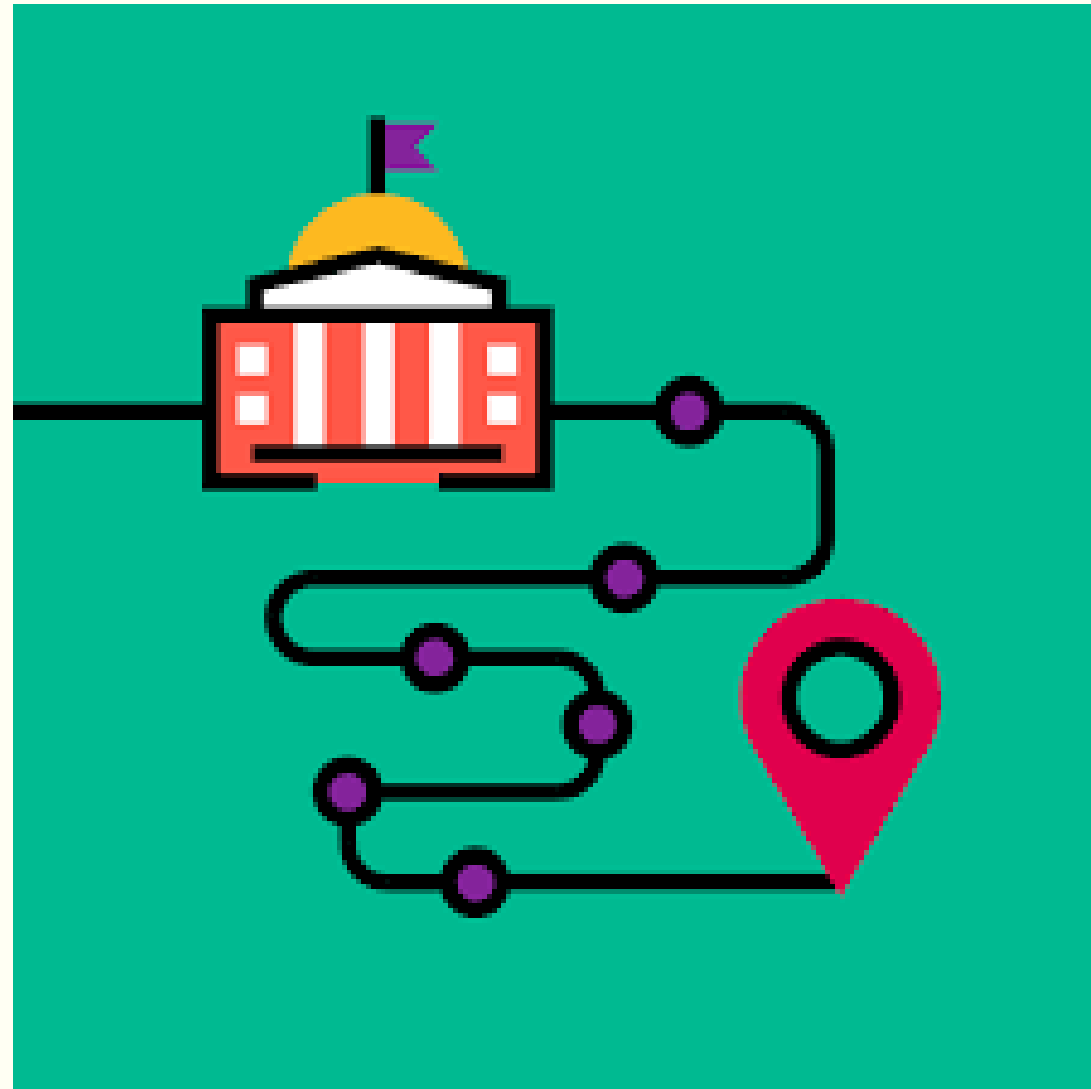


# ADHD Clinic



- Collaboration between the Disability Service and College Health Service – staffed by Occupational Therapists, GPs and the College Psychiatrist as well existing ADHD students in Trinity in a peer group.
- Week 6 of semester one and week 6 of semester two
- Students with a pre-existing assessment for ADHD and on medication can access for consultation and ongoing prescriptions. Any student can connect with Disability Service to discuss supports
- For more information contact [askds@tcd.ie](mailto:askds@tcd.ie) and for referral forms to clinic please see this link – [Trinity ADHD Clinic](#)

## The journey begins..... What type of student is your student?



---

Well-prepared: Knows their strengths and needs and are proactive.

---

Uncertain: Still discovering their unique needs and what support might be useful.

---

Crisis-driven: Look for help when things go wrong.

## The well prepared student ... Clear, Confident, and Connected



---

Good self-knowledge, has a long-established diagnosis.

---

Understands the accommodations that they need and what works.

---

Is aware that needs and supports may be different in college.

---

Proactive in seeking out resources and assistance.



## The uncertain explorer ... On a Journey of Self-Discovery



---

May not have a formal diagnosis or may have a recent diagnosis.

---

Just beginning their journey of self-discovery.

---

Does not yet have a clear understanding of needs.

---

Might not yet recognize the value of support services.

---

Would benefit greatly from mentorship and guidance.

## The crisis driven student ... When the Need Arises



---

Might not recognize or admit their needs until a crisis emerges.

---

Often reach out when feeling overwhelmed.

---

Would benefit from immediate support and ongoing check-ins from Day 1.

## Every journey is unique ...



---

Recognize and acknowledge every student's unique journey.

---

Continually strive to understand and cater to evolving needs.

---

Promote an inclusive environment where every student can thrive.

---

Come on in. The door is always open.



## How to contact The Disability Service

Visit us at the disAbility Hub in Printing House Square.

- Twitter: [@TCDAbility](https://twitter.com/TCDAbility)
- Instagram: [tcd.ability](https://www.instagram.com/tcd.ability)
- Disability Service Website: [www.tcd.ie/disability](http://www.tcd.ie/disability)
- Email: [askds@tcd.ie](mailto:askds@tcd.ie)

**Q&A**