



**Trinity College Dublin**

Coláiste na Tríonóide, Baile Átha Cliath

The University of Dublin

**Trinity Electives Annual Report to  
Undergraduate Studies Committee  
2023/24**

**November 2024**

## Table of Contents

<b>1. Introduction .....</b>	<b>3</b>
<b>2. Work of the Trinity Electives Sub-Committee .....</b>	<b>4</b>
<b>3. Capacities and Enrolment.....</b>	<b>4</b>
<b>4. Amendments to existing Trinity Electives .....</b>	<b>6</b>
<b>5. List of Trinity Electives Offered in 2023/24 .....</b>	<b>7</b>
<b>6. Breakdown of numbers taking Trinity Electives .....</b>	<b>8</b>
<b>7. Student survey .....</b>	<b>11</b>
<b>8. Assessment results .....</b>	<b>11</b>
<b>9. Support of Trinity Electives .....</b>	<b>12</b>
<b>10. Conclusion .....</b>	<b>12</b>
<b>Appendices .....</b>	<b>13</b>
<b>Appendix A: Trinity Elective Enrolment for 2023/24 categorised by faculty. ....</b>	<b>13</b>
<b>Appendix B: Report for Courts of Examiners 2023/24 .....</b>	<b>16</b>

## 1. Introduction

Trinity has always been committed to providing a distinctive education, which is inspired by current research and scholarship and delivered by academics with international reputations in their respective fields. Trinity Electives were developed under the Trinity Education Project and seek to build on this tradition and to link research and teaching in an innovative way. They are integral to the objectives of the Trinity Education.

Their purpose is to add breadth to the undergraduate curriculum by providing students with meaningful and distinctive learning experiences beyond their main discipline(s)/subject(s) and with opportunities to develop the Trinity Graduate Attributes. A number of the Trinity Electives are linked specifically to the Trinity research themes, while others address key societal challenges from a contemporary and/or historical perspective, or link with languages and cultures. All seek to connect student learning with our research activity and enable students to engage with the societal impact of research.

Trinity Electives are stand-alone modules, with no pre-requisites, which may be taken by undergraduate students from across the University in their 2nd and 3rd years.<sup>1</sup> They are weighted at 5 ECTS credits and are taught and assessed within one semester.

Trinity Electives enable multidisciplinary exploration and must adhere to the following principles. They must:

- examine current and/or past critical issues using techniques and approaches from multiple disciplines;
- expose students to new domains of knowledge, methods of enquiry and epistemologies, and the wider implications/consequences of the challenge/topic;
- foster reflection, inquisitiveness, skills of analysis and critical thinking;
- engage students in learning opportunities in diverse/heterogeneous groups;
- provide students with opportunities to develop the Trinity Graduate Attributes.

Trinity Electives are designed to take account of the following:

- The need to ensure meaningful engagement of students from multiple disciplines with the content at the appropriate intellectual level;
- The need for the Trinity Elective to be thematically coherent, i.e., not a series of 'show and tell' lectures or a sequence of multidisciplinary topics.

The delivery of Trinity Electives ensures that students:

- are exposed to a range of teaching, learning and assessment methods including innovative methods;
- take an active and self-regulated approach to their own learning.

All Trinity Electives incorporate blended delivery or are fully online.

---

<sup>1</sup> There are some exceptions to this, particularly in the Health Sciences, where students are unable to take Trinity Electives due to professional constraints.

## 2. Work of the Trinity Electives Sub-Committee

The Trinity Electives Sub-Committee (TESC) was established in 2020/21 as a sub-committee of the Undergraduate Studies Committee. The membership during 2023/24 was:

- Professor Fraser Mitchell (Chair)
- Professor Mark Sweetman, Associate Dean of Undergraduate Common Architecture
- Professor Stephen Maher, School of Medicine
- Professor Rachel Hoare, School of Languages, Literatures and Cultural Studies
- Professor Rachel McDonnell, School of Computer Science and Statistics
- Dr Pauline Rooney, Head of Academic Practice
- Mr Shane Coultry, Academic Registry
- Ms Catherine Arnold, SU Education Officer
- Ms Ciara Conlon, Academic Affairs
- Dr Michael Cleary-Gaffney, Academic Affairs (in attendance)

The role of Chair of the TESC rotates annually between the Associate Dean of Undergraduate Science Education (ADUSE) and the Associate Dean of Undergraduate Common Architecture (ADUCA).

The Trinity Elective Sub-Committee met on three occasions, once in Semester 1 and twice in Semester 2, with a further meeting of the academic members in May 2024 to review all Trinity Elective results achieved in both semesters.

## 3. Capacities and Enrolment

The range of Trinity Electives on offer to students has increased steadily since its establishment in 2019/20. In 2023/24, a total of 48 Trinity Electives were on offer to students, 30 in Semester 1 and 33 in Semester 2. There are a number of modules that are offered in both semesters, the majority of which are language modules which are available at both beginners and advanced levels.

Table 1: Trinity Electives running from 2019/20 – 2023/24

2019/20	2020/21	2021/22	2022/23	2023/24
26	39	39	44	48

Over the last number of years sufficient student capacity has been available in Trinity Electives, with approximately 25-30% of places remaining unfilled each year. Available student capacity across all Trinity Electives in 2023/24 totalled 4,703 student places; 2,416 in Semester 1 and 2,287 in Semester 2, which is comparable to 2022/23 (4,748). 74% (3,565) of all available student places were filled in 2023/24, with 72% (1,741) of places filled in Semester 1 and 80% (1,824) in Semester 2.

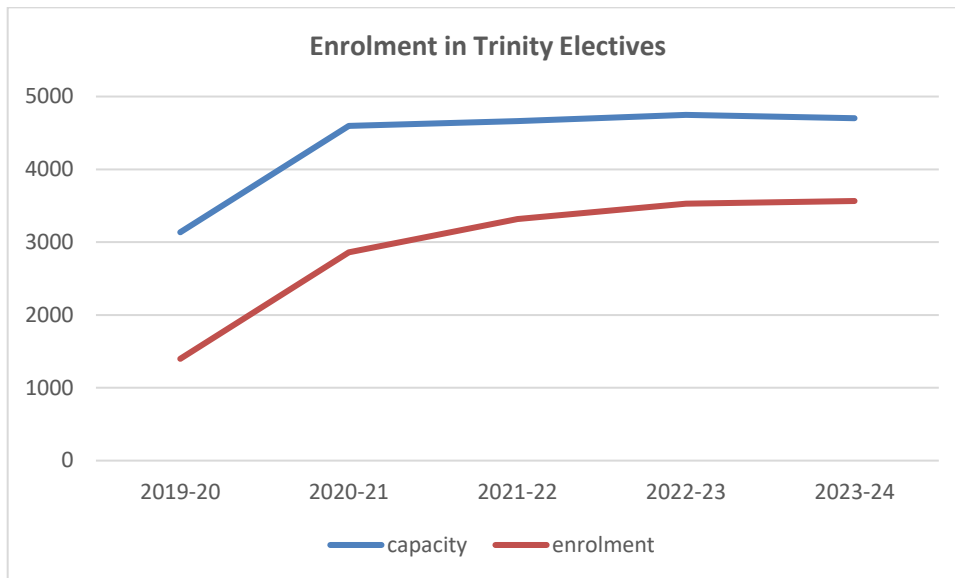


Figure 1: Capacity and Enrolment in Trinity Electives 2019/20 - 2023/24

A breakdown of student enrolment by faculty in 2023/24 is provided in Appendix A. The number of students from the Health Sciences enrolling on Trinity Electives is low (n=46) due to professional accreditation constraints on programmes. In 2023/24, the School of Pharmacy requested that Trinity Electives are made available to Pharmacy students from 2024/25, and it is hoped that more Health Science programmes follow suit.

Prior to 2023/24, the allocation of student places in Trinity Electives was through an algorithm-based system that ensured even distribution across faculties and years. In 2023/24, the decision was made to change to enrolment on a first come first served basis, which brings Trinity Electives in line with other enrolment processes. Student enrolment patterns will continue to be monitored by the TESC to ensure a multidisciplinary spread of enrolment in modules.

One of the duties of the TESC is to assess on an annual basis that there is sufficient capacity and range in the Trinity Electives suite to meet projected demand in the following academic year, however as data on student pathway choices is not made available to the committee, it is difficult to predict demand. In order to safeguard offerings to students and ensure stability in the delivery of Trinity Electives, the TESC approved a cessation and suspension process for Trinity Electives. From the academic year 2023/24, module co-ordinators who wish to suspend or cease a Trinity Elective must submit a request to the Trinity Electives Sub-committee via a designated form available on the Academic Affairs website. During 2023/24, the TESC approved the suspension of 'Cancer: The Patient Journey' and 'Engaging in the Digital World: Today and Tomorrow' for 2024/25.

Three proposals were submitted to TESC for consideration, which were recommended for approval by USC and Council to run in 2024/25. These were:

- i. Polish Language and Culture (Beginners)
- ii. Post-Beginners Japanese Language and Culture
- iii. Post-Beginners Chinese Language and Culture.

#### 4. Amendments to existing Trinity Electives

In 2023/24 Council approved an update to the Programme and Curriculum Design and Approval Policy. The updated policy categorises amendments to existing programmes as either minor, moderate, or major and outlines the corresponding approval required to facilitate the amendments. Amendments to Trinity Electives which are moderate or major require the approval of the TESC while minor changes require approval at School level only. Moderate changes comprised of:

- title changes;
- Learning outcome changes;
- mode of delivery e.g., from online to in-person;
- suspension/cessation of Trinity Electives;
- module capacity.

During 2023/24, the TESC considered and approved amendments to 3 currently approved Trinity Electives. These amendments related to changes in module capacity, learning outcomes and mode of delivery.

## 5. List of Trinity Electives Offered in 2023/24

A WORLD TO DISCOVER: TRAVEL MEMOIRS AND MEMORABILIA AT TRINITY	LANGUAGE AND COMMUNICATION IN THE DIGITAL AGE
AGES OF THE EMPIRE	LATIN ONE LANGUAGE MANY CULTURES
ANCIENT CULTURE LAB: HOMER'S EXPERIENCE AND THE GREEK LANGUAGE	LIFE AND DEATH IN DATA: PLAGUES, PESTILENCE, AND PANDEMICS
BECOMING HUMAN: THE SCIENCE OF US	MUSIC MAKING, THE ARTS AND SOCIETY
BLACK STUDIES	SPANISH LANGUAGE AND CULTURE (ADVANCED)
CANCER: THE PATIENT JOURNEY	SPANISH LANGUAGE AND CULTURE (BEGINNERS)
CHINESE LANGUAGE AND CULTURE (BEGINNERS)	SUSTAINABLE DEVELOPMENT GOALS AND POLICY EVALUATION: GLOBAL DEVELOPMENT ONE TARGET AT A TIME
CONTEMPORARY ART ANGLES	SYSTEMS - THE SCIENCE OF EVERYTHING
CREATIVITY AND TECHNOLOGY	THE CHEMISTRY OF PERIODIC ELEMENTS
CULTURES AND SOCIETIES OF THE MIDDLE EAST AND NORTH AFRICA (MENA)	THE ETHICSLAB: RESPONSIBLE ACTION IN THE REAL WORLD
DECODING GENETICS: THE BUILDING BLOCKS OF LIFE	THE POLITICS OF PEACE AND CONFLICT IN A GLOBALISED WORLD
DEFENCE FROM THE DARK ARTS	THE PSYCHOLOGY OF THE CLIMATE CRISIS
DESIGN THINKING	THINKING DIGITALLY AND CULTURALLY
DISPLACEMENT: EXPLORING THE HUMAN EXPERIENCE OF FORCED MIGRATION	TOOLKIT FOR A SMART & SUSTAINABLE WORLD
EMERGENCE OF TECHNOLOGIES	TRAVEL AND ENGLISH LITERATURE
ENERGY IN THE 21ST CENTURY	VACCINES - FRIEND OR FOE
ENGAGING IN THE DIGITAL WORLD: TODAY AND TOMORROW	WHAT IS THE INTERNET DOING TO ME? (SECURITY AND PRIVACY FOR PEOPLE IN A CONNECTED WORLD)
FRENCH LANGUAGE AND CULTURE (ADVANCED)	
FRENCH LANGUAGE AND CULTURE (BEGINNERS)	
FROM PLANETS TO THE COSMOS	
HACKING YOUR HEALTH: THE SCIENCE OF EXERCISE AND FITNESS	
HOW TO LIVE LONG AND PROSPER - A LIFESPAN APPROACH	
IDENTITIES AND ECOLOGIES OF LATIN AMERICA AND THE CARIBBEAN: PAST, PRESENT AND FUTURE	
INEQUALITY IN THE 21ST CENTURY	
IRISH LANDSCAPES: INTERDISCIPLINARY PERSPECTIVES	
IRISH LANGUAGE AND CULTURE (ADVANCED)	
IRISH LANGUAGE AND CULTURE (BEGINNERS)	
IRISH SIGN LANGUAGE	
ITALIAN LANGUAGE AND CULTURE (BEGINNERS)	
JAPANESE LANGUAGE AND CULTURE (BEGINNERS)	
KOREAN LANGUAGE AND CULTURE (BEGINNERS)	

## 6. Breakdown of numbers taking Trinity Electives

48 modules were on offer in total for students in 2023/24. In 2023/24 enrolment was on a first-come-first served basis. 92% of respondents to the TE survey reported that they enrolled on their top two preferred electives. Visiting students (year-long and Semester 1 students) select from the remaining places on a first-come-first-served basis before the start of the academic year. Those visiting for Semester 2 only selected from Trinity Electives with remaining capacity, again on a first-come-first-served basis, in December 2023.

Information was provided to students via a Trinity Electives website. Each Trinity Elective hosts a pitch video, general information and more detailed information for those that wish to explore further - see [www.tcd.ie/trinity-electives](http://www.tcd.ie/trinity-electives).

The number of students enrolled on each module is set out in Tables 2 and 3 below.



## Uptake of Trinity Electives in 2023/24, Semester 1

Module Code	Module Name	Min Quota	Module Capacity	Enrolled Students	% Capacity	Remaining Spaces	Withdrawn Students
TEU00011	A World to Discover: Travel Memoirs and Memorabilia at Trinity	20	60	23	38	37	
TEU00031	DESIGN THINKING	42	100	94	94	6	2
TEU00041	Emergence of Technologies	5	100	59	59	41	1
TEU00051	Energy in the 21st Century	12	80	58	73	22	
TEU00101	Irish Landscapes: Interdisciplinary Perspectives	3	15	14	93	1	
TEU00121	Cancer: The patient journey	20	51	51	100	0	
TEU00131	Chinese Language and Culture (Beginners)	8	60	36	60	24	
TEU00141	Cultures and Societies of the Middle East and North Africa (MENA)	10	100	31	31	69	
TEU00151	Displacement: exploring the human experience of forced migration	20	80	51	64	29	
TEU00161	French Language and Culture (Advanced)	8	60	55	92	5	
TEU00171	French Language and Culture (Beginners)	8	60	59	98	1	
TEU00201	Irish Language and Culture (Advanced)	8	90	59	66	31	1
TEU00211	Irish Language and Culture (Beginners)	8	30	23	77	7	
TEU00221	Japanese Language and Culture (Beginners)	8	60	60	100	0	
TEU00231	Korean Language and Culture (Beginners)	8	60	44	73	16	
TEU00241	Spanish Language and Culture (Advanced)	8	60	59	98	1	
TEU00251	Spanish Language and Culture (Beginners)	8	90	84	93	6	
TEU00291	Travel and English Literature	20	100	71	71	29	
TEU00301	Vaccines - Friend or Foe	20	100	37	37	63	1
TEU00311	What is the Internet doing to me? (Security and privacy for people in a connected world)	20	100	71	71	29	
TEU00321	Italian Language and Culture (Beginners)	8	60	59	98	1	
TEU00341	Irish Sign Language	8	60	59	98	1	
TEU00351	The Chemistry of Periodic Elements	20	100	41	41	59	
TEU00361	Hacking your health: the science of exercise and fitness	30	90	90	100	0	
TEU00371	Becoming Human: The Science of Us	20	60	58	97	2	
TEU00431	Thinking Digitally and Culturally	25	100	46	46	54	
TEU00471	THE PSYCHOLOGY OF THE CLIMATE CRISIS	20	200	90	45	110	
TEU00481	Black Studies	25	80	57	71	23	
TEU00531	DEFENCE FROM THE DARK ARTS	20	60	58	97	2	
TEU00541	INEQUALITY IN THE 21ST CENTURY	50	150	144	96	6	
	<b>Total:</b>	<b>490</b>	<b>2416</b>	<b>1741</b>	<b>72%</b>	<b>675</b>	<b>5</b>

## Uptake of Trinity Electives in 2023/24, Semester 2

Module Code	Module Name	Min Quota	Module Capacity	Enrolled Students	% Capacity	Remaining Spaces	Withdrawn Students
TEU00062	Engaging in the Digital World: Today and Tomorrow	30	100	97	97	3	1
TEU00072	From Planets to the Cosmos	50	120	119	99	1	
TEU00122	Cancer: The patient journey	20	50	49	98	1	
TEU00132	Chinese Language and Culture (Beginners)	8	60	33	55	27	
TEU00142	Cultures and Societies of the Middle East and North Africa (MENA)	10	100	30	30	70	
TEU00162	French Language and Culture (Advanced)	8	90	59	66	31	
TEU00172	French Language and Culture (Beginners)	8	31	31	100	0	
TEU00202	Irish Language and Culture (Advanced)	8	31	31	100	0	
TEU00212	Irish Language and Culture (Beginners)	8	30	30	100	0	
TEU00222	Japanese Language and Culture (Beginners)	8	60	55	92	5	
TEU00232	Korean Language and Culture (Beginners)	8	30	26	87	4	
TEU00242	Spanish Language and Culture (Advanced)	8	30	28	93	2	
TEU00252	Spanish Language and Culture (Beginners)	8	120	96	80	24	
TEU00272	The EthicsLab: Responsible Action in the Real World	20	60	58	97	2	
TEU00282	Toolkit for a Smart & Sustainable World	30	70	61	87	9	
TEU00292	Travel and English Literature	20	100	62	62	38	1
TEU00322	Italian Language and Culture (Beginners)	8	60	58	97	2	
TEU00342	Irish Sign Language	8	60	59	98	1	
TEU00382	Ancient Culture Lab: Homer's Experience and the Greek Language	3	120	57	48	63	
TEU00392	Latin One Language Many Cultures	10	55	49	89	6	
TEU00402	How to live long and prosper - A lifespan approach	8	50	50	100	0	
TEU00412	The Politics of Peace and Conflict in a Globalised World	10	80	79	99	1	
TEU00422	Language and Communication in the Digital Age	0	80	77	96	3	
TEU00442	Decoding Genetics: The building blocks of life	20	130	125	96	5	1
TEU00452	Contemporary Art Angles	0	29	29	100	0	
TEU00462	Sustainable Development Goals and Policy Evaluation: Global Development One Target at a Time	25	150	45	30	105	
TEU00482	Black Studies	25	80	73	91	7	
TEU00492	MUSIC MAKING, THE ARTS AND SOCIETY	12	41	41	100	0	
TEU00502	Creativity and Technology	8	40	40	100	0	
TEU00512	LIFE AND DEATH IN DATA: PLAGUES, PESTILENCE, AND PANDEMICS	30	60	41	68	19	
TEU00522	SYSTEMS - THE SCIENCE OF EVERYTHING	40	60	43	72	17	
TEU00552	AGES OF THE EMPIRE	0	60	59	98	1	
TEU00562	IDENTITIES AND ECOLOGIES OF LATIN AMERICA AND THE CARIBBEAN: PAST, PRESENT AND FUTURE	20	50	34	68	16	
	<b>Total:</b>	<b>479</b>	<b>2287</b>	<b>1824</b>	<b>80%</b>	<b>463</b>	<b>3</b>

## 7. Student survey

A student survey was compiled for the purposes of receiving feedback from students on their experience of taking Trinity Electives and to ensure that the overall quality of the offering is maintained. It is managed by the Quality Office and disseminated to all students taking Trinity Electives in each Semester. Responses are voluntary and anonymous. Module Coordinators also carry out their own in-class surveys to get specific feedback on their Electives and the accuracy of promotional material on the TE website and satisfaction with the allocation of TE modules.

The response rate to the survey in Semester 1 was 13% (235 students) and in Semester 2 was 20% (374 students). The summary reports provided by the Quality Office report largely positive findings in terms of student experience of Trinity Electives; 81% of students surveyed in Semester 1 and 85% in Semester 2 agreed or somewhat agreed that the module was a valuable experience. Students responded positively in terms of the interdisciplinary aspect of TEs, with 74% in Semester 1 and 75% in Semester 2 agreeing with the statement *“I had the opportunity to bring insights from my own discipline to my work in this module”*. In addition, 74% of respondents in Semester 1 and 83% in Semester 2 agreed that they had the opportunity to learn from peers from different disciplines. The majority of students also agreed that teaching methods and learning technology utilized contributed to their learning. The majority of respondents reported that they were able to enrol in their first choice module, indicating that the shift to a first come first served enrolment process has not affected student’s ability to enrol in the modules of their choice.

Around a quarter of respondents in both semesters reported dissatisfaction in relation to feedback provided, disagreeing that they had sufficient opportunities for feedback. A small proportion of respondents indicated that information available online on TEs was not accurate and in response, module co-ordinators were asked to review the website and update where necessary ahead of the enrolment period for 2024/25.

## 8. Assessment results

The process for ratifying Trinity Electives marks at Courts of Examiners was initially approved by USC in April 2019 and updated in February 2020, as part of mainstreaming plans for Trinity Electives, as follows:

- (i) the scrutinising of marks by a marks review panel consisting of a minimum of 3 academics including the Module Coordinator before inputting to SITS,
- (ii) the review of marks by a Trinity Electives Review Committee, consisting of the Chair of the Trinity Electives Sub-Committee, along with its other academic members, and
- (iii) the provision of anonymised results data from the Trinity Electives Review committee will be made available to Courts of Examiners in each programme so that they have sight of overall student performance in Electives that students within their courses have taken.

A report was compiled in May 2024 for meetings of the Trinity Electives Review Committee and for circulation ahead of meetings of Courts of Examiners to give context to the Trinity

Elective marks. The report set out:

- Visual representation of (i) final marks, (ii) distribution of grades, (iii) minimum/maximum grades by Faculty, and (iv) overall grade distribution by Faculty;
- Semester 1 average grades, minimum and maximum and Grade Distribution by Faculty – all modules
- Semester 2 average grades, minimum and maximum and Grade Distribution by Faculty – module results received to date.

Module Coordinators were available for queries regarding their Trinity Electives and their details provided.

The data which feeds into the Court of Examiner reports excludes any marks of 0% corresponding to the module grades of PD, AR, AB and NA to prevent the skewing of data. Please see Appendix B.

## **9. Financial support of Trinity Electives**

In initial years, start-up funding was provided to new Trinity Electives, which stemmed from residual Trinity Education Project fund. However, since 2021/22, this financial support is no longer available, although funding remains for the creation of promotional videos. The removal of a start-up fund should be monitored to ensure there is no impact on the range of Trinity Electives offered to students.

## **10. Conclusion**

The fifth year of the delivery of the Trinity Electives has, again, been a major achievement and the commitment of the academic staff that submitted proposals is acknowledged with thanks. It would not have been possible without the dedication and enthusiasm with which Module Coordinators met the task of delivering their Trinity Electives. Also acknowledged here, with thanks, are the efforts of the Trinity Electives Sub-Committee, Academic Registry (in particular the Online Module Enrolment team) IT Services, Trinity Online Services, Academic Affairs, Quality Office, the Undergraduate Common Architecture Office and School Administrative Managers. There have been many benefits – to the students who have access to a suite of modules that are wide-ranging, challenging, and innovative in their approach; to the academic staff delivering them who have the opportunity to showcase their research, and to engage with academic staff and students from other disciplines bring with them different perspectives; and to the University as a whole.

## Appendices

### Appendix A: Trinity Elective Enrolment for 2023/24 by faculty.

Module Faculty	Module	AHSS	STEM	HS	JH	Total
AHSS	TEU00011 - A WORLD TO DISCOVER: TRAVEL MEMOIRS AND MEMORABILIA AT TRINITY	15	1		7	23
	TEU00131 - CHINESE LANGUAGE AND CULTURE (BEGINNERS)	7	22		4	33
	TEU00132 - CHINESE LANGUAGE AND CULTURE (BEGINNERS)	11	17		5	33
	TEU00141 - CULTURES AND SOCIETIES OF THE MIDDLE EAST AND NORTH AFRICA (MENA)	13	9		7	29
	TEU00142 - CULTURES AND SOCIETIES OF THE MIDDLE EAST AND NORTH AFRICA (MENA)	11	7		10	28
	TEU00151 - DISPLACEMENT: EXPLORING THE HUMAN EXPERIENCE OF FORCED MIGRATION	23	5		22	50
	TEU00161 - FRENCH LANGUAGE AND CULTURE (ADVANCED)	22	13	1	17	53
	TEU00162 - FRENCH LANGUAGE AND CULTURE (ADVANCED)	20	29		8	57
	TEU00171 - FRENCH LANGUAGE AND CULTURE (BEGINNERS)	16	30	1	9	56
	TEU00172 - FRENCH LANGUAGE AND CULTURE (BEGINNERS)	13	10		7	30
	TEU00201 - IRISH LANGUAGE AND CULTURE (ADVANCED)	23	20	2	13	58
	TEU00202 - IRISH LANGUAGE AND CULTURE (ADVANCED)	7	15	1	7	30
	TEU00211 - IRISH LANGUAGE AND CULTURE (BEGINNERS)	12	5		6	23
	TEU00212 - IRISH LANGUAGE AND CULTURE (BEGINNERS)	19	4		5	28
	TEU00221 - JAPANESE LANGUAGE AND CULTURE (BEGINNERS)	13	36	1	7	57
	TEU00222 - JAPANESE LANGUAGE AND CULTURE (BEGINNERS)	6	35		8	49
	TEU00231 - KOREAN LANGUAGE AND CULTURE (BEGINNERS)	14	19		9	42
	TEU00232 - KOREAN LANGUAGE AND CULTURE (BEGINNERS)	9	13		3	25
	TEU00241 - SPANISH LANGUAGE AND CULTURE (ADVANCED)	30	15	2	11	58
	TEU00242 - SPANISH LANGUAGE AND CULTURE (ADVANCED)	5	19		2	26
	TEU00251 - SPANISH LANGUAGE AND CULTURE (BEGINNERS)	33	37	2	11	83
	TEU00252 - SPANISH LANGUAGE AND CULTURE (BEGINNERS)	23	62		7	92
	TEU00272 - The EthicsLab: Responsible Action in the Real World	22	18	3	13	56
	TEU00291 - Travel and English Literature	42	12	2	15	71
	TEU00292 - Travel and English Literature	25	13		21	59
	TEU00321 - ITALIAN LANGUAGE AND CULTURE (BEGINNERS)	7	33	3	15	58
	TEU00322 - ITALIAN LANGUAGE AND CULTURE (BEGINNERS)	13	30		13	56
	TEU00341 - IRISH SIGN LANGUAGE	9	32	1	12	54

	TEU00342 - IRISH SIGN LANGUAGE	20	21	2	15	58
	TEU00382 - ANCIENT CULTURE LAB: HOMER'S EXPERIENCE AND THE GREEK LANGUAGE	20	19		14	53
	TEU00392 - LATIN ONE LANGUAGE MANY CULTURES	18	12		14	44
	TEU00412 - THE POLITICS OF PEACE AND CONFLICT IN A GLOBALISED WORLD	33	17		27	77
	TEU00422 - LANGUAGE AND COMMUNICATION IN THE DIGITAL AGE	29	21		26	76
	TEU00431 - THINKING DIGITALLY AND CULTURALLY	15	15		13	43
	TEU00452 - CONTEMPORARY ART ANGLES	11	14	1	3	29
	TEU00462 - SUSTAINABLE DEVELOPMENT GOALS AND POLICY EVALUATION: GLOBAL DEVELOPMENT ONE TARGET AT A TIME	28	9		6	43
	TEU00471 - THE PSYCHOLOGY OF THE CLIMATE CRISIS	41	27		22	90
	TEU00481 - Black Studies	24	17		15	56
	TEU00482 - Black Studies	27	27		15	69
	TEU00492 - Music Making, the Arts and Society	15	8		18	41
	TEU00541 - INEQUALITY IN THE 21ST CENTURY	71	27	2	39	139
	TEU00552 - AGES OF THE EMPIRE	33	11	1	13	58
	TEU00562 - Identities and Ecologies of Latin America and the Caribbean: Past, Present and Future	9	14		9	32
	<b>Total</b>	<b>857</b>	<b>820</b>	<b>25</b>	<b>523</b>	<b>2225</b>
<b>STEM</b>	TEU00041 - EMERGENCE OF TECHNOLOGIES	12	34		9	55
	TEU00051 - ENERGY IN THE 21ST CENTURY	18	28	1	6	53
	TEU00062 - ENGAGING IN THE DIGITAL WORLD: TODAY AND TOMORROW	27	53		10	90
	TEU00072 - FROM PLANETS TO THE COSMOS	17	82	3	12	114
	TEU00101 - IRISH LANDSCAPES: INTERDISCIPLINARY PERSPECTIVES	4	2	1	7	14
	TEU00282 - Toolkit for a Smart & Sustainable World	15	32	1	10	58
	TEU00301 - Vaccines - Friend or Foe	12	17		7	36
	TEU00311 - What is the Internet doing to me? (Security and privacy for people in a connected world)	28	33	1	6	68
	TEU00351 - THE CHEMISTRY OF PERIODIC ELEMENTS	12	23		5	40
	TEU00371 - BECOMING HUMAN: THE SCIENCE OF US	29	19	1	7	56
	TEU00442 - DECODING GENETICS: THE BUILDING BLOCKS OF LIFE	40	69		9	118
	TEU00502 - Creativity and Technology	12	17	1	7	37
	TEU00512 - Life and Death in Data: Plagues, Pestilence, and Pandemics	5	21	2	12	40
	TEU00522 - SYSTEMS - THE SCIENCE OF EVERYTHING	8	30		5	43
	TEU00531 - DEFENCE FROM THE DARK ARTS	22	28		6	56
	<b>Total</b>	<b>261</b>	<b>488</b>	<b>11</b>	<b>118</b>	<b>878</b>
<b>HS</b>	TEU00121 - CANCER: THE PATIENT JOURNEY	19	26		6	51

	TEU00122 - CANCER: THE PATIENT JOURNEY	21	14		11	46
	TEU00361 - HACKING YOUR HEALTH: THE SCIENCE OF EXERCISE AND FITNESS	26	52		11	89
	TEU00402 - HOW TO LIVE LONG AND PROSPER - A LIFESPAN APPROACH	12	30	6	2	50
	<b>Total</b>	<b>78</b>	<b>122</b>	<b>6</b>	<b>30</b>	<b>236</b>
<b>Other</b>	TEU00031 - DESIGN THINKING*	40	32		12	84
	<b>Total</b>	<b>40</b>	<b>32</b>		<b>12</b>	<b>84</b>
<b>Total</b>		<b>1236</b>	<b>1462</b>	<b>42</b>	<b>683</b>	<b>3423</b>

\*delivered by NCAD



**Trinity College Dublin**

Coláiste na Tríonóide, Baile Átha Cliath

The University of Dublin

## Appendix B: Report for Courts of Examiners 2023/24

**Trinity College Dublin**  
**The University of Dublin**

### Trinity Electives

The purpose of the enclosed report is to give context to the Trinity Elective marks. Trinity Electives are 5 ECTS credit modules that are outside of a student's discipline but form part of their programme. They are stand-alone modules that may be taken by students from across the university.

The report sets out:

- The list of all Trinity Electives and their module codes.
- Visual representation of (i) final marks, (ii) distribution of marks, (iii) minimum/maximum marks by faculty, and (iv) overall grade distribution by faculty (please note that marks corresponding to the grades of PD, AR, AB & NA are not feeding into diagrams for (i), (ii) & (iii)).
- Semesters 1 & 2 average, minimum and maximum marks (please note that while total student numbers are shown, marks corresponding to the grades of PD, AR, AB & NA are not feeding into the figures for the average and minimum marks, and the standard deviation).
- Semesters 1 & 2 grade distribution by faculty.

Queries related to results for Trinity Electives should be directed to the relevant Module Coordinator(s).

The Module Coordinators may be found by clicking into the relevant module page found here:

<https://www.tcd.ie/trinity-electives/electives/> - the pdf at the bottom of the each page contains the relevant name(s).



**Table 1: Semester 1 2023/24 Trinity Elective Results (Marks)**

Semester 1	Faculty of Arts, Humanities and Social Sciences					Faculty of Science, Technology, Engineering and Mathematics					Faculty of Health Sciences					Multi Faculty					Total				
	No.	Avg	SDev	Min	Max	No.	Avg	SDev	Min	Max	No.	Avg	SDev	Min	Max	No.	Avg	SDev	Min	Max	No.	Avg	SDev	Min	Max
A WORLD TO DISCOVER: TRAVEL MEMOIRS AND MEMORABILIA AT TRINITY	15	67.53	6.53	56	77	1	62.00	0.00	62	62						7	61.43	12.57	33	76	23	65.43	9.17	33	77
BECOMING HUMAN: THE SCIENCE OF US	29	63.93	6.18	55	75	19	62.26	6.27	48	76	3	54.67	4.11	50	60	7	57.43	11.20	37	74	58	62.12	7.43	37	76
Black Studies	24	64.67	3.05	60	71	18	58.61	15.32	0	66						15	65.40	4.16	53	69	57	62.95	9.56	0	71
CANCER: THE PATIENT JOURNEY	19	68.47	4.66	56	76	26	72.08	4.14	65	78						6	69.50	3.64	62	74	51	70.43	4.62	56	78
CHINESE LANGUAGE AND CULTURE (BEGINNERS)	7	71.29	11.63	43	79	25	74.79	4.48	64	82						4	75.00	2.55	72	78	36	74.11	6.60	43	82
CULTURES AND SOCIETIES OF THE MIDDLE EAST AND NORTH AFRICA (MENA)	13	68.00	4.49	60	75	10	68.00	2.72	64	74						8	70.00	4.58	63	75	31	68.52	4.13	60	75
DESIGN THINKING	44	66.73	3.76	56	73	37	66.91	3.98	55	73						12	68.75	1.96	65	73	93	67.08	3.72	55	73
DISPLACEMENT: EXPLORING THE HUMAN EXPERIENCE OF FORCED MIGRATION	23	69.35	4.45	59	78	5	69.00	2.45	66	73						23	68.09	5.41	57	77	51	68.75	4.81	57	78
EMERGENCE OF TECHNOLOGIES	13	66.38	16.89	14	78	38	71.84	10.92	24	81						9	66.89	16.02	26	79	60	69.92	13.50	14	81
ENERGY IN THE 21ST	19	68.66	15.65	26.4	89.2	30	70.75	18.42	19.2	100	1	94.60	0.00	94.6	94.6	7	69.40	20.77	27	100	57	70.31	18.02	19.2	100
FRENCH LANGUAGE AND CULTURE (ADVANCED)	22	65.45	6.71	49	79	14	65.15	6.62	50	79	1	69.00	0.00	69	69	18	60.89	6.04	47	73	55	63.93	6.78	47	79
FRENCH LANGUAGE AND CULTURE (BEGINNERS)	18	62.78	7.96	45	74	31	68.29	4.50	58	76	1	67.00	0.00	67	67	9	61.33	9.04	43	73	59	65.53	7.17	43	76
HACKING YOUR HEALTH: THE SCIENCE OF EXERCISE AND FITNESS	25	67.12	7.63	54	84	53	70.55	6.63	54	84						11	64.55	8.42	51	80	89	68.84	7.49	51	84

**Table 1: Semester 1 2023/24 Trinity Elective Results (Marks)**

Semester 1	Faculty of Arts, Humanities and Social Sciences					Faculty of Science, Technology, Engineering and Mathematics					Faculty of Health Sciences					Multi Faculty					Total				
	No.	Avg	SDev	Min	Max	No.	Avg	SDev	Min	Max	No.	Avg	SDev	Min	Max	No.	Avg	SDev	Min	Max	No.	Avg	SDev	Min	Max
IRISH LANDSCAPES: INTERDISCIPLINARY PERSPECTIVES	4	70.75	6.22	63	80	2	67.00	2.00	65	69	1	60.00	0.00	60	60	7	66.57	6.48	55	75	14	67.36	6.33	55	80
IRISH LANGUAGE AND CULTURE (ADVANCED)	22	65.37	6.23	54	76	21	64.95	7.27	49	77	2	74.00	0.00	74	74	14	63.08	6.41	53	72	59	64.84	6.80	49	77
IRISH LANGUAGE AND CULTURE (BEGINNERS)	12	70.58	8.94	48	82	5	67.75	6.61	57	75						6	67.17	11.16	50	79	23	69.14	9.38	48	82
IRISH SIGN LANGUAGE	9	65.22	6.89	55	79	36	62.03	10.89	31	78	1	54.00	0.00	54	54	13	66.62	6.71	55	78	59	63.39	9.75	31	79
JAPANESE LANGUAGE AND CULTURE (BEGINNERS)	14	68.79	3.61	63	76	37	71.11	2.53	64	76	1					8	71.00	5.57	61	80	60	70.54	3.50	61	80
KOREAN LANGUAGE AND CULTURE (BEGINNERS)	14	61.00	7.21	45	69	21	66.29	9.63	35	77						9	66.44	9.14	51	83	44	64.64	9.17	35	83
SPANISH LANGUAGE AND CULTURE (ADVANCED)	30	69.67	4.87	59	79	15	69.53	9.07	43	80	2	72.50	1.50	71	74	12	69.00	4.24	59	76	59	69.60	6.12	43	80
SPANISH LANGUAGE AND CULTURE (BEGINNERS)	34	73.52	8.35	57	91	37	75.73	6.54	57	90	2	71.00	13.00	58	84	11	74.82	5.08	68	83	84	74.64	7.43	57	91
THE CHEMISTRY OF PERIODIC ELEMENTS	12	75.92	4.13	69	83	24	73.08	7.71	51	82						5	61.60	14.35	37	78	41	72.51	9.11	37	83
THE PSYCHOLOGY OF THE CLIMATE CRISIS	41	68.33	5.97	55	80	27	65.37	4.87	56	78						22	64.19	5.73	52	75	90	66.43	5.87	52	80
THINKING DIGITALLY AND CULTURALLY	15	67.93	7.47	56	80	15	65.07	5.85	52	72						14	64.07	7.60	49	74	44	65.73	7.19	49	80
Travel and English Literature	41	61.93	7.97	36	72	12	65.42	5.01	56	74	2	49.50	13.50	36	63	15	64.50	5.01	56	73	70	62.70	7.74	36	74
Vaccines - Friend or Foe	12	59.58	12.21	37	82	19	58.79	11.34	22	76						7	61.86	9.78	48	74	38	59.61	11.41	22	82

What is the Internet doing to me? (Security and privacy for people in a connected world)	28	72.50	6.02	58	81	35	65.97	9.90	27	78	1	56.00	0.00	56	56	7	66.29	9.28	45	75	71	68.44	9.12	27	81
--	----	-------	------	----	----	----	-------	------	----	----	---	-------	------	----	----	---	-------	------	----	----	----	-------	------	----	----

**Table 2: Semester 2 2023/24 Trinity Elective Results (Marks)**

Semester 2	Faculty of Arts, Humanities and Social Sciences					Faculty of Science, Technology, Engineering, Mathematics					Faculty of Health Sciences					Multi Faculty					Total				
	No.	Avg	SDev	Min	Max	No.	Avg	SDev	Min	Max	No.	Avg	SDev	Min	Max	No.	Avg	SDev	Min	Max	No.	Avg	SDev	Min	Max
ANCIENT CULTURE LAB: HOMER'S EXPERIENCE AND THE GREEK LANGUAGE	20	61.92	13.24	20.37	74.78	20	57.69	15.58	25.37	74.12						10	58.62	13.83	21.28	72.72	50	59.56	14.46	20.37	74.78
Black Studies	27	65.04	6.81	36	73	27	66.52	3.32	60	72	2	70.00	1.00	69	71	16	66.81	2.10	63	70	72	66.13	4.85	36	73
CHINESE LANGUAGE AND CULTURE (BEGINNERS)	11	81.10	3.96	76	86	17	83.24	2.58	78	88						5	81.20	3.12	77	86	33	82.25	3.33	76	88
CONTEMPORARY ART ANGLES	11	68.30	5.98	58	75	14	65.21	6.55	48	72	1	65.00	0.00	65	65	3	65.00	3.00	62	68	29	66.33	6.20	48	75
Creativity and Technology	12	64.52	7.99	46.8	78.4	19	67.20	6.02	52.2	77.2	1	72.80	0.00	72.8	72.8	8	58.10	9.16	40.8	74.4	40	64.72	8.15	40.8	78.4
CULTURES AND SOCIETIES OF THE MIDDLE EAST AND NORTH AFRICA (MENA)	11	72.55	3.03	67	80	8	70.86	2.29	66	74						11	73.64	2.06	69	76	30	72.55	2.74	66	80
DECODING GENETICS: THE BUILDING BLOCKS OF LIFE	39	67.97	6.00	57	79	66	72.30	5.04	55	80						8	66.13	5.01	59	76	113	70.44	5.85	55	80
FRENCH LANGUAGE AND CULTURE (ADVANCED)	20	65.35	8.38	40	75	30	65.53	6.18	47	79						9	63.88	4.73	57	70	59	65.24	6.88	40	79
FRENCH LANGUAGE AND CULTURE (BEGINNERS)	13	68.38	4.32	61	75	10	68.10	3.48	61	71						7	60.67	5.65	50	67	30	66.69	5.35	50	75
FROM PLANETS TO THE COSMOS	17	76.65	4.76	67	88	87	77.80	8.18	15	89	3	75.33	1.89	74	78	12	71.58	13.49	30	82	119	76.95	8.61	15	89
IRISH LANGUAGE AND CULTURE (ADVANCED)	7	76.14	5.59	64	82	16	74.50	5.47	66	82	1	81.00	0.00	81	81	7	70.00	7.37	61	78	31	74.03	6.47	61	82
IRISH LANGUAGE AND CULTURE (BEGINNERS)	19	73.53	7.89	50	82	6	76.00	8.22	62	83						5	76.00	7.32	63	83	30	74.38	7.92	50	83
IRISH SIGN LANGUAGE	20	69.95	8.72	47	78	21	71.00	6.14	60	84	2	61.00	7.00	54	68	16	72.29	5.28	60	80	59	70.58	7.34	47	84

**Table 2: Semester 2 2023/24 Trinity Elective Results (Marks)**

Semester 2	Faculty of Arts, Humanities and Social Sciences					Faculty of Science, Technology, Engineering, Mathematics					Faculty of Health Sciences					Multi Faculty					Total				
	No.	Avg	SDev	Min	Max	No.	Avg	SDev	Min	Max	No.	Avg	SDev	Min	Max	No.	Avg	SDev	Min	Max	No.	Avg	SDev	Min	Max
ITALIAN LANGUAGE AND CULTURE (BEGINNERS)	13	70.85	3.53	63	76	32	72.16	3.14	65	79						13	70.77	4.74	61	75	58	71.54	3.71	61	79
JAPANESE LANGUAGE AND CULTURE (BEGINNERS)	6	69.33	6.45	57	77	40	68.68	6.95	40	77						8	66.13	8.27	53	80	54	68.37	7.18	40	80
KOREAN LANGUAGE AND CULTURE (BEGINNERS)	9	67.22	4.42	60	76	14	69.46	6.55	54	76						3	72.33	2.05	70	75	26	69.00	5.69	54	76
LANGUAGE AND COMMUNICATION IN THE DIGITAL AGE	30	67.03	6.43	53	77	21	65.38	5.60	51	74						26	64.96	5.30	48	73	77	65.89	5.92	48	77
LATIN ONE LANGUAGE MANY CULTURES	18	63.44	16.27	0	76	15	66.20	8.94	42	74						16	67.88	17.91	0	76	49	65.73	15.16	0	76
SPANISH LANGUAGE AND CULTURE (ADVANCED)	5	69.00	1.79	67	72	20	69.40	5.84	58	83						3	67.67	2.05	65	70	28	69.14	5.07	58	83
SPANISH LANGUAGE AND CULTURE (BEGINNERS)	23	78.05	5.24	66	85	64	77.21	5.44	61	87						9	76.50	5.50	63	83	96	77.34	5.42	61	87
SUSTAINABLE DEVELOPMENT GOALS AND POLICY EVALUATION: GLOBAL DEVELOPMENT ONE TARGET AT A TIME	30	61.73	7.47	41	74	9	52.11	19.47	0	67						6	63.67	2.21	60	67	45	60.07	11.39	0	74
SYSTEMS - THE SCIENCE OF EVERYTHING	8	57.43	22.67	0	77.6	29	65.48	9.47	36.6	81						4	74.45	7.00	64	82.6	41	64.78	13.73	0	82.6
The EthicsLab: Responsible Action in the Real World	23	71.05	5.22	55	79	18	73.28	4.25	63	79	3	69.67	3.30	66	74	14	72.64	3.33	68	78	58	72.07	4.56	55	79
THE POLITICS OF PEACE AND CONFLICT IN A GLOBALISED WORLD	34	69.09	4.46	61	77	18	67.44	3.79	61	74						27	67.44	4.35	58	76	79	68.14	4.35	58	77

Toolkit for a Smart & Sustainable World	16	71.19	6.56	60	85	33	73.24	10.95	31	86	1	60.00	0.00	60	60	10	71.80	7.07	62	83	60	72.23	9.44	31	86
Travel and English Literature	25	63.88	10.09	25	73	15	65.93	4.50	54	72						23	66.24	5.07	54	74	63	65.20	7.52	25	74
AGES OF THE EMPIRE	33	65.20	3.48	50.3	71	11	64.95	2.50	57.5	67.3	1	65.20	0.00	65.2	65.2	14	63.79	4.44	55.2	70	59	64.84	3.58	50.3	71
Defence from the Dark Arts	22	58.07	7.69	43.42	72.7	30	58.54	11.30	22.22	83.42						6	65.00	9.10	49.86	79.66	58	59.03	10.06	22.22	83.42
Identities and Ecologies of Latin America and the Caribbean: Past, Present and Future	10	65.80	2.36	63.2	70	15	66.13	2.15	62	70						9	66.44	2.32	63.2	70	34	66.13	2.27	62	70
Inequality in the 21st Century	72	65.87	8.93	0	75.4	28	67.04	5.14	55	76.4	2	68.50	2.30	66.2	70.8	41	65.34	4.24	53.2	73.6	143	65.98	7.14	0	76.4
ITALIAN LANGUAGE AND CULTURE (BEGINNERS)	7	66.71	4.53	61	74	34	66.88	4.19	59	76	3	67.67	2.05	65	70	15	68.13	4.47	62	76	59	67.22	4.26	59	76

**Table 3: Semester 1 2023/24 Trinity Elective Results (Grades)**

Module	Faculty of Arts, Humanities and Social Sciences										Faculty of Science, Technology, Engineering and Mathematics										Faculty of Health Sciences					Multi Faculty										Total
	1	2	21	22	3	AR	F1	F2	P	QF	1	2	21	22	3	AR	F1	F2	PD	QF	1	21	22	AR	F1	1	2	21	22	3	AR	F1	F2	PD		
A WORLD TO DISCOVER: TRAVEL MEMOIRS AND MEMORABILIA AT TRINITY	6		7	2									1														1		5				1			23
BECOMING HUMAN: THE SCIENCE OF US	8		12	9							2		11	5	1							1	2				1		2	3			1			58
Black Studies	2		22										14	2	1			1											14	1						57
CANCER: THE PATIENT JOURNEY	10	8						1			17	9															5	1								51
CHINESE LANGUAGE AND CULTURE (BEGINNERS)	6				1						22	2				1											4									36
CULTURES AND SOCIETIES OF THE MIDDLE EAST AND NORTH AFRICA (MENA)	5		8								3	7															5		3							31
DESIGN THINKING	12		26	1		3				2	8	25				3				1							3		9							93
DISPLACEMENT: EXPLORING THE HUMAN EXPERIENCE OF FORCED MIGRATION	12		10	1							2	3															10		11	2						51
EMERGENCE OF TECHNOLOGIES	9		2		1			1			33		3	1			1										7			1				1		60
ENERGY IN THE 21ST CENTURY	9		6	2	1			1			18	4	5	1		1	1				1						4		1	1				1		57
FRENCH LANGUAGE AND CULTURE (ADVANCED)	6		13	2	1						3	8	2			1						1					1		13	3	1					55
FRENCH LANGUAGE AND CULTURE (BEGINNERS)	2		13	1	2						10	19	2									1					1		6		2					59
HACKING YOUR HEALTH: THE SCIENCE OF EXERCISE AND FITNESS	9		11	5							32	18	3														3		4	4						89
IRISH LANDSCAPES: INTERDISCIPLINARY PERSPECTIVES	2		2									2										1					3		3	1						14
IRISH LANGUAGE AND CULTURE (ADVANCED)	4		12	3		3					6	9	3	1	2						1			1			3		6	3		2				59
IRISH LANGUAGE AND CULTURE (BEGINNERS)	7		4		1						2	1	1		1												4			2						23
IRISH SIGN LANGUAGE	2		5	2							10	15	7	3		1								1			4		7	2						59
JAPANESE LANGUAGE AND CULTURE (BEGINNERS)	5		9								31	6													1		5		3							60
KOREAN LANGUAGE AND CULTURE (BEGINNERS)			9	3	2						9	8	3			1											4		3	2						44
SPANISH LANGUAGE AND CULTURE (ADVANCED)	18		10	2							10	3	1	1							2						7		3	1		1				59
SPANISH LANGUAGE AND CULTURE (BEGINNERS)	24		6	1		3					31	5	1								1		1				9		2							84

**Table 3: Semester 1 2023/24 Trinity Elective Results (Grades)**

Module	Faculty of Arts, Humanities and Social Sciences										Faculty of Science, Technology, Engineering and Mathematics										Faculty of Health Sciences					Multi Faculty								Total			
	1	2	21	22	3	AR	F1	F2	P	QF	1	2	21	22	3	AR	F1	F2	PD	QF	1	21	22	AR	F1	1	2	21	22	3	AR	F1	F2		PD		
THE CHEMISTRY OF PERIODIC ELEMENTS	10		2								18		4	2													2		1	1				1			41
THE PSYCHOLOGY OF THE CLIMATE CRISIS	17		19	4		1					5		18	4													4		13	4				1			90
THINKING DIGITALLY AND CULTURALLY	7		5	3							4		8	3													5		3	5	1						44
Travel and English Literature	3		26	9	2		1				2		8	2									1				1	2		9	3					1	70
Vaccines - Friend or Foe	3		2	5	1		1				3		6	7	2			1									3		2		2						38
What is the Internet doing to me? (Security and privacy for people in a connected world)	20		7	1							17		9	8				1									4		2		1						71
<b>Total</b>	<b>218</b>	<b>8</b>	<b>248</b>	<b>56</b>	<b>12</b>	<b>10</b>	<b>2</b>	<b>2</b>	<b>1</b>	<b>2</b>	<b>298</b>	<b>9</b>	<b>214</b>	<b>64</b>	<b>11</b>	<b>8</b>	<b>3</b>	<b>5</b>		<b>1</b>	<b>5</b>	<b>5</b>	<b>5</b>	<b>2</b>	<b>1</b>	<b>104</b>	<b>1</b>	<b>125</b>	<b>39</b>	<b>7</b>	<b>4</b>	<b>3</b>	<b>2</b>	<b>1</b>	<b>1476</b>		

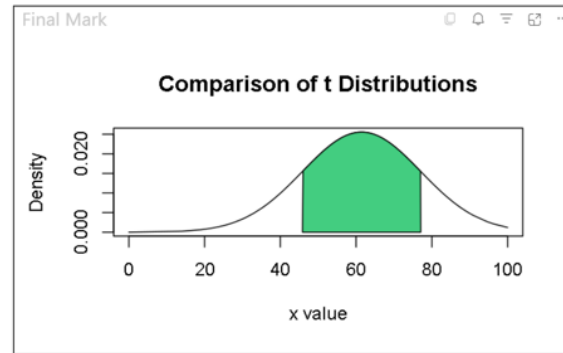
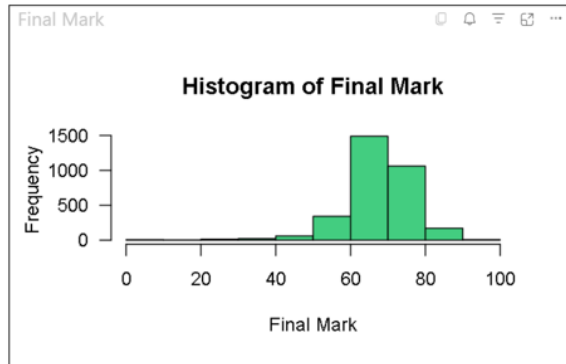


**Table 4: Semester 2 2023/24 Trinity Elective Results (Grades)**

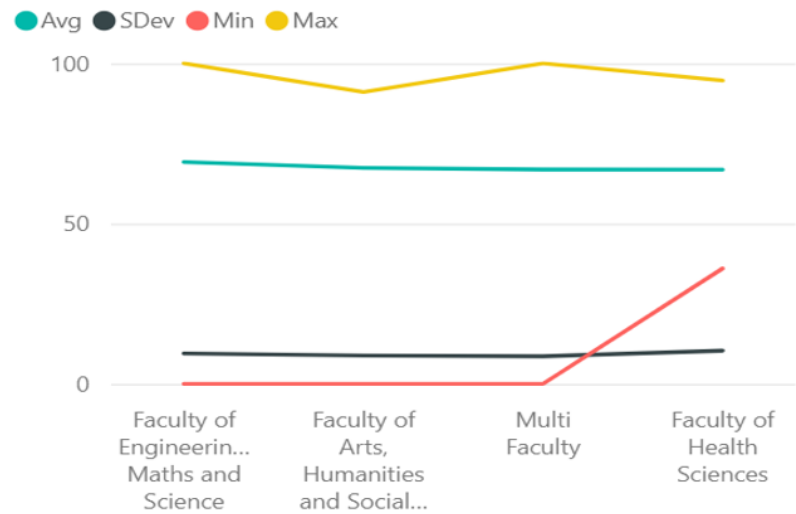
Module	Faculty of Arts, Humanities and Social Sciences										Faculty of Science, Technology, Engineering and Mathematics										Faculty of Health Sciences					Multi Faculty								Total	
	1	2	21	22	3	AR	F1	F2	P	QF	1	2	21	22	3	AR	F1	F2	PD	QF	1	21	22	AR	F1	1	2	21	22	3	AR	F1	F2		PD
ANCIENT CULTURE LAB: HOMER'S EXPERIENCE AND THE GREEK LANGUAGE	6		9	1	1	1	1	1			4		10	4	2		1	2								3		6	3	1				1	57
Black Studies	6		18	2			1				6		21								1	1				1		15							72
CHINESE LANGUAGE AND CULTURE (BEGINNERS)	10					1					17															5									33
CONTEMPORARY ART ANGLES	4		5	1		1					4		7	2	1								1					2				1			29
Creativity and Technology	3		6	2	1						6		11	2							1					1		3	3	1					40
CULTURES AND SOCIETIES OF THE MIDDLE EAST AND NORTH AFRICA (MENA)	10		1								6		1			1										10		1							30
DECODING GENETICS: THE BUILDING BLOCKS OF LIFE	13		19	2		5					48		14	2		2										2		5	1						113
FRENCH LANGUAGE AND CULTURE (ADVANCED)	8		9	1	2						9		17	3	1											2		5	1		1				59
FRENCH LANGUAGE AND CULTURE (BEGINNERS)	6		7								7		3															4	2		1				30
FROM PLANETS TO THE COSMOS	16		1								81		5				1				3					9		2				1			119
IRISH LANGUAGE AND CULTURE (ADVANCED)	6		1								10		4			2					1					4		3							31
IRISH LANGUAGE AND CULTURE (BEGINNERS)	13		3	1		2					3		1			2										4		1							30
IRISH SIGN LANGUAGE	15		2	2	1						12		7			1			1				1	1		12		2			2				59
ITALIAN LANGUAGE AND CULTURE (BEGINNERS)	10		3								26		5			1										9		4							58
JAPANESE LANGUAGE AND CULTURE (BEGINNERS)	4		1	1							25		11	1	1	2										4		2	2						54
KOREAN LANGUAGE AND CULTURE (BEGINNERS)	3		6								8		4	1		1										3									26
LANGUAGE AND COMMUNICATION IN THE DIGITAL AGE	10		15	4		1					5		13	3												6		16	1	1	2				77
LATIN ONE LANGUAGE MANY CULTURES	6		9	2			1				7		5	2	1											13		2						1	49
SPANISH LANGUAGE AND CULTURE (ADVANCED)	2		3								11		8	1												1		2							28
SPANISH LANGUAGE AND CULTURE (BEGINNERS)	21		1			1					61		2			1										7		1			1				96

**Table 4: Semester 2 2023/24 Trinity Elective Results (Grades)**

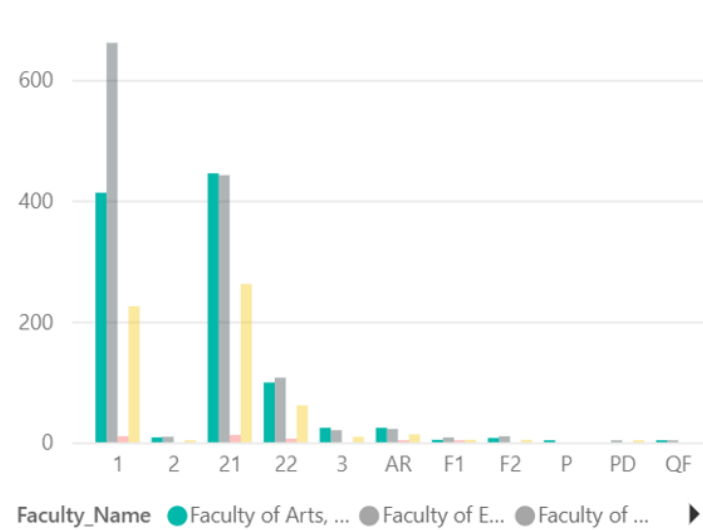
Module	Faculty of Arts, Humanities and Social Sciences										Faculty of Science, Technology, Engineering and Mathematics										Faculty of Health Sciences					Multi Faculty										Total	
	1	2	21	22	3	AR	F1	F2	P	QF	1	2	21	22	3	AR	F1	F2	PD	QF	1	21	22	AR	F1	1	2	21	22	3	AR	F1	F2	PD			
SUSTAINABLE DEVELOPMENT GOALS AND POLICY EVALUATION: GLOBAL DEVELOPMENT ONE TARGET AT A TIME	5		17	5	3								3	4	1				1										6								45
SYSTEMS - THE SCIENCE OF EVERYTHING	2		4	1				1			10		16	1			2										3		1							41	
The EthicsLab: Responsible Action in the Real World	13		8	1		1					15		3								1	2				11		3								58	
THE POLITICS OF PEACE AND CONFLICT IN A GLOBALISED WORLD	17		16			1					8		10													10		16	1							79	
Toolkit for a Smart & Sustainable World	10		6								23		7	2			1						1			6		4								60	
Travel and English Literature	7		13	2	1	1		1			3		10	1		1										6		12	3		2					63	
<b>Total</b>	<b>226</b>		<b>183</b>	<b>28</b>	<b>9</b>	<b>15</b>	<b>2</b>	<b>4</b>			<b>415</b>		<b>198</b>	<b>29</b>	<b>7</b>	<b>14</b>	<b>4</b>	<b>4</b>	<b>1</b>		<b>7</b>	<b>6</b>	<b>1</b>			<b>132</b>		<b>118</b>	<b>17</b>	<b>3</b>	<b>10</b>	<b>1</b>	<b>2</b>			<b>1436</b>	



Avg, SDev, Min and Max by Faculty\_Name



Overall Grades by Faculty



**Figure 1: Trinity Elective Results – Distribution of Marks**